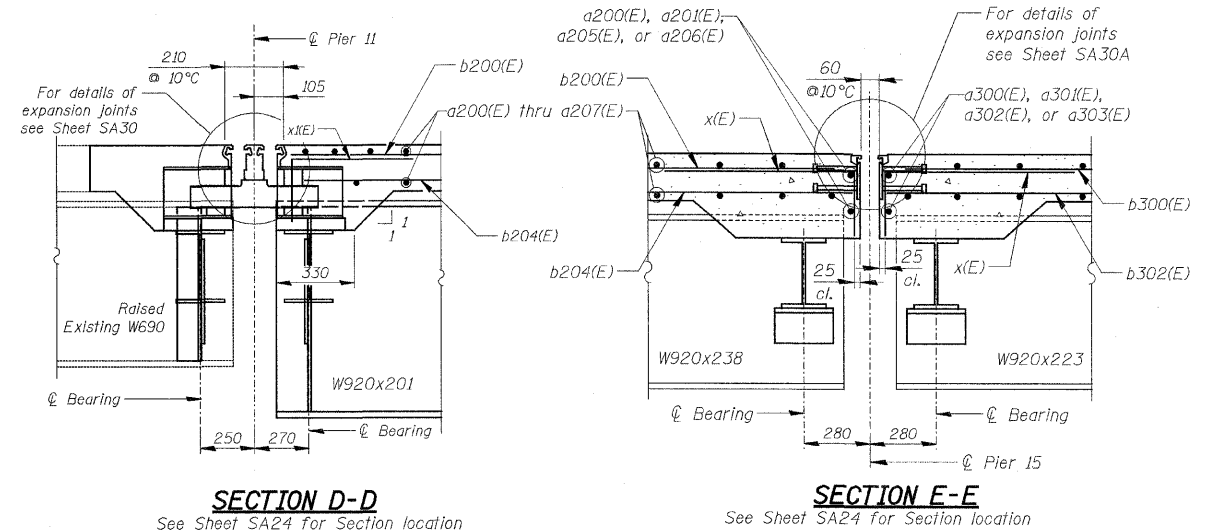
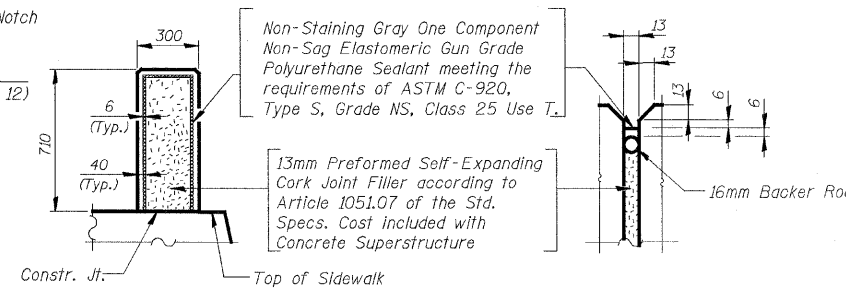
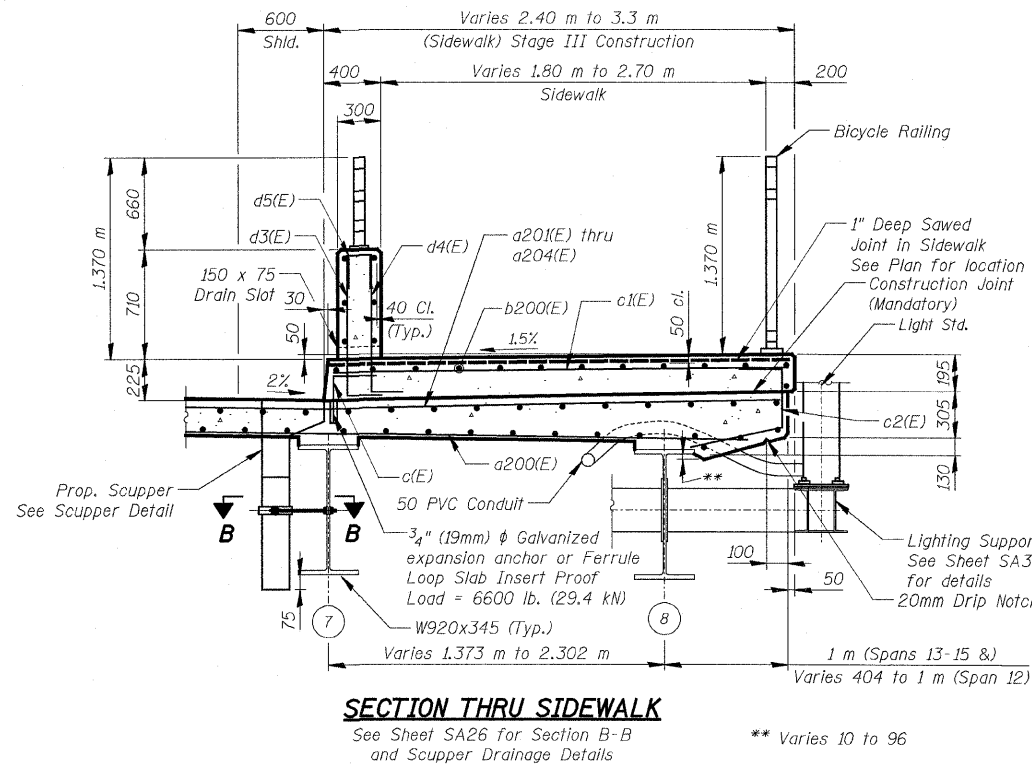
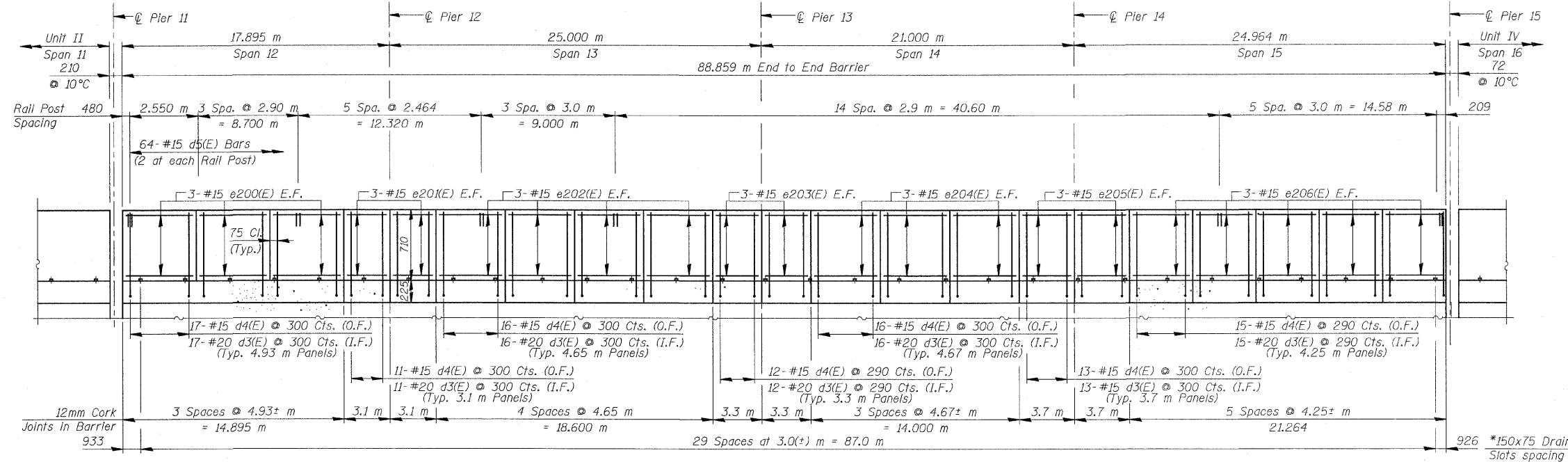


F.A.U. RTE.	SECTION	COUNTY	TOTAL SHEETS	SHEET NO.
3578	15 VB-1-F	COOK	62	24
STA.		TO STA.		
FED. ROAD DIST. NO.		ILLINOIS FED. AID PROJECT		
CONTRACT NO. 60H54				



**NOTES**

1. Reinforcement bars designated (E) shall be Epoxy Coated.
2. Bars indicated thus 20 x 3 - #15 etc. indicates 20 lines of bars with 3 lengths per line.
3. All dimensions are in millimeters (mm) except as noted.
4. Work this Sheet with SA24 & SA26.
5. In lieu of providing the d3(E) & d4(E) dowels bars as shown, the contractor, at his option and expense, can submit to the engineer for his review and approval an alternate detail to drill and grout the bars. No additional compensation will be allowed if the contractor elects to use the alternate detail.

REVISIONS		ILLINOIS DEPARTMENT OF TRANSPORTATION SUPERSTRUCTURE DETAILS - UNIT III-A
NAME	DATE	
		<b>SOUTHWEST HIGHWAY OVER B&amp;O RAILROAD AND STONY CREEK</b> FAU 3578 SECTION 15 VB-1-F STRUCTURE NUMBER 016-2771 COOK COUNTY STATION 4+716.497 SCALE: NONE DRAWN BY: M. Tryon DATE: 08/09/2009 CHECKED BY: A. Yargloogu

FOR INFORMATION ONLY

J:\vermillion\rdwy\_1\isle\5/29/2009 2:39:39 PM q:\tdor\9556\_a0\drawings\struc\Fabrication\plans\25\_FAB\_Deck\_Details\_UNIT III.dgn

