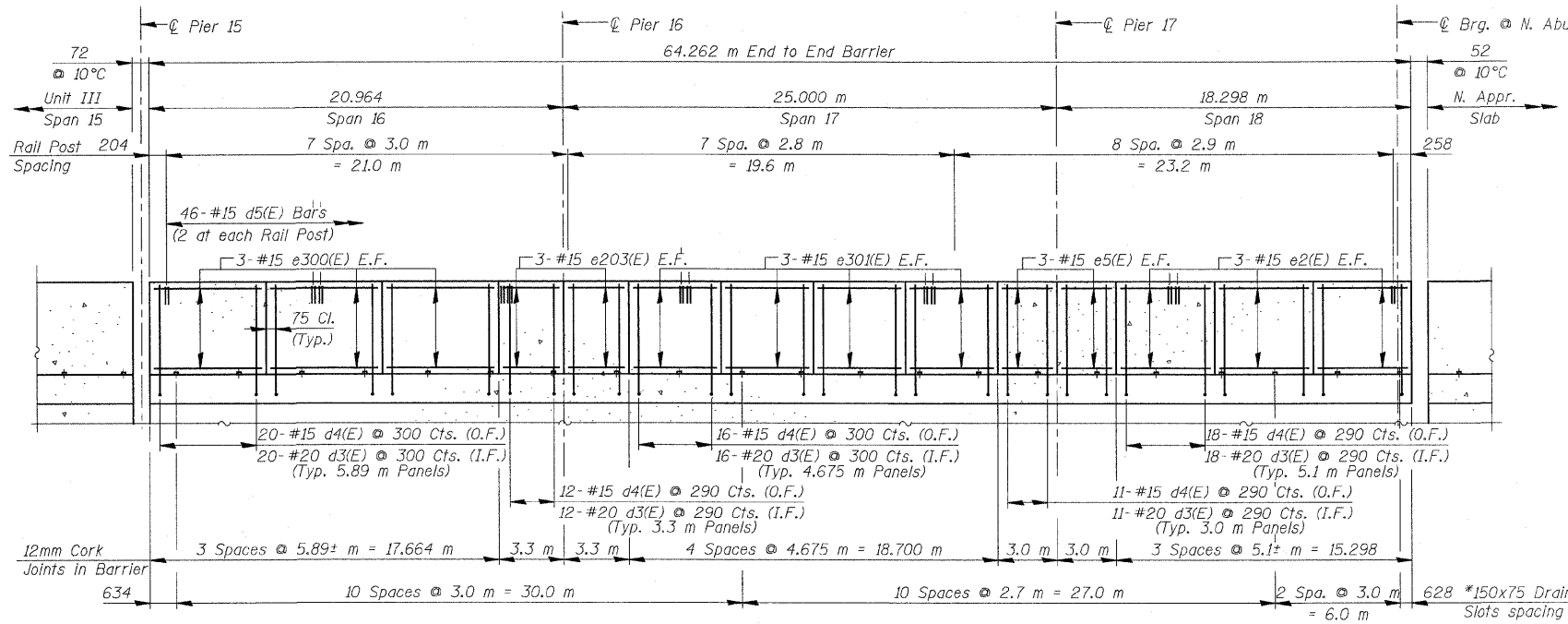
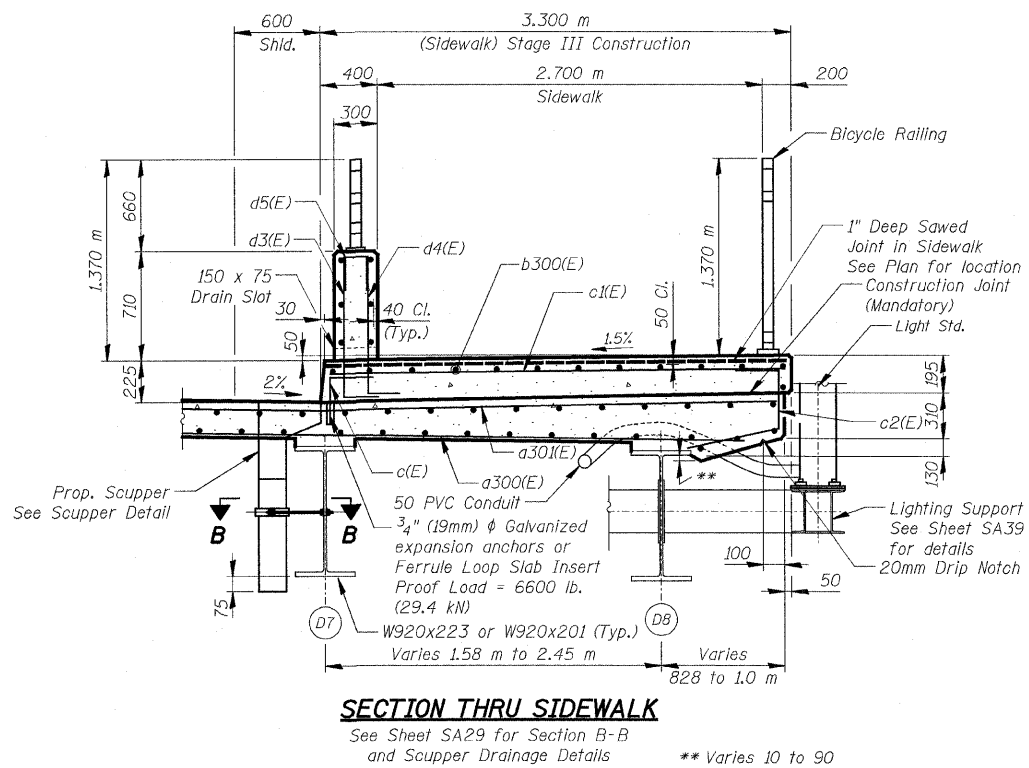


F.A.U. RTE.	SECTION	COUNTY	TOTAL SHEETS NO.	SHEET NO.
3578	15 VB-1-F	COOK	62	27
STA.		TO STA.		
FED. ROAD DIST. NO.		ILLINOIS FED. AID PROJECT		
CONTRACT NO. 60H54				



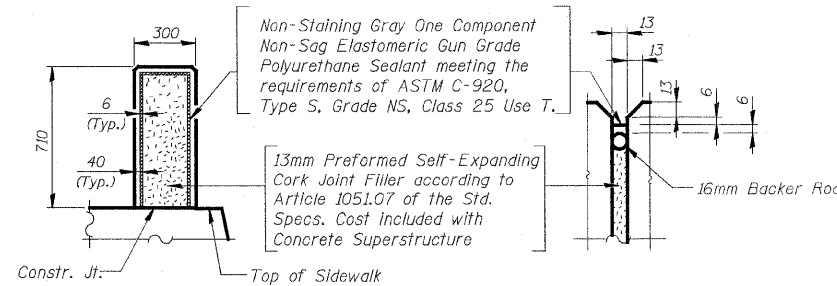
**ELEVATION OF SIDEWALK BARRIER**

Looking North-West  
 \* Drain Slots shall omit the vertical reinforcement and shall be 50mm min. from the edges of joints.

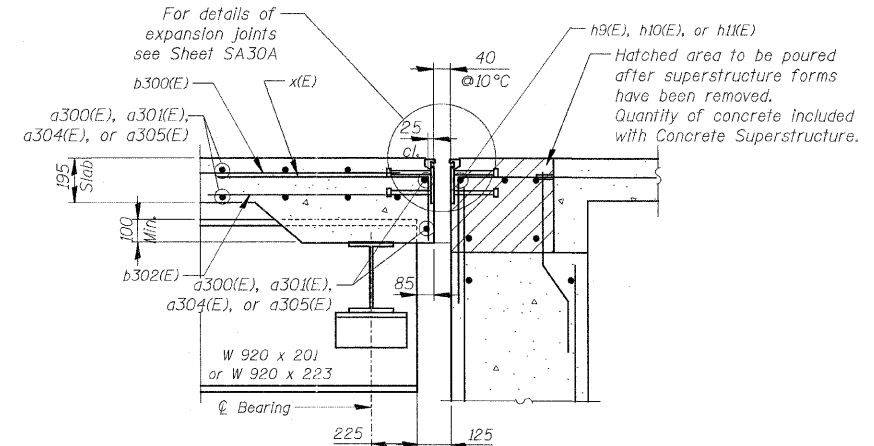


**SECTION THRU SIDEWALK**

See Sheet SA29 for Section B-B and Scupper Drainage Details



**BARRIER JOINT DETAILS**



**SECTION F-F**

See Sheet SA27 for Section location

**NOTES**

- Reinforcement bars designated (E) shall be Epoxy Coated.
- Bars indicated thus 20 x 3 -#15 etc. indicates 20 lines of bars with 3 lengths per line.
- All dimensions are in millimeters (mm) except as noted.
- See Sheet SA24 for Section E-E.
- In lieu of providing the d3(E) & d4(E) dowels bars as shown, the contractor, at his option and expense, can submit to the engineer for his review and approval an alternate detail to drill and grout the bars. No additional compensation will be allowed if the contractor elects to use the alternate detail.

REVISIONS		ILLINOIS DEPARTMENT OF TRANSPORTATION SUPERSTRUCTURE DETAILS - UNIT IV-A
NAME	DATE	
		<b>SOUTHWEST HIGHWAY OVER                      B&amp;O RAILROAD AND STONY CREEK</b> FAU 3578 SECTION 15 VB-1-F STRUCTURE NUMBER 016-2771 COOK COUNTY STATION 4+716.497 SCALE: NONE DRAWN BY: M. Tryon DATE: MAY 22, 2009 CHECKED BY: A. Yarglooglu

FOR INFORMATION ONLY

at:\icof\9556\_a0\drawings\struc\fabr\con\plans\28\_FAB\_Deck\_Details\_UNIT IV\_A.dgn  
 5/29/2009 10:07:50 PM  
 jvermillion(ridwy\_Lisle)

