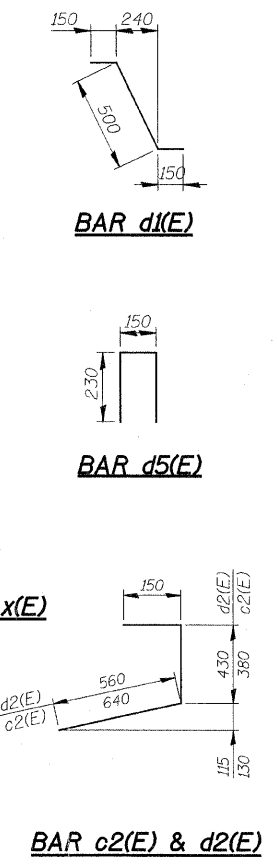
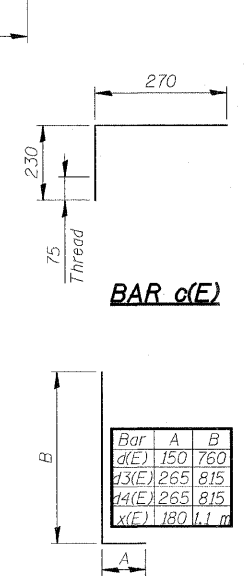
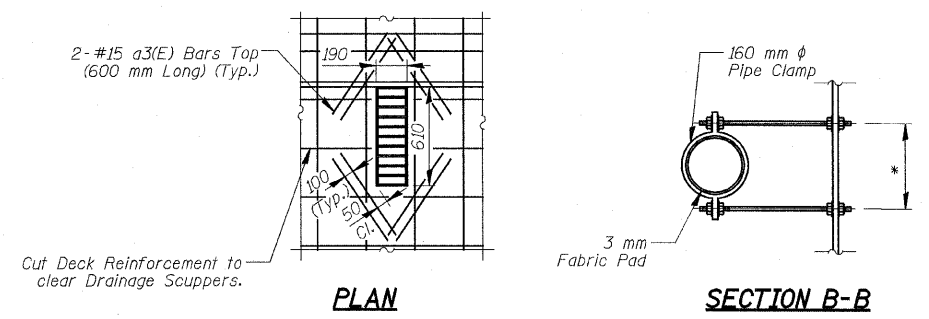
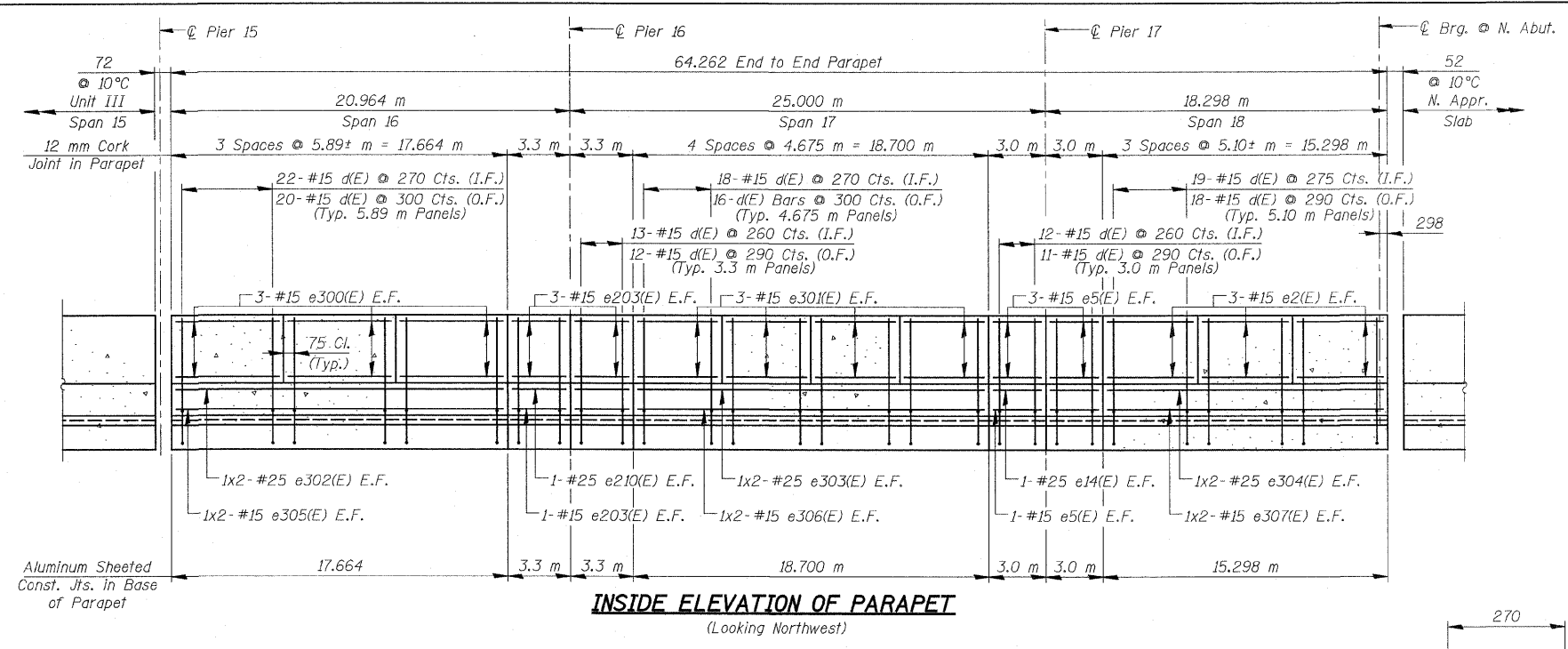
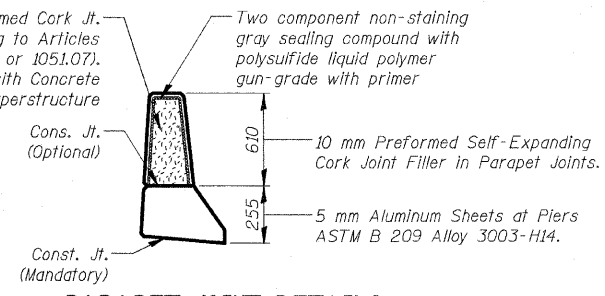
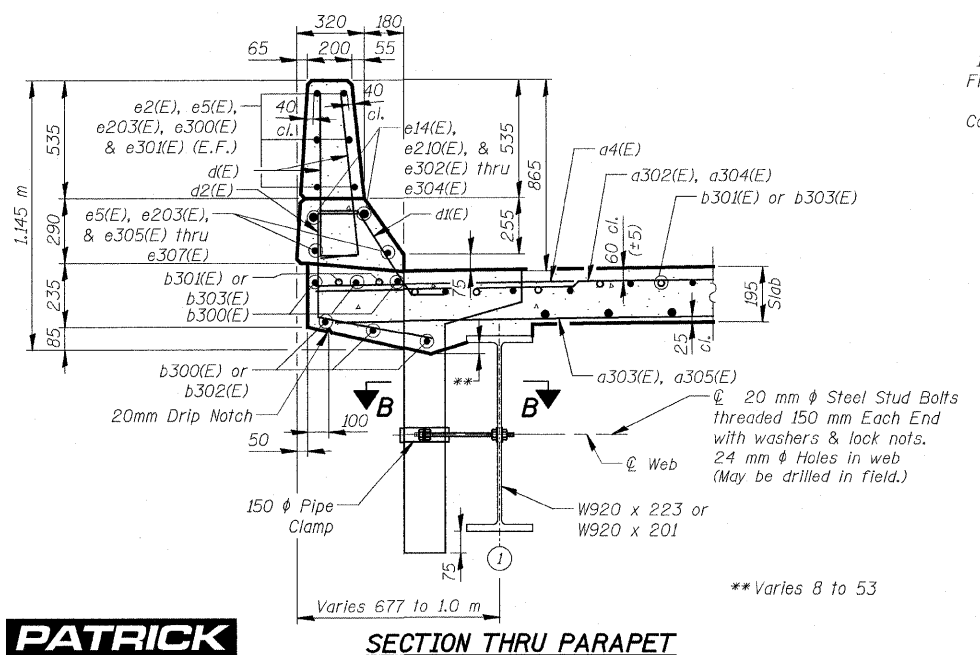


| | | | | |
|---------------------|-----------|----------|------------------|-----------|
| F.A.U. RTE. | SECTION | COUNTY | TOTAL SHEETS | SHEET NO. |
| 3578 | 15 VB-1-F | COOK | 62 | 28 |
| STA. | | TO STA. | | |
| FED. ROAD DIST. NO. | | ILLINOIS | FED. AID PROJECT | |
| CONTRACT NO. 60H54 | | | | |



SUPERSTRUCTURE - UNIT III
BILL OF MATERIAL

| BAR | NO. | SIZE | LENGTH (m) | SHAPE |
|----------------------------------|-------|------|------------|----------------------|
| a3(E) | 48 | #15 | 0.60 | — |
| a4(E) | 219 | #20 | 1.20 | — |
| a300(E) | 740 | #15 | 6.33 | — |
| a301(E) | 740 | #15 | 5.13 | — |
| a302(E) | 690 | #15 | 6.95 | — |
| a303(E) | 703 | #15 | 5.75 | — |
| a304(E) | 58 | #15 | 7.33 | — |
| a305(E) | 40 | #15 | 7.20 | — |
| b300(E) | 1,292 | #15 | 8.47 | — |
| b301(E) | 76 | #20 | 12.30 | — |
| b302(E) | 156 | #15 | 4.49 | — |
| b303(E) | 76 | #20 | 11.12 | — |
| c(E) | 215 | #15 | 0.50 | — |
| c1(E) | 215 | #15 | 3.20 | — |
| c2(E) | 215 | #15 | 1.17 | — |
| d(E) | 469 | #15 | 0.91 | — |
| d1(E) | 234 | #15 | 0.80 | — |
| d2(E) | 215 | #15 | 1.14 | — |
| d3(E) | 224 | #20 | 1.08 | — |
| d4(E) | 224 | #15 | 1.08 | — |
| d5(E) | 56 | #15 | 0.61 | — |
| e2(E) | 36 | #15 | 4.95 | — |
| e5(E) | 28 | #15 | 2.85 | — |
| e14(E) | 4 | #25 | 2.85 | — |
| e203(E) | 28 | #15 | 3.15 | — |
| e210(E) | 4 | #25 | 3.15 | — |
| e300(E) | 36 | #15 | 5.74 | — |
| e301(E) | 48 | #15 | 4.53 | — |
| e302(E) | 4 | #25 | 9.29 | — |
| e303(E) | 4 | #25 | 9.81 | — |
| e304(E) | 4 | #25 | 8.11 | — |
| e305(E) | 4 | #15 | 9.01 | — |
| e306(E) | 4 | #15 | 9.53 | — |
| e307(E) | 4 | #15 | 7.83 | — |
| x(E) | 157 | #15 | 1.28 | — |
| Concrete Superstructure | | | | m ³ 388.6 |
| Bridge Deck Grooving | | | | m ² 1,180 |
| Protective Coat | | | | m ² 1,608 |
| Reinforcement Bars, Epoxy Coated | | | | kg 57,640 |
| Bar Splicers | | | | Each 736 |



- NOTES**
- Reinforcement bars designated (E) shall be Epoxy Coated.
 - Bars indicated thus 20 x 3 - #15 etc. indicates 20 lines of bars with 3 lengths per line.
 - All dimensions are in millimeters (mm) except as noted.
 - The cost of expansion anchors/inserts is included in the cost of Reinforcement Bars, Epoxy Coated.

| REVISIONS | | ILLINOIS DEPARTMENT OF TRANSPORTATION SUPERSTRUCTURE DETAILS - UNIT IV-B |
|-----------|------|---|
| NAME | DATE | |
| | | <p style="text-align: center;">SOUTHWEST HIGHWAY OVER B&O RAILROAD AND STONY CREEK</p> <p>FAU 3578 SECTION 15 VB-1-F STRUCTURE NUMBER 016-2711 COOK COUNTY STATION 4+716.497</p> <p>SCALE: NONE DRAWN BY: M. Tryon DATE: 04/08/2009 CHECKED BY: A. Yargloogu</p> |
| | | |
| | | |
| | | |
| | | |

VerMillion(Rdwy_Lisle) 5/29/2009 2:39:45 PM
 G:\Vdr\9556.ad\drawings\struc\fabrication\plans\29.FAB_Deck_Details_UNIT_IV_B.dgn

