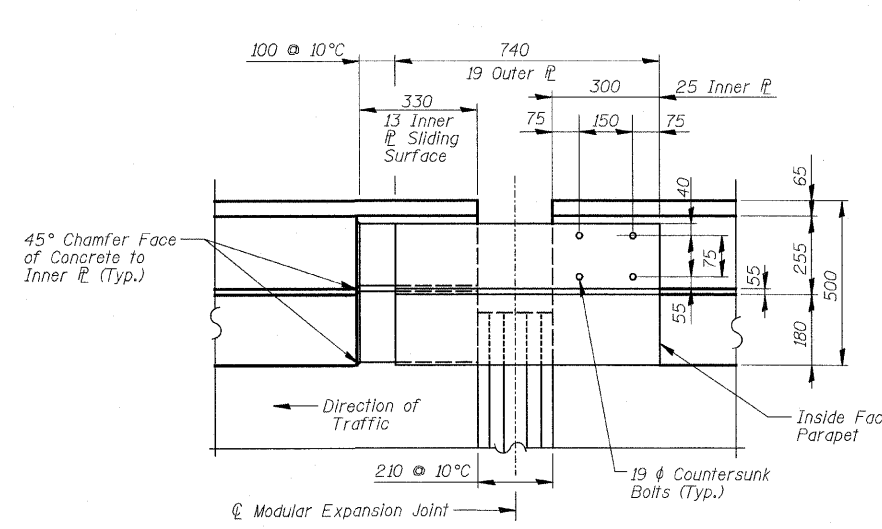
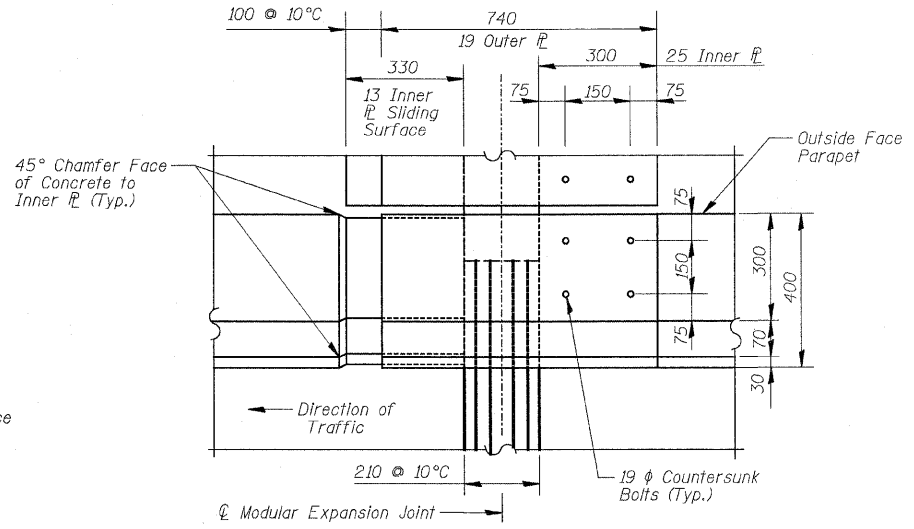


F.A.J. RTE.	SECTION	COUNTY	TOTAL SHEETS	SHEET NO.
3578	15 VB-1-F	COOK	62	30
STA.		TO STA.		
FED. ROAD DIST. NO.		ILLINOIS	FED. AID PROJECT	
CONTRACT NO. 60H54				



PARAPET SLIDING P ASSEMBLY
(Top View)



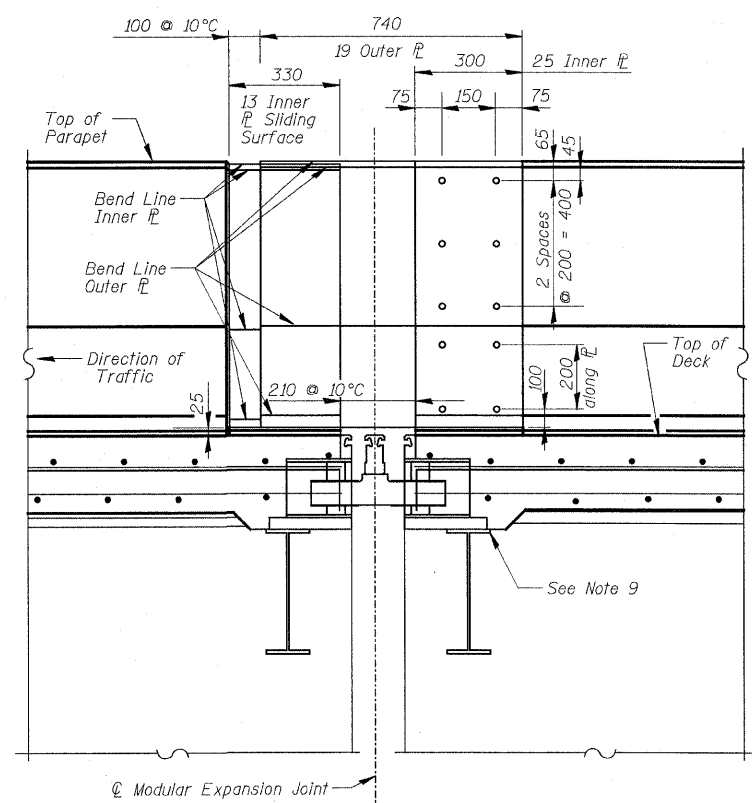
PARAPET SLIDING P ASSEMBLY AT SIDEWALK
(Top View)

- Notes:
1. New Modular Expansion Joints shall be installed to replace the expansion joints at Piers 6 and 11
 2. See Special Provisions for a list of Approved Modular Expansion Joints Systems.
 3. Joints shall provide a minimum total movement of 150 mm.
 4. The Sliding Plate Assemblies shall be Hot-Dip Galvanized in accordance with ASTM A-123.
 5. Sliding Plate Assemblies shall be provided for the sidewalk & barrier and the parapet at each Modular Joint location. Cost of furnishing and installing Sliding Plate Assemblies shall be included with Modular Expansion Joint 160 mm. Contractor shall submit shop drawings showing the plate dimensions based on the actual joint system selected.
 6. The Contractor shall verify ALL dimensions in the field before fabrication of Modular Joints and Sliding Plate Assemblies.
 7. Box Spacing and Stud Spacing shall be per Modular Joint Manufacturer.
 8. Modular expansion joints shall be assembled in their final relative position with the ends in place for shop inspection and acceptance.
 9. Support box should be rigidly attached to diaphragm by adjustable bracket, stools or shims. Cost is included in the Modular Expansion Joint 160 mm.

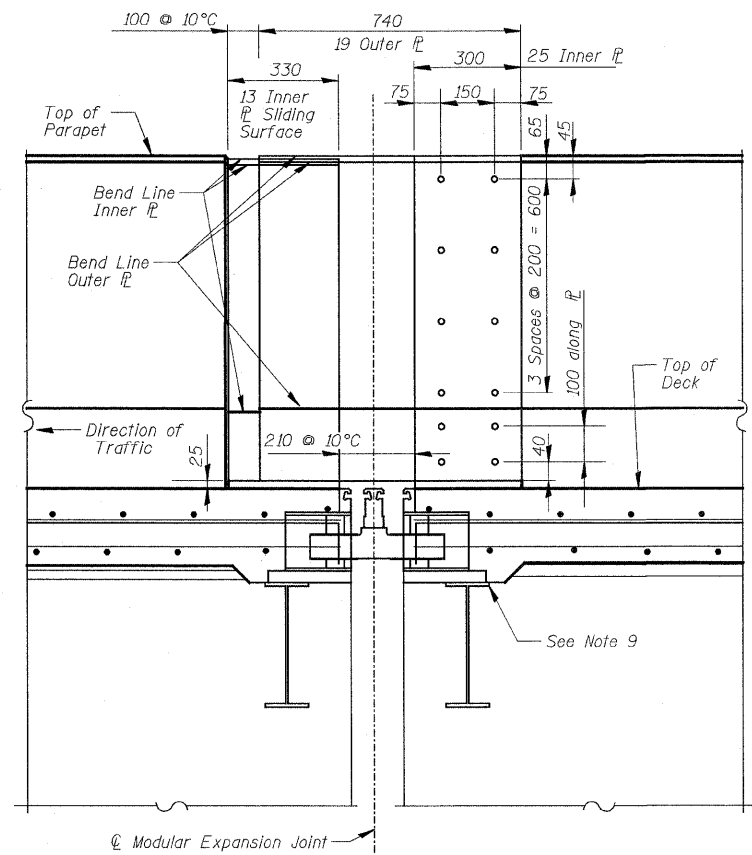
BILL OF MATERIAL

ITEM	UNIT	QTY.
* Modular Expansion Joint 160mm	m	31.2

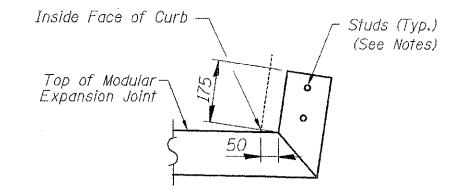
* See Special Provision in Contract



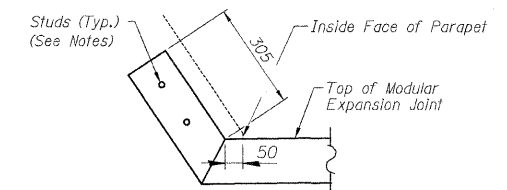
SECTION A-A
(Parapet Sliding P Assembly)



SECTION B-B
(Parapet Sliding P Assembly at Sidewalk)



MODULAR EXPANSION JOINT UPRTURN DETAIL AT CURB



MODULAR EXPANSION JOINT UPRTURN DETAIL AT PARAPET

REVISIONS		ILLINOIS DEPARTMENT OF TRANSPORTATION
NAME	DATE	
		MODULAR EXPANSION JOINT II
		SOUTHWEST HIGHWAY OVER
		B&O RAILROAD AND STONY CREEK
		FAU 3578 SECTION 15 VB-1-F
		STRUCTURE NUMBER 016-2771
		COOK COUNTY STATION 4+716.497
		SCALE: NONE DRAWN BY: R. DiGiullo
		DATE: MAY 22, 2009 CHECKED BY: A. Durbak

FOR INFORMATION ONLY

q:\1dot\9556_a0\dr\awings\struc\fabrication_plans\30A_FAB_exp_joint.dgn
 5/29/2009 10:04 PM
 jvermillion(Rdwy_Lisle)
 PATRICK ENGINEERING INC. Lisle, Illinois