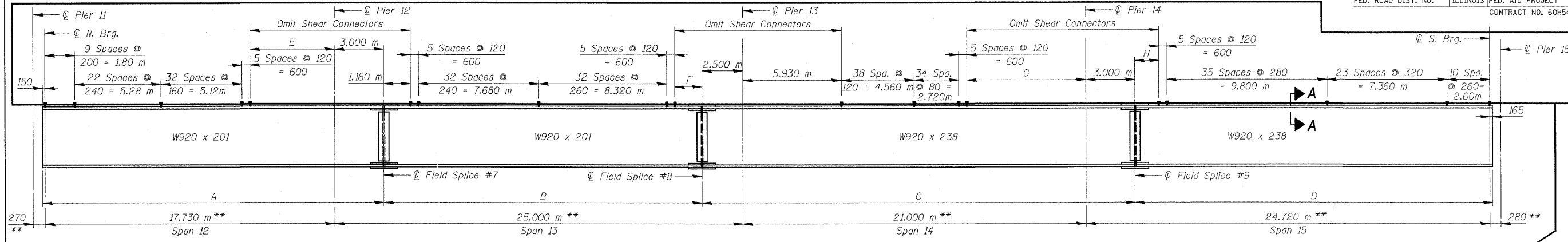


F.A.U. RTE.	SECTION	COUNTY	TOTAL SHEETS NO.	SHEET NO.
3578	15 VB-1-F	COOK	62	37
STA.	TO STA.			
FED. ROAD DIST. NO.	ILLINOIS	FED. AID PROJECT		
CONTRACT NO. 60H54				



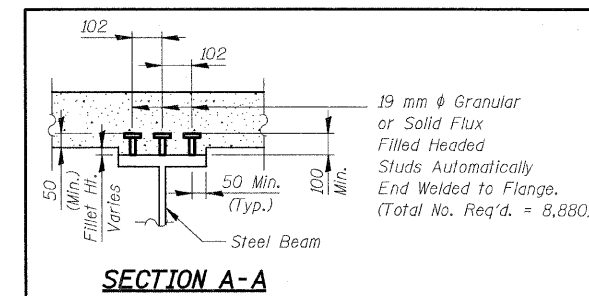
**BEAM DIMENSIONS (In meters)**

BEAM	A*	B*	C*	D*	E*	F*	G*	H*
C1	20.883	19.503	26.503	21.888	4.933	1.143	7.193	1.363
C2	20.881	19.501	26.501	21.886	4.931	1.141	7.191	1.361
C3 thru C8	20.880	19.500	26.500	21.885	4.930	1.140	7.190	1.360
C9	20.881	19.501	26.501	21.886	4.931	1.141	7.191	1.361
C10	20.902	19.503	26.503	21.888	4.952	1.143	7.193	1.363

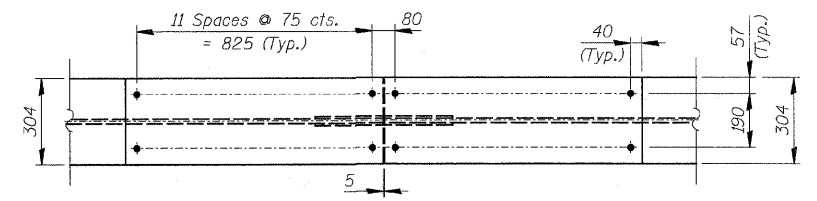
\* Measured along  $\phi$  Beam

\*\* Measured along  $\phi$  SW Highway

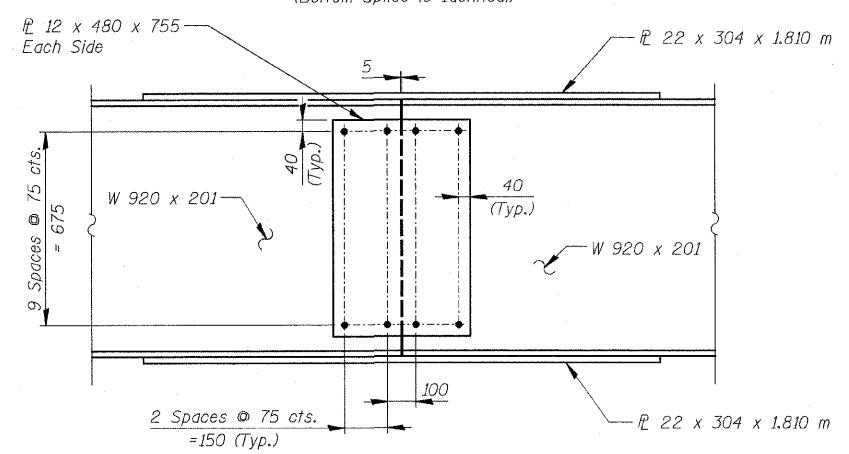
**BEAM ELEVATION**



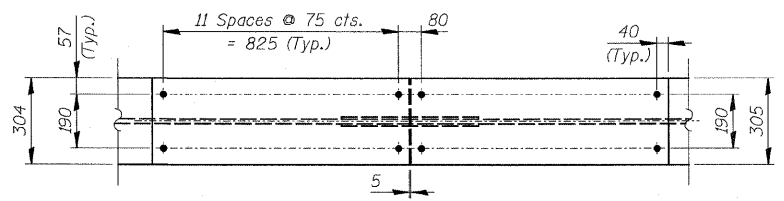
FOR INFORMATION ONLY



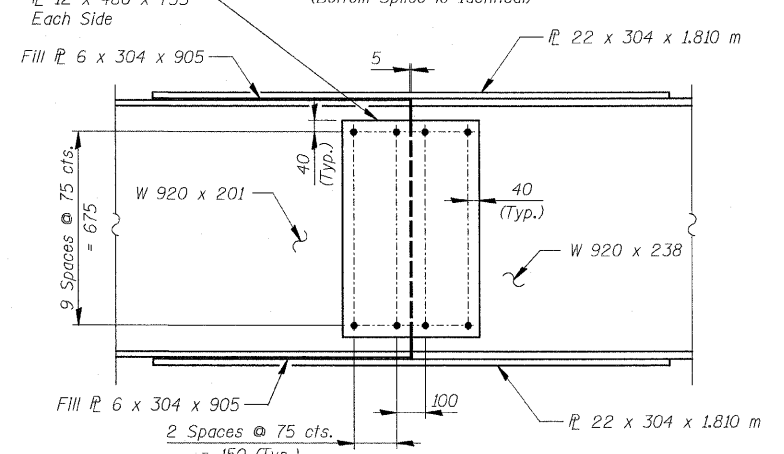
**TOP PLAN**  
(Bottom Splice is Identical)



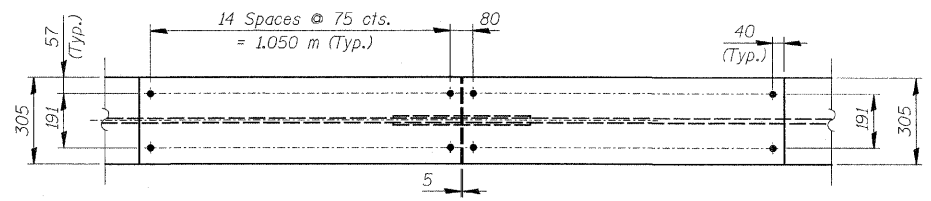
**ELEVATION**  
**FIELD SPLICE #7**



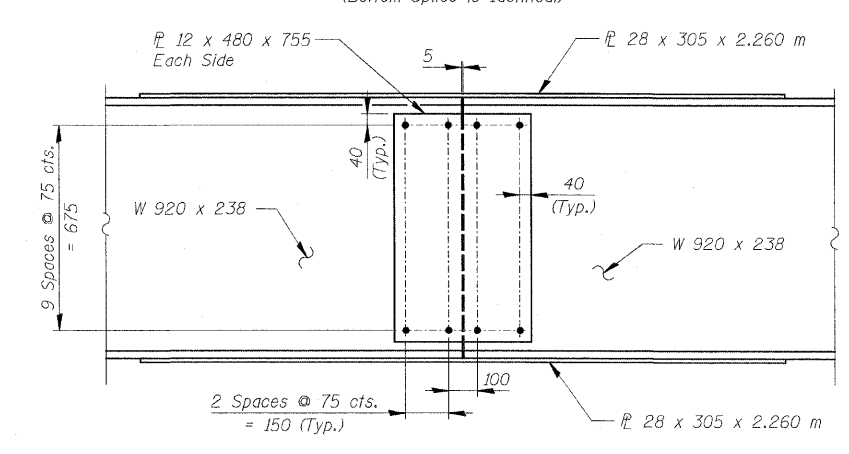
**TOP PLAN**  
(Bottom Splice is Identical)



**ELEVATION**  
**FIELD SPLICE #8**



**TOP PLAN**  
(Bottom Splice is Identical)



**ELEVATION**  
**FIELD SPLICE #9**

**NOTES:**

- For Top of Beam Elevations, Table of Moments and Reactions see Sheet SA34.
- All Wide Flange Beams and Splice Plate Material, except Fill Plates, shall be AASHTO M270 M Grade 345 and shall meet Notch Toughness Requirements.
- All dimensions are in millimeters (mm) except as noted.

REVISIONS	
NAME	DATE

**ILLINOIS DEPARTMENT OF TRANSPORTATION**  
**BEAM DETAILS - UNIT III**  
**SOUTHWEST HIGHWAY OVER**  
**B&O RAILROAD AND STONY CREEK**  
 FAU 3578 SECTION 15 VB-1-F  
 STRUCTURE NUMBER 016-2771  
 COOK COUNTY STATION 4+716.497  
 SCALE: NONE DRAWN BY: M. Tryon  
 DATE: MAY 22, 2009 CHECKED BY: G. Hattestad

c:\p101\9556\_a0\dr\awings\struc\fabr\info\plans\37\_FAB\_beam\_UnitIII.dgn  
 jvermillion(Rdwy-Lisie)  
 5/29/2009 10:08:41 PM

