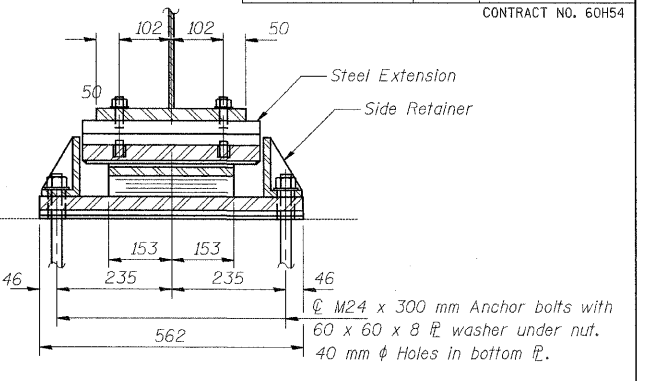
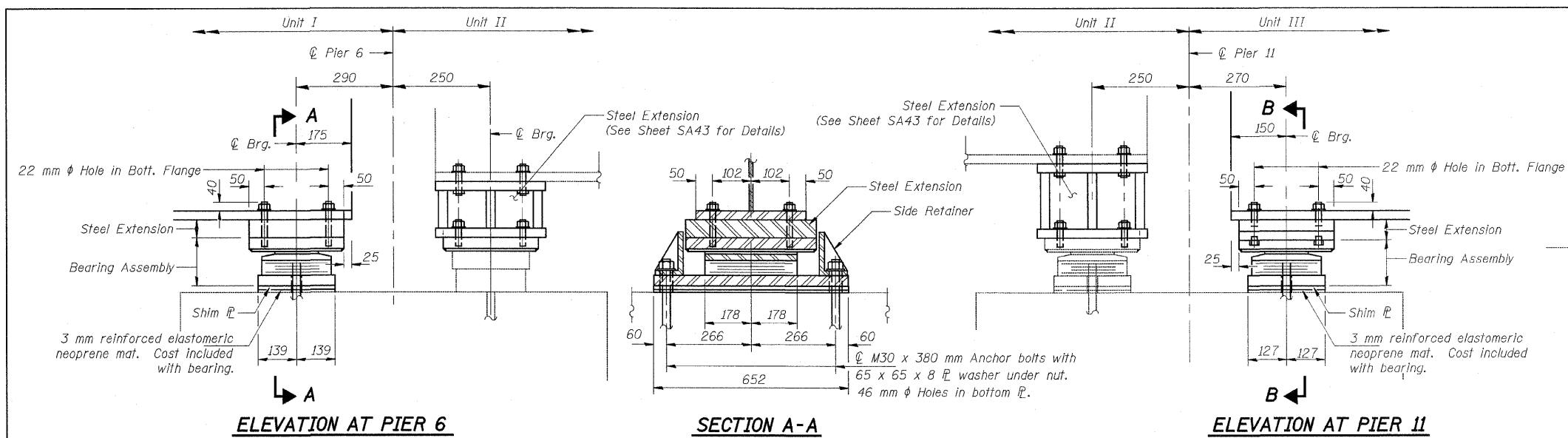


F.A.L. RTE.	SECTION	COUNTY	TOTAL SHEETS	SHEET NO.
3578	15 VB-1-F	COOK	62	42
STA.	TO STA.			
FED. ROAD DIST. NO.	ILLINOIS FED. AID PROJECT		CONTRACT NO. 60H54	



ELEVATION AT PIER 6

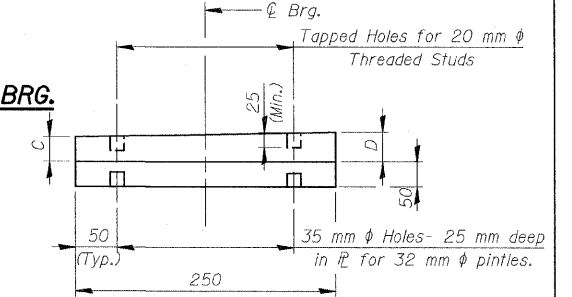
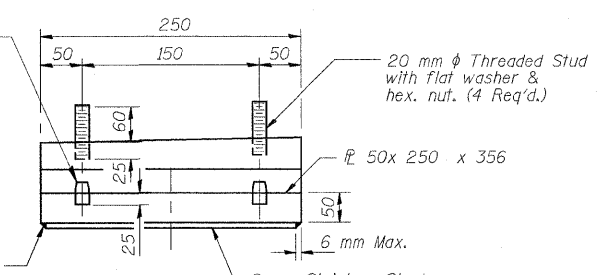
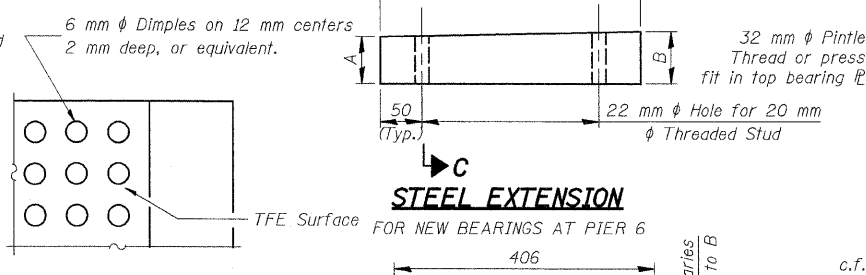
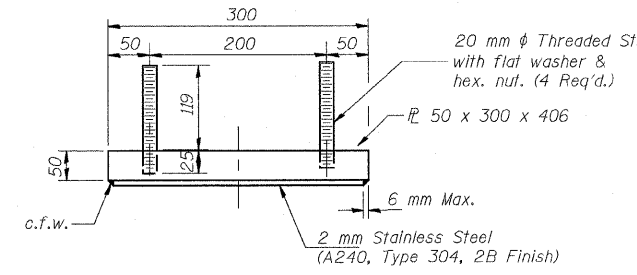
SECTION A-A

ELEVATION AT PIER 11

SECTION B-B

TYPE II ELASTOMERIC EXP. BRG.

TYPE II ELASTOMERIC EXP. BRG.



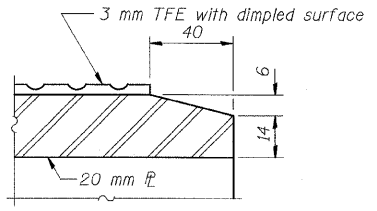
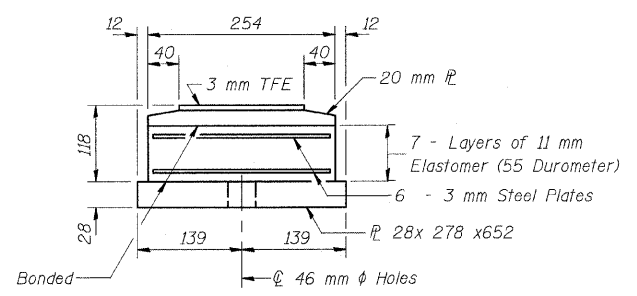
TOP BEARING ASSEMBLY

PLAN-TFE SURFACE

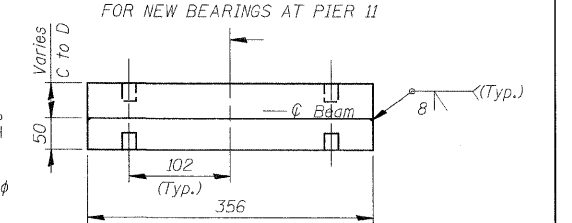
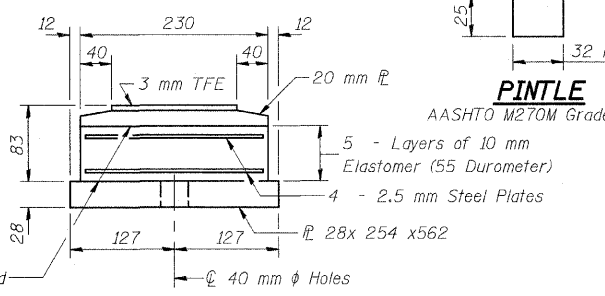
STEEL EXTENSION

TOP BEARING ASSEMBLY

ELEVATION STEEL EXTENSION



SECTION C-C STEEL EXTENSION DIMENSIONS



BOTTOM BEARING ASSEMBLY

SECTION THRU TFE

Bearing Location	Pier 6		Pier 11	
	A	B	C	D
Beam 1	39	49	33	43
Beam 2	43	53	53	63
Beam 3	45	55	34	44
Beam 4	40	50	34	44
Beam 5	32	42	34	44
Beam 6	30	40	33	43
Beam 7	24	34	33	43
Beam 8	39	49	33	43
Beam 9	-	-	55	65
Beam 10	-	-	30	40

PINTLE
AASHTO M270M Grade 345

BOTTOM BEARING ASSEMBLY

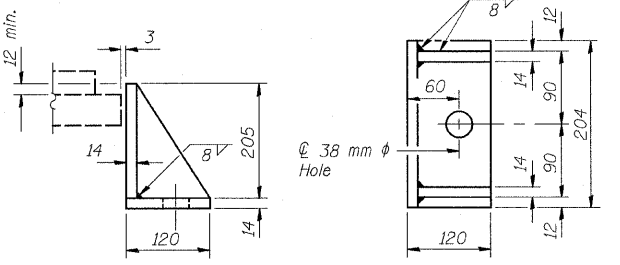
END VIEW STEEL EXTENSION

BILL OF MATERIAL

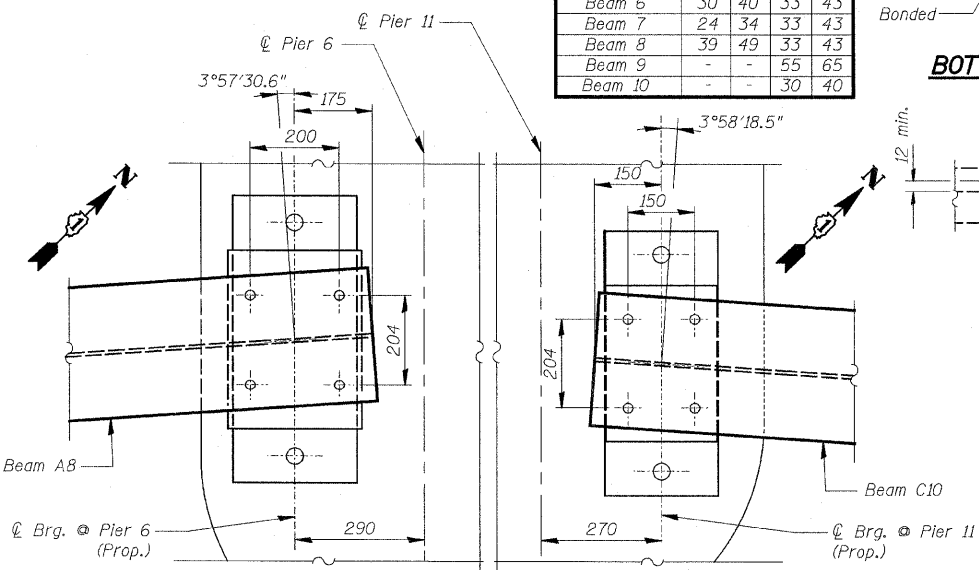
Item	Unit	Total
Elastomeric Bearing Assembly Type II	Each	18
Anchor Bolts, M24	Each	20
Anchor Bolts, M30	Each	16

NOTES

- Prior to ordering any material, the Contractor shall verify existing bridge seat elevations, all bearing height, and proposed bottom of beam elevations prior to fabrication of Steel Extensions.
- Cost of steel extensions is included with Furnishing Structural Steel.
- See Sheet SA40 for Setting Anchor Bolts at Expansion Bearing.
- See Sheet SA46 for Anchor Bolt Installation.

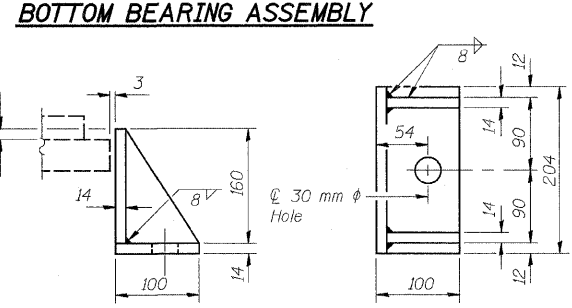


SIDE RETAINER
FOR NEW BEARINGS AT PIER 6
Equivalent rolled angle with stiffeners will be allowed in lieu of welded plates.



BEAM AB AT PIER 6

BEAM C10 AT PIER 11



SIDE RETAINER
FOR NEW BEARINGS AT PIER 11
Equivalent rolled angle with stiffeners will be allowed in lieu of welded plates.

Side retainers and other steel members required for the bearing assembly shall be included in the cost of Elastomeric Bearing Assembly, Type II.

REVISIONS	
NAME	DATE

ILLINOIS DEPARTMENT OF TRANSPORTATION
BEARING DETAILS
PIERS 6 & 11
SOUTHWEST HIGHWAY OVER
B&O RAILROAD AND STONY CREEK
FAU 3578 SECTION 15 VB-1-F
STRUCTURE NUMBER 016-2771
COOK COUNTY STATION 4+716.497
SCALE: NONE DRAWN BY: M. Tryon
DATE: MAY 22, 2009 CHECKED BY: G. Haffstedt

FOR INFORMATION ONLY

5/29/2009 10:02:02 AM J:\vermillion\rdwy\Lislie\103902.PM
 q:\icot\9556_a0\drawings\struc\fabr\location\plans\42_fab_brgs_pier_6_ii.dgn

