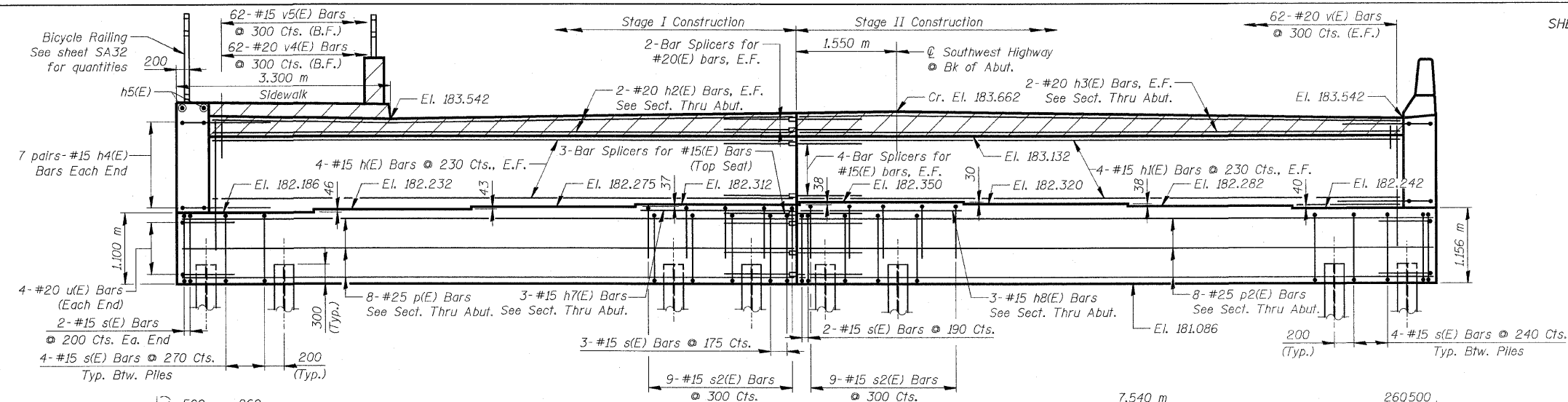


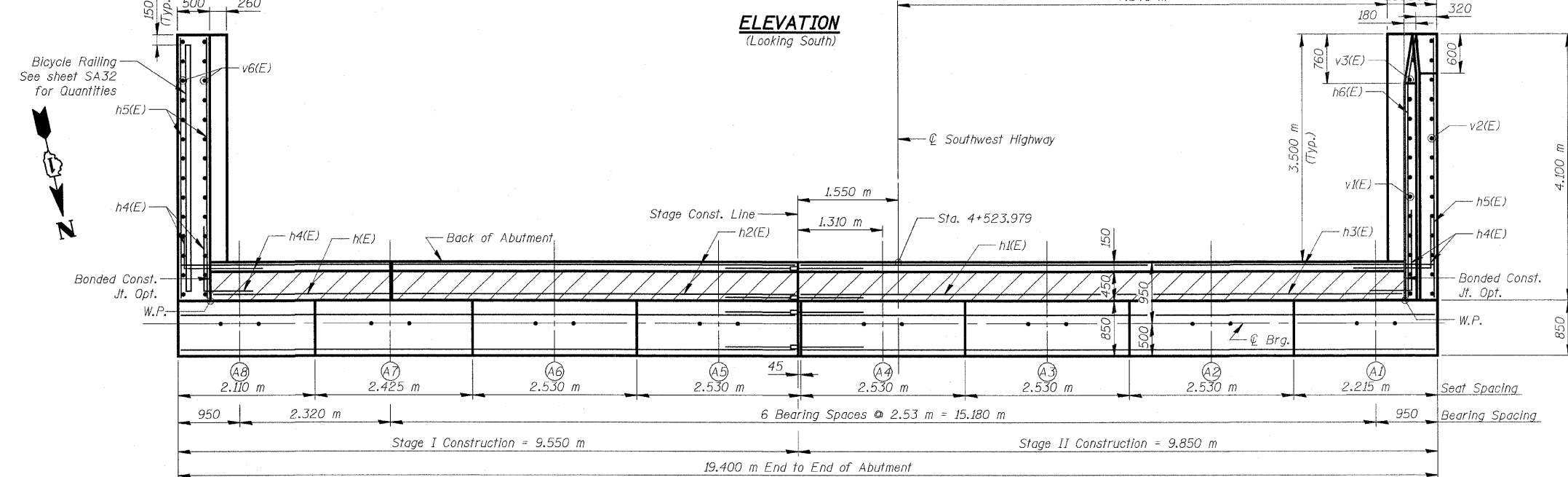
F.A.U. RTE.	SECTION	COUNTY	TOTAL SHEETS	SHEET NO.
3578	15 VB-1-F	COOK	62	46
STA.		TO STA.		
FED. ROAD DIST. NO.		ILLINOIS FED. AID PROJECT		CONTRACT NO. 60H54

NOTES

- Reinforcement bars designated (E) shall be Epoxy Coated.
 - Bars indicated thus 20 x 3 - #15 etc. indicates 20 lines of bars with 3 lengths per line.
 - All dimensions are in millimeters (mm) except as noted.
- ☐ - Indicates concrete placed after superstructure forms have been removed. Quantity of concrete included with Concrete Superstructure.



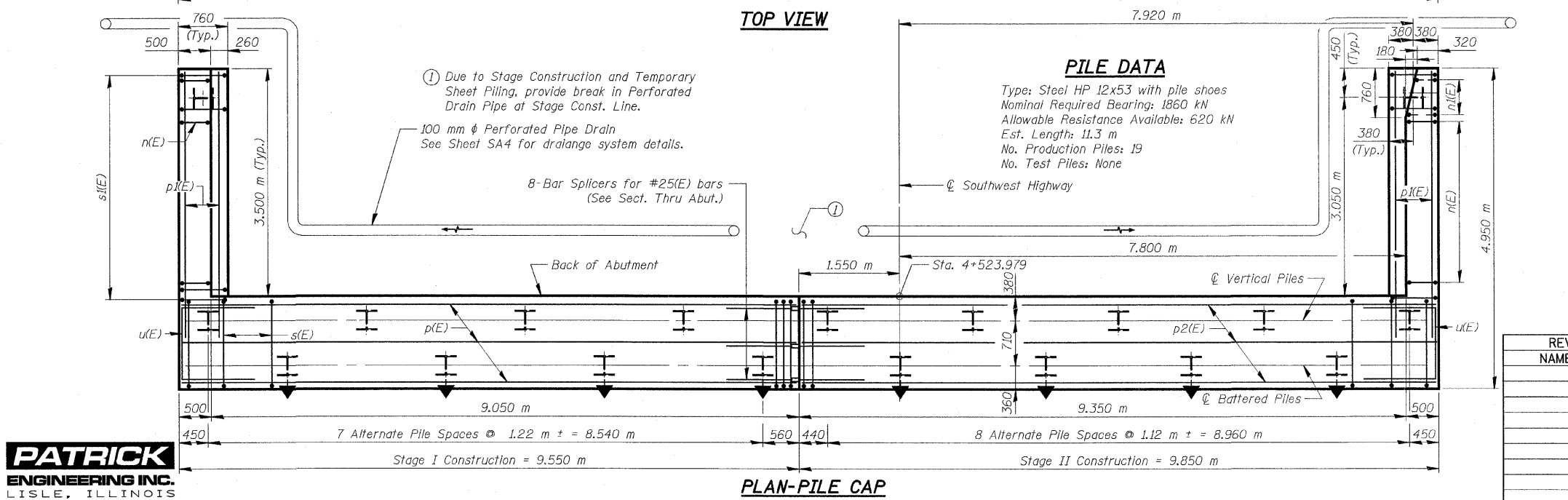
ELEVATION
(Looking South)



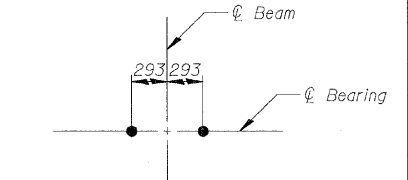
TOP VIEW

PILE DATA

Type: Steel HP 12x53 with pile shoes
 Nominal Required Bearing: 1860 kN
 Allowable Resistance Available: 620 kN
 Est. Length: 11.3 m
 No. Production Piles: 19
 No. Test Piles: None



PLAN-PILE CAP



ANCHOR BOLT DETAIL

BILL OF MATERIAL

Bar	No.	Size	Length (m)	Shape
h(E)	8	#15	8.95	—
h1(E)	8	#15	9.25	—
h2(E)	4	#20	8.95	—
h3(E)	4	#20	9.25	—
h4(E)	28	#15	1.50	—
h5(E)	28	#15	4.00	—
h6(E)	8	#15	4.03	—
h7(E)	3	#15	2.39	—
h8(E)	3	#15	2.48	—
n(E)	27	#20	3.20	—
n1(E)	6	#20	1.60	—
p(E)	8	#25	9.45	—
p1(E)	12	#25	4.00	—
p2(E)	8	#25	9.75	—
s(E)	69	#15	4.98	□
s1(E)	30	#15	2.92	□
s2(E)	18	#15	2.71	□
u(E)	8	#20	2.88	—
v(E)	124	#20	1.70	—
v1(E)	12	#20	1.98	—
v2(E)	15	#20	1.91	—
v3(E)	3	#20	1.67	—
v4(E)	62	#20	0.99	—
v5(E)	62	#15	0.81	—
v6(E)	30	#20	1.37	—

ITEM	UNIT	TOTAL
Porous Granular Embankment (Special)	m ³	81
Structure Excavation	m ³	200
Concrete Structures	m ³	55.5
Concrete Superstructure	m ³	5.4
Protective Coat	m ²	8
Reinforcement Bars, Epoxy Coated	kg	3,490
Concrete Sealer	m ²	17
Furnishing Steel Piles HP310x79	m	214.7
Driving Piles	m	214.7
Bar Splicers	Each	85
Pile Shoes	Each	19

REVISIONS	NAME	DATE

ILLINOIS DEPARTMENT OF TRANSPORTATION

SOUTH ABUTMENT

SOUTHWEST HIGHWAY OVER B&O RAILROAD AND STONY CREEK

FAU 3578 SECTION 15 VB-1-F
 STRUCTURE NUMBER 016-2171
 COOK COUNTY STATION 4+716.497

SCALE: NONE DRAWN BY: M. Tryon
 DATE: MAY 22, 2009 CHECKED BY: A. Yargioğlu

FOR INFORMATION ONLY

I:\vermillion\rdwy_lisle\10523 PM\qa\ldot\9556_a0\drawings\struc\fabr\location-plans\47_FAB_S_Abut.dgn
 5/22/2009
PATRICK ENGINEERING INC.
 LISLE, ILLINOIS