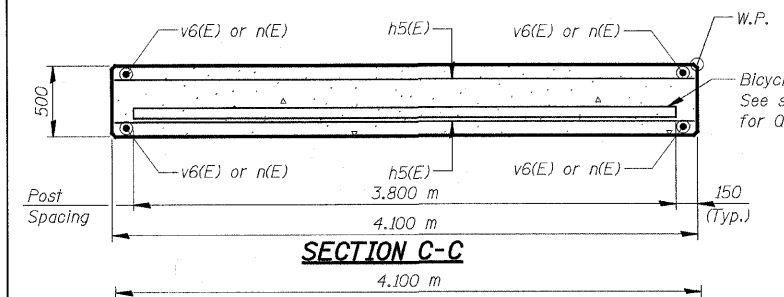
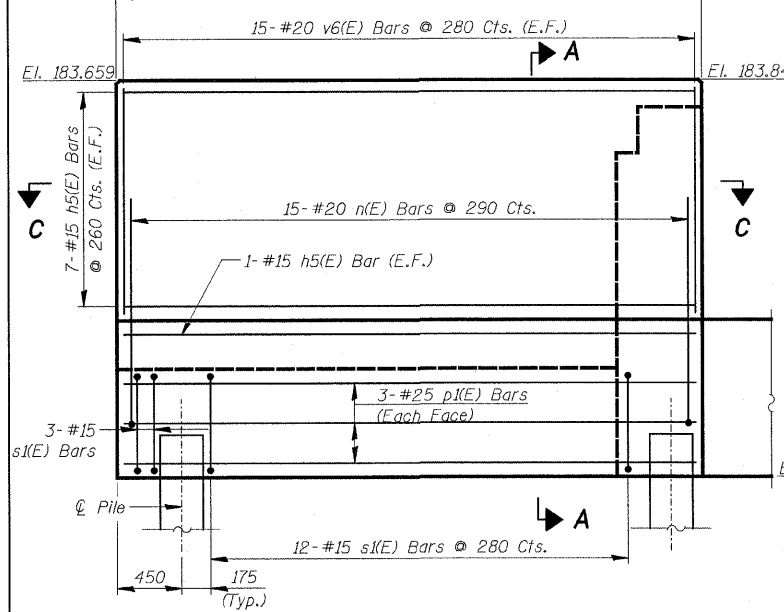


F.A.U. RTE.	SECTION	COUNTY	TOTAL SHEETS	SHEET NO.
3578	15 VB-1-F	COOK	62	47
STA.	TO STA.			
FED. ROAD DIST. NO.	ILLINOIS FED. AID PROJECT		CONTRACT NO. 60H54	

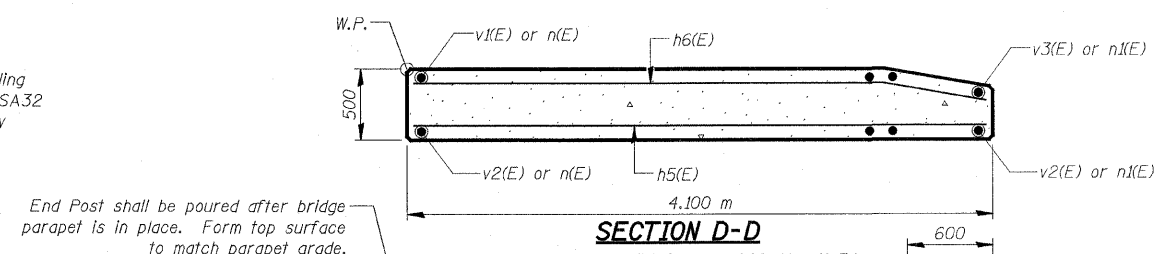
SHEET SA48 of SA110



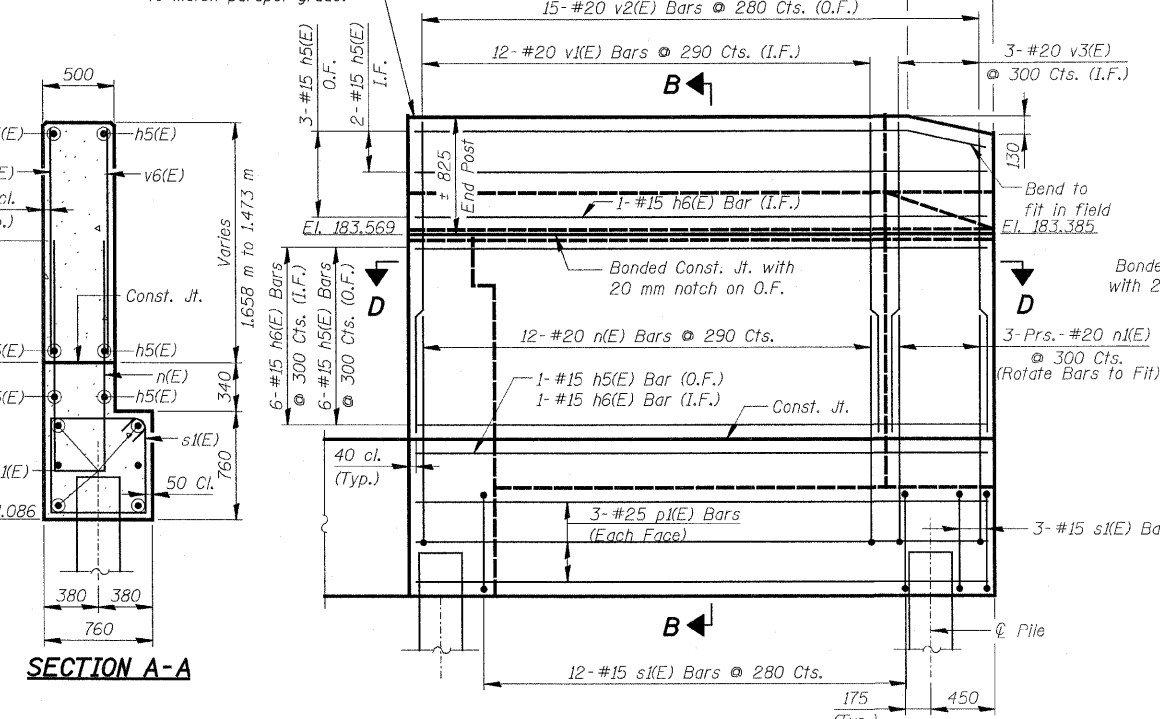
SECTION C-C



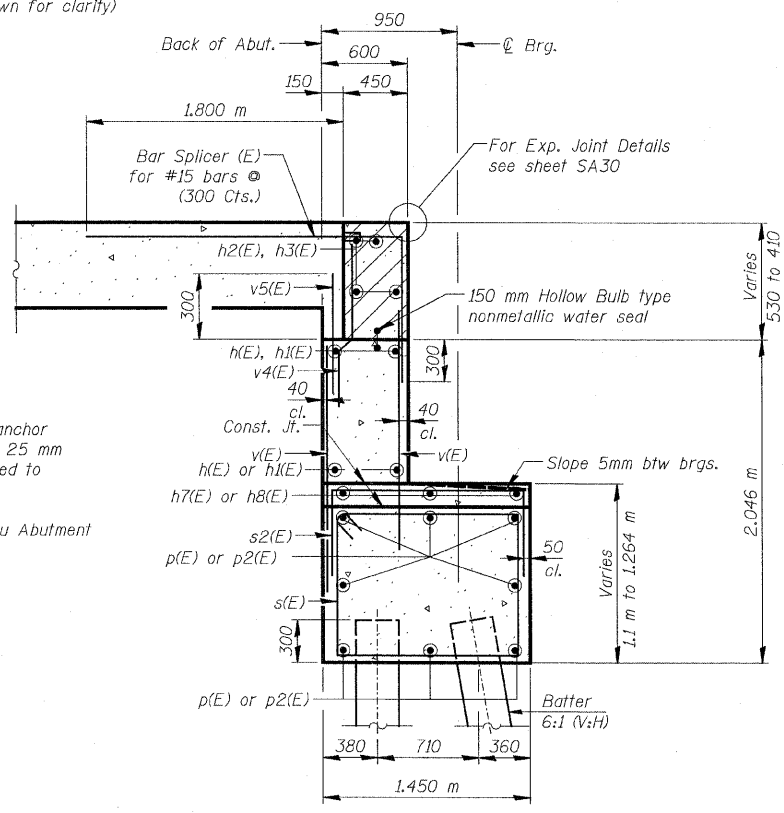
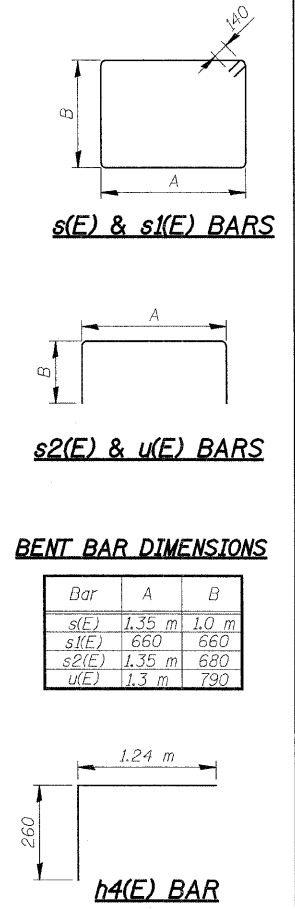
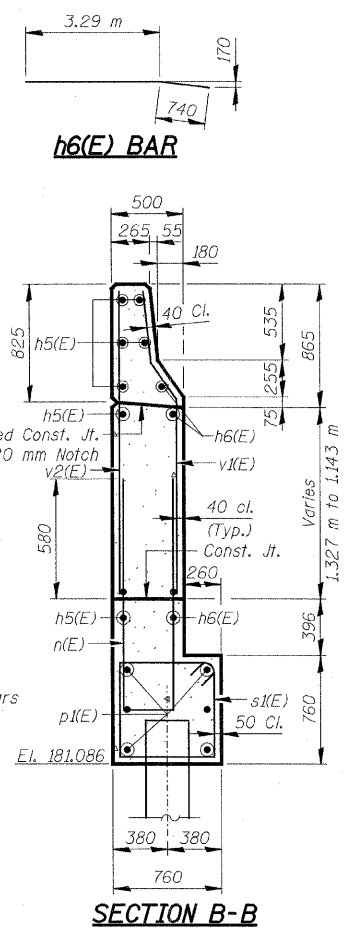
WING WALL ELEVATION
(East Wingwall Looking Northwest)
(Bicycle Railing not shown for clarity)



SECTION D-D



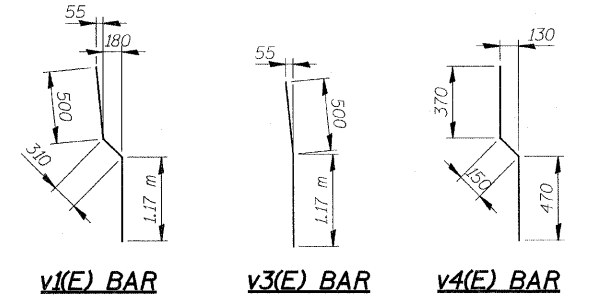
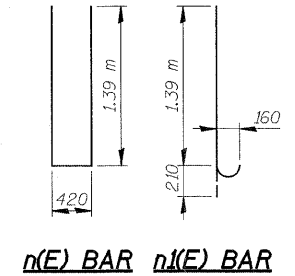
WING WALL ELEVATION
(West Wingwall Looking Southeast)



SECTION THRU ABUTMENT
Dimensions @ Rt. L's

* Place h(E) or h1(E) bars in back of anchor bolt as shown if required to maintain 25 mm clearance. Anchor bolts should be tied to h(E) or h1(E) bars.

See Sheet SA 4 for Typical Section Thru Abutment with Drainage Details.



NOTES

- Hatched area to be poured after superstructure forms have been removed. Quantity of concrete included with Concrete Superstructure.
- Space reinforcement in cap to miss anchor bolts.
- Pour steps monolithically with cap.
- Reinforcement bars designated (E) shall be epoxy coated.
- Quantity of concrete in end post included with Concrete Superstructure on sheet SA21.
- All dimensions are in millimeters (mm) except as noted.
- E.F. = Each Face, I.F. = Inside Face, O.F. = Outside Face

REVISIONS		ILLINOIS DEPARTMENT OF TRANSPORTATION SOUTH ABUTMENT DETAILS SOUTHWEST HIGHWAY OVER B&O RAILROAD AND STONY CREEK FAU 3578 SECTION 15 VB-1-F STRUCTURE NUMBER 016-2771 COOK COUNTY STATION 4+716.497
NAME	DATE	
		SCALE: NONE DATE: MAY 22, 2009 DRAWN BY: M. Tryon CHECKED BY:

FOR INFORMATION ONLY

q:\1001\9556.ad\drawings\struct\Fabrication\plans\48_FAB_S_Abut-DeTails.dgn
 J:\millions\rdwy_lisle\10929 PM 5/29/2009

