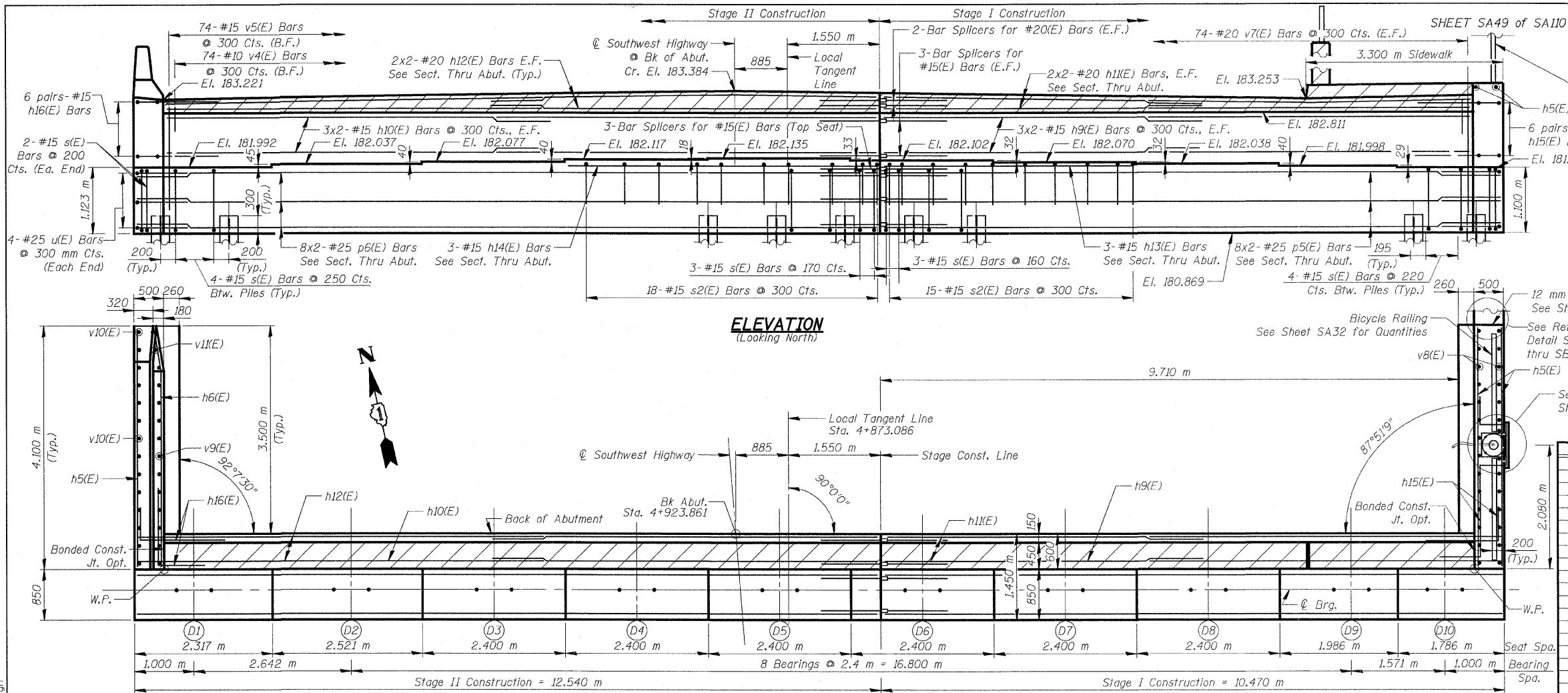


F.A.U. RTE.	SECTION	COUNTY	TOTAL SHEETS	SHEET NO.
3578	15 VB-1-F	COOK	62	48
STA.	TO STA.			
FED. ROAD DIST. NO.	ILLINOIS FED. AID PROJECT		CONTRACT NO. 60H54	



SHEET SA49 of SA110

6 pairs-#15 h16(E) Bars

2-#15 s(E) Bars @ 200 Cts. (Ea. End)

4-#25 u(E) Bars @ 300 mm Cts. (Each End)

3x2-#15 h10(E) Bars @ 300 Cts., E.F.

3-#15 h14(E) Bars See Sect. Thru Abut.

3-#15 s(E) Bars @ 170 Cts.

18-#15 s2(E) Bars @ 300 Cts.

2-#20 v7(E) Bars @ 300 Cts. (E.F.)

3-#15 h13(E) Bars See Sect. Thru Abut.

8x2-#25 p5(E) Bars See Sect. Thru Abut. (Typ.)

4-#15 s(E) Bars @ 220 Cts. Btw. Piles (Typ.)

h5(E)

6 pairs-#15 h15(E) bars

El. 181.969

1.100 m

h5(E)

12 mm Exp. Jt. See Sheet SB2

See Retaining Wall Detail Sheets SB1 thru SB2

h5(E)

See Detail A Sheet SA50

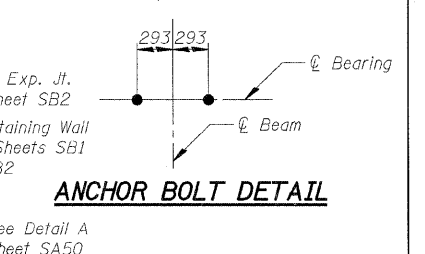
293 293

⊕ Bearing

⊕ Beam

ANCHOR BOLT DETAIL

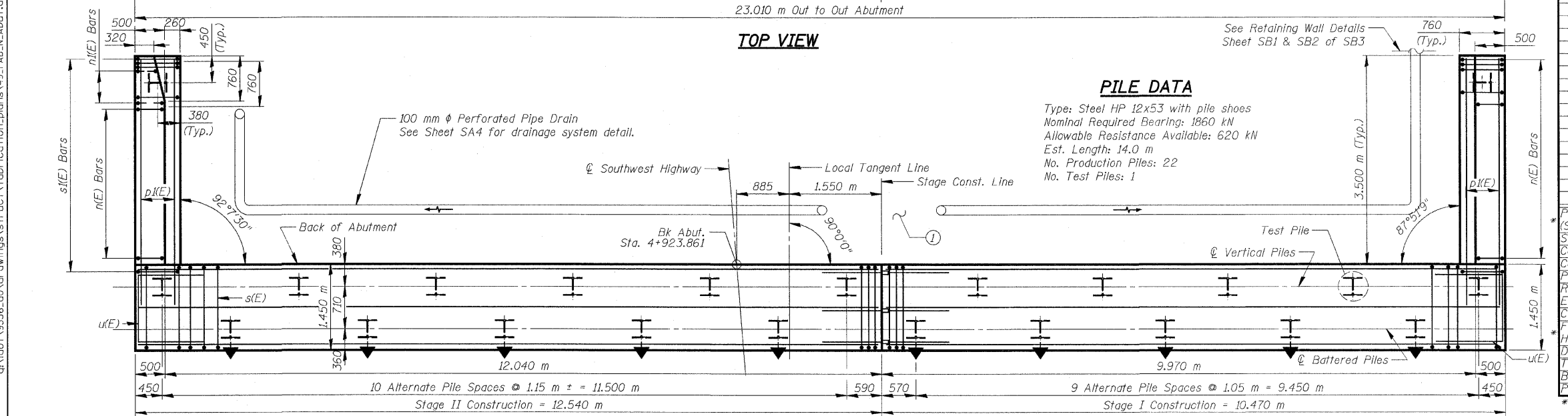
- Indicates concrete placed after superstructure forms have been removed. Quantity of concrete included with Concrete Superstructure.



BILL OF MATERIAL

Bar	No.	Size	Length (m)	Shape
d10(E)	3	#20	1.22	
d11(E)	5	#20	2.68	
h5(E)	25	#15	4.00	
h6(E)	7	#15	4.03	
h9(E)	12	#15	5.29	
h10(E)	12	#15	6.33	
h11(E)	8	#20	5.38	
h12(E)	8	#20	6.42	
h13(E)	3	#15	4.20	
h14(E)	3	#15	5.20	
h15(E)	12	#15	1.50	
h16(E)	12	#15	1.50	
n(E)	27	#20	3.20	
n1(E)	6	#20	1.60	
p1(E)	12	#25	4.00	
p5(E)	8	#25	10.37	
p6(E)	8	#25	12.44	
s(E)	86	#15	4.98	
s1(E)	30	#15	2.92	
s2(E)	33	#15	2.71	
u(E)	8	#20	2.88	
v4(E)	74	#10	0.99	
v5(E)	74	#15	0.81	
v7(E)	148	#20	1.59	
v8(E)	30	#20	1.30	
v9(E)	15	#20	1.91	
v10(E)	12	#20	1.84	
v11(E)	3	#20	1.6	
ITEM	UNIT	TOTAL		
Porous Granular Embankment (Special)	m ³	90		
Structure Excavation	m ³	232		
Concrete Structures	m ³	61.5		
Concrete Superstructure	m ³	6.4		
Protective Coat	m ²	8		
Reinforcement Bars, Epoxy Coated	kg	4,000		
Concrete Sealer	m ²	20		
Furnishing Steel Piles HP310x79	m	308		
Driving Piles	m	308		
Test Pile Steel HP310x79	Each	1		
Bar Splacers	Each	95		
Pile Shoes	Each	23		

* See Special Provisions



PILE DATA

Type: Steel HP 12x53 with pile shoes
 Nominal Required Bearing: 1860 kN
 Allowable Resistance Available: 620 kN
 Est. Length: 14.0 m
 No. Production Piles: 22
 No. Test Piles: 1

PLAN-PILE CAP

① Due to Stage Construction and Temporary Sheet Piling, provide break in Perforated Drain Pipe at Stage Const. Line.

NOTES

1. Reinforcement bars designated (E) shall be Epoxy Coated.
2. Bars indicated thus 20 x 3 - #15 etc. indicates 20 lines of bars with 3 lengths per line.
3. All dimensions are in millimeters (mm) except as noted.

REVISIONS	
NAME	DATE

ILLINOIS DEPARTMENT OF TRANSPORTATION

NORTH ABUTMENT

SOUTHWEST HIGHWAY OVER B&O RAILROAD AND STONY CREEK

FAU 3578 SECTION 15 VB-1-F

STRUCTURE NUMBER 016-2171

COOK COUNTY STATION 4+716.497

SCALE: NONE DRAWN BY: M. Tryon

DATE: MAY 22, 2009 CHECKED BY: A. Yarglooglu

J:\vermillion\rdwy_lisle\5/29/2009 10:09:34 PM q:\vdof\9556_a0\drawings\struct\fabr\function_plans\49_FAB_N_Abut.dgn



FOR INFORMATION ONLY