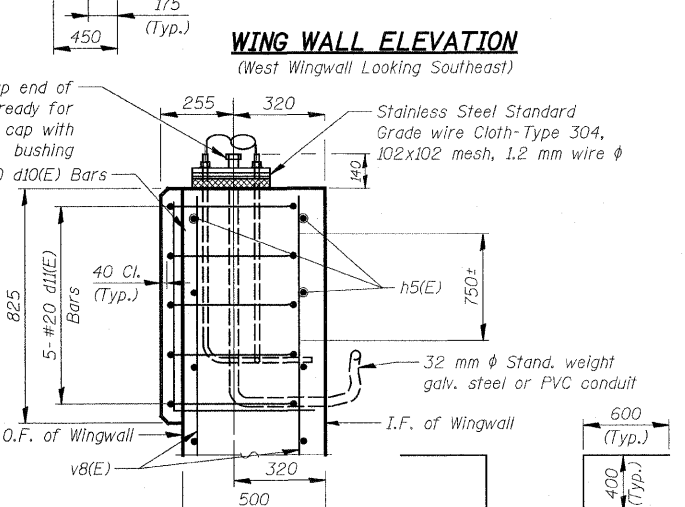
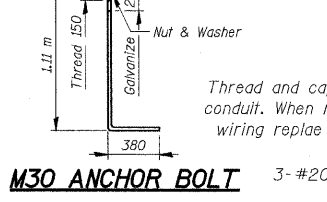
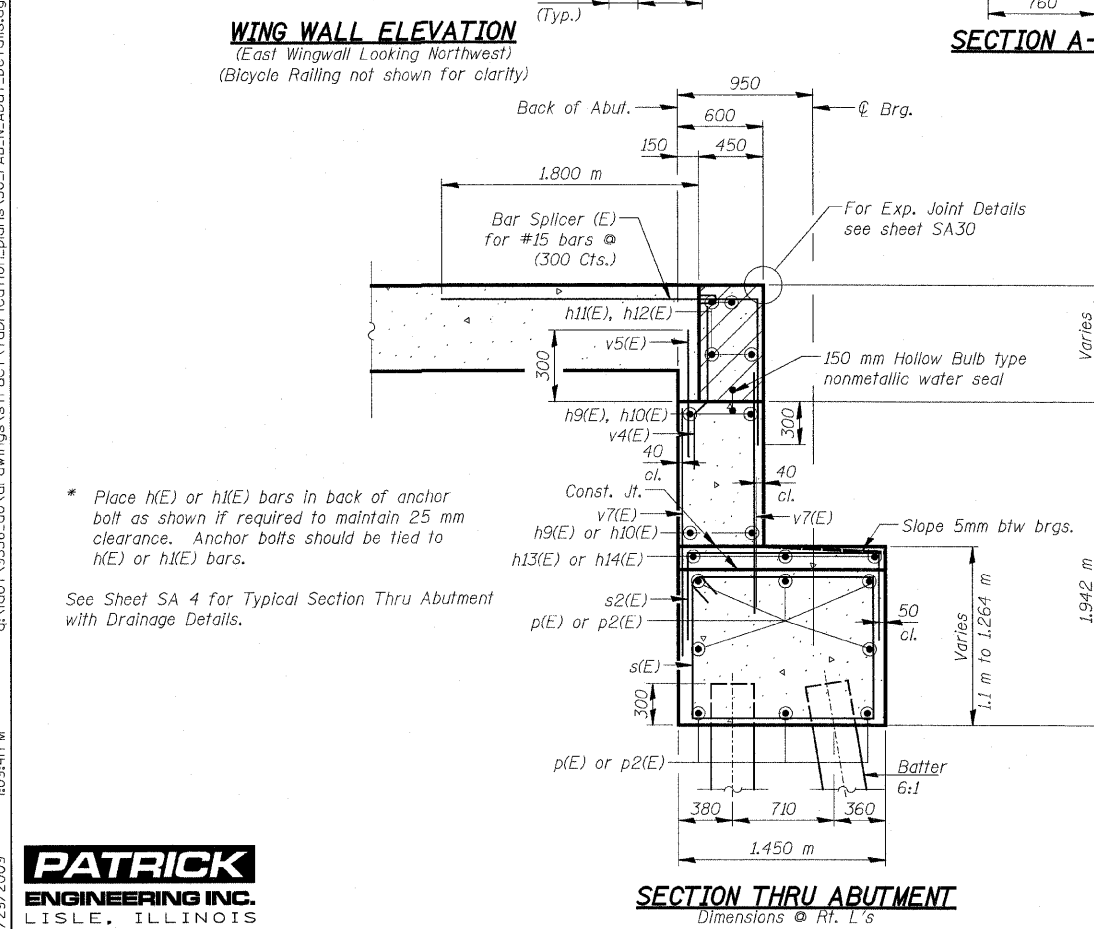
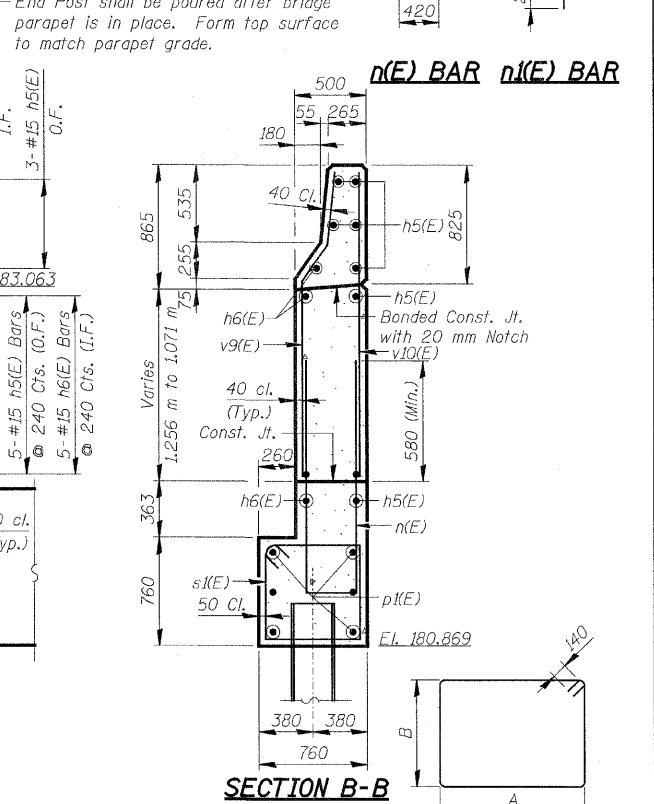
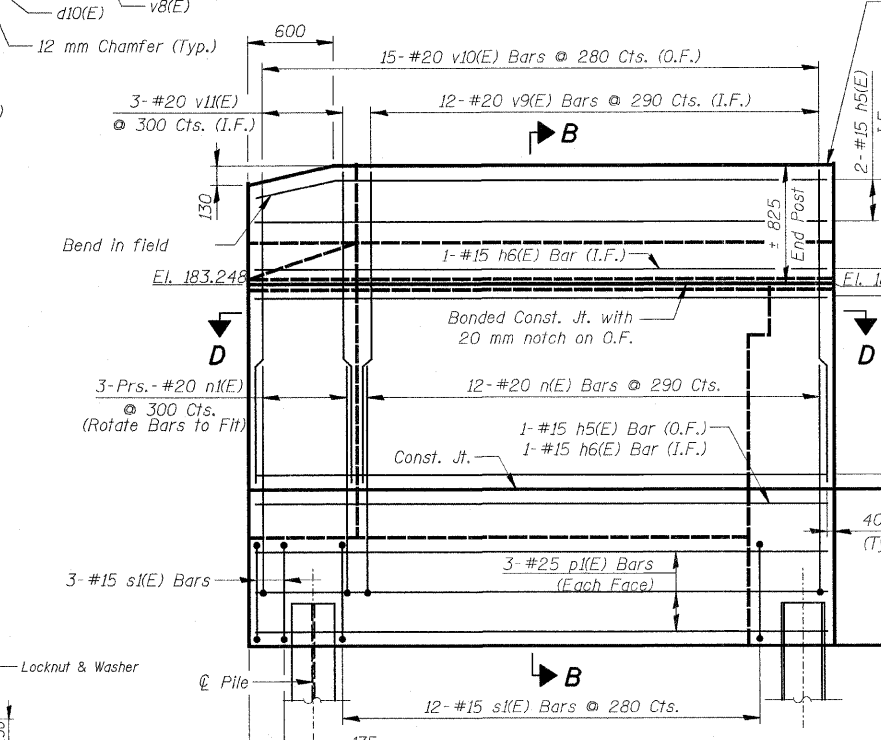
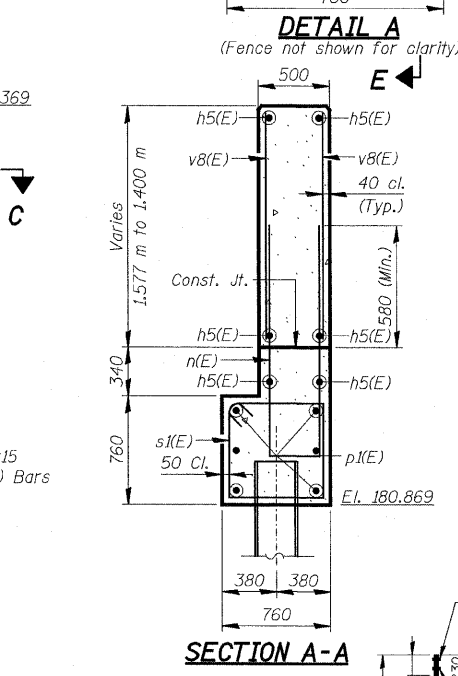
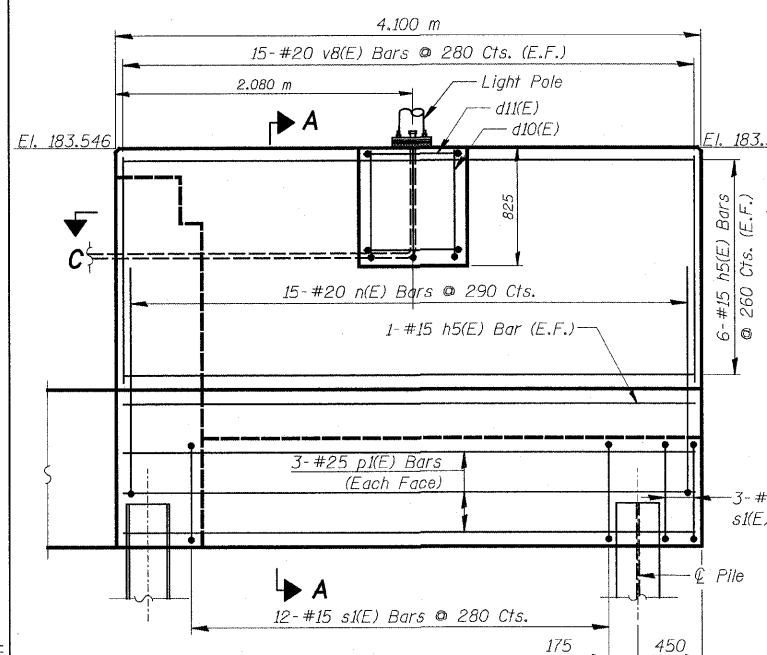
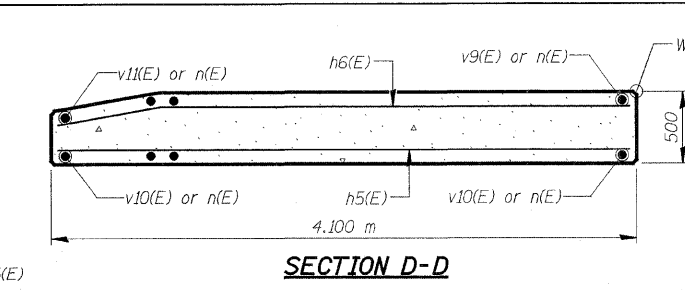
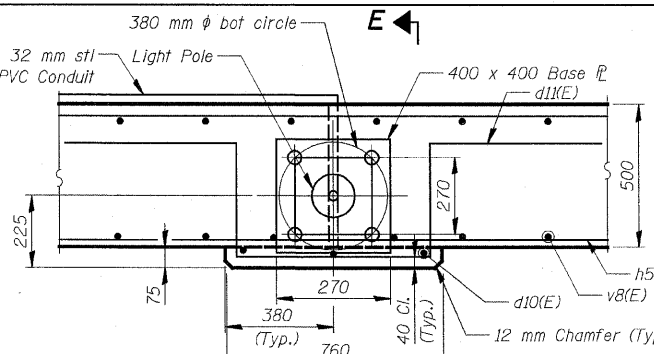
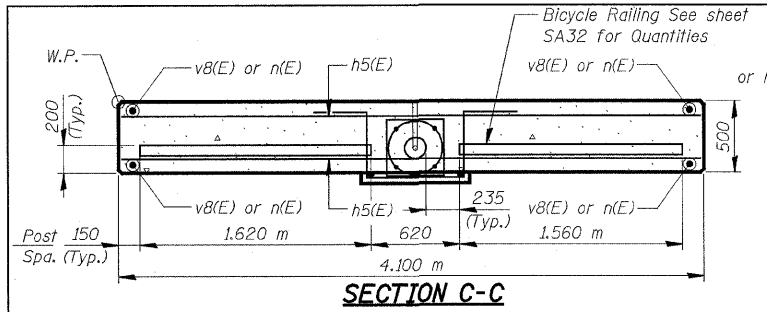


| | | | | |
|---------------------|-----------|--------|------------------|-----------|
| F.A.J. R.T.E. | SECTION | COUNTY | TOTAL SHEETS NO. | SHEET NO. |
| 3578 | 15 VB-1-F | COOK | 62 | 49 |
| STA. | TO STA. | | | |
| FED. ROAD DIST. NO. | ILLINOIS | | FED. AID PROJECT | |
| CONTRACT NO. 60H54 | | | | |



s(E) & s(E) BARS BENT BAR DIMENSIONS

| Bar | A | B |
|-------|--------|-------|
| s(E) | 1.35 m | 1.0 m |
| s1(E) | 660 | 660 |
| s2(E) | 1.35 m | 680 |
| u(E) | 1.3 m | 790 |

- NOTES**
- Hatched area to be poured after superstructure forms have been removed. Quantity of concrete included with Concrete Superstructure.
 - Space reinforcement in cap to miss anchor bolts.
 - Pour steps monolithically with cap.
 - Reinforcement bars designated (E) shall be epoxy coated.
 - Quantity of concrete in end post included with Concrete Superstructure on sheet SA21.
 - All dimensions are in millimeters (mm) except as noted.
 - E.F. = Each Face, I.F. = Inside Face, O.F. = Outside Face
 - Cost of Anchor Bolts & Conduit included with Concrete Structures.

| REVISIONS | | ILLINOIS DEPARTMENT OF TRANSPORTATION NORTH ABUTMENT DETAILS SOUTHWEST HIGHWAY OVER B&O RAILROAD AND STONY CREEK FAU 3578 SECTION 15 VB-1-F STRUCTURE NUMBER 016-2771 COOK COUNTY STATION 4+716.497 |
|-----------|------|---|
| NAME | DATE | |
| | | SCALE: NONE DATE: MAY 22, 2009 DRAWN BY: M. Tryon CHECKED BY: A. Yarglooglu |
| | | |
| | | |
| | | |
| | | |

5/29/2009 10:09:41 PM J:\vermillion\rdwy.L\lisle\h09\41 PM
 q:\lido\9556_a0\dr\awings\str\uct\fabr\locat\on_plans\50_FAB_N_Abut_Details.dgn



FOR INFORMATION ONLY