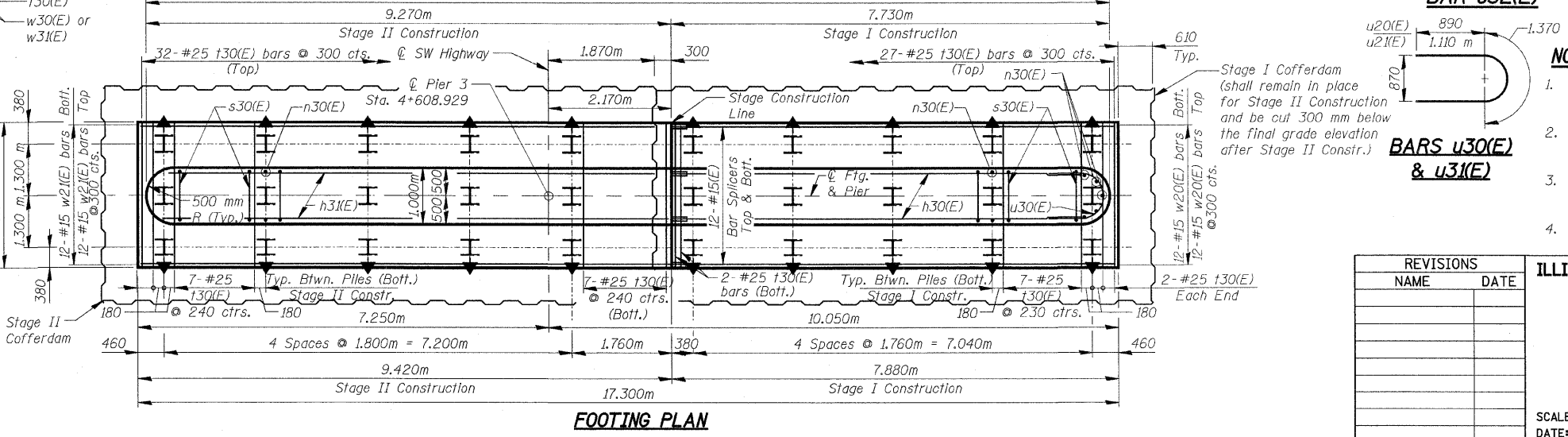
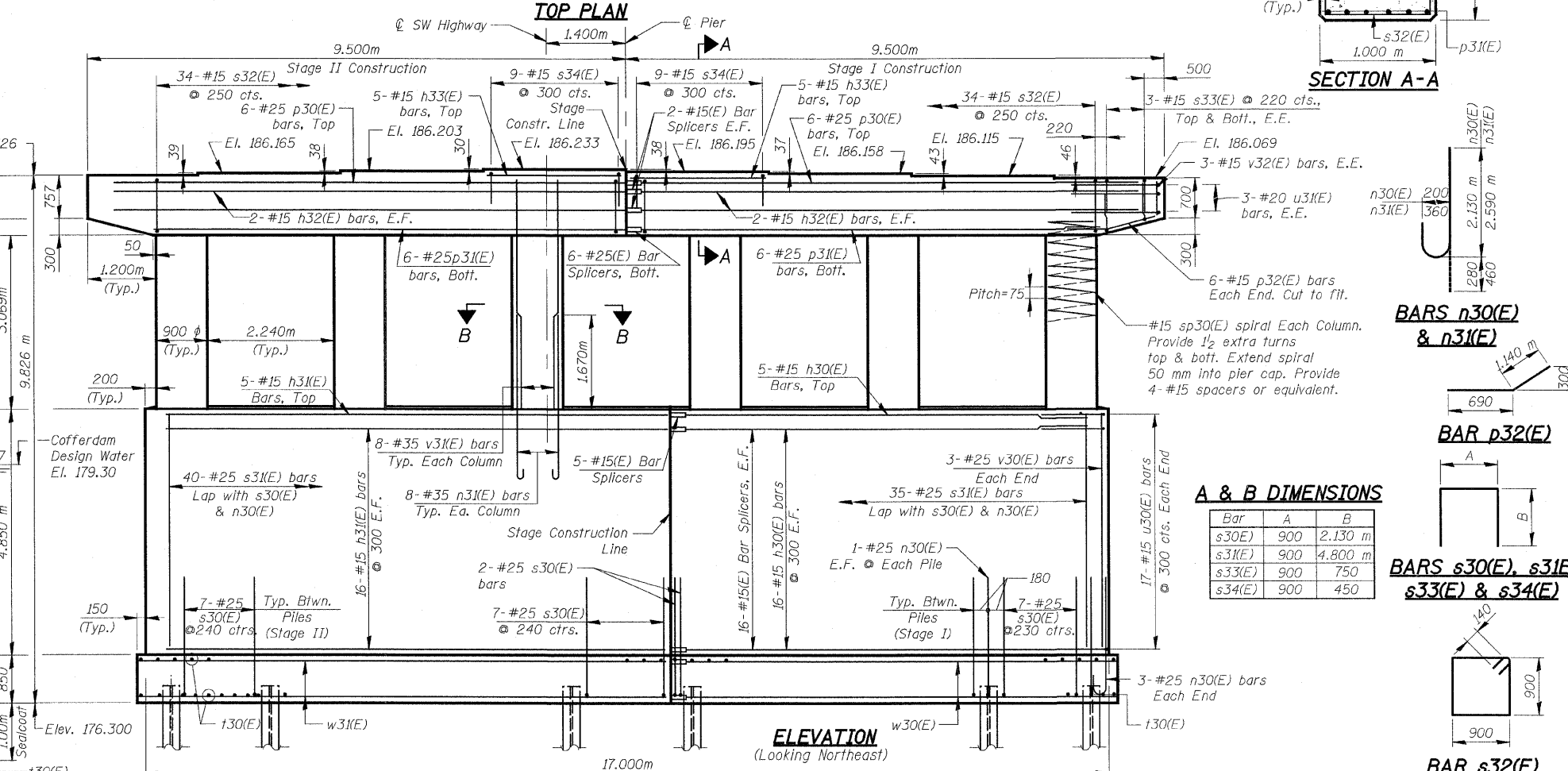
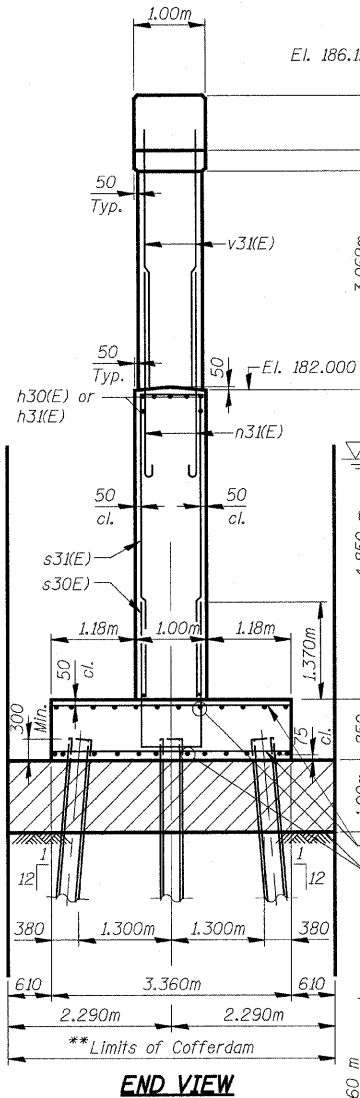
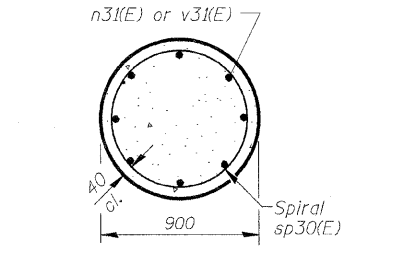
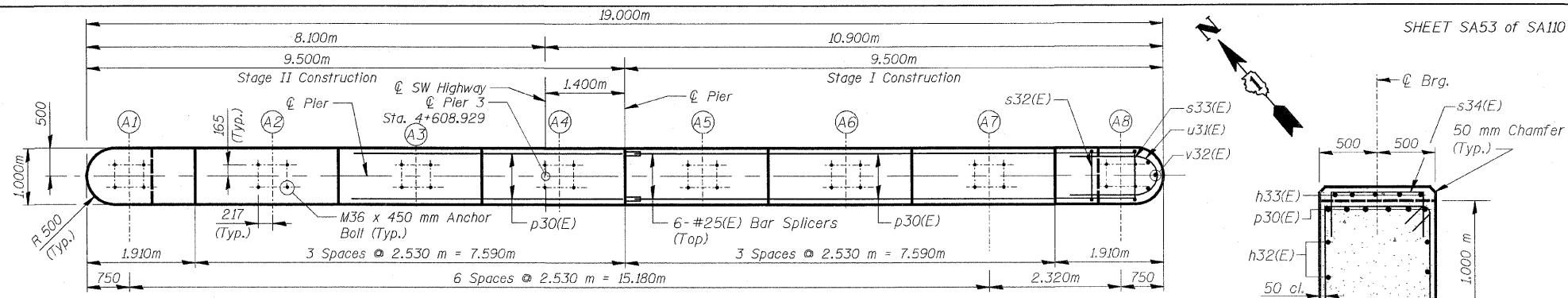


**NOTES:**  
 Space Reinforcement in cap to miss anchor bolts.  
 All edges shall have standard 20 mm chamfer except as noted.  
 Four steps monolithically with cap.

\*\* The bottom of the cofferdam shall be at EL 172.19 or lower. The cofferdam shall have a minimum section modulus of 268,000 mm<sup>4</sup>/m.

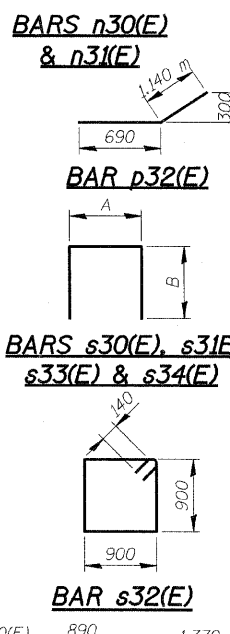
TYP. LAP SPLICE	
BAR SIZE	MIN. LAP
#15	890 mm
#20	1.110 m
#25	1.850 m

F.A.I. RTE.	SECTION	COUNTY	TOTAL SHEETS	SHEET NO.
3578	15 VB-1-F	COOK	62	52
STA. TO STA.		FED. ROAD DIST. NO. ILLINOIS FED. AID PROJECT		
CONTRACT NO. 60H54				



BILL OF MATERIAL				
Bar	No.	Size	Length (m)	Shape
h30(E)	37	#15	7.180	—
h31(E)	37	#15	8.720	—
h32(E)	8	#15	8.950	—
h33(E)	10	#15	2.430	—
n30(E)	26	#25	2.410	—
n31(E)	48	#35	3.050	—
p30(E)	12	#25	8.950	—
p31(E)	12	#25	8.300	—
p32(E)	12	#15	1.830	—
s30(E)	65	#25	5.160	—
s31(E)	75	#25	10.500	—
s32(E)	68	#15	3.880	—
s33(E)	12	#15	2.400	—
s34(E)	18	#15	1.800	—
sp30(E)	6	#15	* 3.120	—
t30(E)	128	#25	3.260	—
u30(E)	34	#15	3.150	—
u31(E)	6	#20	3.590	—
v30(E)	6	#25	4.800	—
v31(E)	48	#35	3.870	—
v32(E)	6	#15	0.600	—
w30(E)	24	#15	7.780	—
w31(E)	24	#15	9.320	—
Cofferdam Excavation	m <sup>3</sup>		356	
Cofferdam (Location-2)	Each		1	
Concrete Structures	m <sup>3</sup>		163.8	
Seal Coat Concrete	m <sup>3</sup>		84.8	
Reinforcement Bars, Epoxy Coated	kg		13,500	
Bar Splicers	Each		77	
Furnishing Steel Piles HP310x79	m		553.9	
Driving Piles	m		553.9	
Test Pile Steel HP310x79	Each		1	
Pile Shoes	Each		30	

A & B DIMENSIONS		
Bar	A	B
s30(E)	900	2.130 m
s31(E)	900	4.800 m
s33(E)	900	750
s34(E)	900	450



- NOTES:**
- Reinforcement bars designated (E) shall be Epoxy Coated.
  - Bars indicated thus 20 x 3 - #15 etc. indicates 20 lines of bars with 3 lengths per line.
  - All dimensions are in millimeters (mm) except as noted.
  - Minimum lap for spirals 770 mm.

**PILE DATA**  
 Type: Steel HP 12x53 with pile shoes  
 Nominal Required Bearing: 1860 kN  
 Allowable Resistance Available: 562 kN  
 Est. Length: 19.1 m  
 No. Production Piles: 29  
 No. Test Piles: 1



REVISIONS	
NAME	DATE

ILLINOIS DEPARTMENT OF TRANSPORTATION  
**PIER 3**  
 SOUTHWEST HIGHWAY OVER  
 B&O RAILROAD AND STONY CREEK  
 FAU 3578 SECTION 15 VB-1-F  
 STRUCTURE NUMBER 016-2171  
 COOK COUNTY STATION 4+716.497  
 SCALE: NONE DRAWN BY: E. Mroozek  
 DATE: MAY 22, 2009 CHECKED BY: G. Hattestad

FOR INFORMATION ONLY