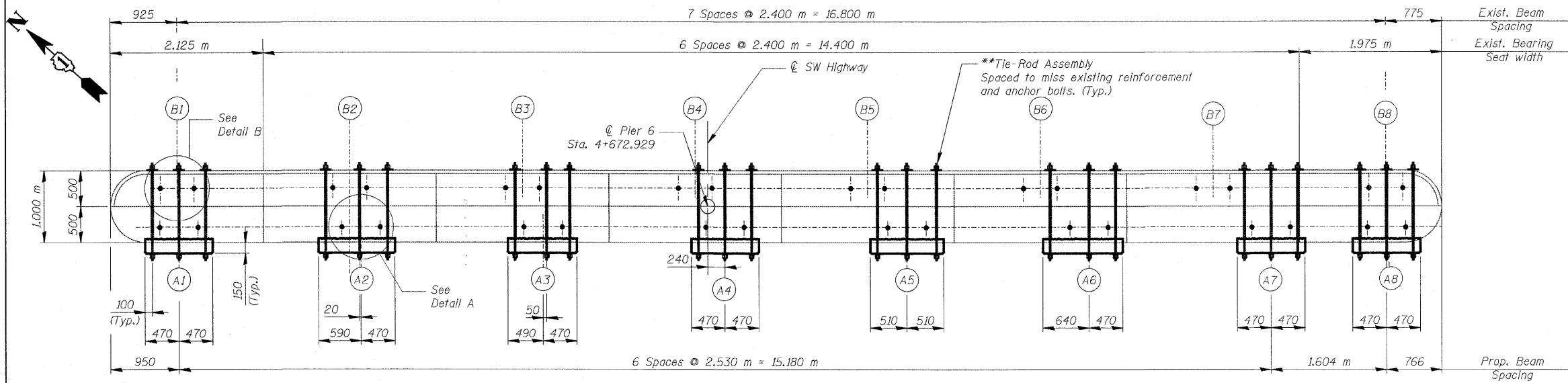
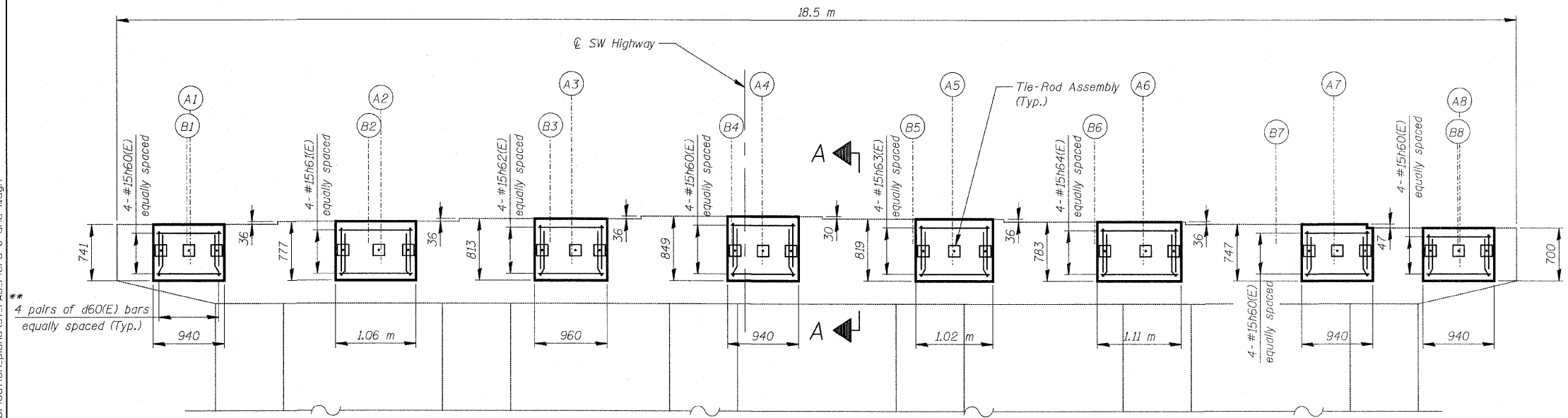


F.A.I. RTE.	SECTION	COUNTY	TOTAL SHEETS	SHEET NO.
3578	15 VB-1-F	COOK	62	56
STA.	TO STA.			
FED. ROAD DIST. NO.	ILLINOIS	FED. AID PROJECT		
CONTRACT NO. 60H54				

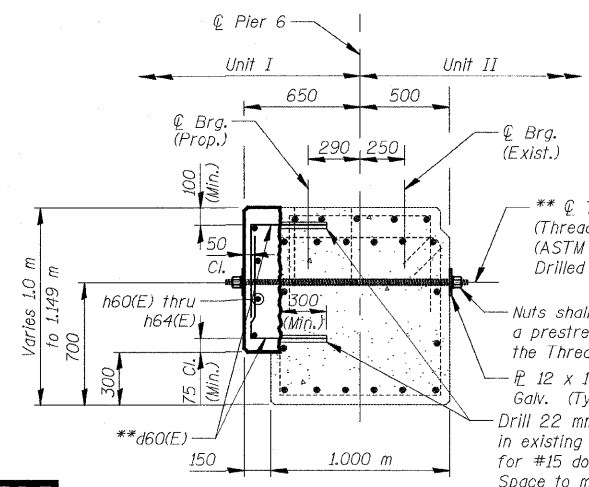


TOP PLAN



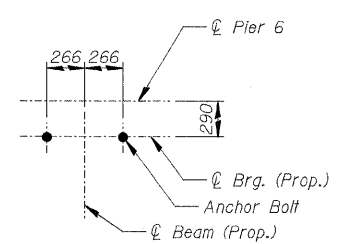
PIER 6 (EXISTING PIER 10) REMOVAL

(Looking Northeast)

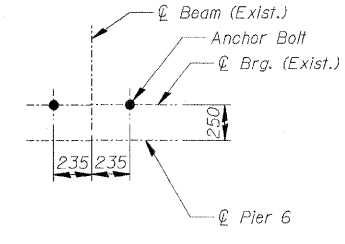


SECTION A-A

** Drill and Grout d60(E) bars and Tie-Rod Assemblies in accordance with Section 584 of the Standard Specifications.



DETAIL A



DETAIL B

BAR d60(E)



BILL OF MATERIAL

Bar	No.	Size	Length (m)	Shape
d60(E)	64	#15	0.97	—
h60(E)	16	#15	0.84	—
h61(E)	4	#15	0.96	—
h62(E)	4	#15	0.86	—
h63(E)	4	#15	0.92	—
h64(E)	4	#15	1.01	—
Concrete Structures			m ³	1.2
Reinforcement Bars, Epoxy Coated			kg	140
Concrete Sealer			m ²	39
Tie-Rod Assemblies			Each	24

* See Special Provisions
 *** Quantity includes quantity required for Pier 6 & Pier 11.

NOTES

- All dimensions are in millimeters (mm) except as noted.
- For details of existing reinforcement in Pier Cap of Pier 6 see Sheet SA98.

REVISIONS	
NAME	DATE

ILLINOIS DEPARTMENT OF TRANSPORTATION
PIER 6
 SOUTHWEST HIGHWAY OVER
 B&O RAILROAD AND STONY CREEK
 FAU 3578 SECTION 15 VB-1-F
 STRUCTURE NUMBER 016-2771
 COOK COUNTY STATION 4+716.497
 SCALE: NONE DRAWN BY: E. Mroozek
 DATE: MAY 22, 2009 CHECKED BY: G. Hatlestad

FOR INFORMATION ONLY

I:\er\millon\rdwy_lisle\529\2009 3:21:0 PM
 G:\DOT\9856_A0\Drawings\STRUCT\Fabrication\plans\ST_FAB_Piers 6 and 10.dgn

