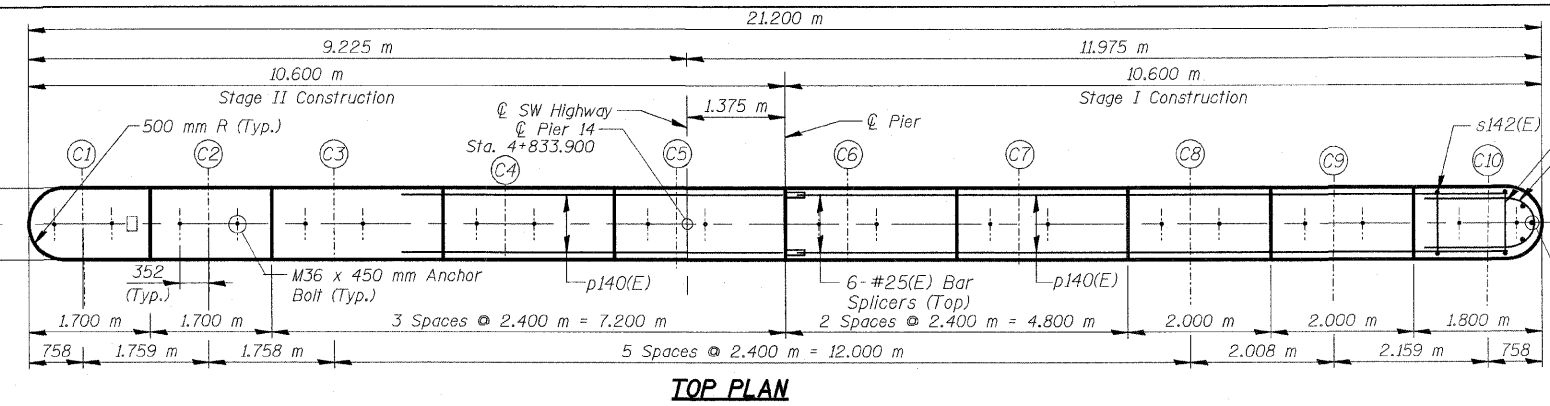


F.A.U. R.T.E.	SECTION	COUNTY	TOTAL SHEETS	SHEET NO.
3578	15 VB-1-F	COOK	62	59
STA.	TO STA.			
FED. ROAD DIST. NO.	ILLINOIS	FED. AID PROJECT		
CONTRACT NO. 60H54				

**NOTES:**  
 Space Reinforcement in cap to miss anchor bolts.  
 All edges shall have standard 20 mm chamfer except as noted.  
 Four steps monolithically with cap.

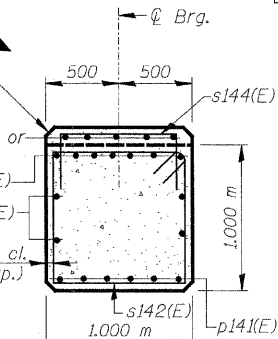
TYP. LAP SPLICE	
BAR SIZE	MIN. LAP
#15	890 mm
#20	1.110 m
#25	1.850 m

NOTE: Use a min. lap splice of 640 for w140(E) & w141(E) bars

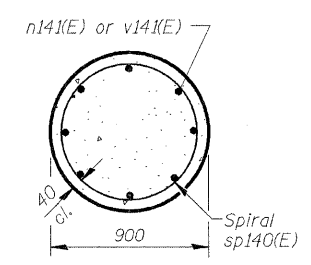


**TOP PLAN**

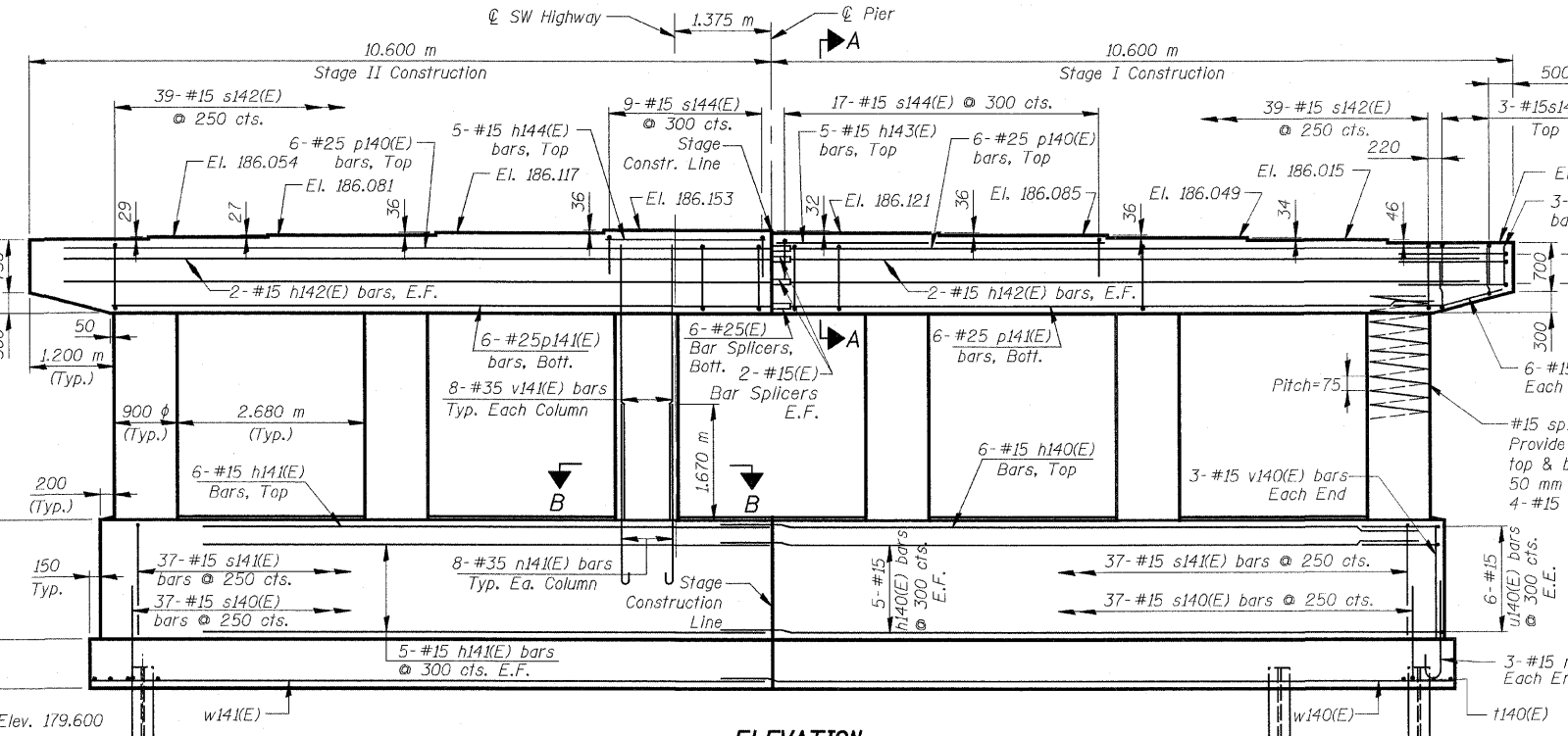
SHEET SA60 of SA110



**SECTION A-A**



**SECTION B-B**



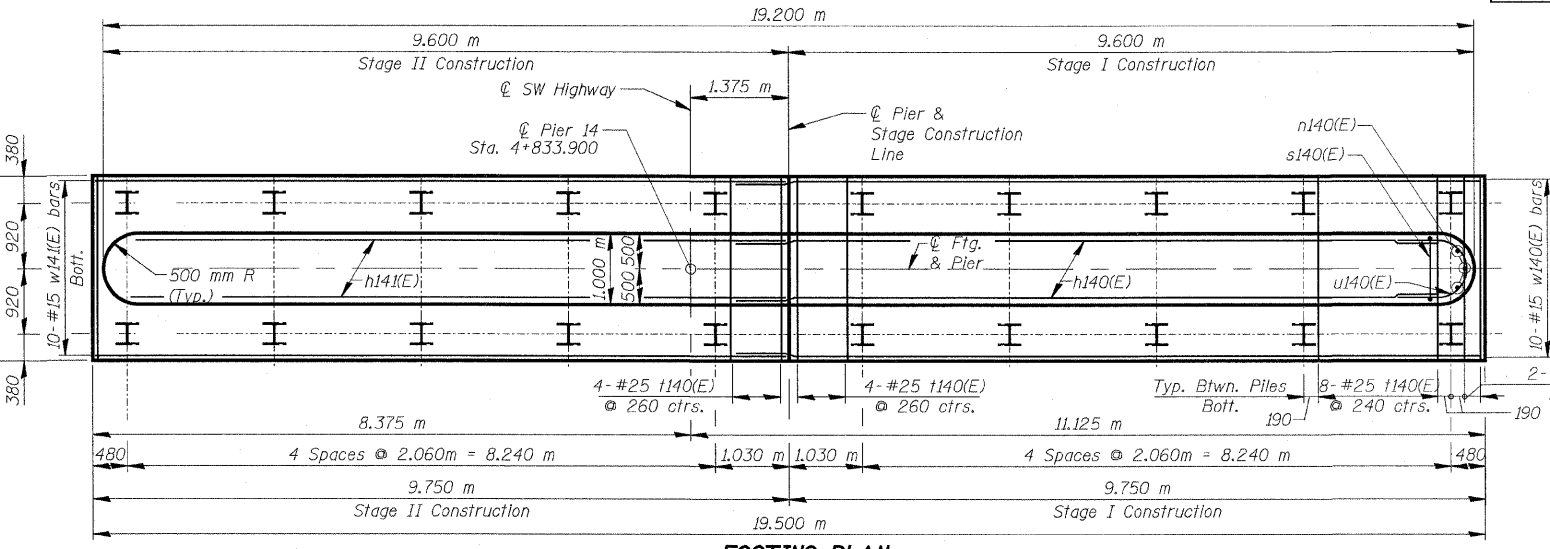
**ELEVATION**  
(Looking Northeast)

**BILL OF MATERIAL**

Bar	No.	Size	Length (m)	Shape
h140(E)	16	#15	10.040	—
h141(E)	16	#15	9.050	—
h142(E)	8	#15	10.050	—
h143(E)	5	#15	4.700	—
h144(E)	5	#15	2.300	—
n140(E)	6	#15	1.480	U
n141(E)	48	#35	3.050	U
p140(E)	12	#25	10.050	—
p141(E)	12	#25	9.400	—
p142(E)	12	#15	1.830	—
s140(E)	74	#15	3.500	□
s141(E)	74	#15	4.200	□
s142(E)	78	#15	3.880	□
s143(E)	12	#15	2.400	□
s144(E)	26	#15	1.800	□
sp140(E)	6	#15	*3.020	~
t140(E)	76	#25	2.500	—
u140(E)	12	#15	3.150	U
u141(E)	6	#20	3.590	U
v140(E)	6	#15	1.650	—
v141(E)	48	#35	3.770	—
v142(E)	6	#15	0.600	—
w140(E)	10	#15	10.390	—
w141(E)	10	#15	9.650	—
Structure Excavation			m <sup>3</sup>	120
Concrete Structures			m <sup>3</sup>	102.3
Reinforcement Bars, Epoxy Coated			kg	8,020
Bar Splicers			Each	16
Furnishing Steel Piles HP310x79			m	280.0
Driving Piles			m	280.0
Pile Shoes			Each	20

\* Height of spiral

**PILE DATA**  
 Type: Steel HP 12x53 with pile shoes  
 Nominal Required Bearing: 1860 kN  
 Allowable Resistance Available: 620 kN  
 Est. Length: 14.0 m  
 No. Production Piles: 20  
 No. Test Piles: None



**FOOTING PLAN**

**A & B DIMENSIONS**

Bar	A	B
s140(E)	900	1,300 m
s141(E)	900	1,650 m
s143(E)	900	750
s144(E)	900	450

**BAR n140(E) or n141(E)**

**BAR p142(E)**

**BARS s140(E), s141(E), s143(E) & s144(E)**

**BAR s142(E)**

**BAR u140(E) & u141(E)**

**REVISIONS**

NAME	DATE

- NOTES:**
1. Reinforcement bars designated (E) shall be Epoxy Coated.
  2. Bars indicated thus 20 x 3 - #15 etc. indicates 20 lines of bars with 3 lengths per line.
  3. All dimensions are in millimeters (mm) except as noted.
  4. Minimum lap for spirals 770 mm.

**ILLINOIS DEPARTMENT OF TRANSPORTATION**  
**PIER 14**  
**SOUTHWEST HIGHWAY OVER B&O RAILROAD AND STONY CREEK**  
 FAU 3578 SECTION 15 VB-1-F  
 STRUCTURE NUMBER 016-2771  
 COOK COUNTY STATION 4+716.497  
 SCALE: NONE DRAWN BY: E. Mroozek  
 DATE: MAY 22, 2009 CHECKED BY: G. Holsted

FOR INFORMATION ONLY

J:\vermillion(Rdwy\_Lise)\5/29/2009\10:54 PM\qa\1dort\9556.ad\drawings\struct\Yfabr\action-plans\60\_FAB\_Pier\_14.dwg  
 PATRICK ENGINEERING INC. LISLE, ILLINOIS