

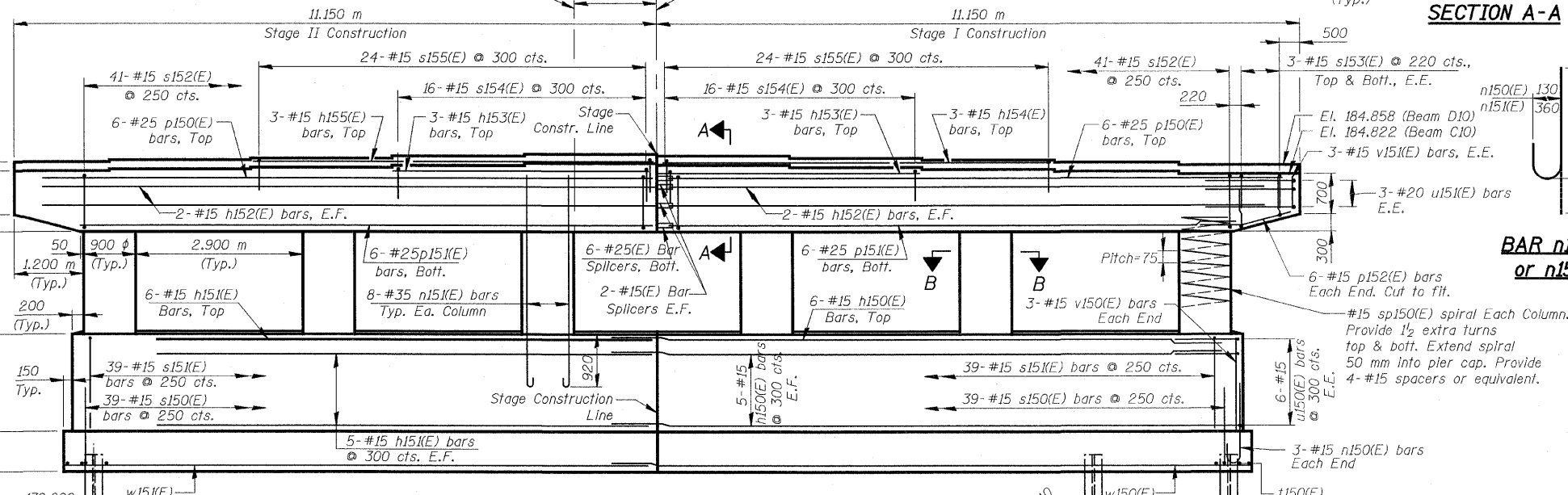
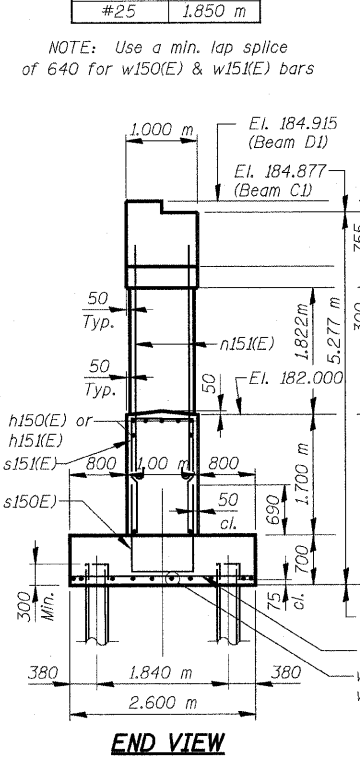
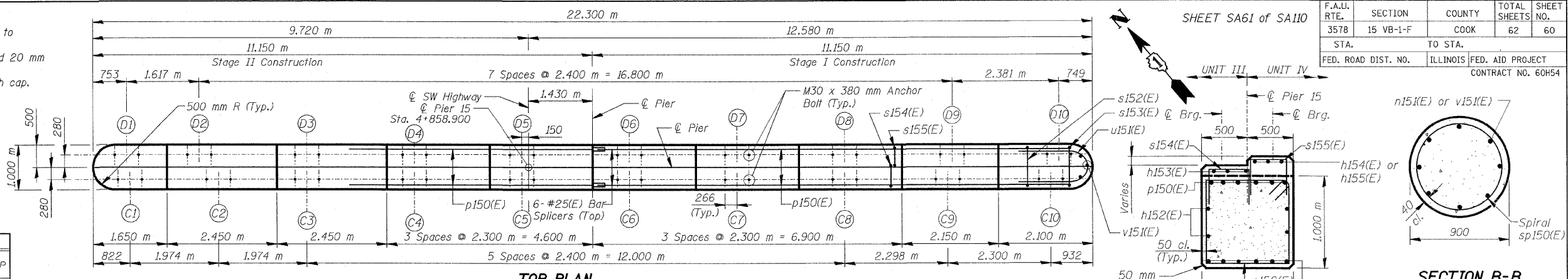
F.A.U. RTE.	SECTION	COUNTY	TOTAL SHEETS	SHEET NO.
3578	15 VB-1-F	COOK	62	60
STA.	TO STA.			
FED. ROAD DIST. NO.	ILLINOIS FED. AID PROJECT		CONTRACT NO. 60H54	

NOTES:

Space Reinforcement in cap to miss anchor bolts.
All edges shall have standard 20 mm chamfer except as noted.
Four steps monolithically with cap.

TYP. LAP SPLICE	
BAR SIZE	MIN. LAP
#15	890 mm
#20	1.110 m
#25	1.850 m

NOTE: Use a min. lap splice of 640 for w150(E) & w151(E) bars



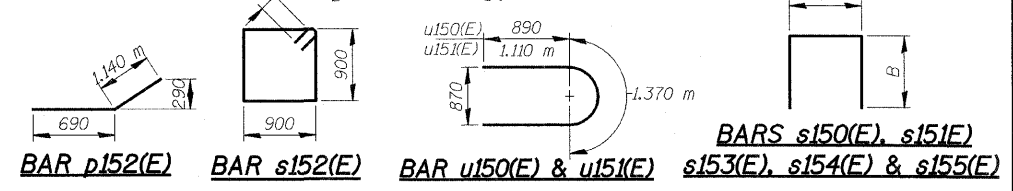
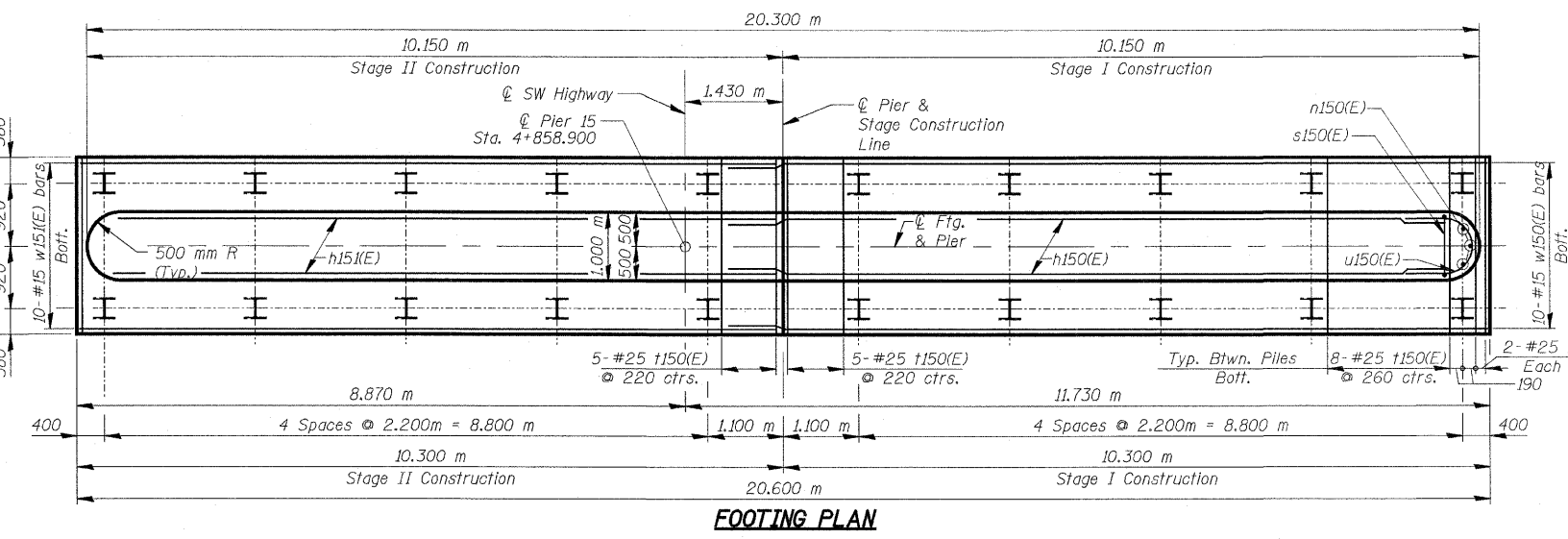
PIER CAP STEPS & ELEVATIONS (Looking Northeast)

Beam	C1	C2	C3	C4	C5	C6	C7	C8	C9	C10
Elevation	184.877	184.908	184.938	184.974	185.010	184.978	184.942	184.906	184.868	184.822
Step	0.031	0.030	0.036	0.036	-0.032	-0.036	-0.036	-0.038	-0.046	
Beam	D1	D2	D3	D4	D5	D6	D7	D8	D9	D10
Elevation	184.915	184.942	184.978	185.014	185.050	185.018	184.982	184.946	184.907	184.858
Step	0.027	0.036	0.036	0.036	-0.032	-0.036	-0.036	-0.039	-0.049	

BILL OF MATERIAL

Bar	No.	Size	Length (m)	Shape
h150(E)	16	# 15	10.590	—
h151(E)	16	# 15	9.600	—
h152(E)	8	# 15	10.600	—
h153(E)	6	# 15	4.500	—
h154(E)	3	# 15	6.800	—
h155(E)	3	# 15	6.950	—
n150(E)	6	# 15	1.480	U
n151(E)	48	# 35	4.000	U
p150(E)	12	# 25	10.600	—
p151(E)	12	# 25	9.950	—
p152(E)	12	# 15	1.830	—
s150(E)	78	# 15	3.500	□
s151(E)	78	# 15	4.200	□
s152(E)	82	# 15	3.880	□
s153(E)	12	# 15	2.400	□
s154(E)	32	# 15	1.400	□
s155(E)	48	# 15	1.300	□
sp150(E)	6	# 15	1.870	W
t150(E)	78	# 25	2.500	—
u150(E)	12	# 15	3.150	U
u151(E)	6	# 20	3.590	U
v150(E)	6	# 15	1.650	—
v151(E)	6	# 15	0.600	—
w150(E)	10	# 15	10.940	—
w151(E)	10	# 15	10.200	—
Structure Excavation			m ³	127
Concrete Structures			m ³	103.4
Reinforcement Bars, Epoxy Coated			kg	6,900
Bar Splacers			Each	16
Furnishing Steel Piles HP310x79			m	200.0
Driving Piles			m	200.0
Pile Shoes			Each	20
Concrete Sealer			m ²	23

PILE DATA
Type: Steel HP 12x53 with pile shoes
Nominal Required Bearing: 1860 kN
Allowable Resistance Available: 620 kN
Est. Length: 10.0 m
No. Production Piles: 20
No. Test Piles: None



A & B DIMENSIONS

Bar	A	B
s150(E)	900	1.300 m
s151(E)	900	1.650 m
s153(E)	900	750
s154(E)	500	450
s155(E)	400	450

- NOTES:**
- Reinforcement bars designated (E) shall be Epoxy Coated.
 - Bars indicated thus 20 x 3 - #15 etc. indicates 20 lines of bars with 3 lengths per line.
 - All dimensions are in millimeters (mm) except as noted.
 - Minimum lap for spirals 770 mm.

REVISIONS

NAME	DATE

ILLINOIS DEPARTMENT OF TRANSPORTATION
PIER 15
SOUTHWEST HIGHWAY OVER
B&O RAILROAD AND STONY CREEK
FAU 3578 SECTION 15 VB-1-F
STRUCTURE NUMBER 016-2171
COOK COUNTY STATION 4+716.497
SCALE: NONE DRAWN BY: E. Mroozek
DATE: MAY 22, 2009 CHECKED BY:

5/29/2009 11:01 PM
 J:\vermillion\rdwy_1\isle\529\2009\drawings\struct\Fabrication\plans\15\FAB_Pier_15.dwg
 q:\vdof\9556_a0\drawings\struct\Fabrication\plans\15\FAB_Pier_15.dwg



FOR INFORMATION ONLY