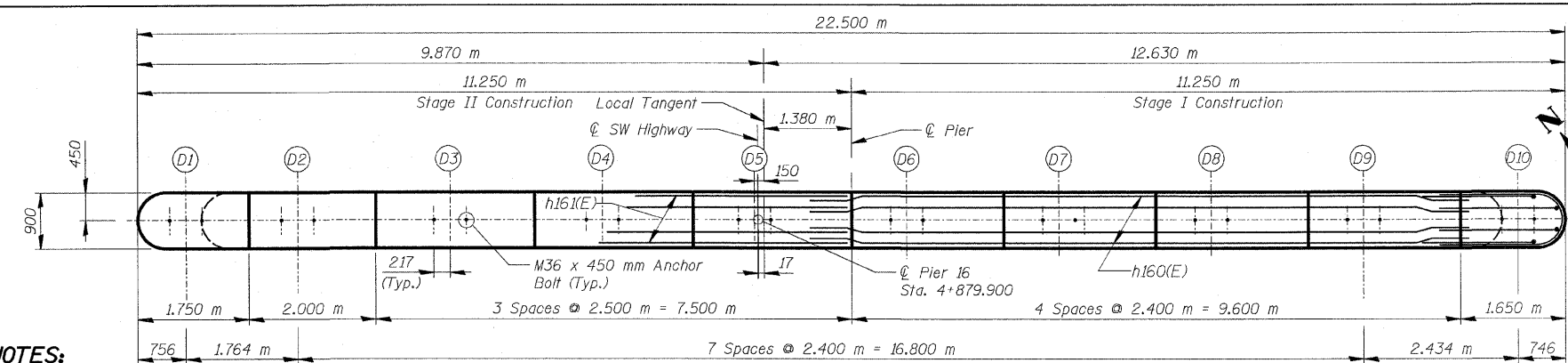


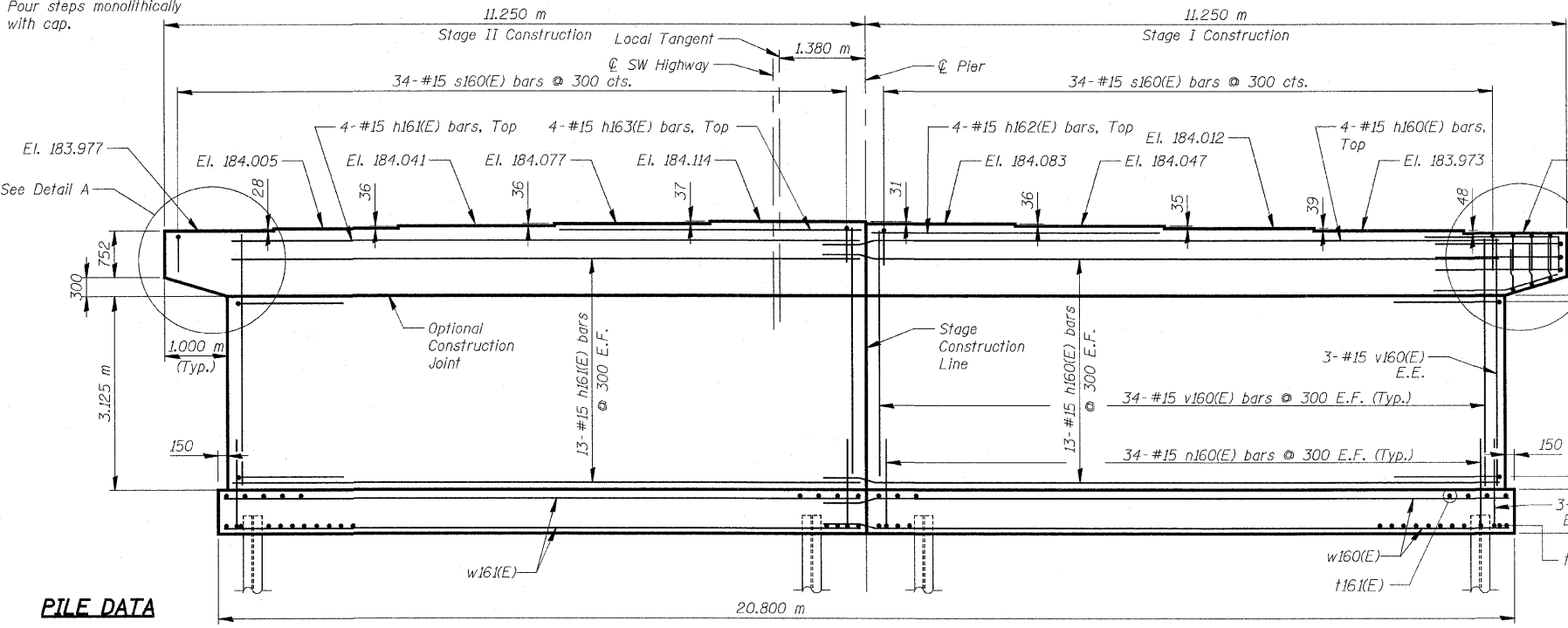
F.A.U. RTE.	SECTION	COUNTY	TOTAL SHEETS	SHEET NO.
3578	15 VB-1-F	COOK	62	61
STA.		TO STA.		
FED. ROAD DIST. NO.		ILLINOIS FED. AID PROJECT		
		CONTRACT NO. 68888		



TOP PLAN

NOTES:

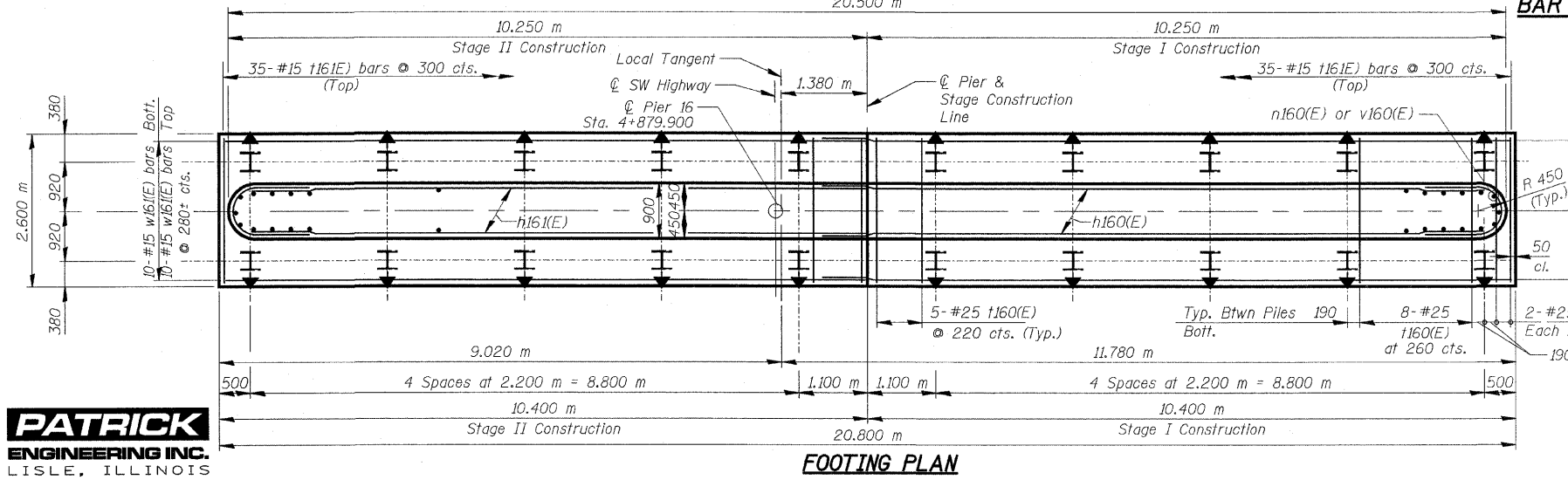
Space Reinforcement in cap to miss anchor bolts.
All edges shall have standard 20mm chamfer except as noted.
Pour steps monolithically with cap.



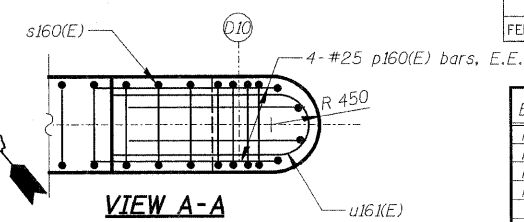
ELEVATION
(Looking Northeast)

PILE DATA

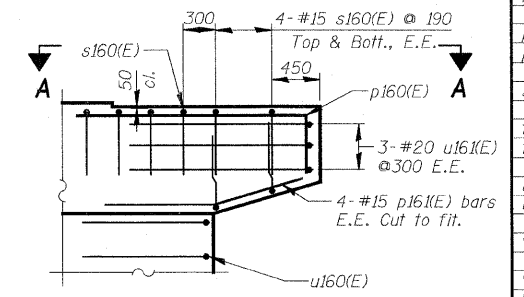
Type: Steel HP 12x53 with pile shoes
Nominal Required Bearing: 1860 kN
Allowable Resistance Available: 620 kN
Est. Length: 14.7 m
No. Production Piles: 19
No. Test Piles: 1



FOOTING PLAN

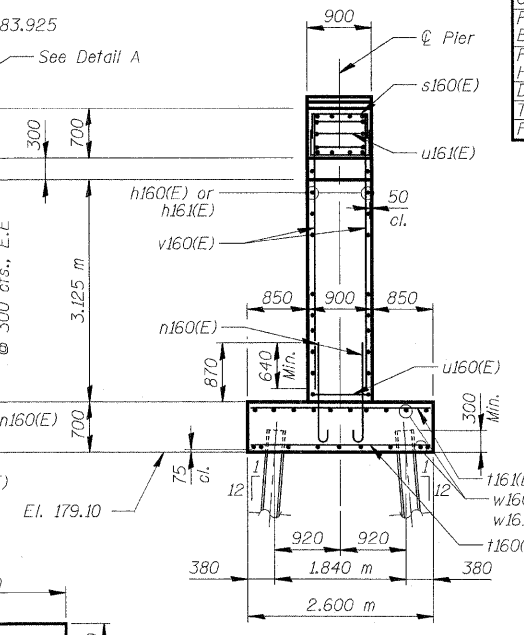


VIEW A-A



DETAIL A

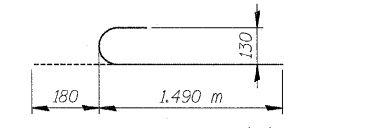
v160(E), h160(E) & h161(E) not shown for clarity



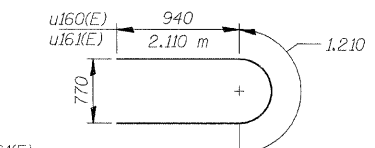
SIDE VIEW

BILL OF MATERIAL

Bar	No.	Size	Length (m)	Shape
h160(E)	30	# 15	10.740	—
h161(E)	30	# 15	9.750	—
h162(E)	4	# 15	4.700	—
h163(E)	4	# 15	4.900	—
n160(E)	142	# 15	1.670	—
p160(E)	8	# 25	3.460	—
p161(E)	8	# 15	1.690	—
s160(E)	84	# 15	2.080	—
t160(E)	78	# 25	2.500	—
t161(E)	70	# 15	2.500	—
u160(E)	22	# 15	3.090	—
u161(E)	6	# 20	5.430	—
v160(E)	142	# 15	4.030	—
w160(E)	20	# 15	11.290	—
w161(E)	20	# 15	10.300	—
Structure Excavation		m ²	150	
Concrete Structures		m ²	117.5	
Reinforcement Bars, Epoxy Coated		kg	4,600	
Furnishing Steel Piles HP310x79		m	279.3	
Driving Piles		m	279.3	
Test Pile Steel HP310x79		Each	1	
Pile Shoes		Each	20	



BAR n160(E)



BAR u160(E) & u161(E)

TYP. LAP SPLICE	
BAR SIZE	MIN. LAP
#15	890 mm
#20	1.110 m
#25	1.850 m

BAR p160(E)

BAR p161(E)

BAR s160(E)

NOTES:

1. Reinforcement bars designated (E) shall be Epoxy Coated.
2. Bars Indicated thus 20 x 3 -#15 etc. indicates 20 lines of bars with 3 lengths per line.
3. All dimensions are in millimeters (mm) except as noted.

REVISIONS	
NAME	DATE

ILLINOIS DEPARTMENT OF TRANSPORTATION
PIER 16
SOUTHWEST HIGHWAY OVER
B&O RAILROAD AND STONY CREEK
FAU 3578 SECTION 15 VB-1-F
STRUCTURE NUMBER 016-2771
COOK COUNTY STATION 4+716.497
SCALE: NONE DRAWN BY: E. Mroozek
DATE: MAY 22, 2009 CHECKED BY: G. Hottelsted

LEGEND:

E.E. Each End
E.F. Each Face

FOR INFORMATION ONLY

J:\vermillion(Rdwy.L16) 5/29/2009 11:10 PM
 c:\dot\9556_c0\drawings\structure\fabrication\plans\62.FAB.Pier_16.dgn

