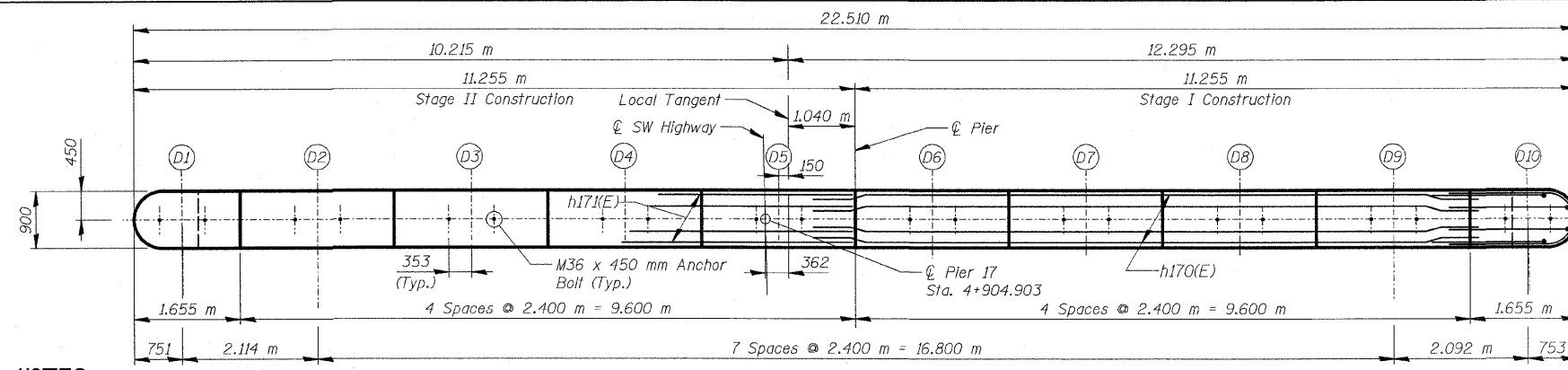
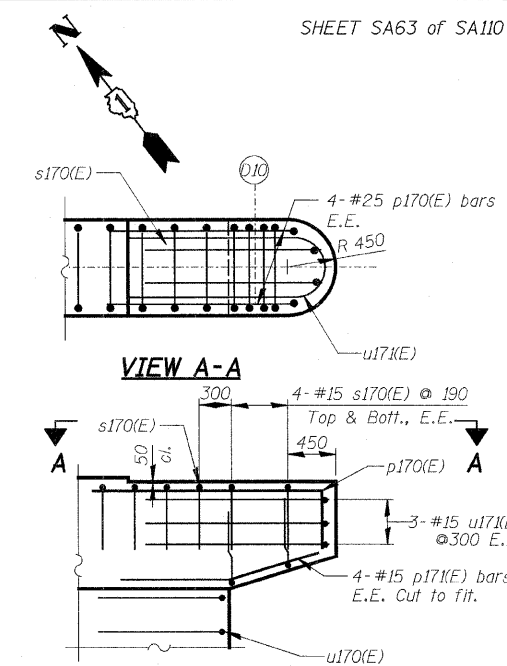


F.A.U. RTE.	SECTION	COUNTY	TOTAL SHEETS	SHEET NO.
3578	15 VB-1-F	COOK	62	62
STA.	TO STA.			
FED. ROAD DIST. NO.	ILLINOIS	FED. AID PROJECT		
CONTRACT NO. 60H54				



NOTES:
 Space Reinforcement in cap to miss anchor bolts.
 All edges shall have standard 20mm chamfer except as noted.
 Four steps monolithically with cap.

TOP PLAN

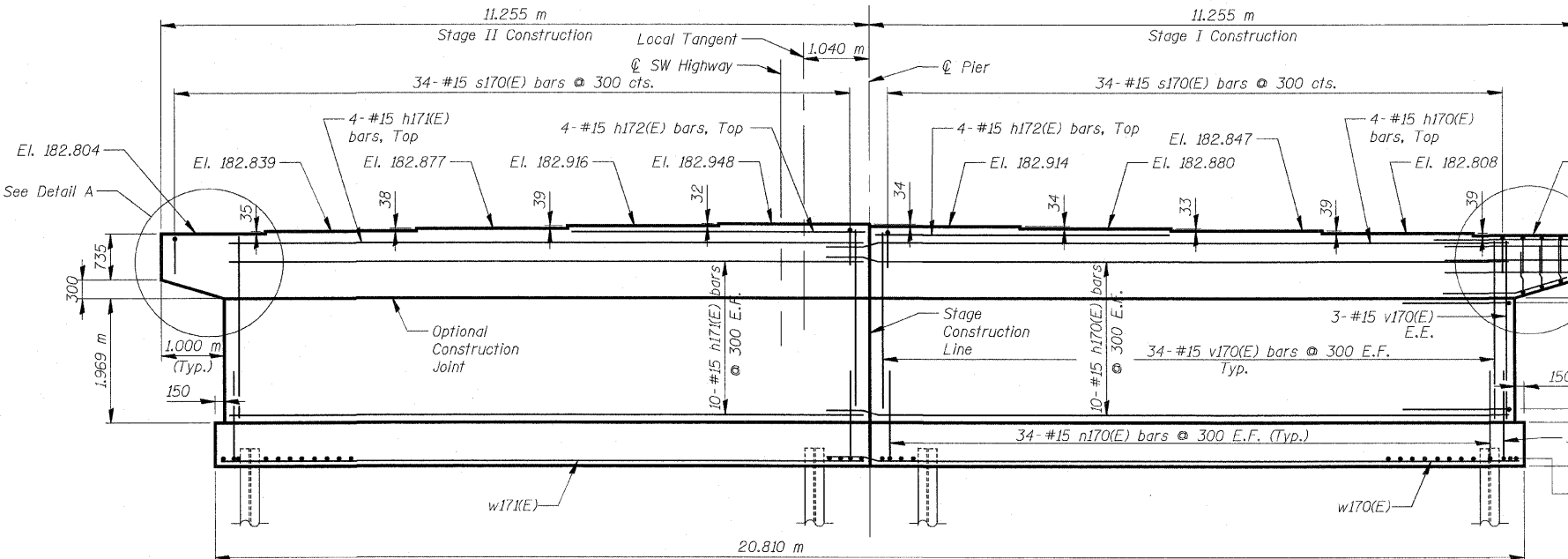


VIEW A-A

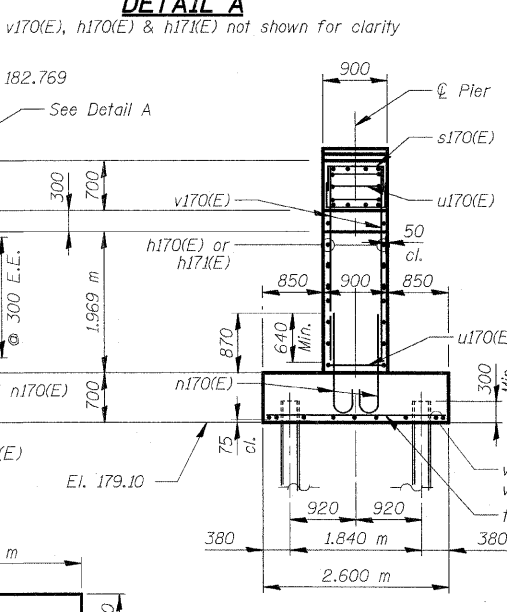
DETAIL A

BILL OF MATERIAL

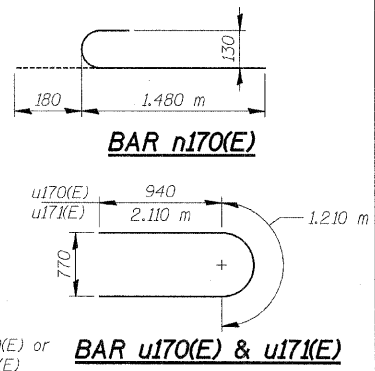
Bar	No.	Size	Length (m)	Shape
h170(E)	24	# 15	10.750	—
h17(E)	24	# 15	9.760	—
h172(E)	8	# 15	4.700	—
n170(E)	142	# 15	1.660	—
p170(E)	8	# 25	3.460	—
p17(E)	8	# 15	1.690	—
s170(E)	84	# 15	2.080	—
1170(E)	78	# 25	2.500	—
u170(E)	16	# 15	3.090	—
u17(E)	6	# 20	5.430	—
v170(E)	142	# 15	2.870	—
w170(E)	10	# 15	11.050	—
w17(E)	10	# 15	10.310	—
Structure Excavation			m ³	149
Concrete Structures			m ³	96.1
Reinforcement Bars, Epoxy Coated			kg	3,500
Furnishing Steel Piles HP310x79			m	280.0
Driving Piles			m	280.0
Pile Shoes			Each	20



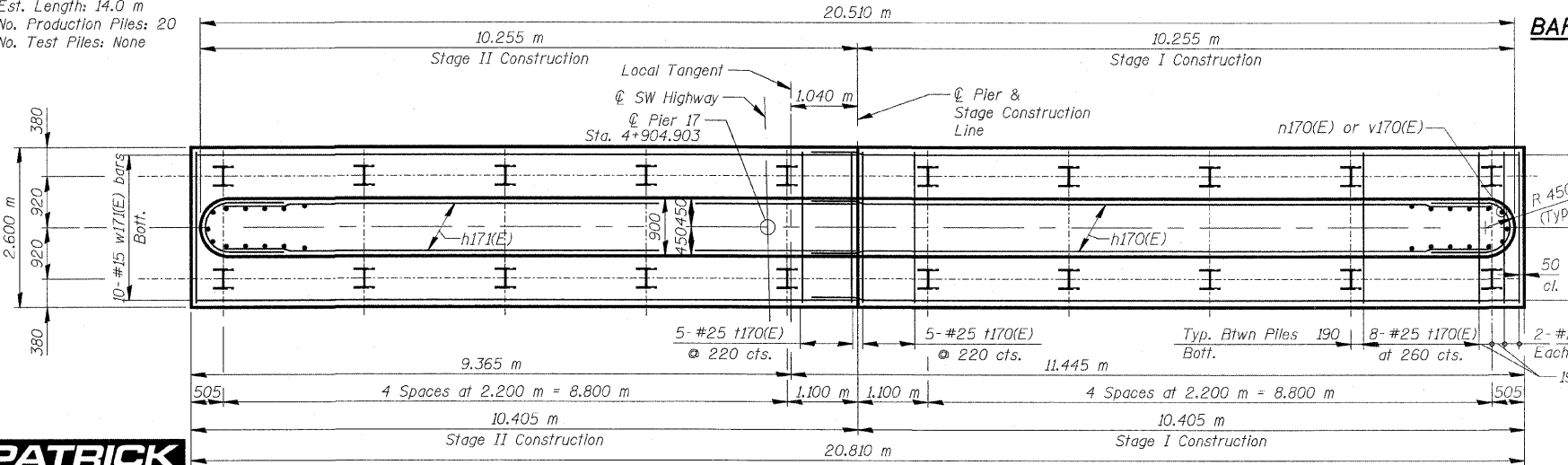
ELEVATION
Looking Northeast



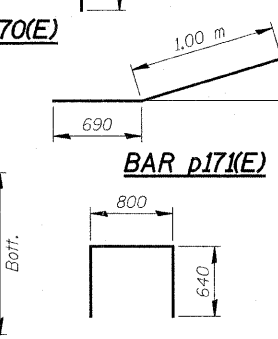
SIDE VIEW



PILE DATA
 Type: Steel HP 12x53 with pile shoes
 Nominal Required Bearing: 1860 kN
 Allowable Resistance Available: 620 kN
 Est. Length: 14.0 m
 No. Production Piles: 20
 No. Test Piles: None



FOOTING PLAN



LEGEND:
 E.E. Each End
 E.F. Each Face

NOTES:
 1. Reinforcement bars designated (E) shall be Epoxy Coated.
 2. Bars indicated thus 20 x 3 - #15 etc. indicates 20 lines of bars with 3 lengths per line.
 3. All dimensions are in millimeters (mm) except as noted.

REVISIONS		ILLINOIS DEPARTMENT OF TRANSPORTATION
NAME	DATE	
		PIER 17 SOUTHWEST HIGHWAY OVER B&O RAILROAD AND STONY CREEK FAU 3578 SECTION 15 VB-1-F STRUCTURE NUMBER 016-2771 COOK COUNTY STATION 4+716.497 SCALE: NONE DRAWN BY: E. Mroozek DATE: MAY 22, 2009 CHECKED BY: G. Hatlostad

FOR INFORMATION ONLY

J:\vermillion\rdwy_1\isle\5229\2009\5229\Drawings\structure\fabrication\plans\63_FAB_Pier_17.dgn
 5/29/2009 11:16 PM
PATRICK ENGINEERING INC.
 LISLE, ILLINOIS