

STATE OF ILLINOIS
DEPARTMENT OF TRANSPORTATION
DIVISION OF HIGHWAYS

**PROPOSED
HIGHWAY PLANS**

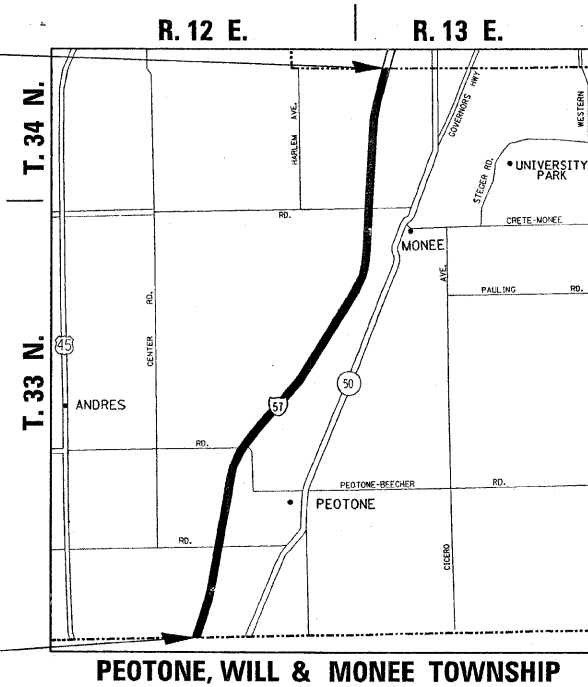
FAI 57/I-57
KANKAKEE COUNTY LINE TO COOK COUNTY LINE
SECTION: 2009-065 I
SEAL COAT
WILL COUNTY
C-91-753-09

FOR INDEX OF SHEETS, SEE SHEET NO. 2

IMPROVEMENT LOCATED IN THE VILLAGES
OF PEOTONE, MONEE AND UNIVERSITY PARK

IMPROVEMENT ENDS
STA. 792 + 61

IMPROVEMENT BEGINS
STA. 103 + 00

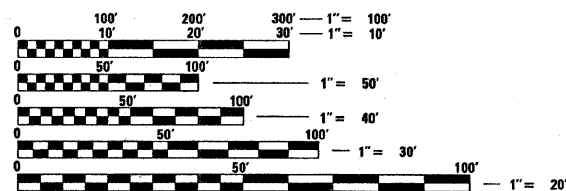


TRAFFIC DATA:

2007 ADT - 42200 TO 68600
SPEED LIMIT - 55 MPH

OMISSIONS:

INSIDE & OUTSIDE SHOULDERS (NB & SB)
STA. 225 + 10 TO 229 + 35



FULL SIZE PLANS HAVE BEEN PREPARED USING STANDARD
ENGINEERING SCALES. REDUCED SIZED PLANS WILL NOT
CONFORM TO STANDARD SCALES. IN MAKING MEASUREMENTS
ON REDUCED PLANS, THE ABOVE SCALES MAY BE USED.

J.U.L.I.E.
JOINT UTILITY LOCATION INFORMATION FOR EXCAVATION
1-800-892-0123
OR 811

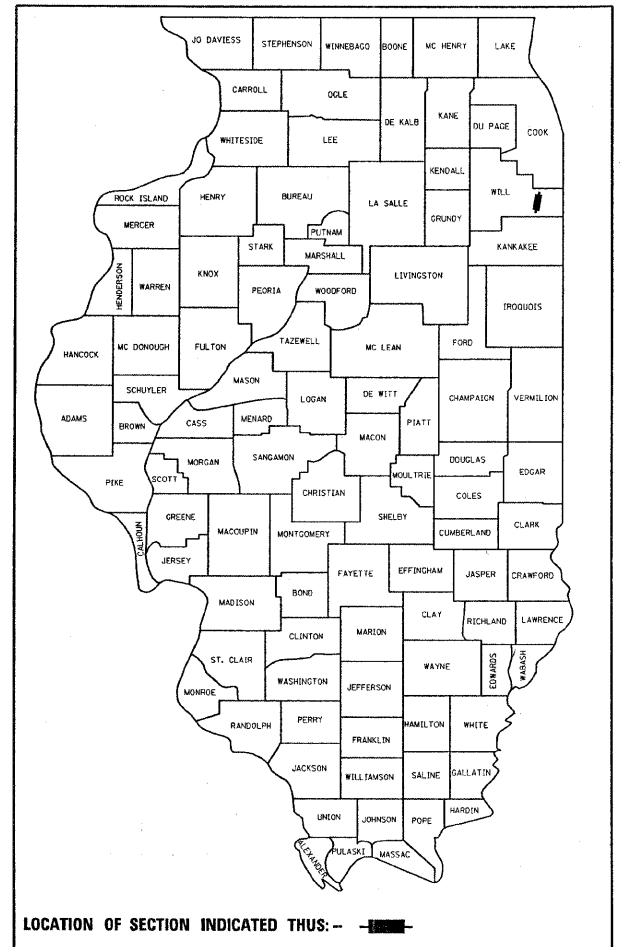
PROJECT ENGINEER: JENPAI CHANG (847) 705-4432
PROJECT MANAGER: KEN ENG (847) 705-4247

CONTRACT NO. 60H55

GROSS LENGTH OF IMPROVEMENT = 68961 LIN FT = 13.06 MILES
NET LENGTH OF IMPROVEMENT = 68536 LIN FT = 12.98 MILES

F.A. RTE.	SECTION	COUNTY	TOTAL SHEETS	SHEET NO.
57	2009-065 I	WILL	36	1
		ILLINOIS	CONTRACT NO. 60H55	

D-91-753-09



LOCATION OF SECTION INDICATED THIS: - [Symbol] -

STATE OF ILLINOIS
DEPARTMENT OF TRANSPORTATION
DIVISION OF HIGHWAYS

SUBMITTED MAY 21, 2009

Devin M. O'Keefe
DEPUTY DIRECTOR OF HIGHWAYS, REGION ENGINEER

June 26, 2009
Charles G. Ingersoll
ENGINEER OF DESIGN AND ENVIRONMENT

June 26, 2009
Christine M. Reed
DIRECTOR OF HIGHWAYS, CHIEF ENGINEER

**PRINTED BY THE AUTHORITY
OF THE STATE OF ILLINOIS**