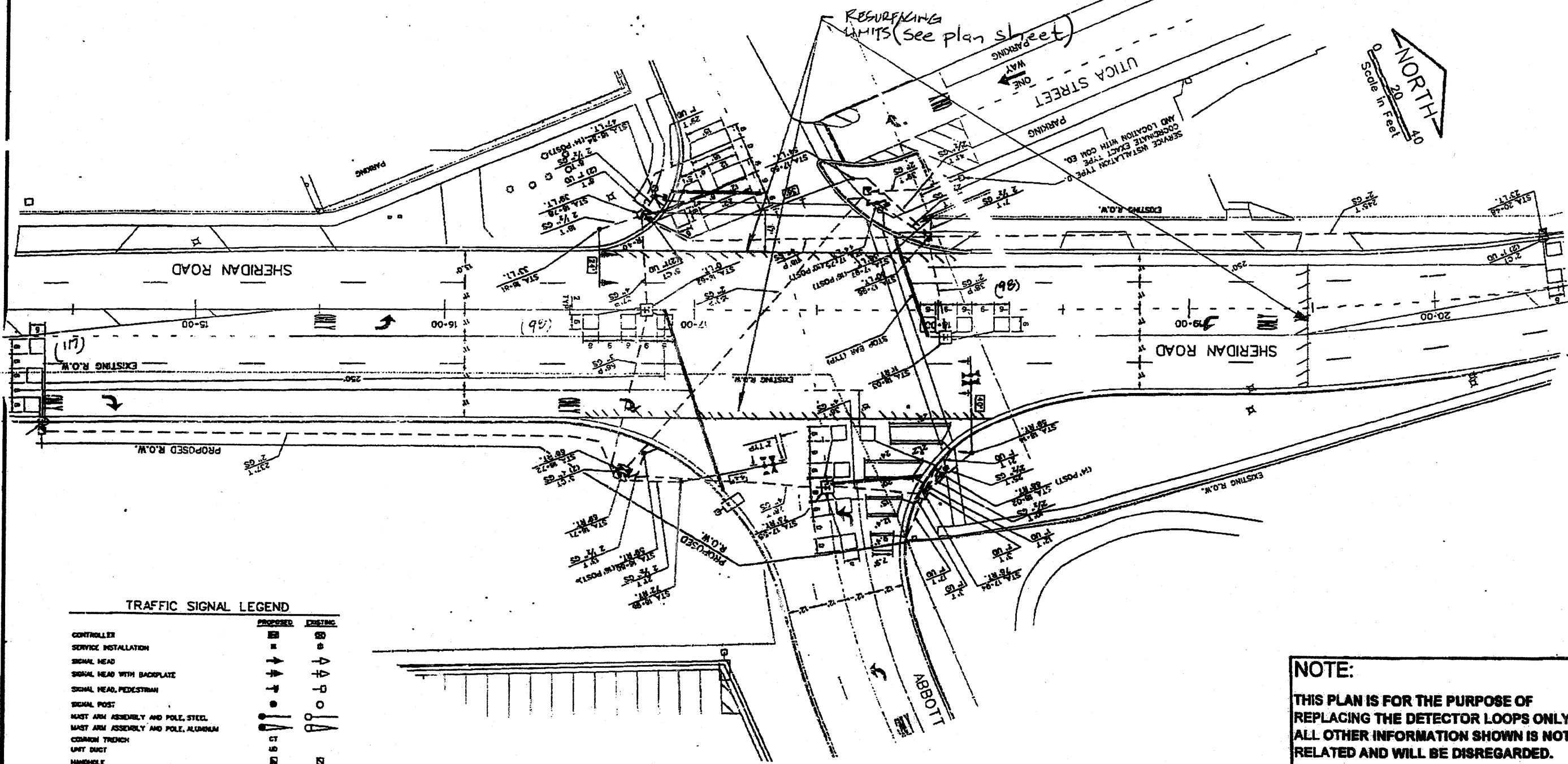


SECTION	COUNTY	TOTAL SHEETS	SHEET NO.
352	LAKE	7	6
STA		TO STA	
PED. ROAD DIST NO. 7		ILLINOIS	PED. AND PROJECT

CONTRACT NO. 60F43



**TRAFFIC SIGNAL LEGEND**

	PROPOSED	EXISTING
CONTROLLER	⊠	⊠
SERVICE INSTALLATION	⊠	⊠
SIGNAL HEAD	⬆	⬆
SIGNAL HEAD WITH BACKPLATE	⬆	⬆
SIGNAL HEAD, PEDESTRIAN	⬆	⬆
SIGNAL POST	⌋	⌋
MAST ARM ASSEMBLY AND POLE, STEEL	⌋	⌋
MAST ARM ASSEMBLY AND POLE, ALUMINUM	⌋	⌋
COMMON TRENCH	⌋	⌋
UNIT DUCT	⌋	⌋
HANDHOLE	⌋	⌋
HEAVY DUTY HANDHOLE	⌋	⌋
DOUBLE HANDHOLE	⌋	⌋
U.S. CONDUIT IN TRENCH OR PUSHED	⌋	⌋
PEDESTRIAN PUSHBUTTON DETECTOR	⊠	⊠
DETECTOR LOOP	⊠	⊠

**NOTE:**  
 THIS PLAN IS FOR THE PURPOSE OF REPLACING THE DETECTOR LOOPS ONLY. ALL OTHER INFORMATION SHOWN IS NOT RELATED AND WILL BE DISREGARDED.

**REPLACE ALL DETECTOR LOOPS AS SHOWN**  
 (WITHIN THE RESURFACING LIMITS)

CODE NO.	QUANTITY	UNIT	ITEM
80600600	100	Foot	Detector Loop Replacement

REVISIONS	
NAME	DATE

ILLINOIS DEPARTMENT OF TRANSPORTATION  
**DETECTOR LOOP REPLACEMENT**  
 ILL. 137 (SHERIDAN) @ 10TH STREET  
 SCALE: NONE  
 DATE: Nov. 2008  
 DRAWN BY: JHE  
 DESIGNED BY: JHE  
 CHECKED BY: DAB