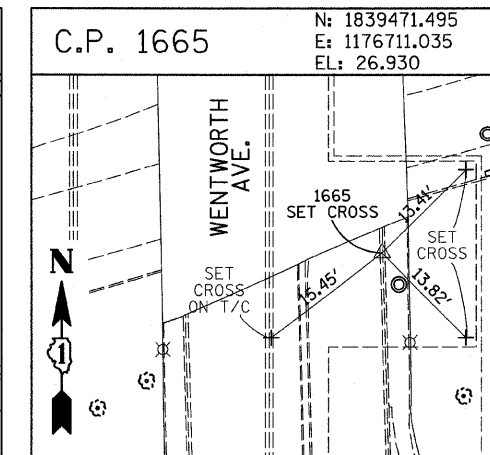
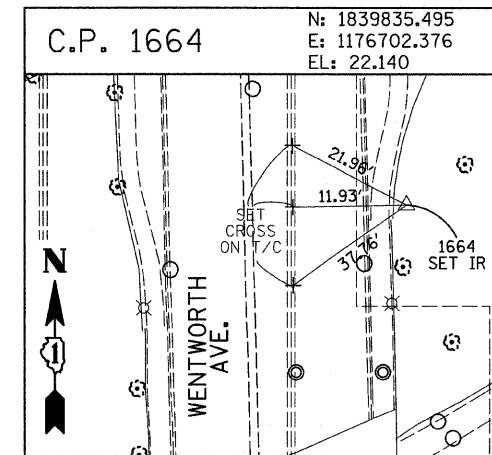
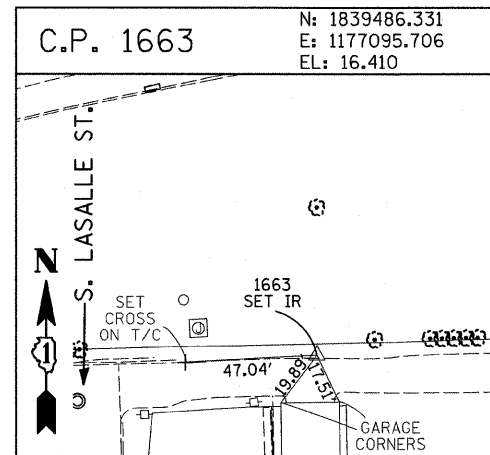
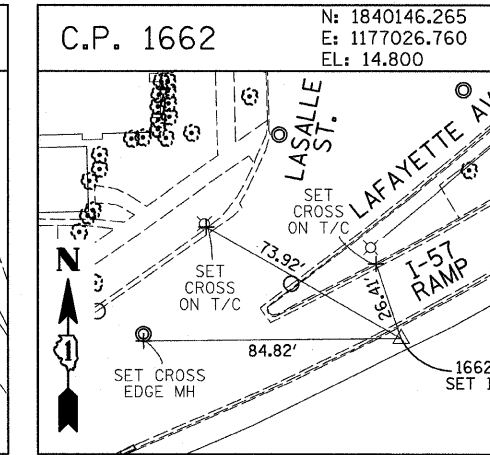
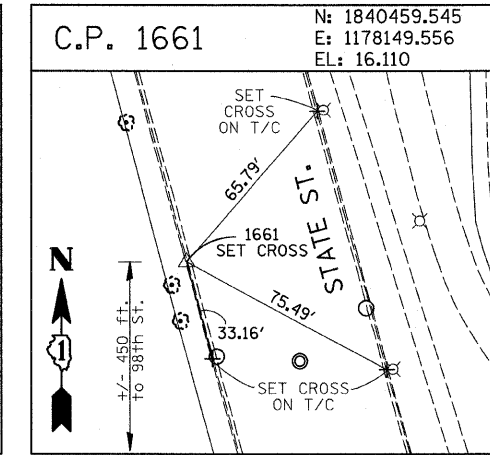
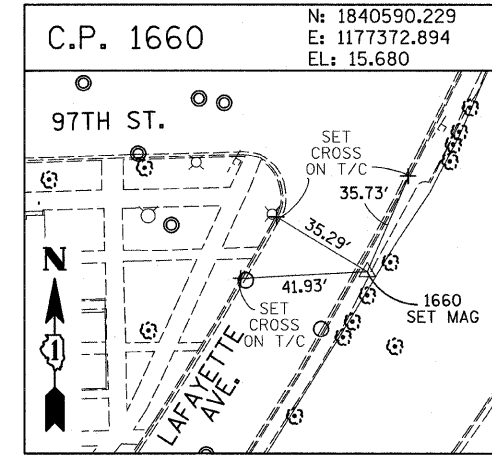
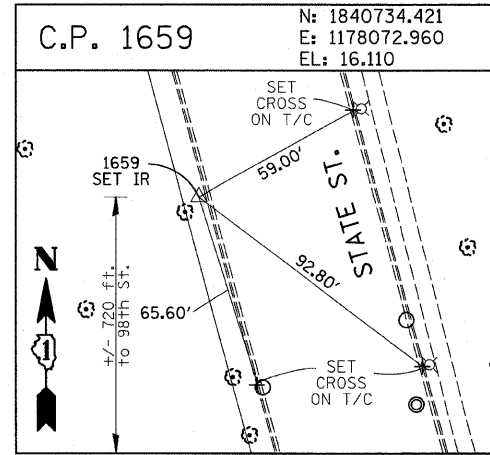
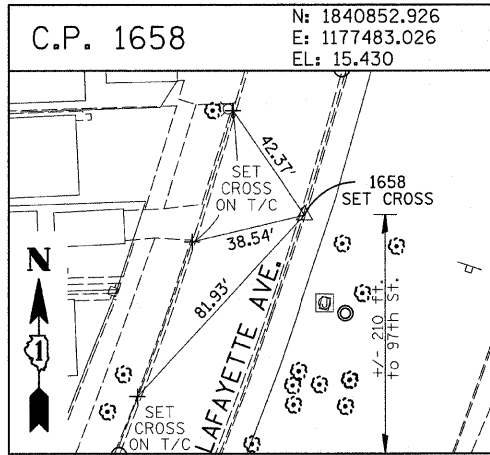
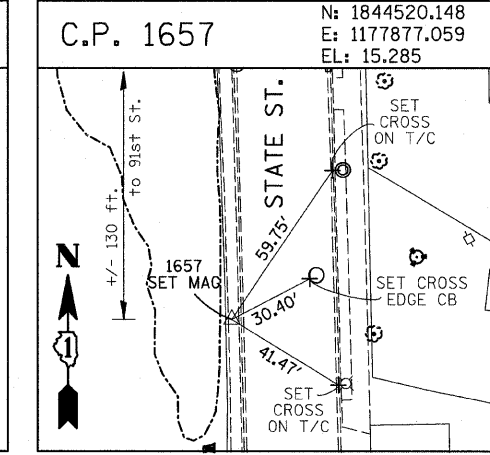
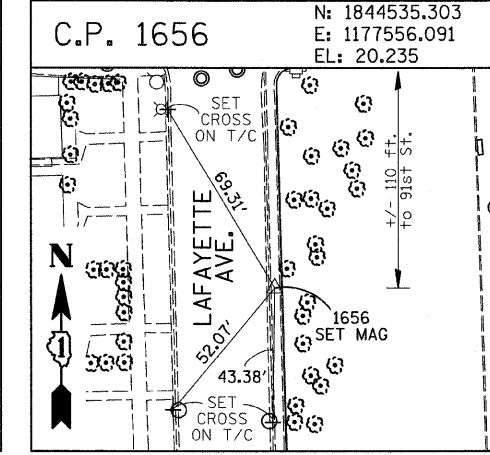
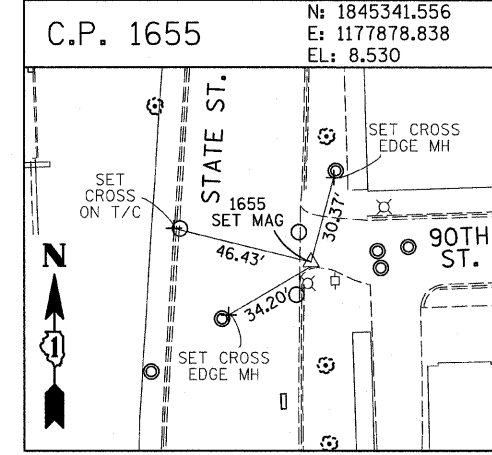
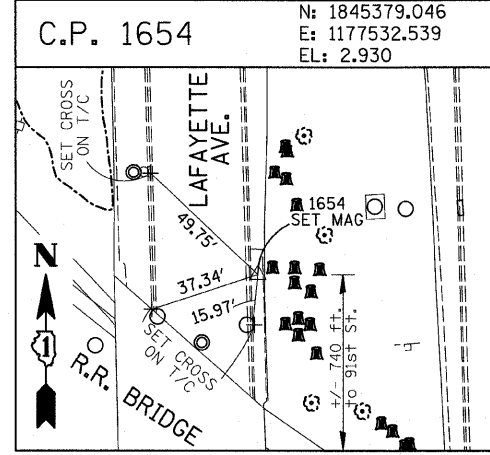
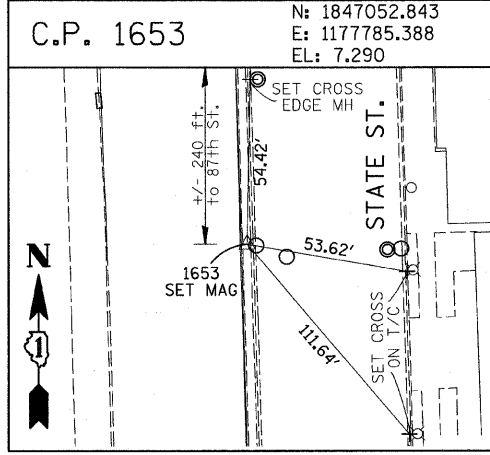
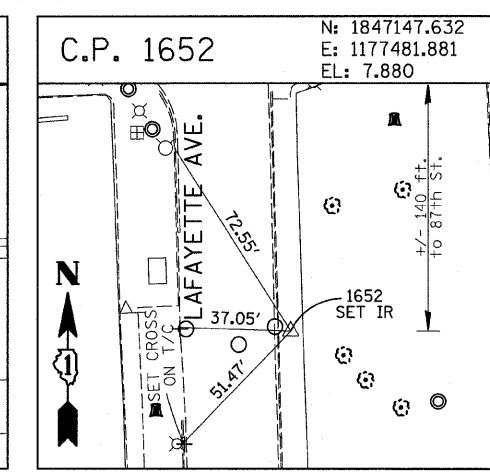
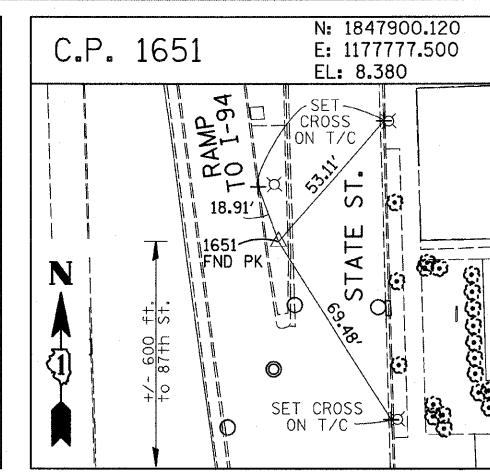
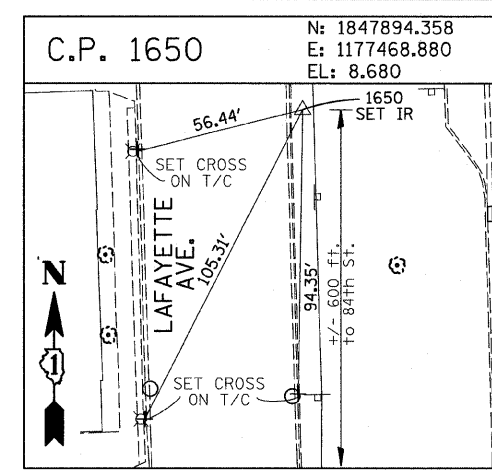
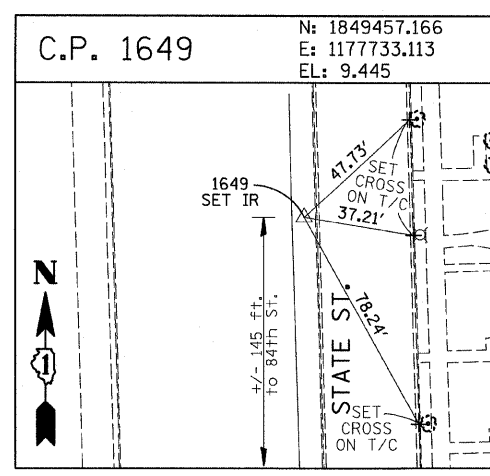
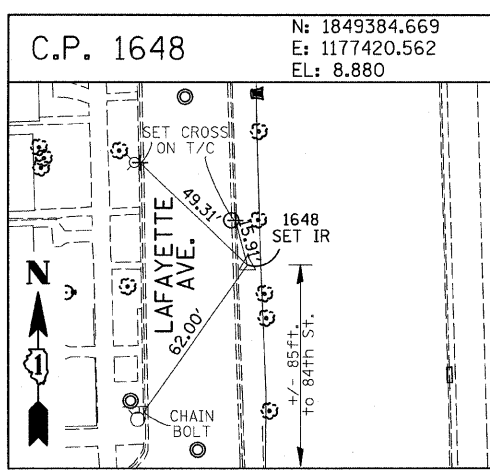


F.A.I. RTE.	SECTION	COUNTY	TOTAL SHEETS	SHEET NO.
94	1516.1 I-7	COOK	58	14
STA. 2212+06.20		TO STA. 2243+03.23		
FED. ROAD DIST. NO.		ILLINOIS FED. AID PROJECT		
62971				



American Surveying Consultants, P.C.
 1837 First St., Chicago, IL 60611 606 N. Northwold St., Chicago, IL 60611

REVISIONS	
NAME	DATE

ILLINOIS DEPARTMENT OF TRANSPORTATION
 F.A.I. 94 (DAN RYAN EXPRESSWAY)
 SURVEY TIES FOR CONTROL POINTS
 SHEET 4 OF 7
 SCALE: 1"=30'
 DATE: OCTOBER 17, 2008
 DRAWN BY: GSP
 CHECKED BY: MMW

10/17/2008 10:17:50 AM