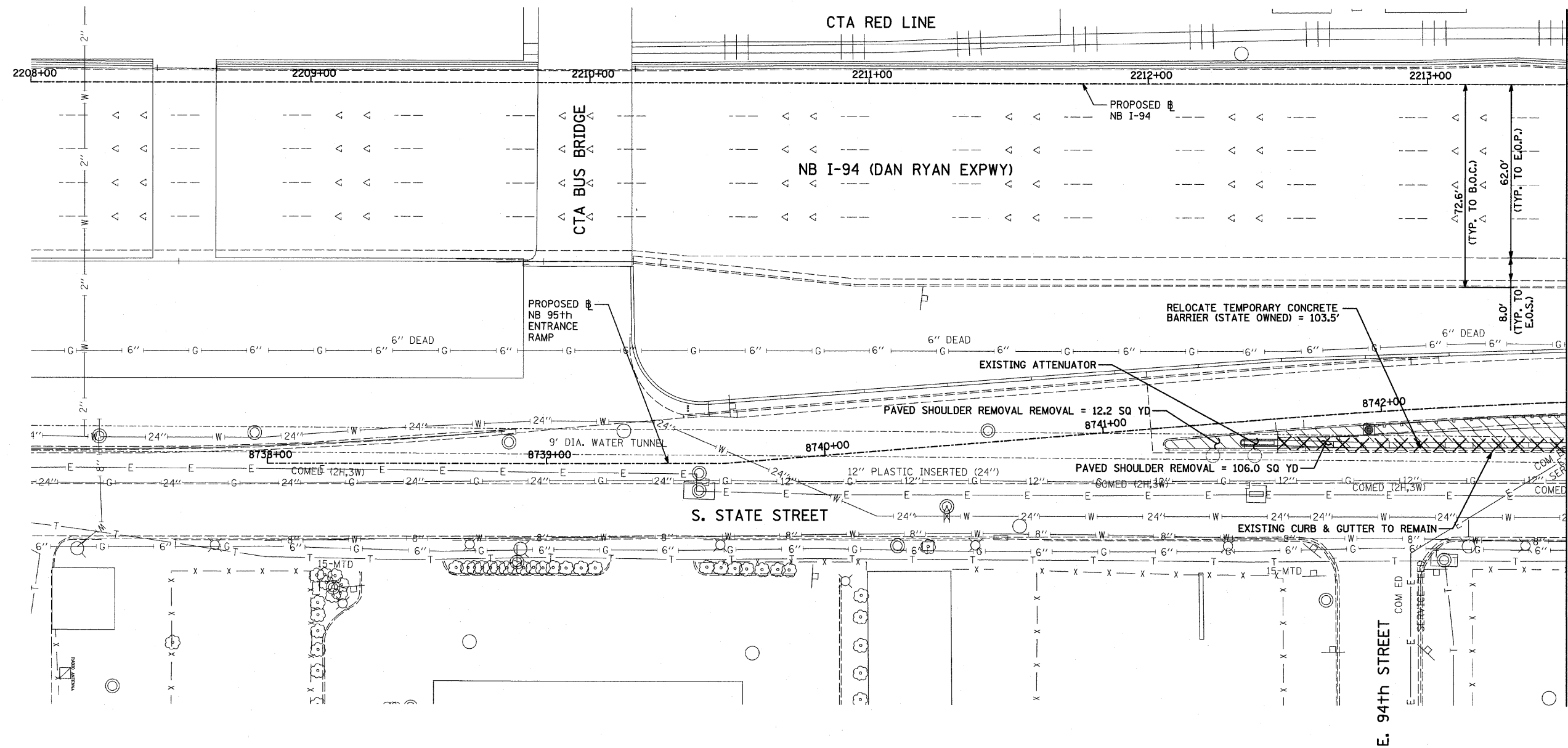
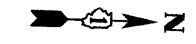
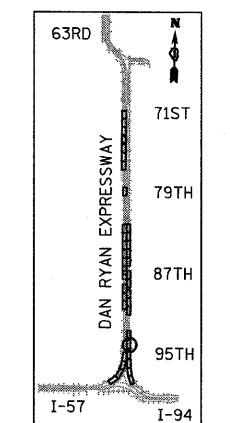


F.A.I. RTE.	SECTION	COUNTY	TOTAL SHEETS	SHEET NO.
94	1516.1 I-7	COOK	58	18
STA. 2212+06.20		TO STA. 2243+03.23		
FED. ROAD DIST. NO.	ILLINOIS	FED. AID PROJECT		

62971



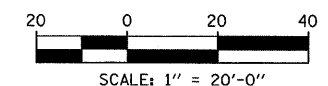
MATCHLINE NB STA. 2213+50



LOCATION MAP

- LEGEND:**
- PAVED SHOULDER REMOVAL
  - COMB CONC CURB & GUTTER REMOVAL
  - CHAIN LINK FENCE REMOVAL
  - CONCRETE BARRIER/GUARDRAIL REMOVAL
  - TREE REMOVAL (UNITS) (NO UNIT SHOWN = <6)

**NOTE:**  
 SIGNS SHALL BE RELOCATED AT A MINIMUM OF 3 FEET FROM THE FRONT FACE OF THE PROPOSED KNEE WALL OR MOUNTED TO THE FRONT FACE OF THE RECONSTRUCTED PARAPET. EXACT PLACEMENT SHALL BE DETERMINED BY THE ENGINEER. PAID FOR AS "RELOCATED EXISTING SIGN PANEL, SPECIAL".



REVISIONS	
NAME	DATE

ILLINOIS DEPARTMENT OF TRANSPORTATION  
 F.A.I. 94 (DAN RYAN EXPRESSWAY)  
**REMOVAL PLAN**  
 NB I-94 (DAN RYAN EXPRESSWAY)  
 STA. 2208+00 TO 2213+50  
 SCALE: 1"=20'  
 DATE: OCTOBER 17, 2008  
 DRAWN BY: AMB, MAF, TB  
 CHECKED BY: TGB, MI

**TYLIN** INTERNATIONAL

P:\02373\road\225\p25\581013.dwg 10/17/2008 10:15:01 AM