

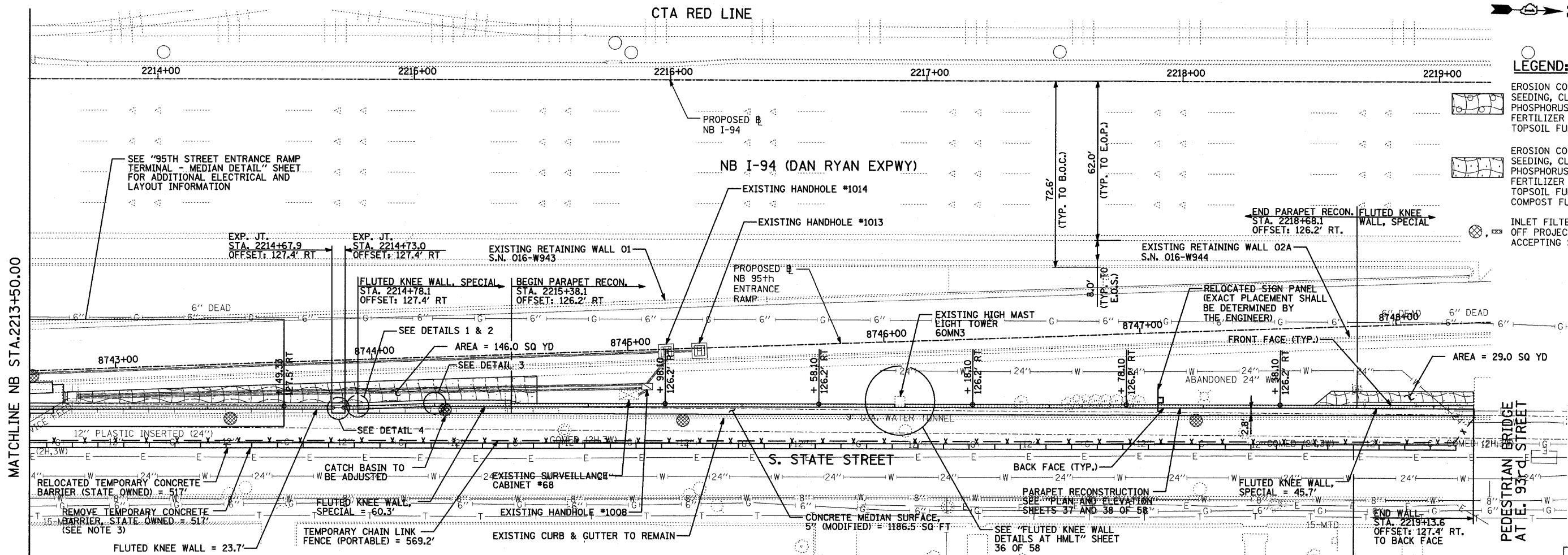
F.A.I. RTE.	SECTION	COUNTY	TOTAL SHEETS	SHEET NO.
94	1516.1 I-7	COOK	58	21
STA. 2212+06.20		TO STA. 2243+03.23		
FED. ROAD DIST. NO.		ILLINOIS FED. AID PROJECT		

62971



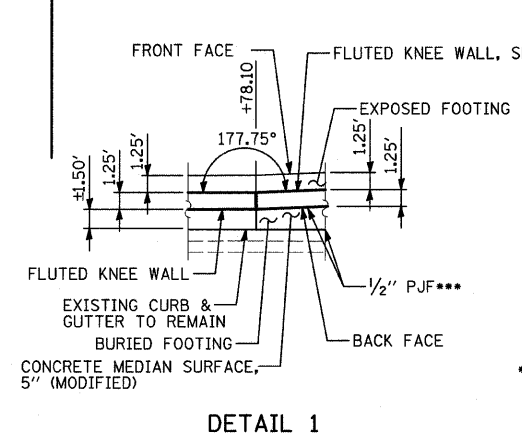
LEGEND:

- EROSION CONTROL BLANKET, SEEDING, CLASS 2A, NITROGEN, PHOSPHORUS, AND POTASSIUM FERTILIZER NUTRIENTS, TOPSOIL FURNISH AND PLACE, 4"
- EROSION CONTROL BLANKET, SEEDING, CLASS 2A, NITROGEN, PHOSPHORUS, AND POTASSIUM FERTILIZER NUTRIENTS, TOPSOIL FURNISH AND PLACE, 12" COMPOST FURNISH AND PLACE, 6"
- INLET FILTER, TO BE INSTALLED IN OFF PROJECT DRAINAGE STRUCTURES ACCEPTING STORMWATER RUNOFF



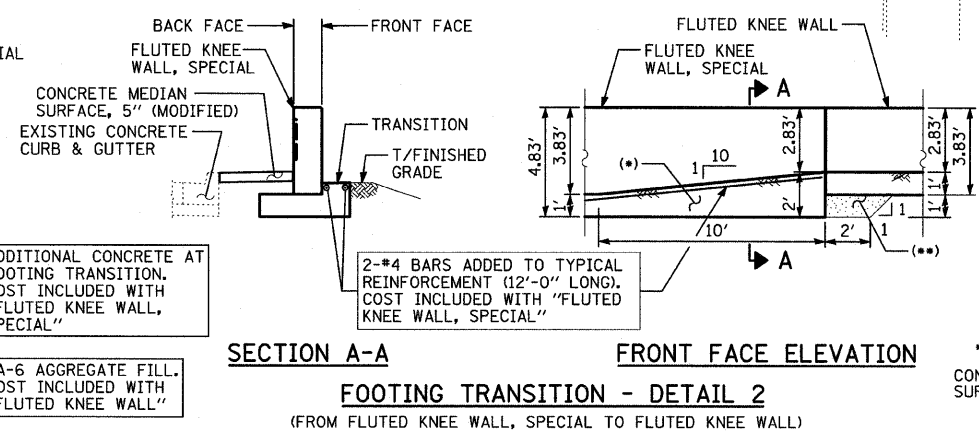
MATCHLINE NB STA. 2213+50.00

PEDESTRIAN BRIDGE AT E. 93rd STREET

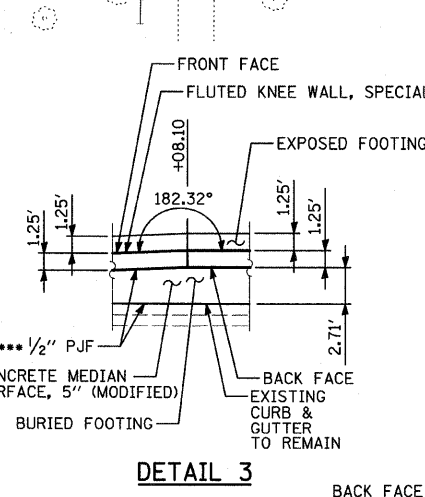


DETAIL 1

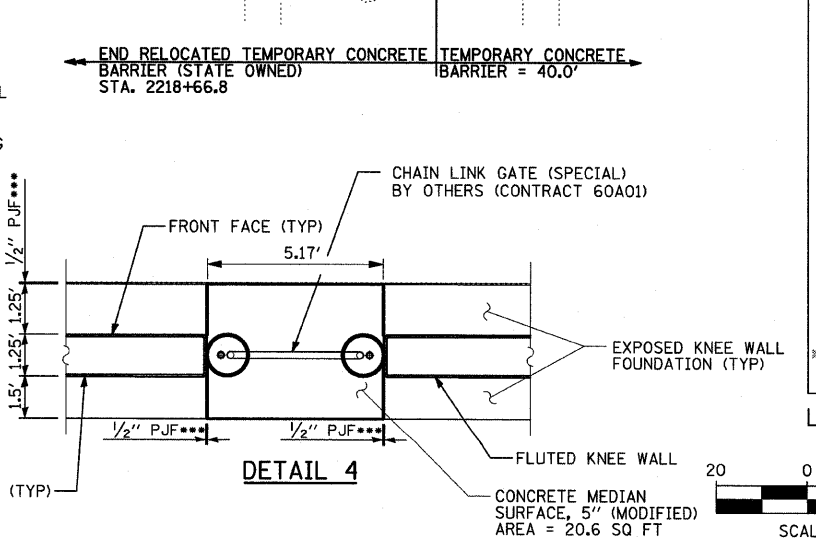
- COST INCLUDED WITH "CONCRETE MEDIAN SURFACE, 5" (MODIFIED)"
- CA-6 AGGREGATE FILL, COST INCLUDED WITH "FLUTED KNEE WALL"
- COST INCLUDED WITH "CONCRETE MEDIAN SURFACE, 5" (MODIFIED)"



SECTION A-A
FRONT FACE ELEVATION
FOOTING TRANSITION - DETAIL 2
(FROM FLUTED KNEE WALL, SPECIAL TO FLUTED KNEE WALL)

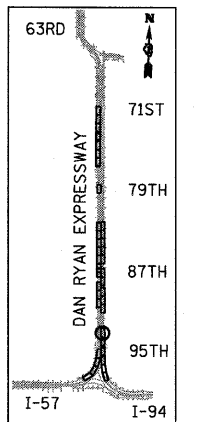


DETAIL 3

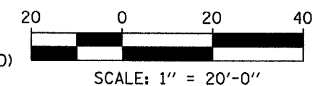


DETAIL 4

- NOTES:**
- STATION AND OFFSET CALLOUTS ALONG THE LENGTH OF EITHER FLUTED KNEE WALL OR FLUTED KNEE WALL, SPECIAL ARE TAKEN FROM THE FRONT FACE SIDE AT PROPOSED EXPANSION JOINT LOCATIONS.
 - THE CONTRACTOR SHALL PROTECT AND USE CAUTION DURING CONSTRUCTION OPERATIONS AROUND ALL EXISTING PUBLIC OR PRIVATE UTILITY FACILITIES.
 - TEMPORARY CONCRETE BARRIER, STATE OWNED SHALL NOT BE REMOVED UNTIL ALL CONSTRUCTION OPERATIONS HAVE BEEN COMPLETED OR AS DIRECTED BY THE ENGINEER.



LOCATION MAP



REVISIONS	
NAME	DATE

ILLINOIS DEPARTMENT OF TRANSPORTATION
F.A.I. 94 (DAN RYAN EXPRESSWAY)
PROPOSED PLAN
NB I-94 (DAN RYAN EXPRESSWAY)
STA. 2213+50.00 TO STA. 2219+50.00
SCALE: 1"=20'
DATE: OCTOBER 17, 2008
DRAWN BY: AMB, MAF
CHECKED BY: TGB, MI

TYLIN INTERNATIONAL

••• COST INCLUDED WITH "CONCRETE MEDIAN SURFACE, 5" (MODIFIED)"