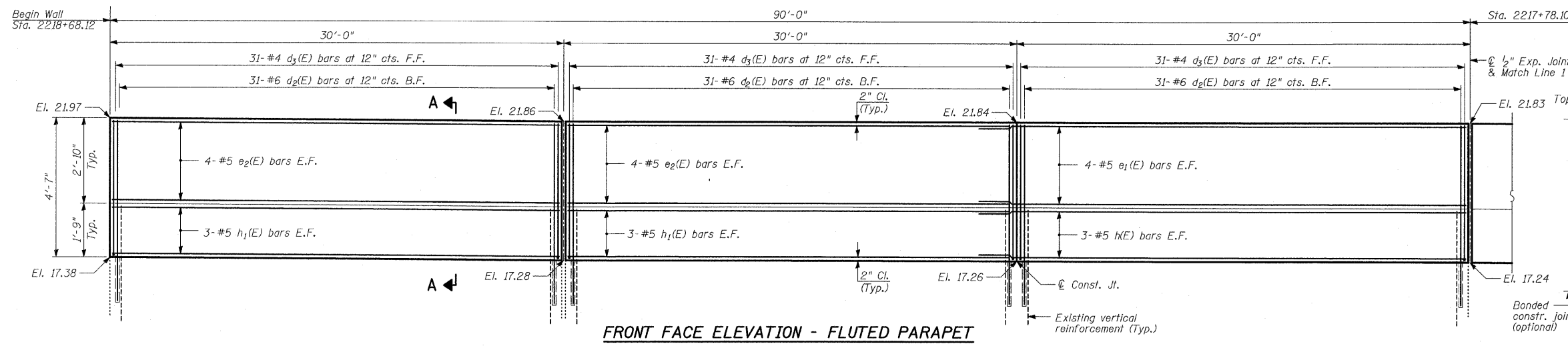
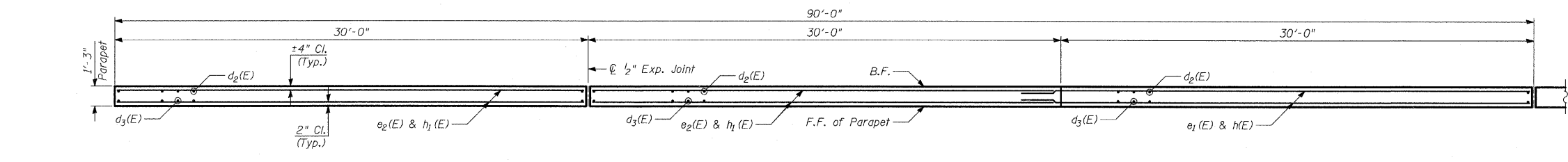


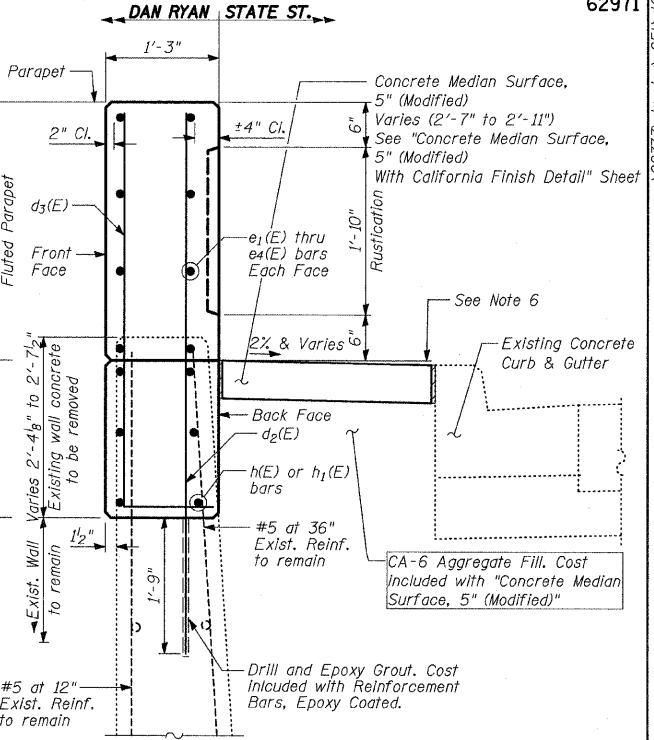
F.A.I. RTE.	SECTION	COUNTY	TOTAL SHEETS	SHEET NO.
94	1516.1 I-7	COOK	58	37
STA. 2212+06.20		TO STA. 2243+03.23		
FED. ROAD DIST. NO.	ILLINOIS	FED. AID PROJECT		
				62971



**FRONT FACE ELEVATION - FLUTED PARAPET**



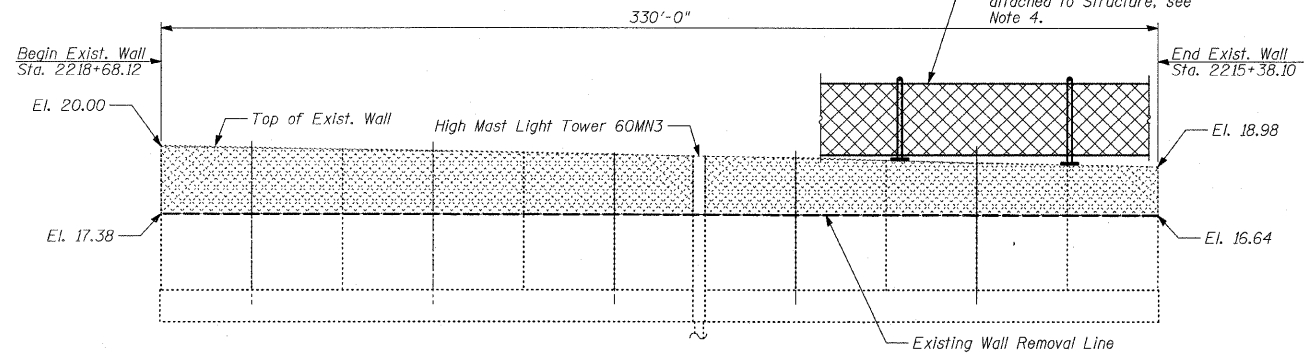
**TOP PLAN**



**SECTION A-A**

(Sta. 2215+38.10 to Sta. 2218+68.12)

- NOTES:**
1. B.F. - denotes Back Face.
  2. E.F. - denotes Each Face.
  3. F.F. - denotes Front Face.



**LIMITS OF REMOVAL OF EXISTING STRUCTURE (LOOKING EAST)**

**LEGEND**

- Concrete Removal
- Structure Excavation

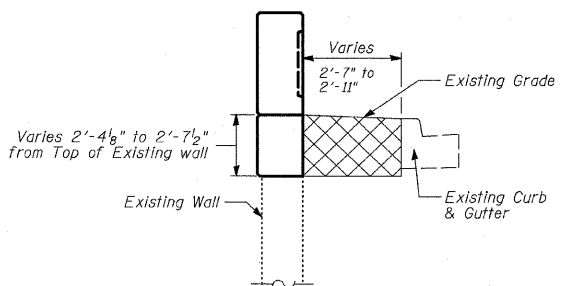
**NOTES:**

1. Remove existing wall to elevations shown. Existing vertical reinforcement shall be cleaned and incorporated into the new construction. Cost included with "Concrete Removal".
2. Existing vertical reinforcement bars that are damaged during concrete removal operations at the top of the existing walls shall be repaired or replaced using approved bar splicer or anchorage system. Cost included with "Concrete Removal".
3. See Kneewall Detail Sheets for Rustication Finish Details.
4. Cost of removal of existing chain link fence attached to structure to be included with "Concrete Removal".
5. Drill and epoxy grout d2(e) bars according to Article 584 of the Standard Specifications. The cost shall be included with "Reinforcement Bars Epoxy Coated".
6. The top edge of Knee Wall Footing or Concrete Median Surface, 5" (Modified) shall be 8" higher than the top of Existing Curb to account for future settlement.

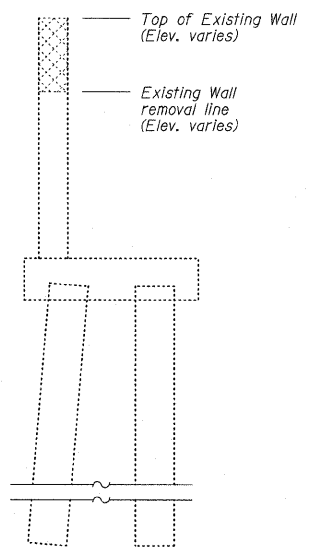
**LAP SPLICES**

Bar	Lap
#4	1'-8"
#5	2'-2"
#6	2'-7"

**TYLIN INTERNATIONAL**



**LIMITS OF STRUCTURE EXCAVATION**



**TYPICAL CROSS-SECTION**

**BILL OF MATERIAL**

Bar	No.	Size	Length	Shape
d2(E)	337	#6	6'-2"	—
d3(E)	337	#4	5'-3"	L
e1(E)	32	#5	32'-2"	—
e2(E)	40	#5	29'-8"	—
e3(E)	8	#5	25'-11"	—
e4(E)	8	#5	29'-3"	—
h(E)	24	#5	32'-2"	—
h1(E)	30	#5	29'-8"	—
h2(E)	6	#5	25'-11"	—
h3(E)	6	#5	29'-3"	—
Concrete Removal		CU YD		35
Structure Excavation		CU YD		85
Concrete Superstructure		CU YD		70
Protective Coat		SQ YD		378
Rustication Finish		SQ FT		598
Reinforcement Bars, Epoxy Coated		POUND		9,160

Reinforcement bars designated (E) shall be epoxy coated.

REVISIONS	
NAME	DATE

ILLINOIS DEPARTMENT OF TRANSPORTATION  
 F.A.I. 94 (DAN RYAN EXPRESSWAY)  
 94TH ST. TO N. OF 89TH ST. (PRIVATE)  
 PARAPET RECONSTRUCTION  
 PLAN AND ELEVATION  
 STA. 2218+68.12 TO STA. 2217+78.10  
 S.N. DESIGNED BY: MI, TB  
 SCALE: N.T.S. DRAWN BY: TB  
 DATE: OCTOBER 17, 2008 CHECKED BY: MI