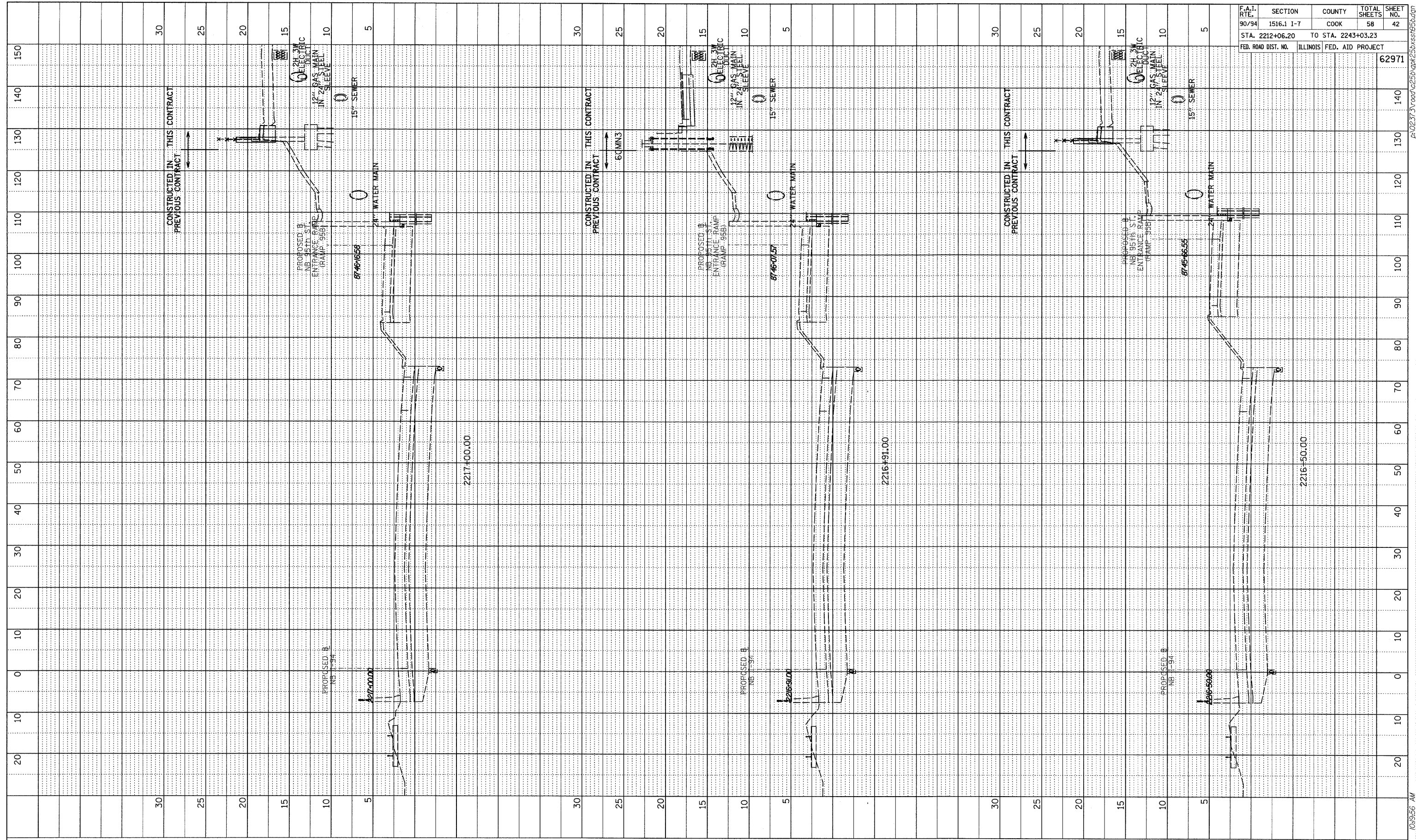
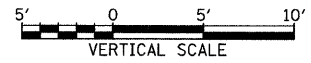


PROFILE	SURVEYED	BY	DATE
NOTE BOOK	GRADES CHECKED		
	B.M. NOTED		
	STRUCTURE NOTED		
	NO.		



F.A.I. RTE.	SECTION	COUNTY	TOTAL SHEETS	SHEET NO.
90/94	1516.1 I-7	COOK	58	42
STA. 2212+06.20		TO STA. 2243+03.23		
FED. ROAD DIST. NO.	ILLINOIS	FED. AID PROJECT		
				62971

TYLIN INTERNATIONAL



NB I-94 (DAN RYAN EXPRESSWAY)  
STA. 2216+50 TO STA. 2217+00

10/17/2008 10:19:56 AM P:\02373\road\255\gpk255\ss195b.dgn