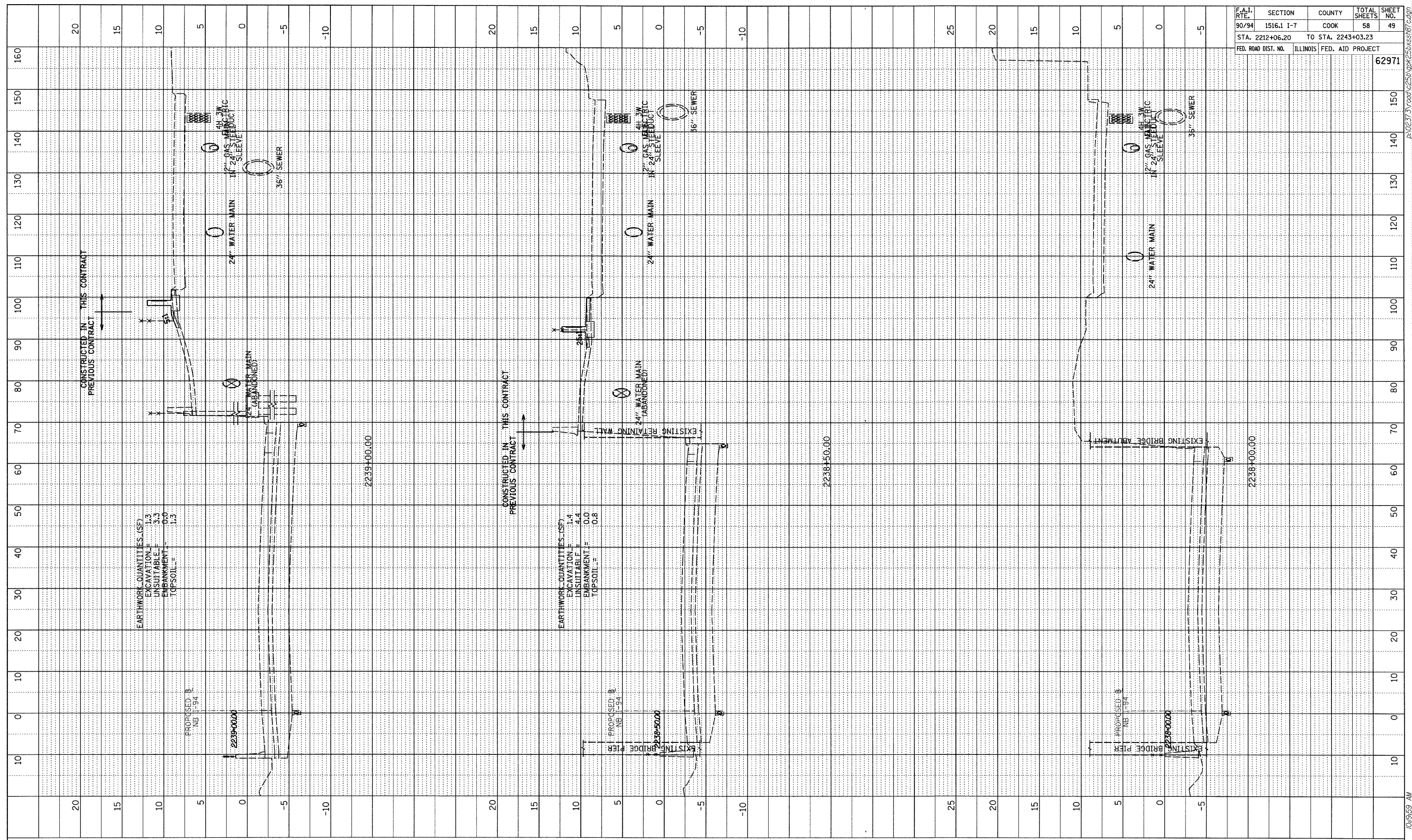
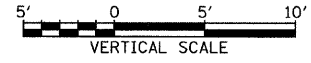
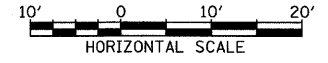


PROFILE	SURVEYED	BY	DATE
NOTE BOOK	GRADES CHECKED		
NO.	NO.		
	STRUCTURE NOTATIONS		

F.A.I. RTE.	SECTION	COUNTY	TOTAL SHEETS	SHEET NO.
90/94	1516.1 I-7	COOK	58	49
STA. 2212+06.20		TO STA. 2243+03.23		
FED. ROAD DIST. NO.	ILLINOIS	FED. AID PROJECT		
				62971



TYLIN INTERNATIONAL



NB I-94 (DAN RYAN EXPRESSWAY)
STA. 2238+00 TO STA. 2239+00

10/9/99 AM 10/7/2008