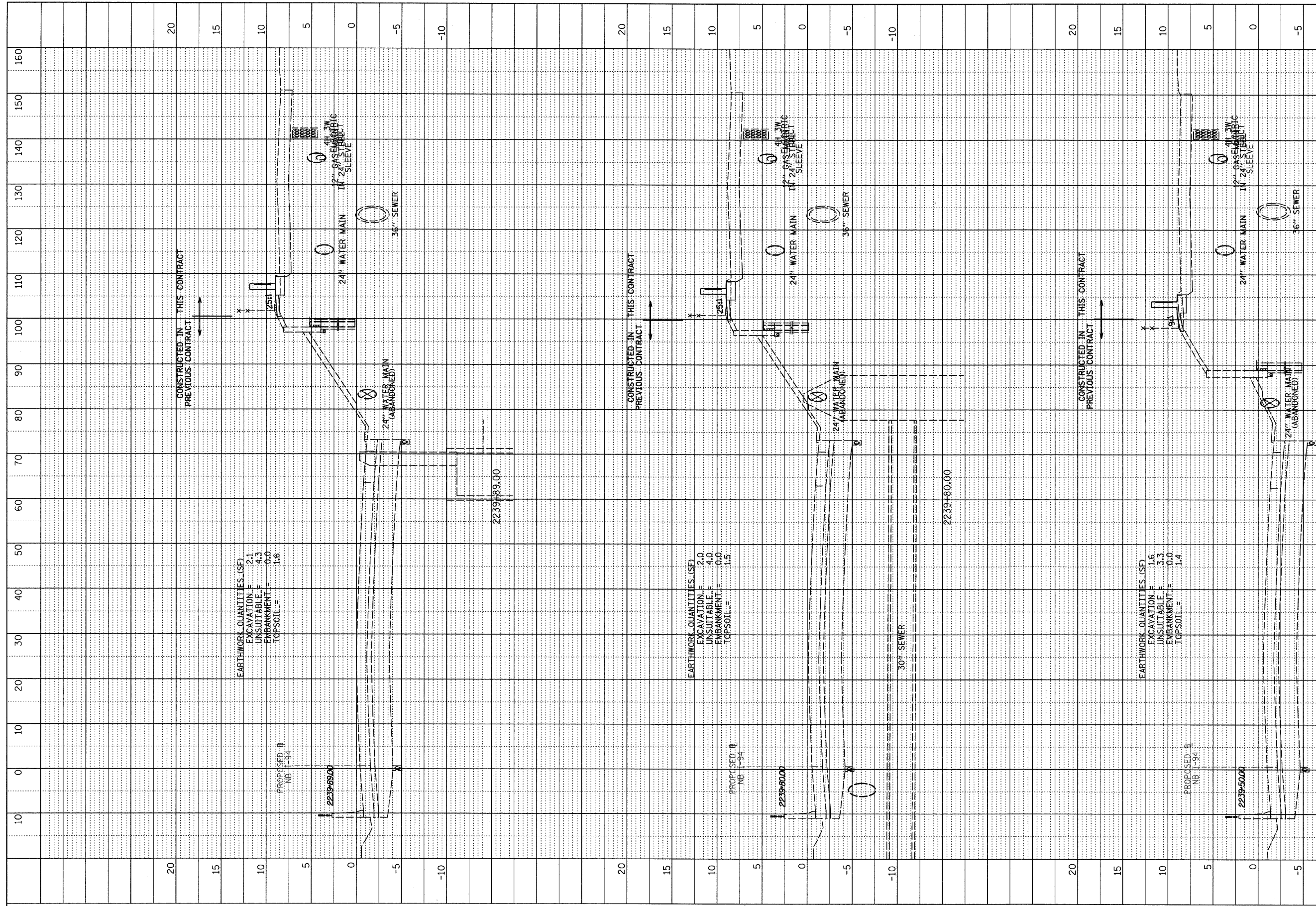


PROFILE	SURVEYED	DATE
NOTE BOOK	GRADES CHECKED	
NO.	BY	
	DATE	
	NOTED	
	NOTED	
	NOTED	



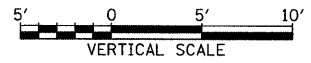
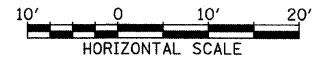
F.A.I. RTE.	SECTION	COUNTY	TOTAL SHEETS	SHEET NO.
90/94	1516.1 I-7	COOK	58	50
STA. 2212+06.20		TO STA. 2243+03.23		
FED. ROAD DIST. NO.	ILLINOIS FED. AID PROJECT			
				62971

EARTHWORK QUANTITIES (SF)
 EXCAVATION = 2.1
 UNSUITABLE = 4.3
 EMBANKMENT = 0.0
 TOPSOIL = 1.6

EARTHWORK QUANTITIES (SF)
 EXCAVATION = 2.0
 UNSUITABLE = 4.0
 EMBANKMENT = 0.0
 TOPSOIL = 1.5

EARTHWORK QUANTITIES (SF)
 EXCAVATION = 1.6
 UNSUITABLE = 3.3
 EMBANKMENT = 0.0
 TOPSOIL = 1.4

TYLIN INTERNATIONAL



NB I-94 (DAN RYAN EXPRESSWAY)
 STA. 2239+50 TO STA. 2239+89

10/17/2008 10:59 AM P:\0237\3\road\2250\pk25\sheet50.dgn