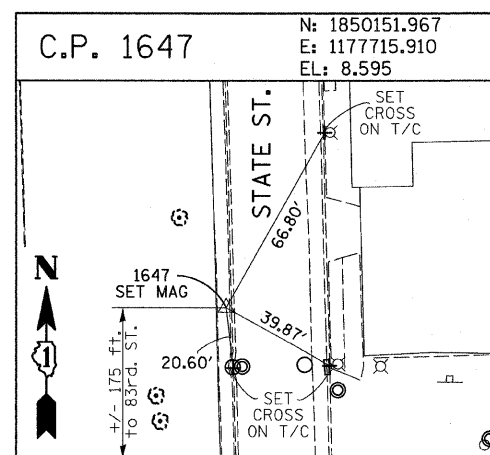
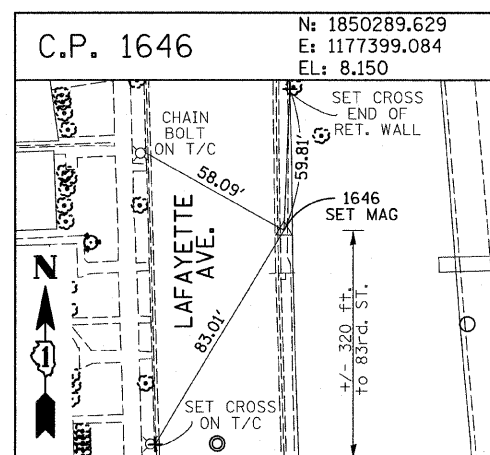
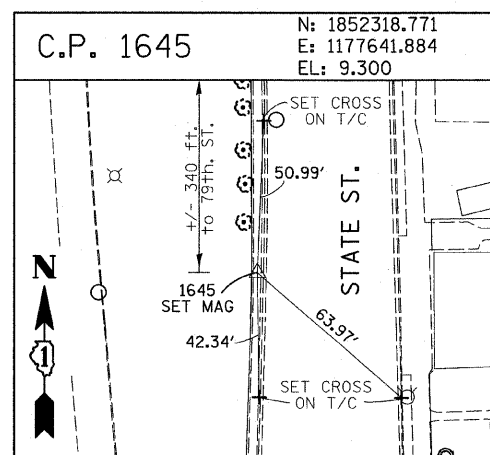
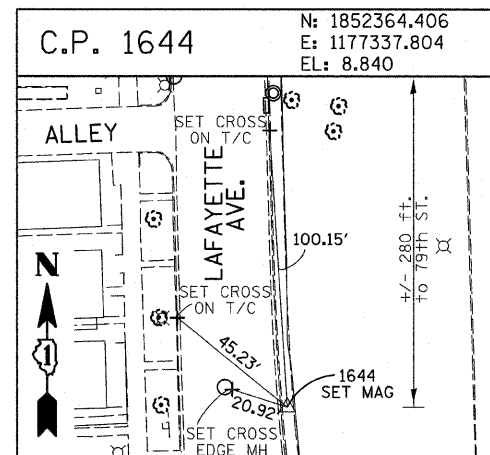
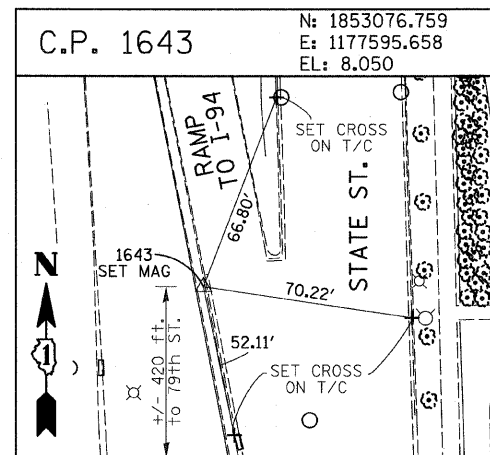
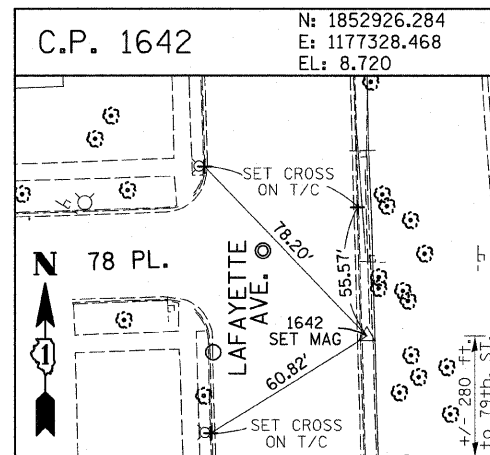
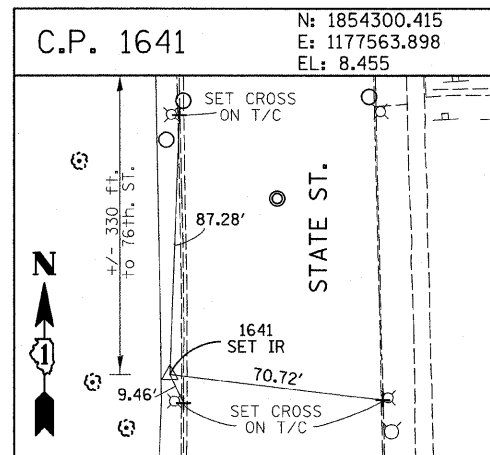
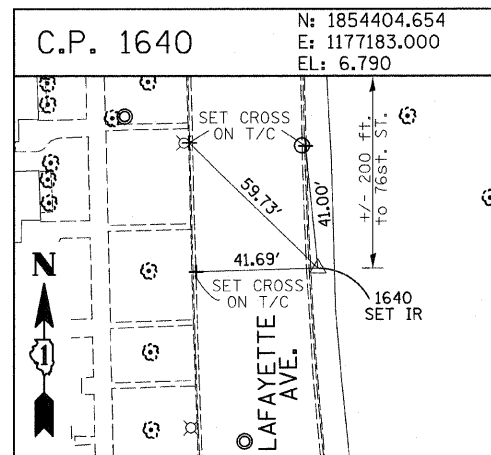
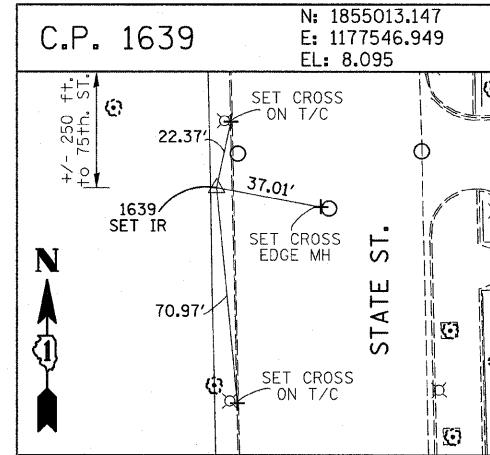
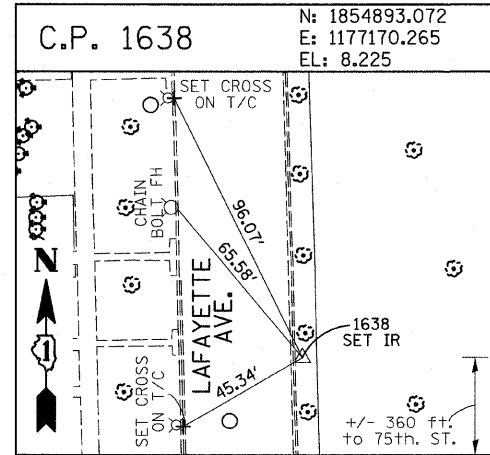
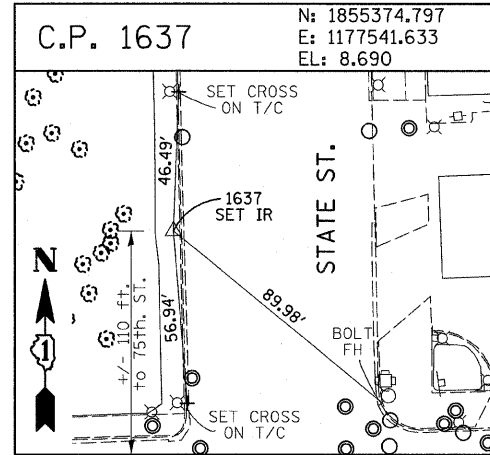
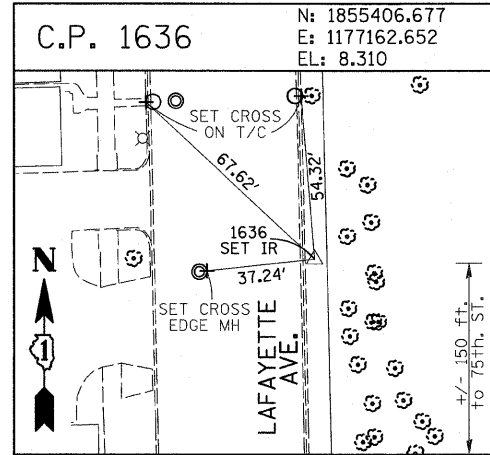
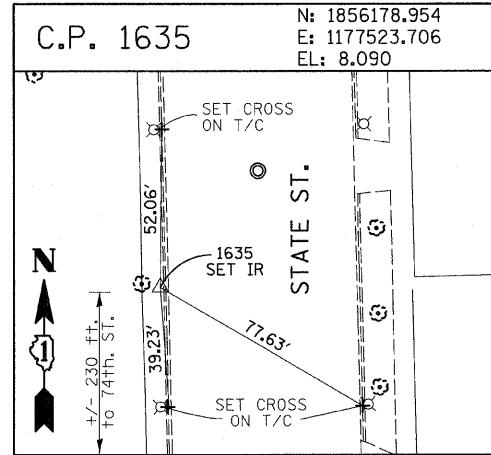
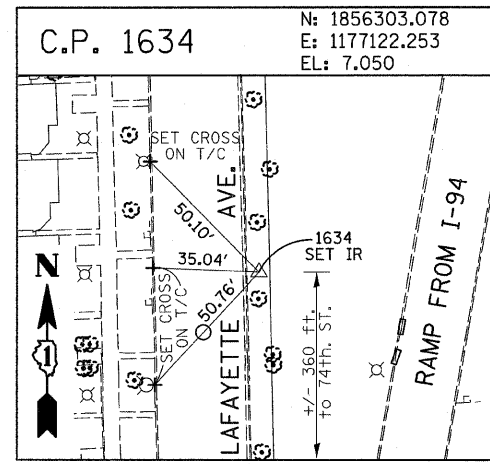
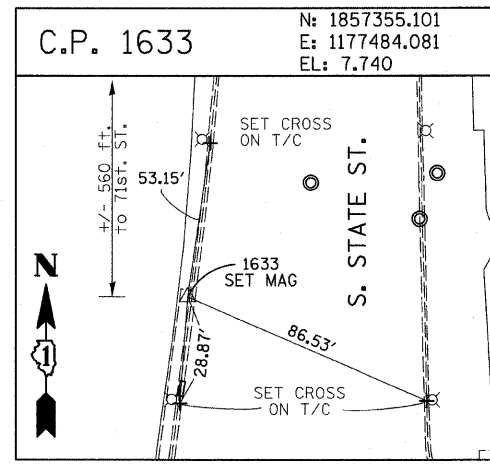
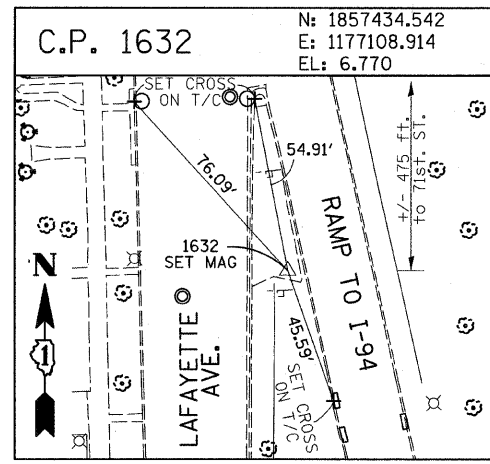
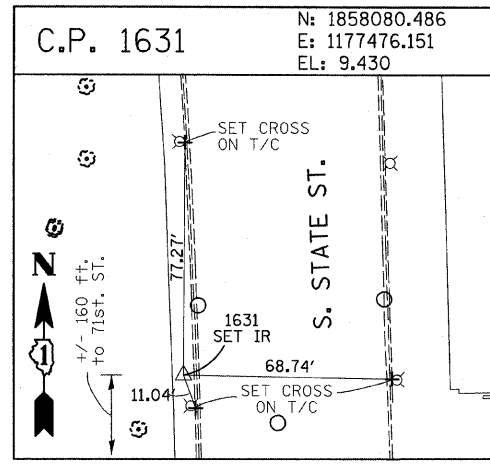
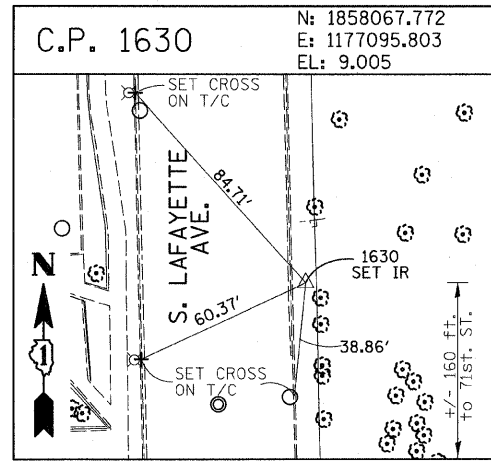


F.A.I. RTE.	SECTION	COUNTY	TOTAL SHEETS	SHEET NO.
94	1717 I-6	COOK	60	12
STA. 2265+32.63		TO STA. 2287+21.27		
FED. ROAD DIST. NO.		ILLINOIS FED. AID PROJECT		
62973				



American Surveying Consultants, P.C.
 SURVEYORS-ENGINEERS-SCIENTISTS-MAPPING SCIENTISTS
 1037 Plank Rd., Naperville, IL 60563
 630-221-1100

REVISIONS	
NAME	DATE

ILLINOIS DEPARTMENT OF TRANSPORTATION
 F.A.I. 94 (DAN RYAN EXPRESSWAY)
 SURVEY TIES FOR CONTROL POINTS
 SHEET 3 OF 7
 SCALE: 1"=30'
 DATE: OCTOBER 17, 2008
 DRAWN BY: GSP
 CHECKED BY: MMW

P:\0237\31\000\250\val\250949\3b.dgn 10/17/2008 1:28:30 AM