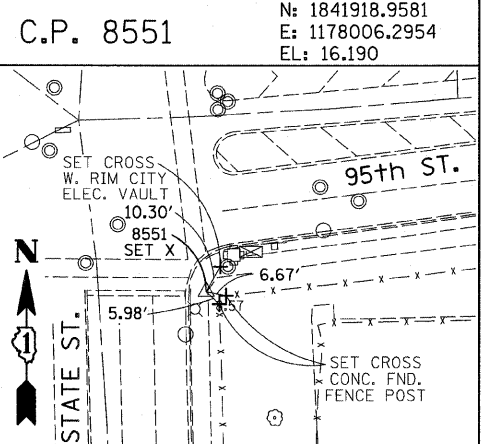
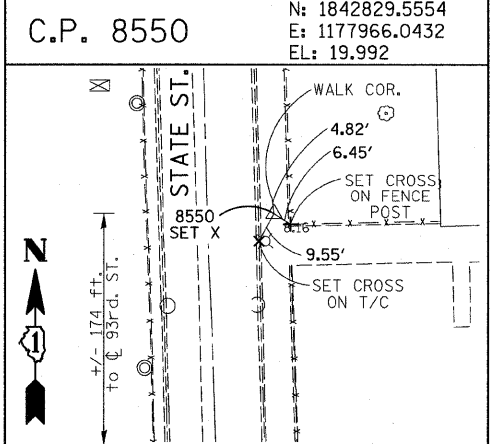
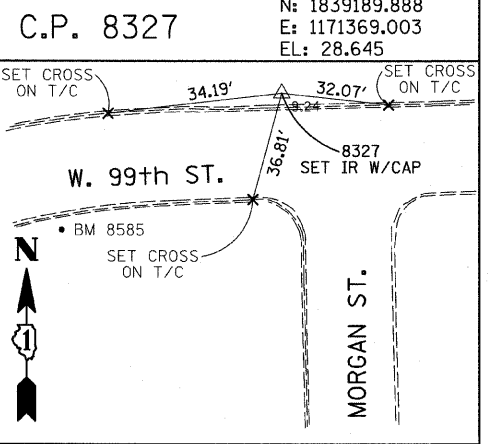
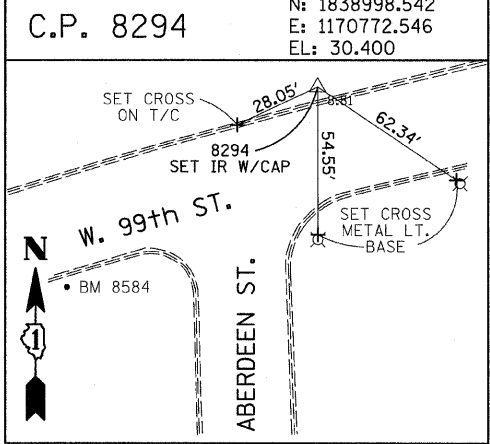
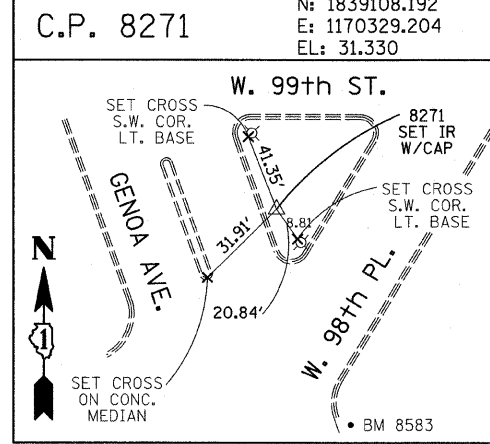
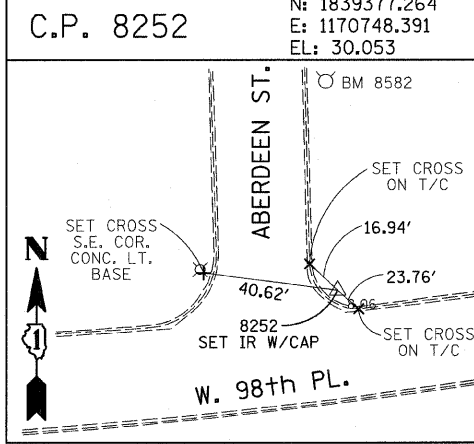
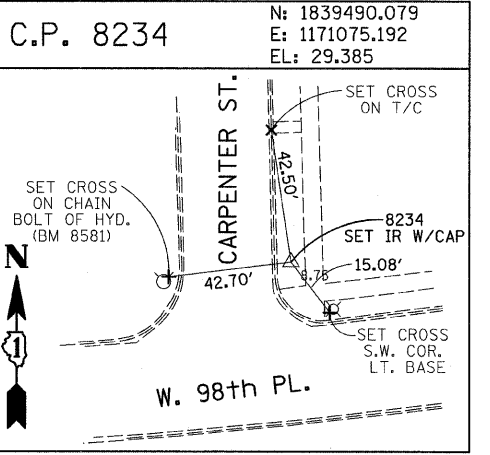
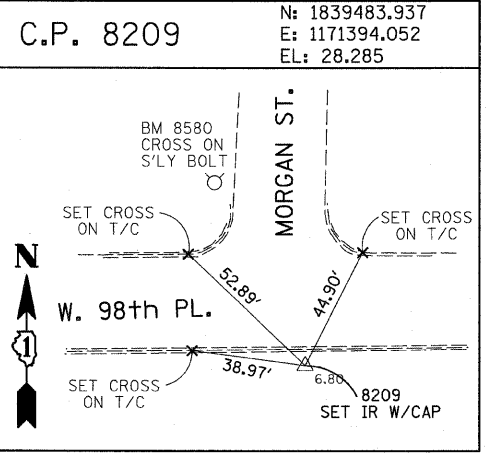
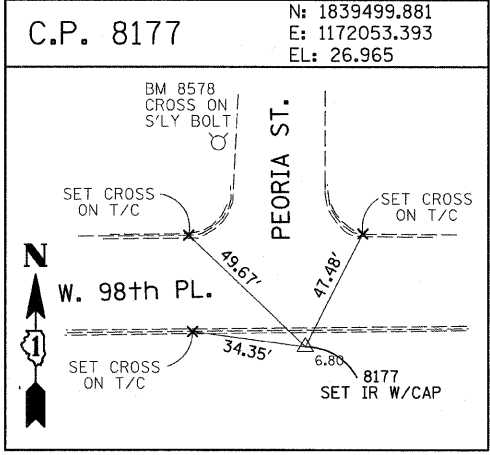
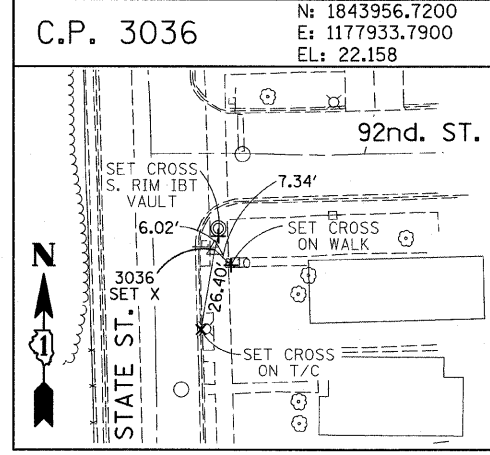
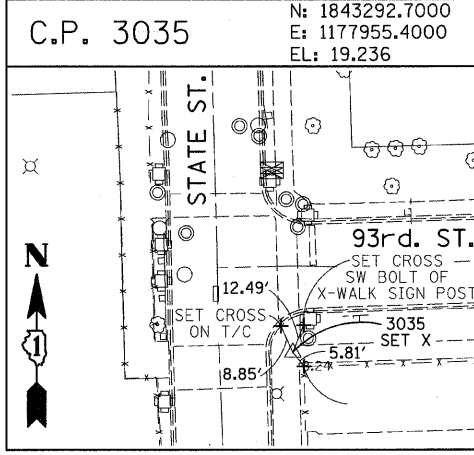
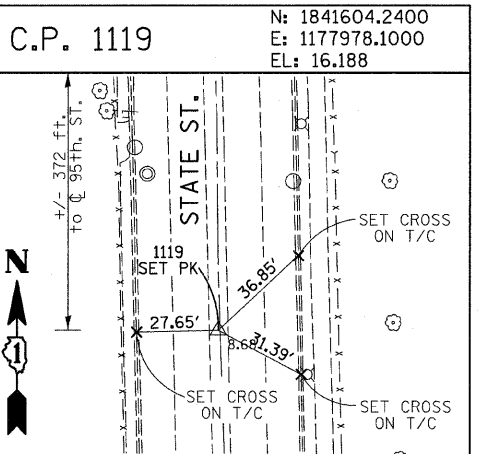
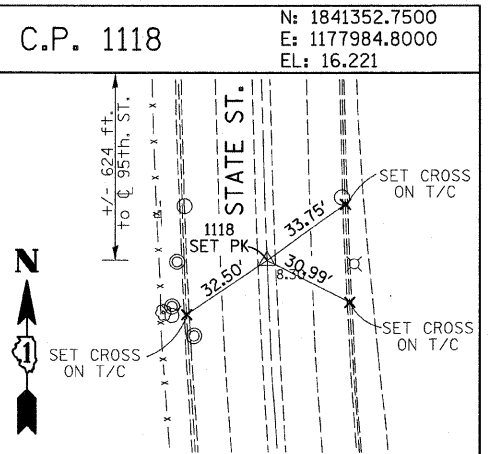
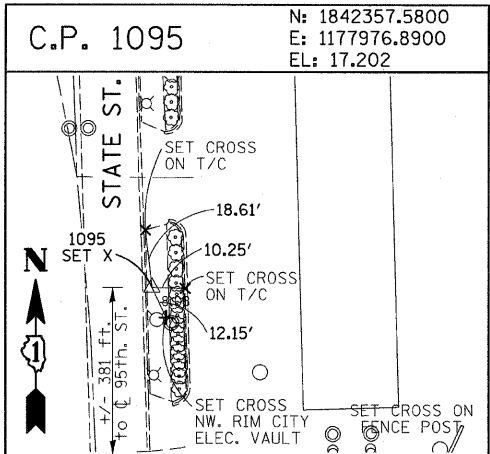
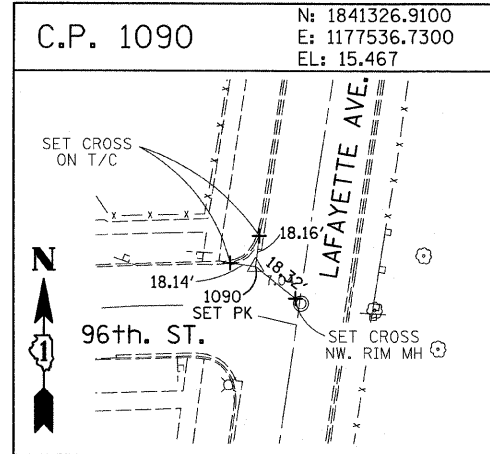
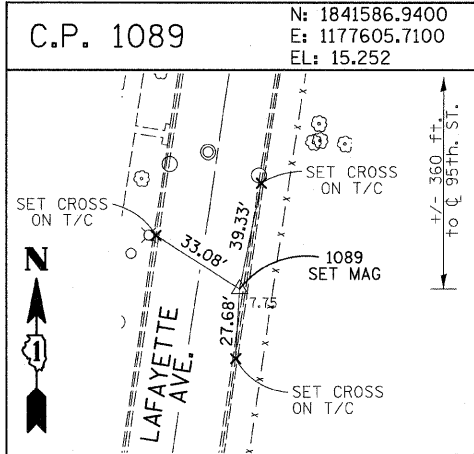


F.A.I. RTE.	SECTION	COUNTY	TOTAL SHEETS	SHEET NO.
94	1717 I-6	COOK	60	15
STA. 2265+32.63		TO STA. 2287+21.27		
FED. ROAD DIST. NO.		ILLINOIS FED. AID PROJECT		
62973				



American Surveying Consultants, P.C.  
1827 Flood St., Chicago, IL 60608  
Tel: 312-467-4211, Fax: 312-467-4212

REVISIONS	
NAME	DATE

ILLINOIS DEPARTMENT OF TRANSPORTATION  
F.A.I. 94 (DAN RYAN EXPRESSWAY)  
SURVEY TIES FOR CONTROL POINTS  
SHEET 6 OF 7  
SCALE: 1"=30'  
DATE: OCTOBER 17, 2008  
DRAWN BY: GSP  
CHECKED BY: MMW

10/17/2008 11:28:37 AM P:\02-37-3\road\6250\1255\610-3b.dgn