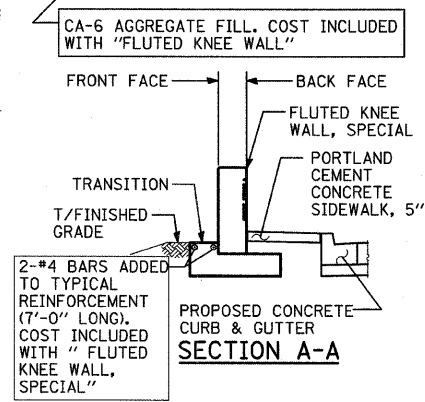
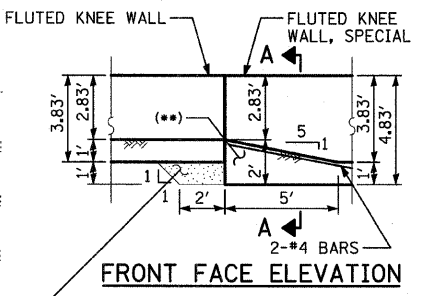
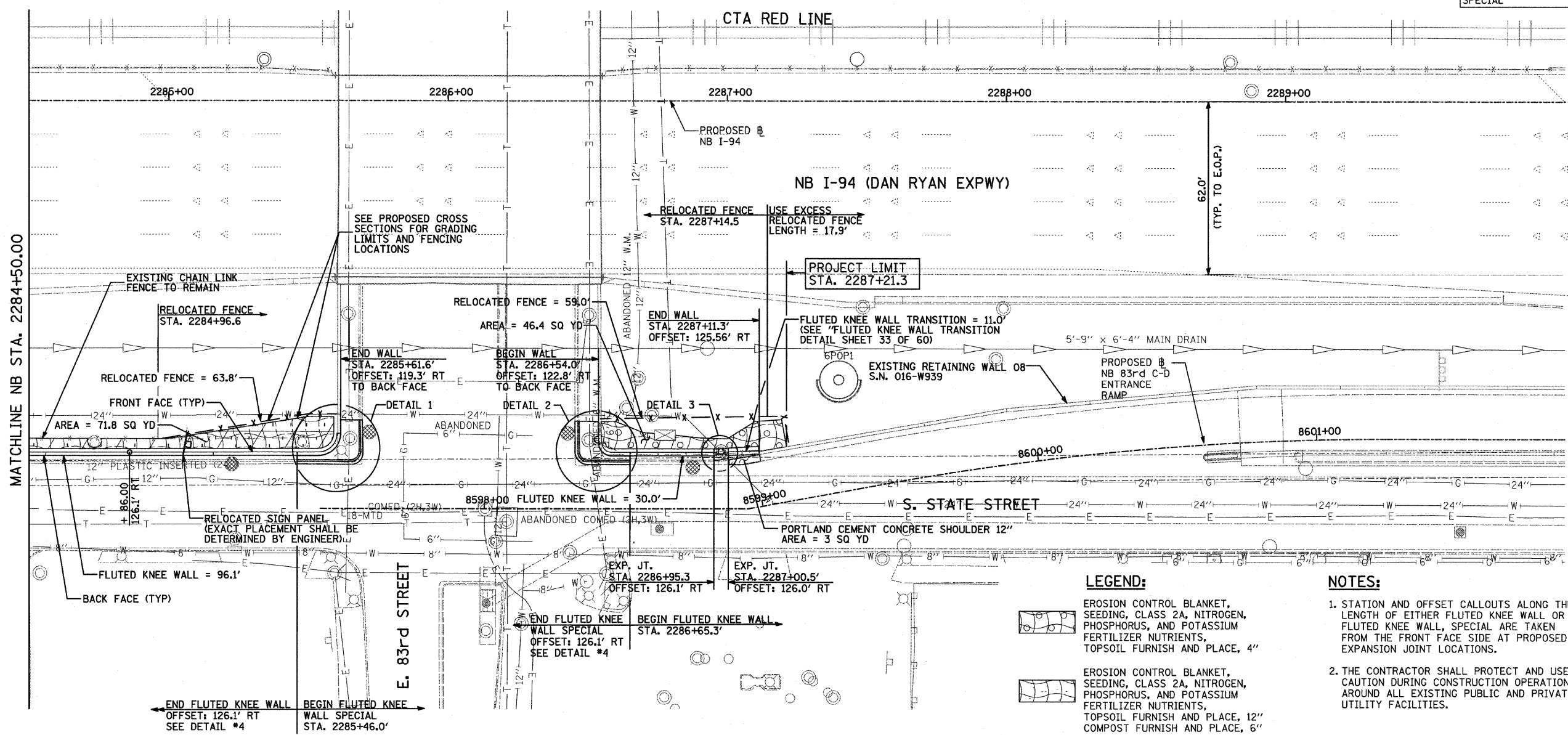


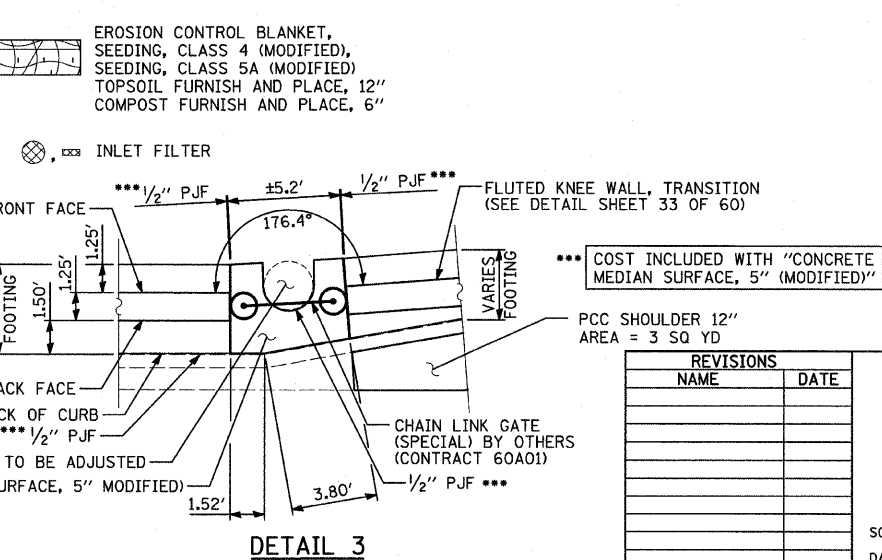
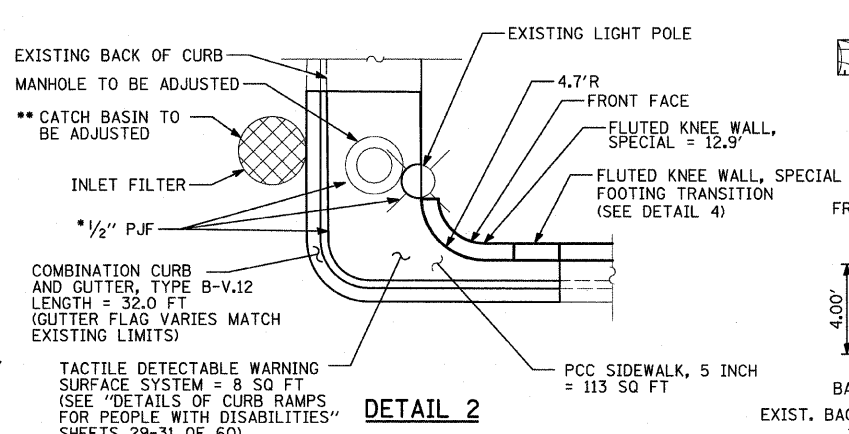
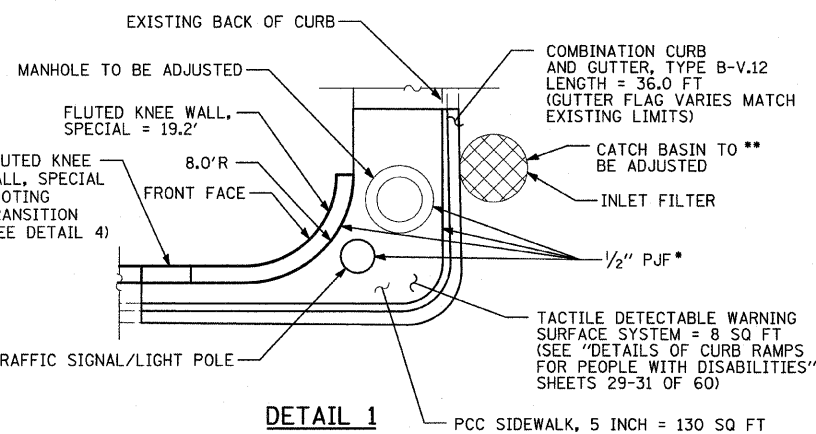
F.A.I. RTE.	SECTION	COUNTY	TOTAL SHEETS	SHEET NO.
94	1717 I-6	COOK	60	26
STA. 2265+32.63 TO STA. 2287+21.27		ILLINOIS FED. AID PROJECT		

62973

\*\* ADDITIONAL CONCRETE AT FOOTING TRANSITION, COST INCLUDED WITH "FLUTED KNEE WALL, SPECIAL"



FOOTING TRANSITION-DETAIL 4

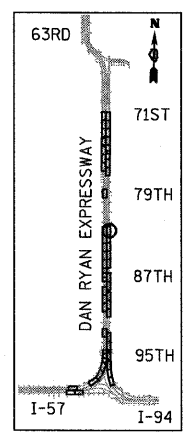


**LEGEND:**

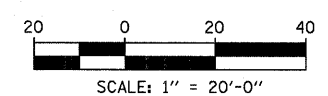
- EROSION CONTROL BLANKET, SEEDING, CLASS 2A, NITROGEN, PHOSPHORUS, AND POTASSIUM FERTILIZER NUTRIENTS, TOPSOIL FURNISH AND PLACE, 4"
- EROSION CONTROL BLANKET, SEEDING, CLASS 2A, NITROGEN, PHOSPHORUS, AND POTASSIUM FERTILIZER NUTRIENTS, TOPSOIL FURNISH AND PLACE, 12" COMPOST FURNISH AND PLACE, 6"
- EROSION CONTROL BLANKET, SEEDING, CLASS 4 (MODIFIED), SEEDING, CLASS 5A (MODIFIED) TOPSOIL FURNISH AND PLACE, 12" COMPOST FURNISH AND PLACE, 6"

**NOTES:**

- STATION AND OFFSET CALLOUTS ALONG THE LENGTH OF EITHER FLUTED KNEE WALL OR FLUTED KNEE WALL, SPECIAL ARE TAKEN FROM THE FRONT FACE SIDE AT PROPOSED EXPANSION JOINT LOCATIONS.
- THE CONTRACTOR SHALL PROTECT AND USE CAUTION DURING CONSTRUCTION OPERATIONS AROUND ALL EXISTING PUBLIC AND PRIVATE UTILITY FACILITIES.



LOCATION MAP



REVISIONS	
NAME	DATE

ILLINOIS DEPARTMENT OF TRANSPORTATION  
 F.A.I. 94 (DAN RYAN EXPRESSWAY)  
**PROPOSED PLAN**  
 NB I-94 (DAN RYAN EXPRESSWAY)  
 STA. 2284+50.00 TO 2290+00.00  
 SCALE: 1"=20' DRAWN BY: AMB, MAF, TB  
 DATE: OCTOBER 17, 2008 CHECKED BY: TGB, MI

TYLIN INTERNATIONAL

\* COST INCLUDED WITH "PCC SIDEWALK, 5 INCH"  
 \*\* ANY ADDITIONAL CONCRETE WORK REQUIRED TO PATCH ROADWAY SHALL BE INCLUDED IN THE COST OF "CATCH BASIN TO BE ADJUSTED"