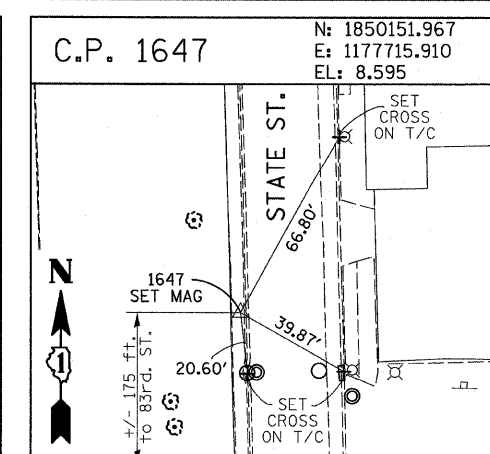
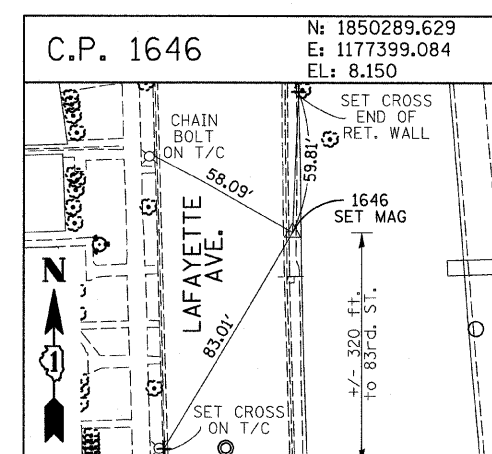
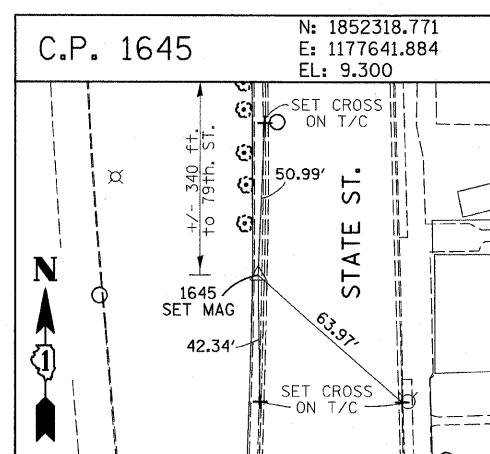
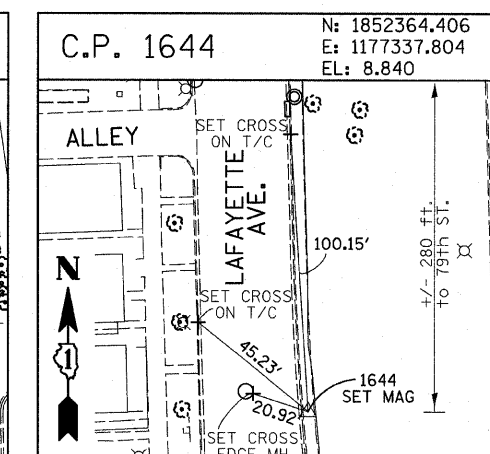
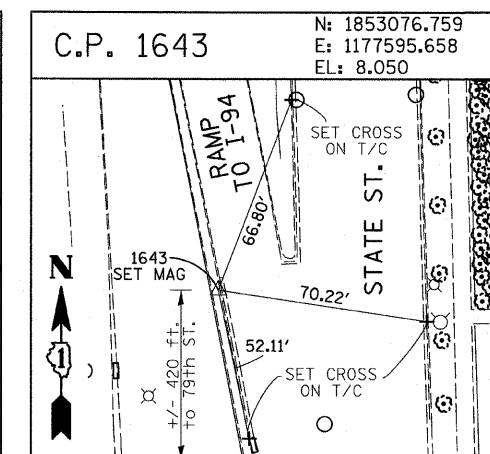
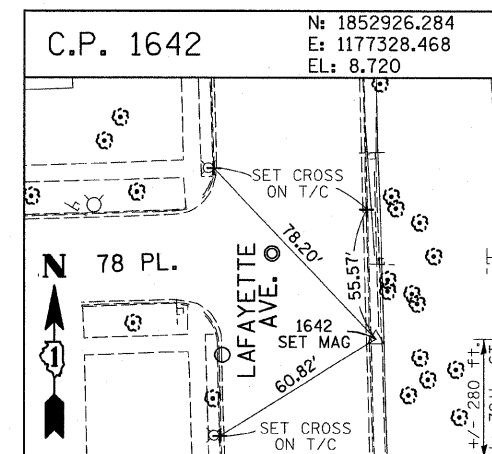
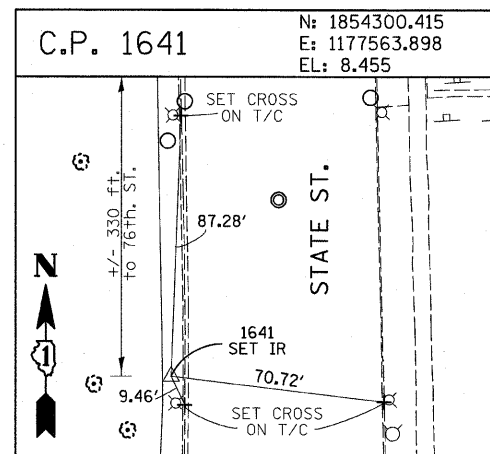
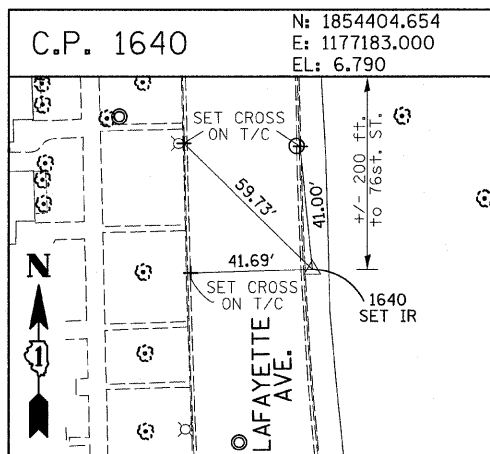
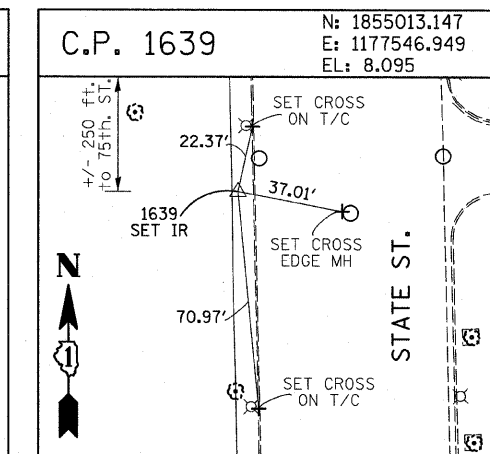
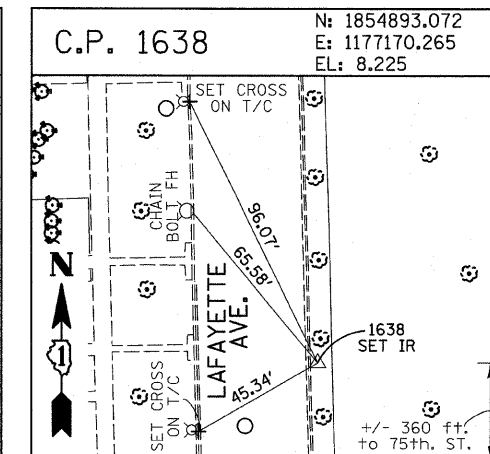
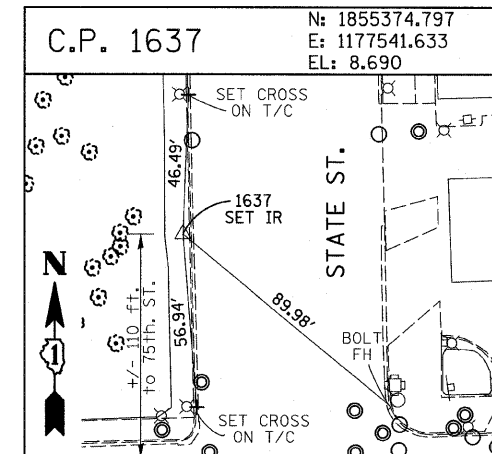
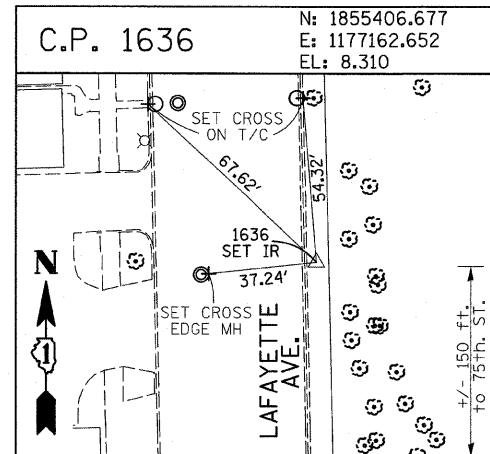
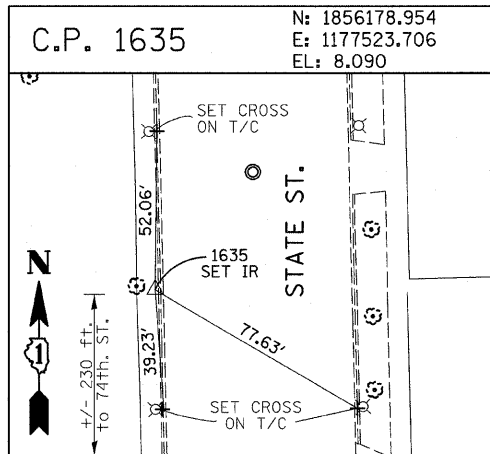
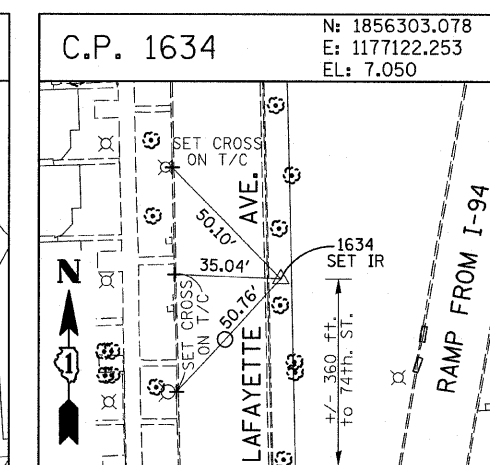
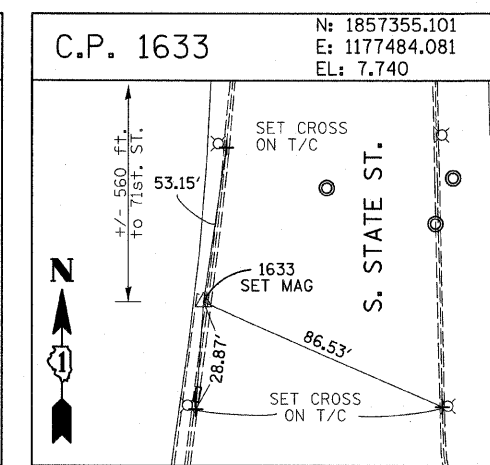
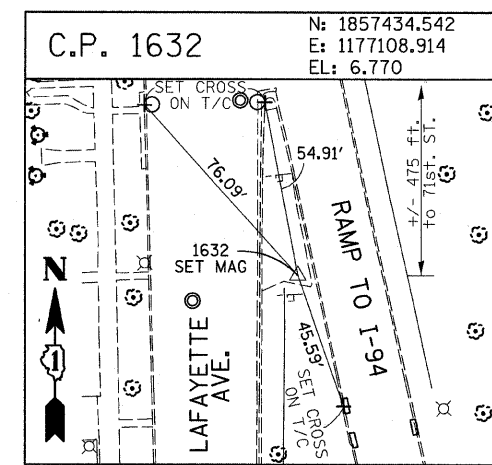
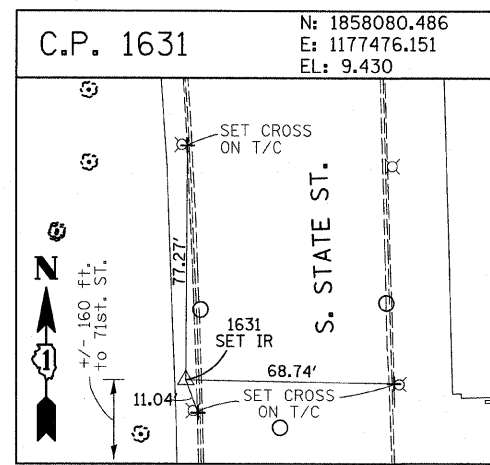
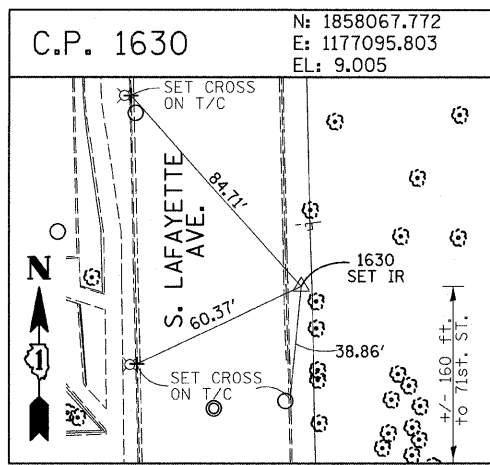


F.A.I. RTE.	SECTION	COUNTY	TOTAL SHEETS	SHEET NO.
94	1818 I-6	COOK	42	11
STA. 2327+79.39		TO STA. 2338+67.22		
FED. ROAD DIST. NO.		ILLINOIS FED. AID PROJECT		
62974				



American Surveying Consultants, P.C.  
 1837 Park Blvd., Suite 1100, Chicago, IL 60614  
 312-467-8888

REVISIONS	
NAME	DATE

ILLINOIS DEPARTMENT OF TRANSPORTATION  
 F.A.I. 94 (DAN RYAN EXPRESSWAY)  
 SURVEY TIES FOR CONTROL POINTS  
 SHEET 3 OF 7

SCALE: 1"=30'  
 DATE: FEBRUARY 13, 2009  
 DRAWN BY: GSP  
 CHECKED BY: MMW

3/19/2009 1:28:39 PM