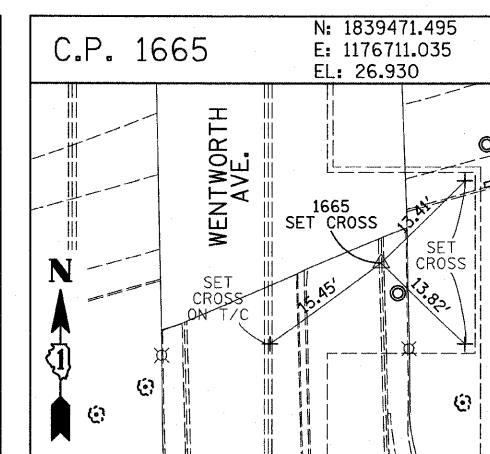
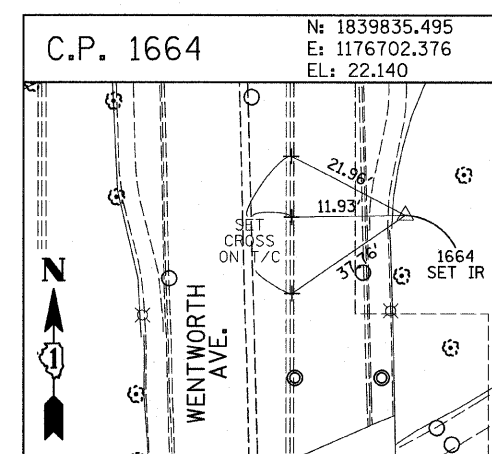
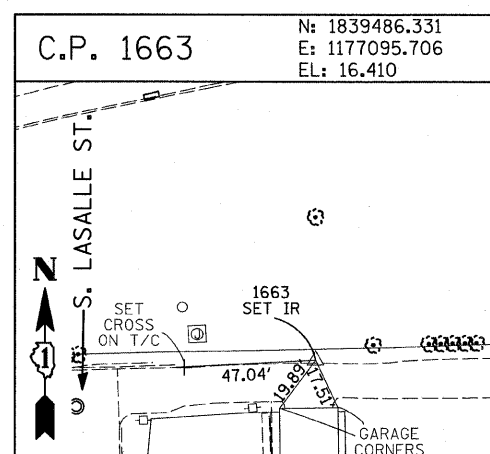
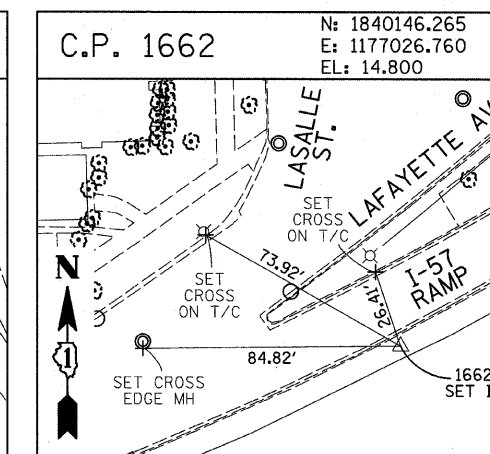
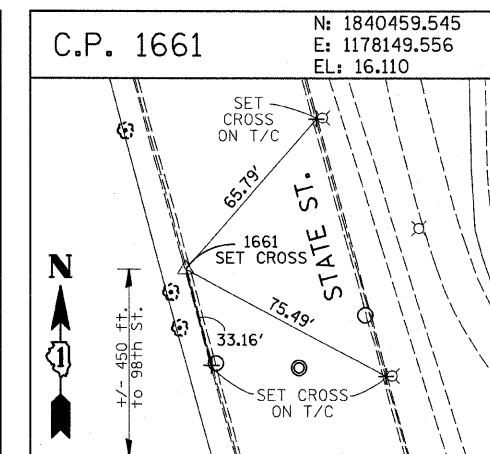
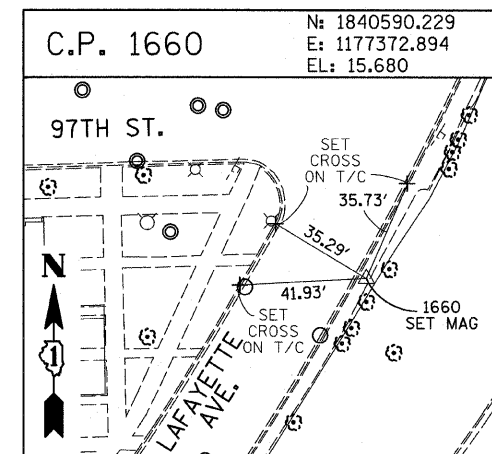
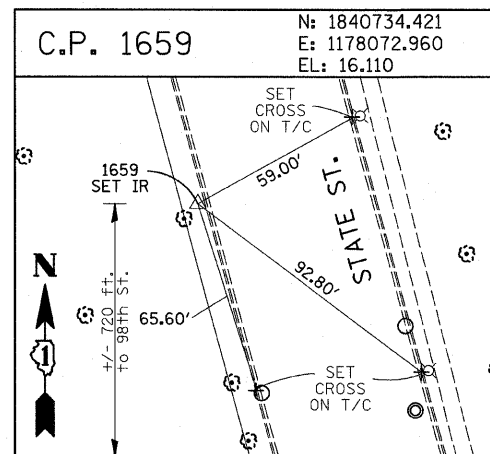
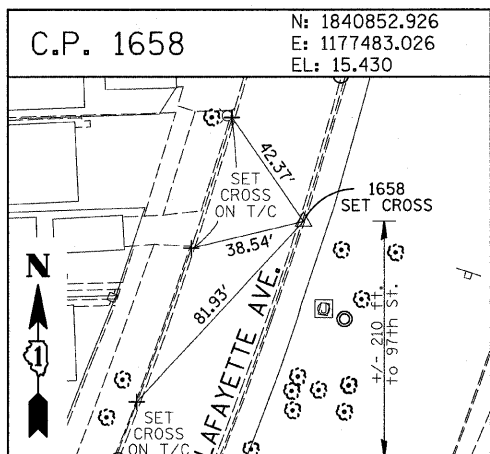
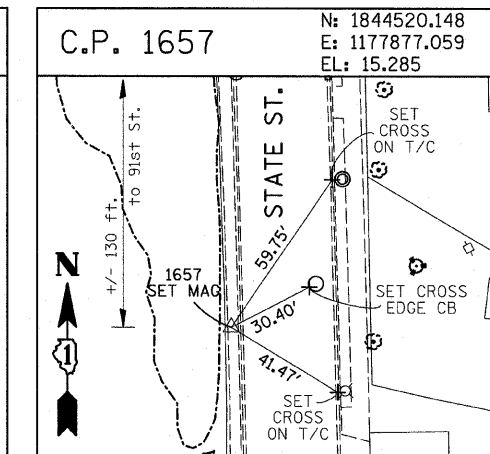
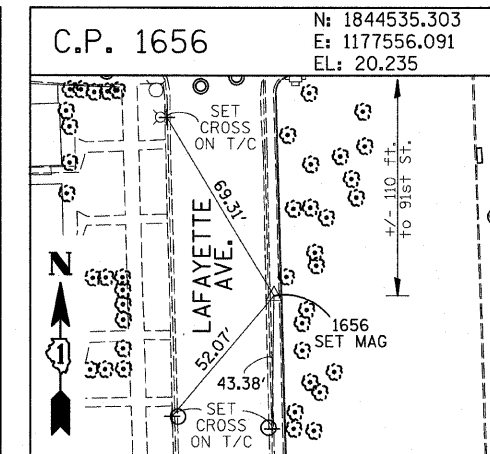
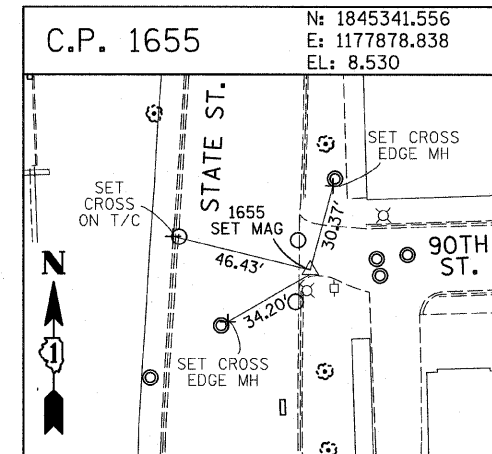
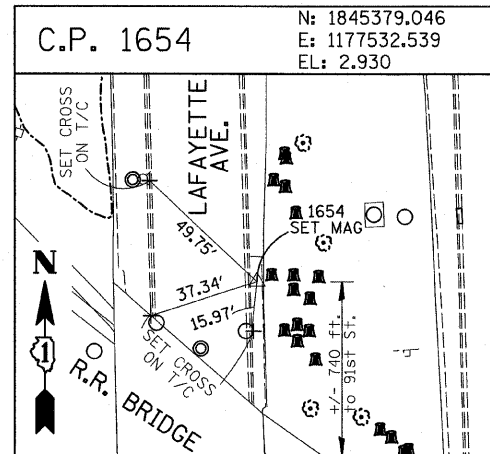
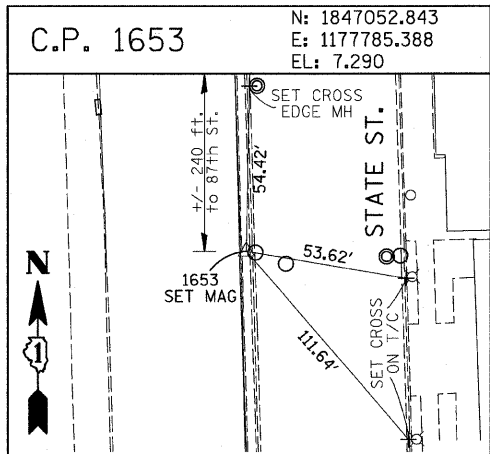
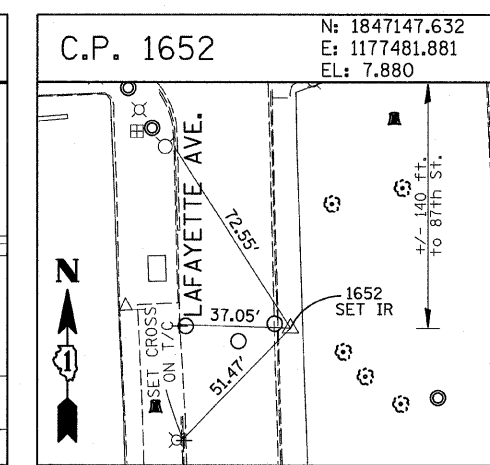
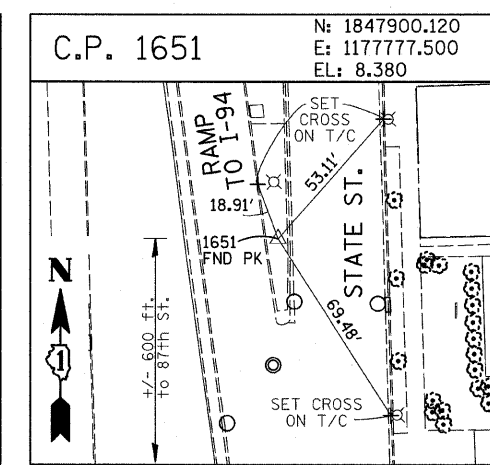
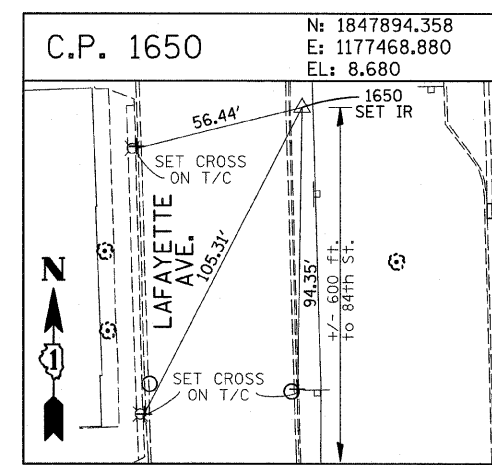
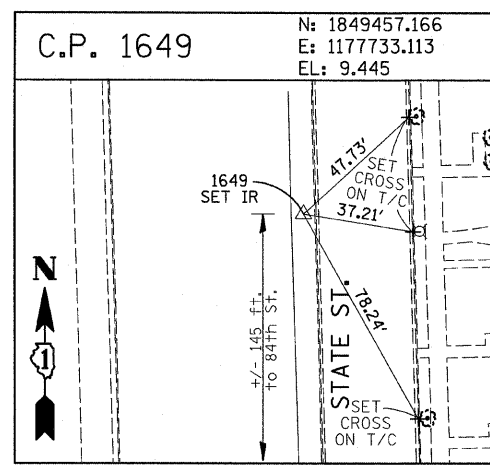
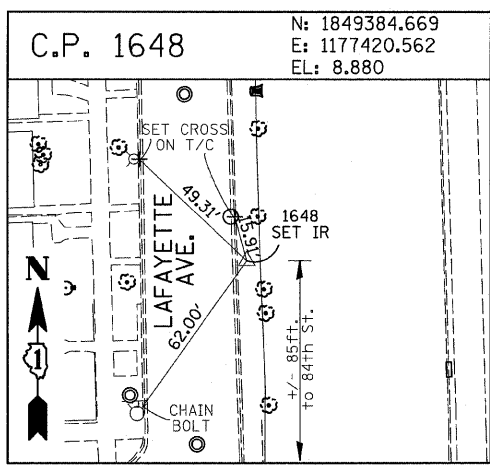


F.A.I. RTE.	SECTION	COUNTY	TOTAL SHEETS	SHEET NO.
94	1818 1-6	COOK	42	12
STA. 2327+79.39		TO STA. 2338+67.22		
FED. ROAD DIST. NO.	ILLINOIS	FED. AID PROJECT		
		62974		



American Surveying Consultants, P.C.
 1837 Park Blvd., Suite 100, Naperville, IL 60563
 (630) 335-1100

REVISIONS	
NAME	DATE

ILLINOIS DEPARTMENT OF TRANSPORTATION
 F.A.I. 94 (DAN RYAN EXPRESSWAY)
 SURVEY TIES FOR CONTROL POINTS
 SHEET 4 OF 7
 SCALE: 1"=30'
 DATE: FEBRUARY 13, 2009
 DRAWN BY: GSP
 CHECKED BY: MMW

3/19/2009 1:28:41 PM