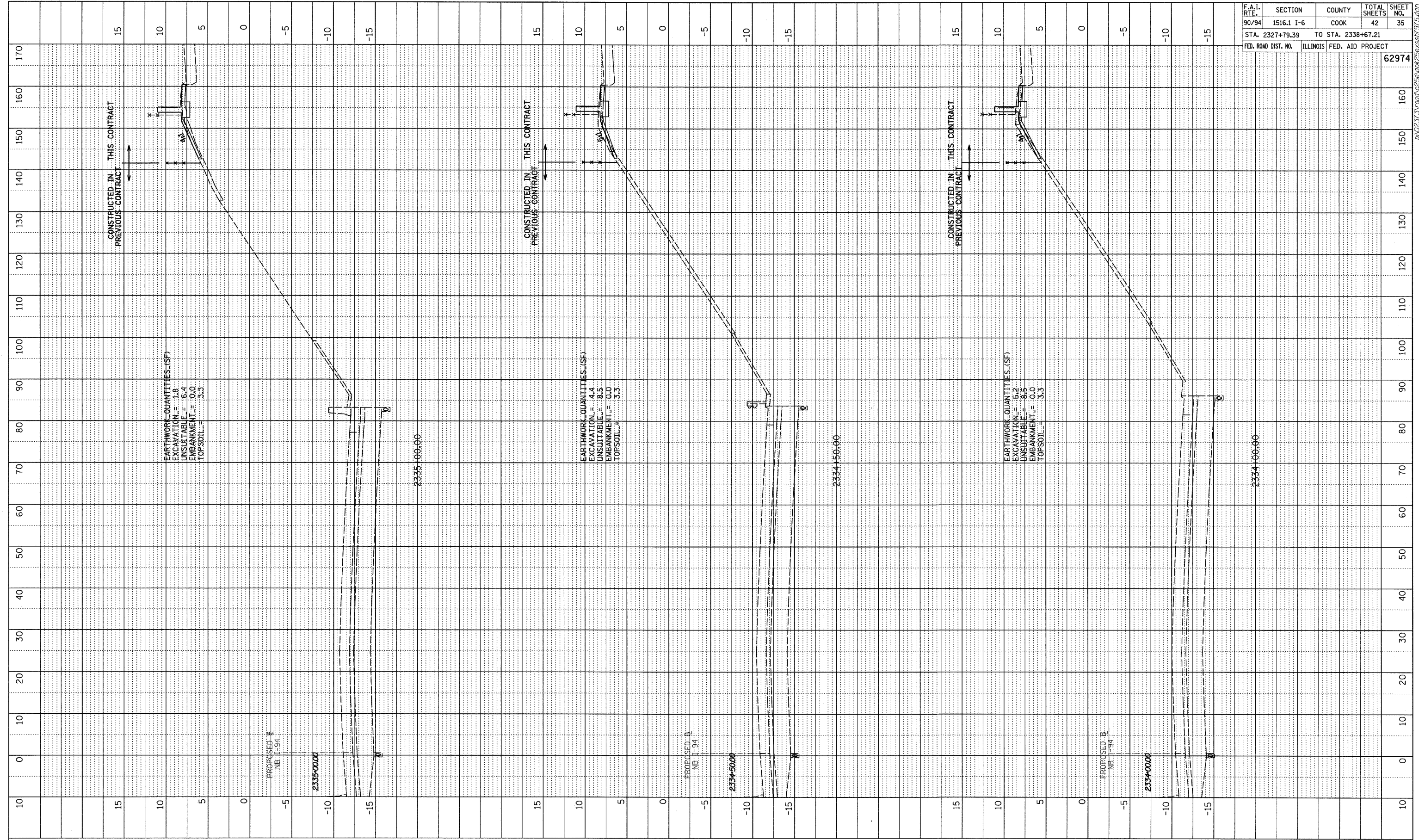
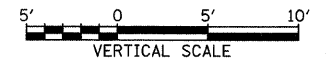


PROFILE SURVEYED BY DATE
 PROJECT NO. CHECKED BY
 NOTE BOOK NO. NOTED BY
 NO. STRUCTURE NOTATIONS CHFD



F.A.I. RTE.	SECTION	COUNTY	TOTAL SHEETS	SHEET NO.
90/94	1516.1 I-6	COOK	42	35
STA. 2327+79.39		TO STA. 2338+67.21		
FED. ROAD DIST. NO.	ILLINOIS FED. AID PROJECT		62974	

TYLIN INTERNATIONAL



NB I-94 (DAN RYAN EXPRESSWAY)
 STA. 2334+00 TO STA. 2335+00