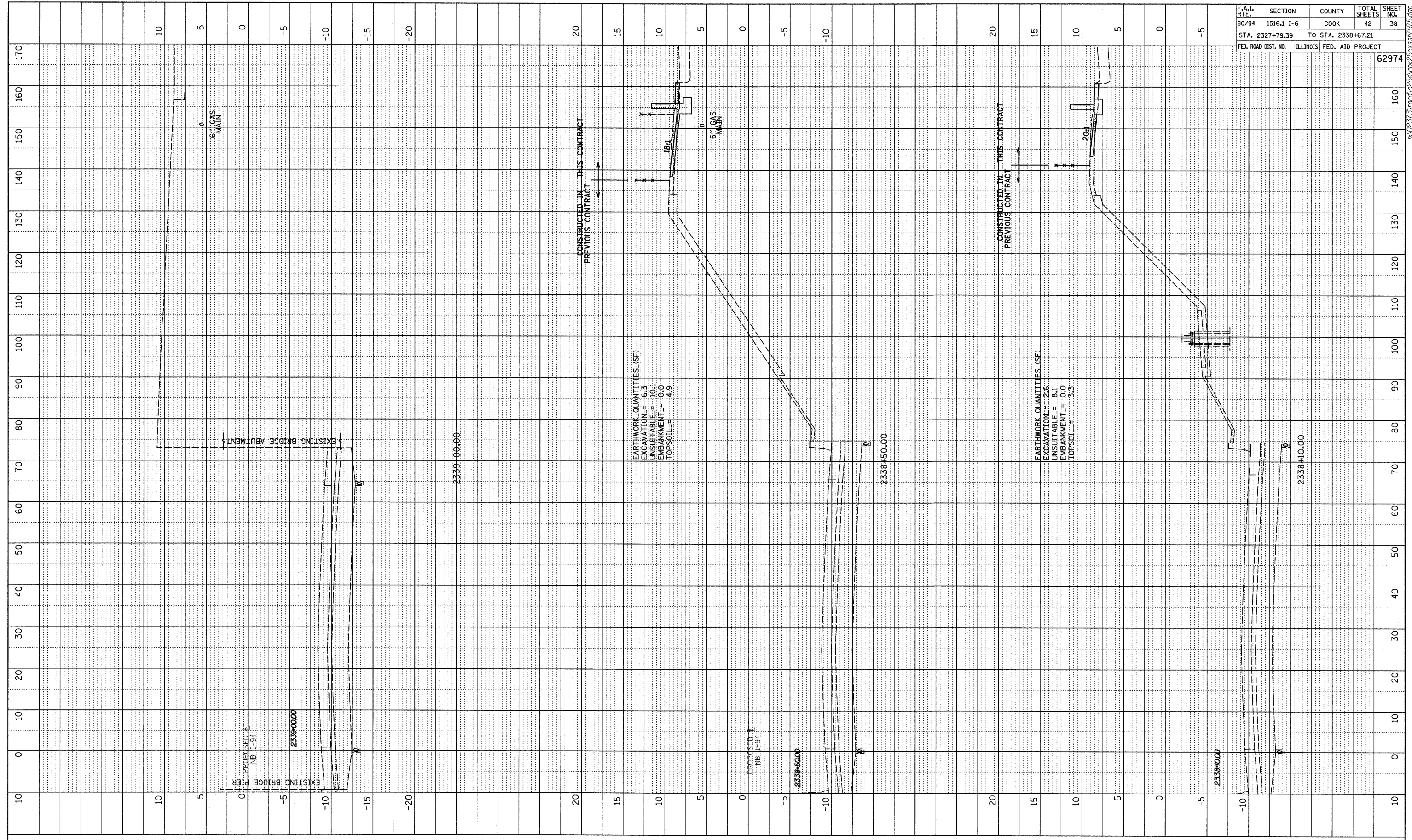
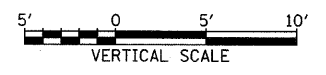
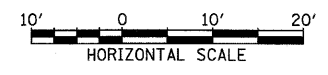


PROFILE	SURVEYED	BY	DATE
NOTE BOOK	GRADES CHECKED		
NO.	BY		
	STRUCTURE NOTATIONS	CHK'D	



F.A.I. RTE.	SECTION	COUNTY	TOTAL SHEETS	SHEET NO.
90/94	1516.1 I-6	COOK	42	38
STA. 2327+79.39		TO STA. 2338+67.21		
FED. ROAD DIST. NO.	ILLINOIS FED. AID PROJECT		62974	

TYLIN INTERNATIONAL



NB I-94 (DAN RYAN EXPRESSWAY)  
STA. 2338+10 TO STA. 2339+00