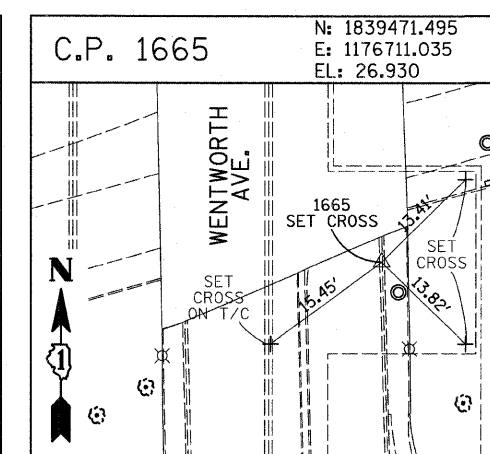
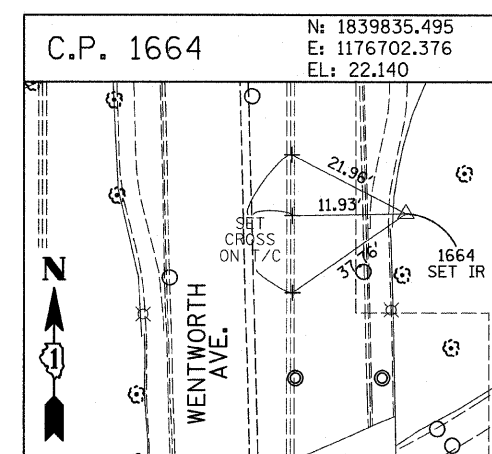
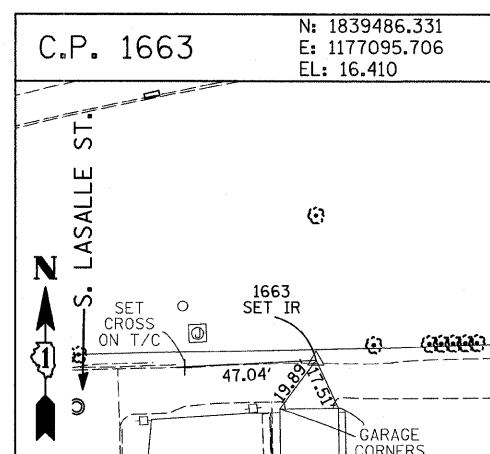
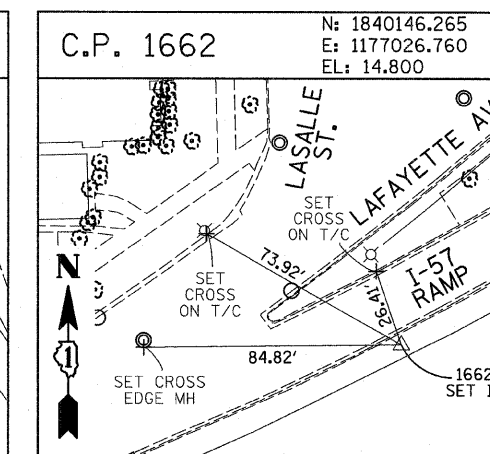
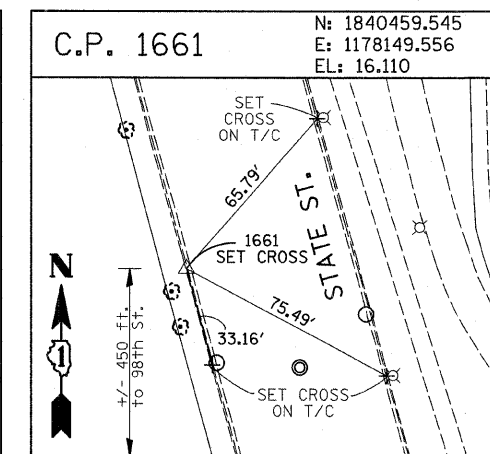
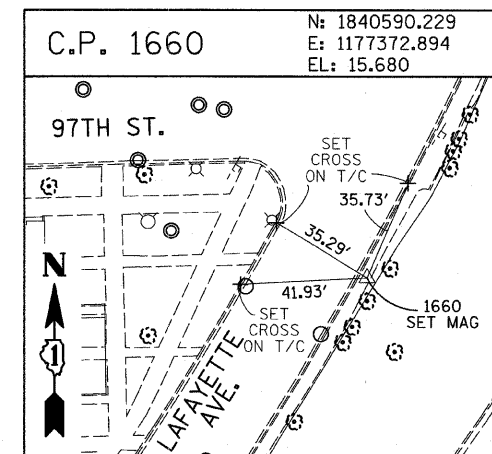
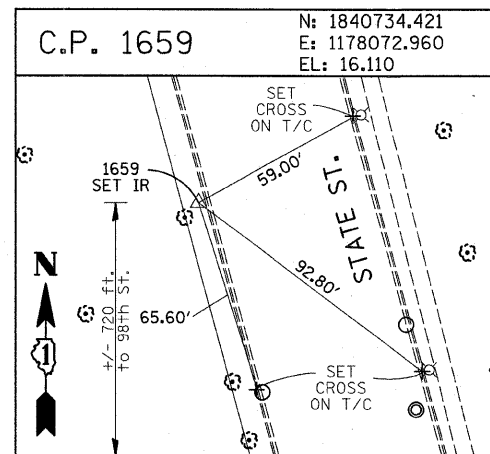
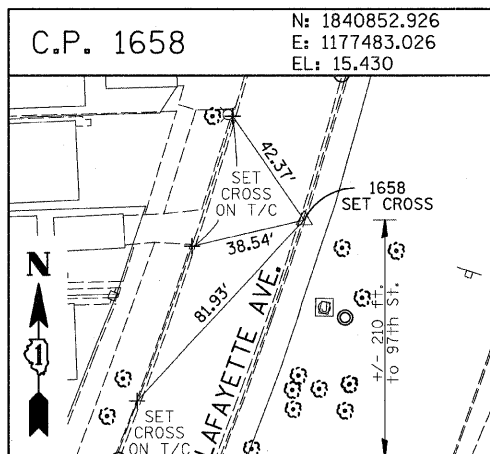
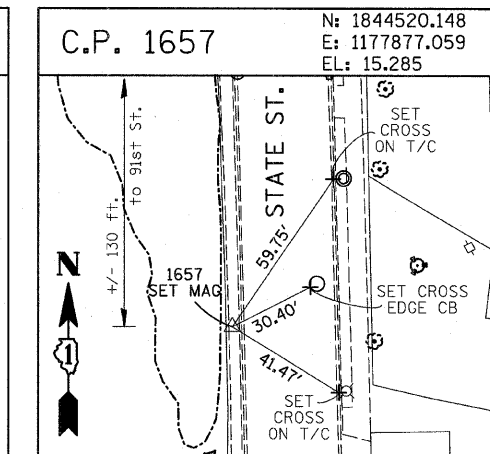
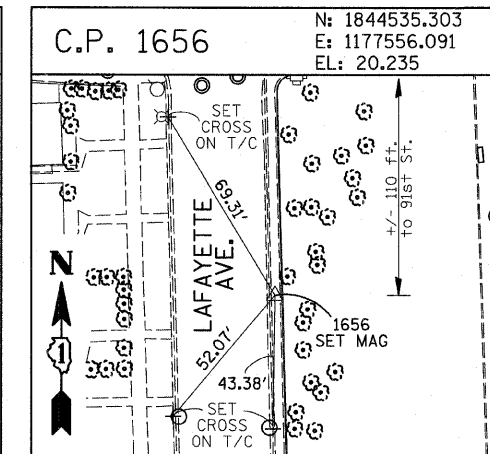
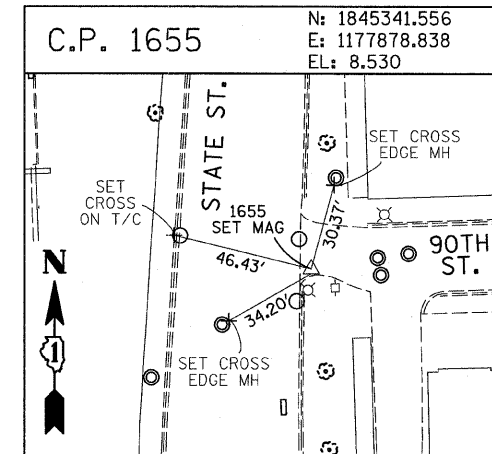
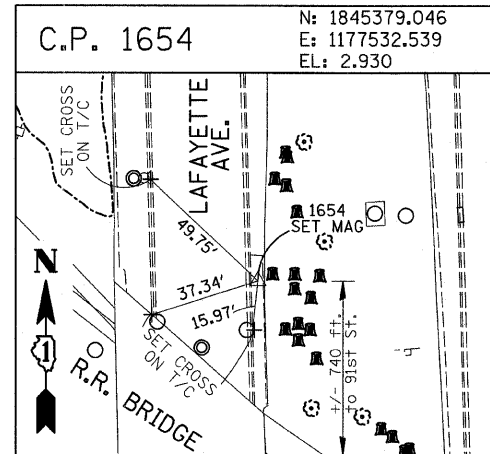
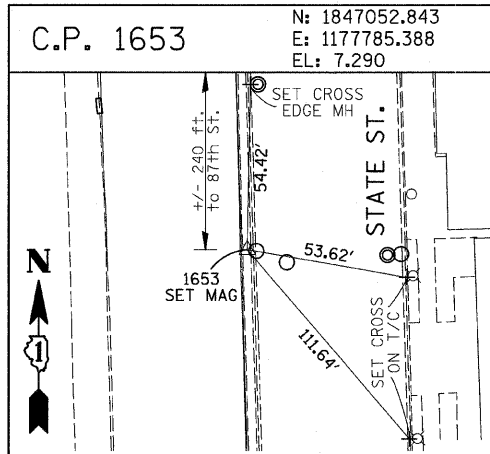
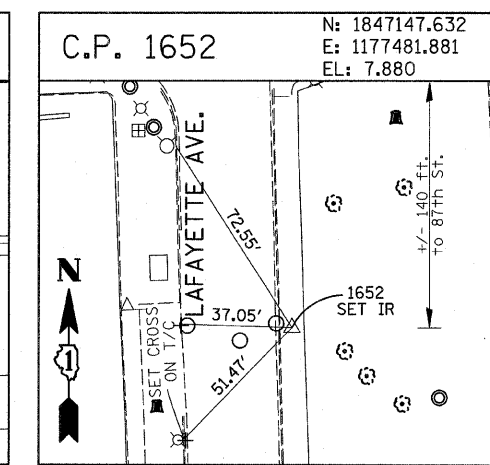
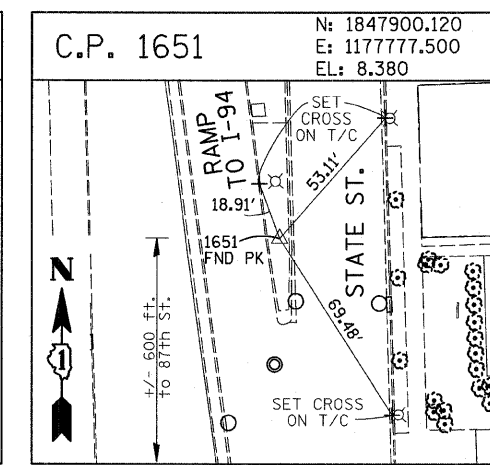
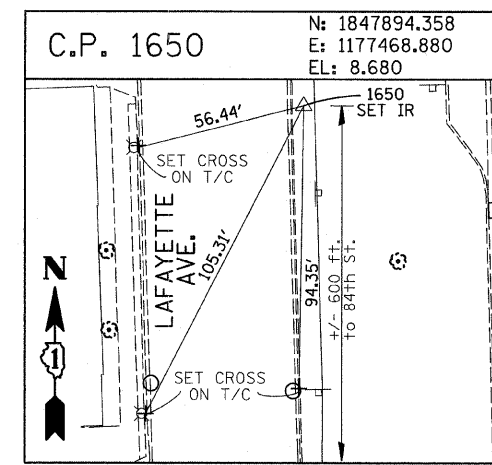
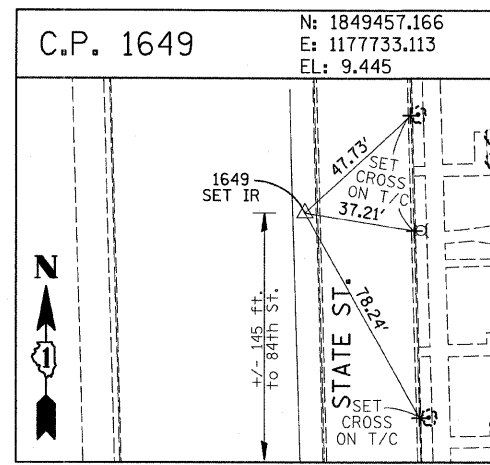
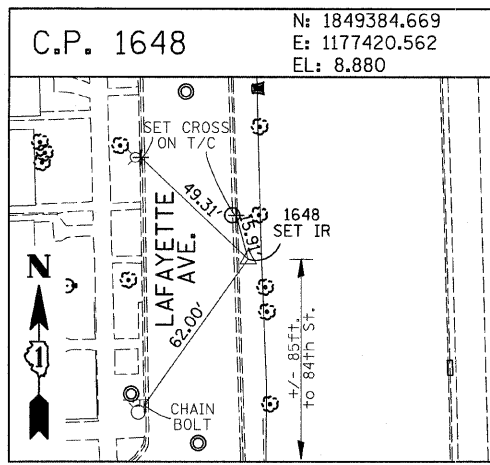


F.A.I. RTE.	SECTION	COUNTY	TOTAL SHEETS	SHEET NO.
94	1818 1-7	COOK	58	13
STA. 2339+42.81		TO STA. 2364+99.12		
FED. ROAD DIST. NO.		ILLINOIS FED. AID PROJECT		

62975



American Surveying Consultants, P.C.  
 1577 Plank Rd., Suite 100, Naperville, IL 60563  
 630-255-2221

REVISIONS	
NAME	DATE

ILLINOIS DEPARTMENT OF TRANSPORTATION  
 F.A.I. 94 (DAN RYAN EXPRESSWAY)  
 SURVEY TIES FOR CONTROL POINTS  
 SHEET 4 OF 7

SCALE: 1"=30'  
 DATE: FEBRUARY 13, 2009  
 DRAWN BY: GSP  
 CHECKED BY: MMW

3/19/2009 2:45:34 PM