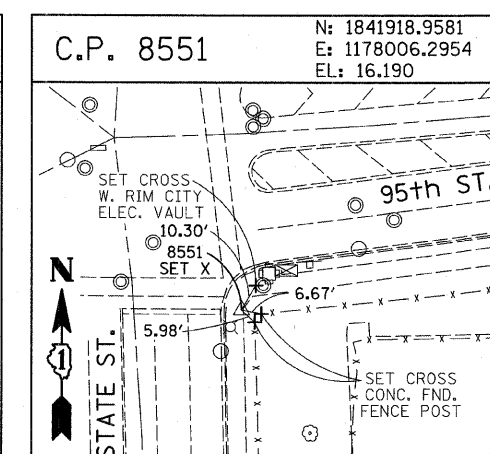
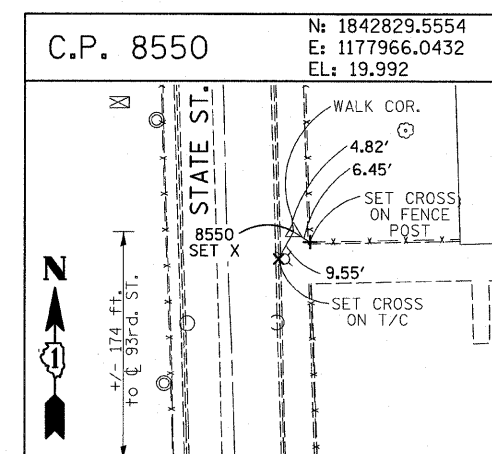
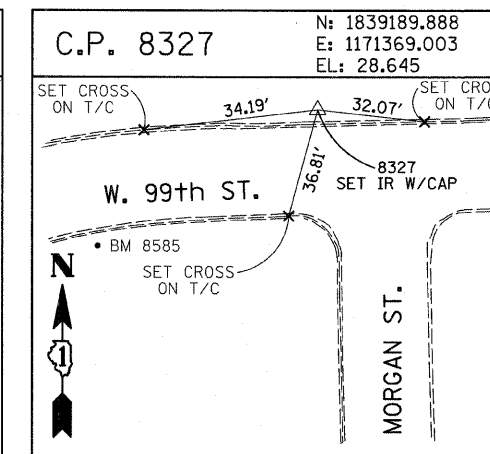
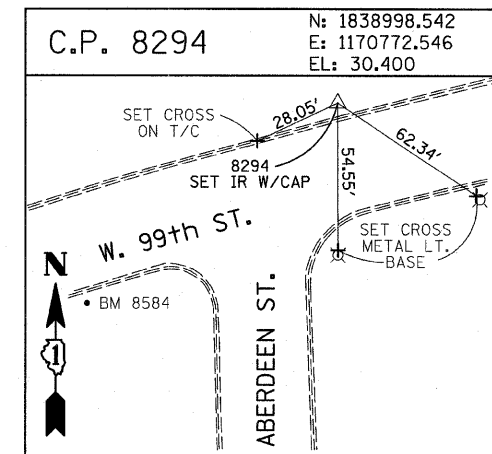
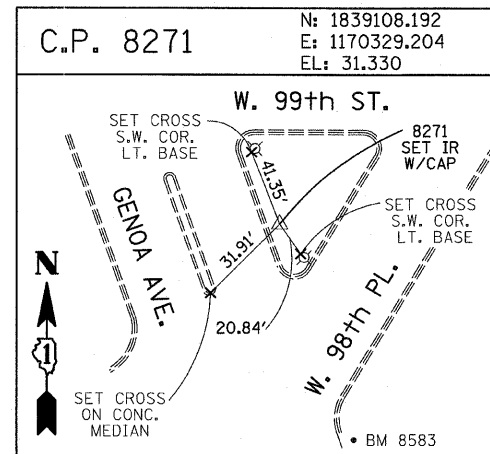
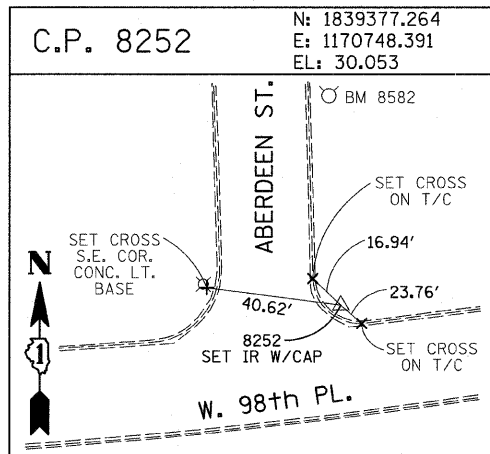
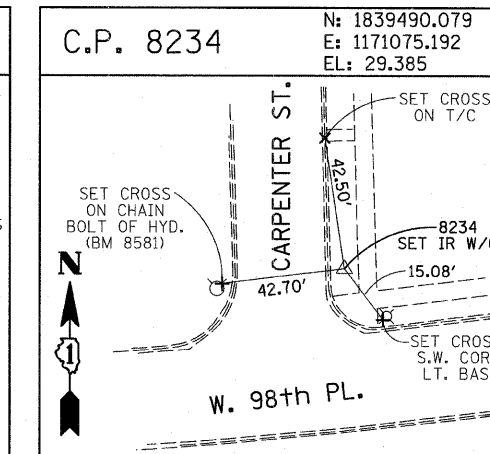
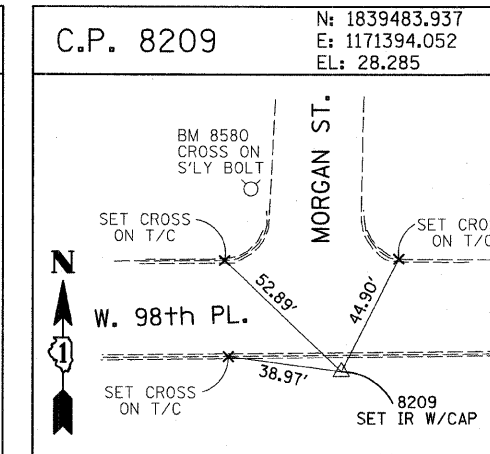
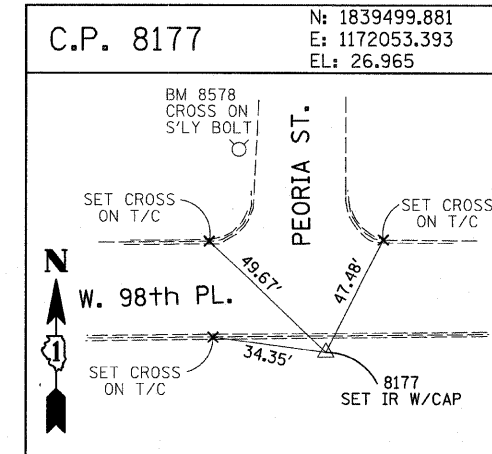
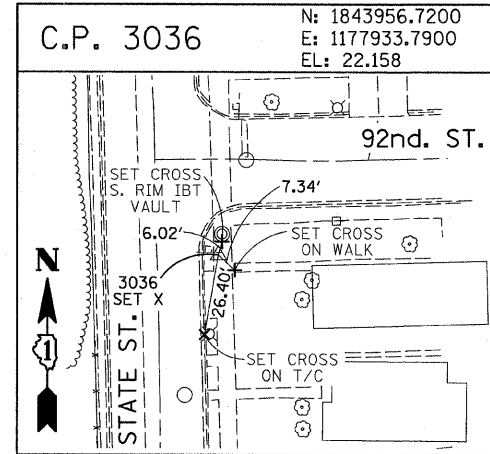
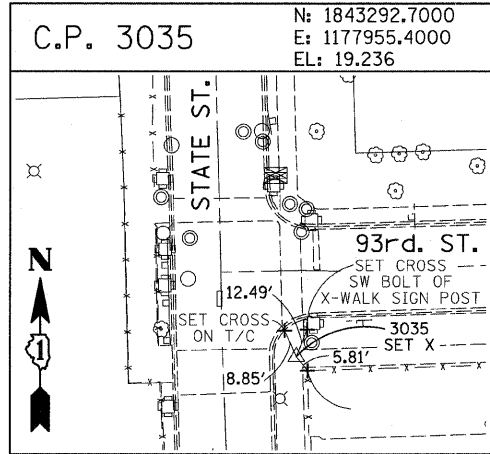
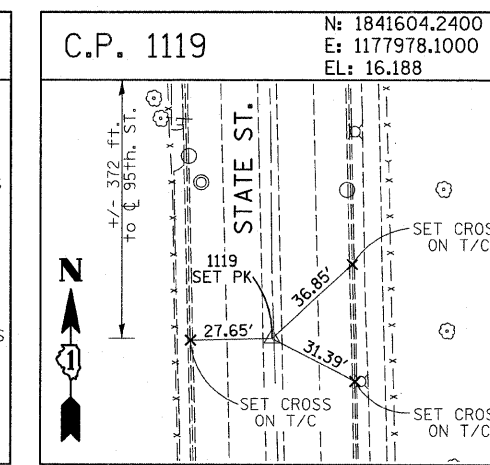
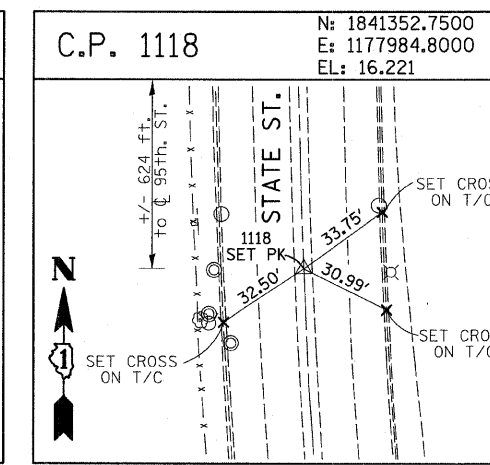
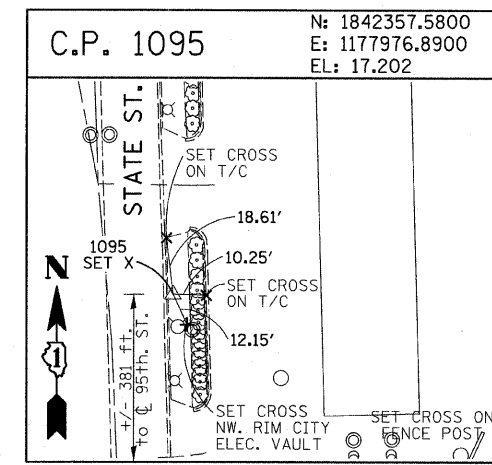
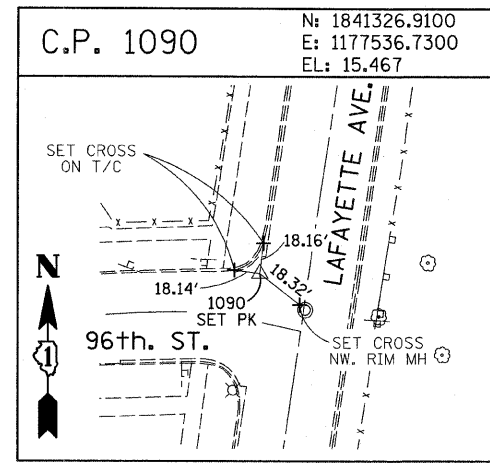
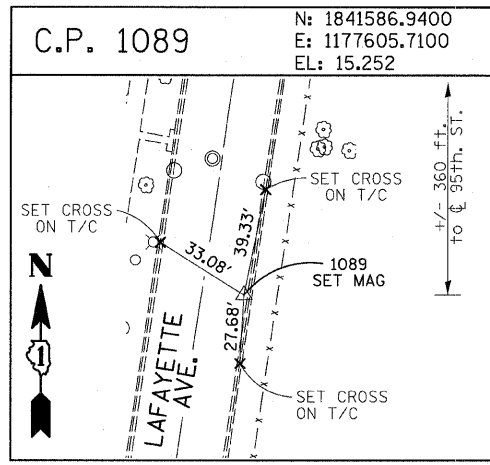


F.A.I. RTE.	SECTION	COUNTY	TOTAL SHEETS	SHEET NO.
94	1818 I-7	COOK	58	15
STA. 2339+42.81		TO STA. 2364+99.12		
FED. ROAD DIST. NO.		ILLINOIS	FED. AID PROJECT	
62975				



REVISIONS	
NAME	DATE

ILLINOIS DEPARTMENT OF TRANSPORTATION
 F.A.I. 94 (DAN RYAN EXPRESSWAY)
 SURVEY TIES FOR CONTROL POINTS
 SHEET 6 OF 7

SCALE: 1"=30'
 DATE: FEBRUARY 13, 2009
 DRAWN BY: GSP
 CHECKED BY: MMW

3/19/2009 2:43:38 PM P:\0237\3\road\625\1\2516103.dwg