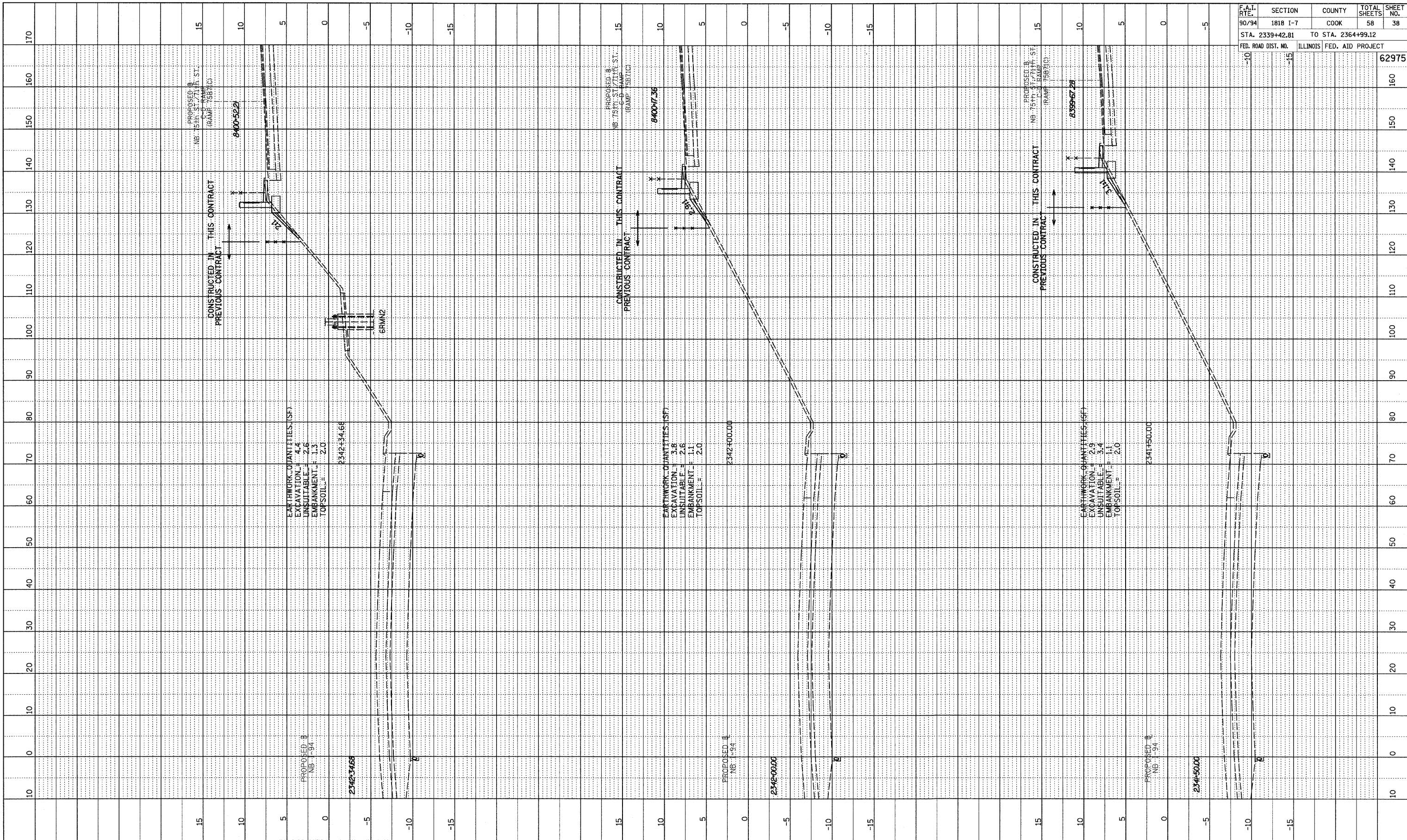
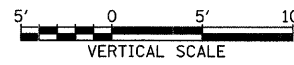


PROFILE SURVEYED BY DATE
 CHECKED BY
 NOTE BOOK NO. NOTED
 STRUCTURE NOTATIONS CIRD



F.A.I. RTE.	SECTION	COUNTY	TOTAL SHEETS	SHEET NO.
90/94	1818 I-7	COOK	58	38
STA. 2339+42.81		TO STA. 2364+99.12		
FED. ROAD DIST. NO.	ILLINOIS FED. AID PROJECT			62975

TYLINT INTERNATIONAL



NB I-94 (DAN RYAN EXPRESSWAY)
 STA. 2341+50 TO STA. 2342+34.68

3/19/2009 2:29:40 PM PA02373-ROAD-254-94M254-885714.DWG