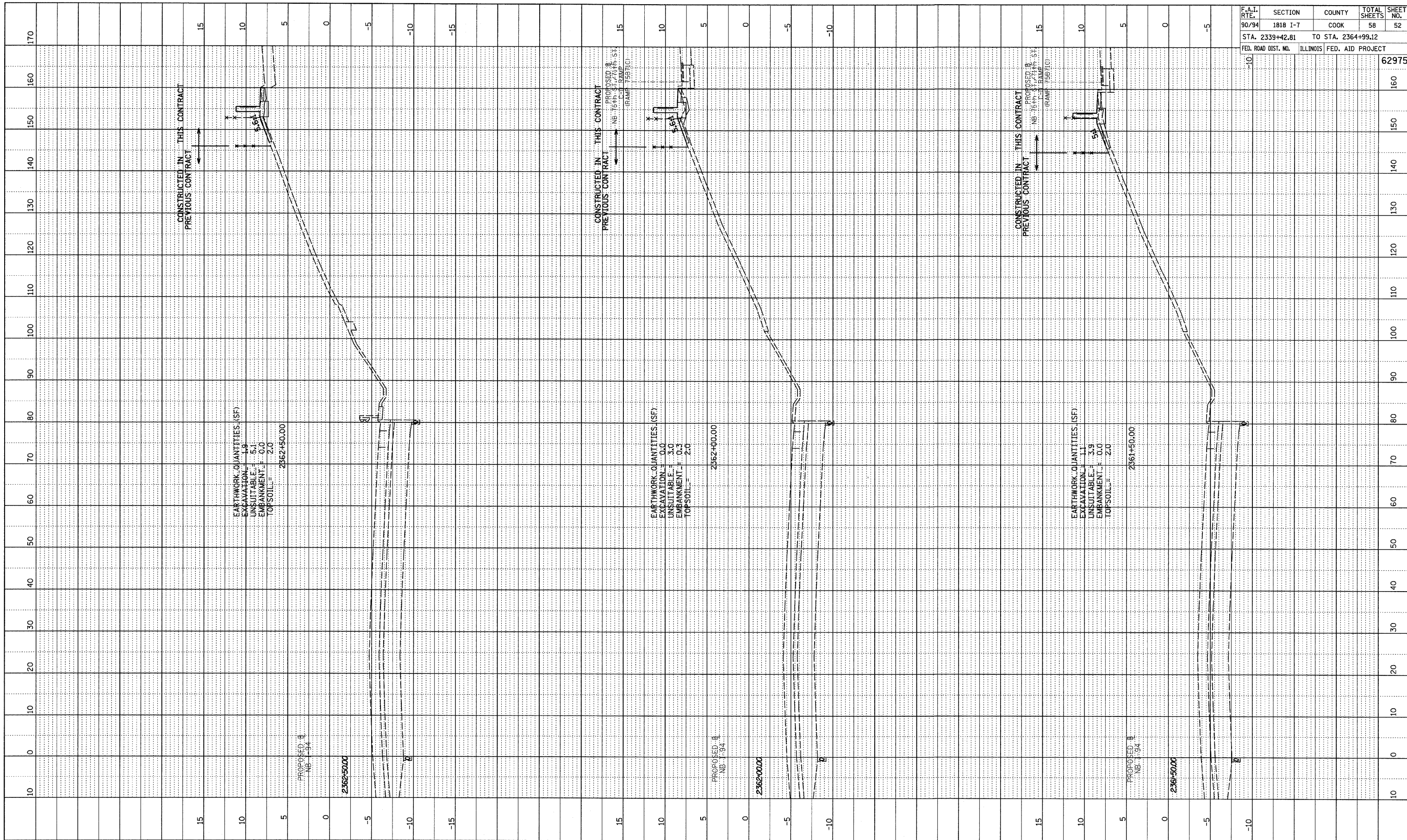
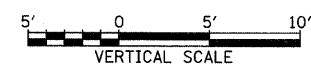
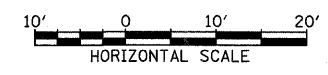


PROFILE SURVEYED BY: DATE:
 PLOTTED CHECKED
 NOTE BOOK NO. BLK. NOTED
 STRUCTURE NOTATIONS CRD



F.A.I. RTE.	SECTION	COUNTY	TOTAL SHEETS	SHEET NO.
90/94	1818 I-7	COOK	58	52
STA. 2339+42.81 TO STA. 2364+99.12				
FED. ROAD DIST. NO.		ILLINOIS FED. AID PROJECT		62975

TYLIN INTERNATIONAL



NB I-94 (DAN RYAN EXPRESSWAY)
 STA. 2361+50 TO STA. 2362+50

3/19/2009 2:29:14 PM P:\02313\Road\025\Fig\236150-236250.dgn