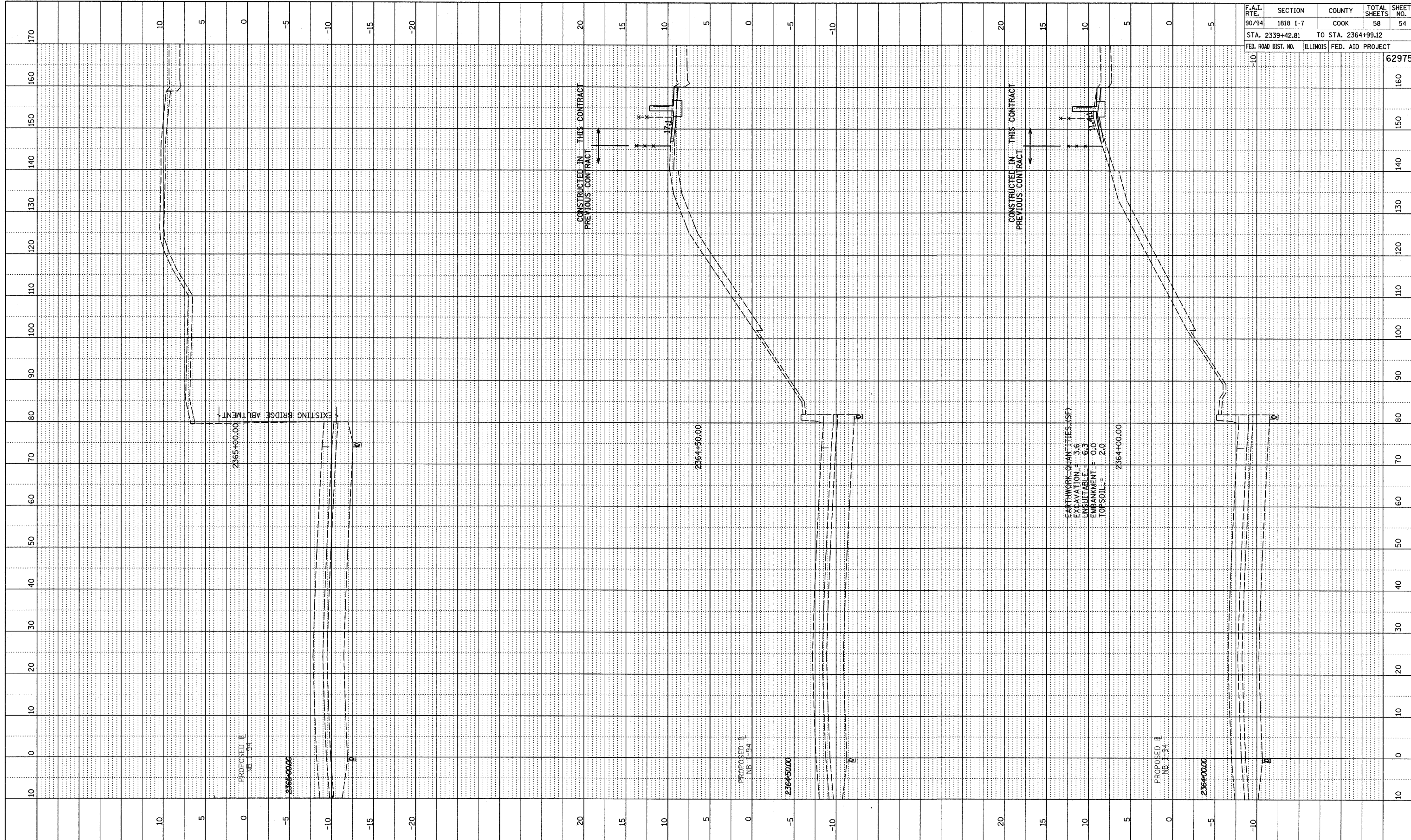
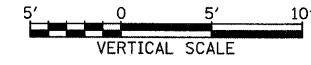


PROFILE	DATE
BY	
NOTED	
PLOTTED	
CHECKED	
DESIGNED	
STRUCTURE	
NOTATIONS	
CHD	



F.A.I. RTE.	SECTION	COUNTY	TOTAL SHEETS	SHEET NO.
90/94	1818 I-7	COOK	58	54
STA. 2339+42.81		TO STA. 2364+99.12		
FED. ROAD DIST. NO.	ILLINOIS FED. AID PROJECT		62975	

TYLIN INTERNATIONAL



NB I-94 (DAN RYAN EXPRESSWAY)
STA. 2364+00 TO STA. 2365+00

3/19/2009 2:29:19 PM P:\0237\3\Road\0237\Map\2364\2364-54.dwg