

**INDEX OF SHEETS**

FOR INDEX OF SHEETS, SEE SHEET NO. 2

DAN RYAN EXPRESSWAY:	ADT (2010)	DESIGN SPEED	POSTED SPEED
SB I-94 (DAN RYAN)	140,500	60 MPH	55 MPH
SB 87TH STREET ENTRANCE RAMP	13,400	45 MPH	40 MPH
SB 95TH STREET EXIT RAMP	11,900	45 MPH	40 MPH

CROSS STREETS AND FRONTAGE ROADS:	ADT	POSTED SPEED
87TH STREET	24,900	30 MPH
SOUTH LAFAYETTE AVENUE	6,800	30 MPH

**DESCRIPTION OF PROJECT**

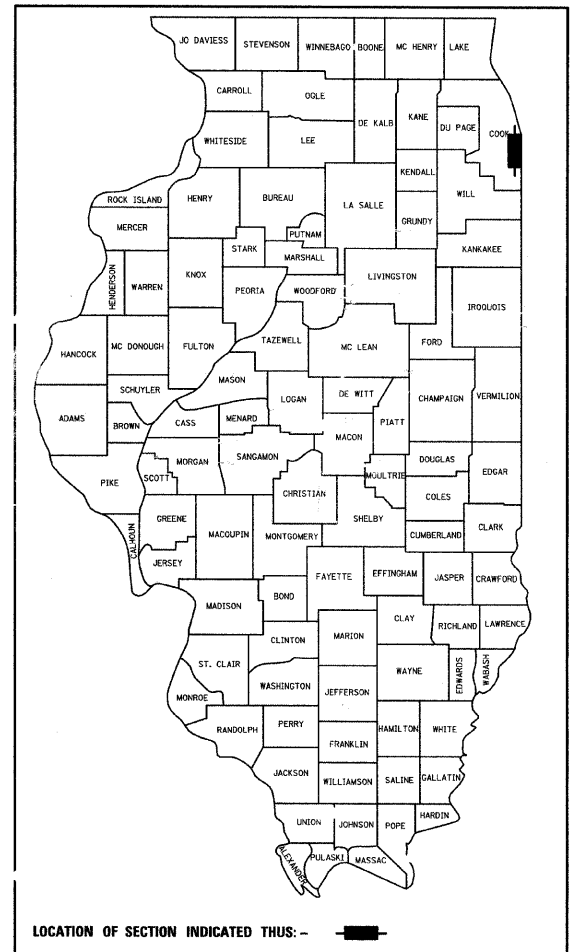
CONSTRUCTION OF FLUTED KNEE WALLS AND FLUTED PARAPET ON EXISTING RETAINING WALL LOCATED WITHIN THE PROJECT LIMITS.

**STATE OF ILLINOIS  
DEPARTMENT OF TRANSPORTATION  
DIVISION OF HIGHWAYS**

**PROPOSED HIGHWAY PLANS**

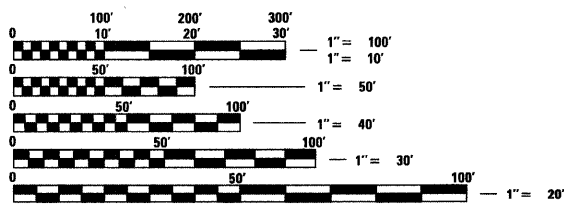
**F.A.I. ROUTE 94 (DAN RYAN EXPRESSWAY)  
SECTION (1516.1 & 1717) I-10  
FLUTED KNEE WALL CONSTRUCTION ALONG LAFAYETTE AVENUE  
FROM 94TH STREET TO 88TH STREET  
COOK COUNTY  
C-91-236-05**

F.A.I. RTE.	SECTION	COUNTY	TOTAL SHEETS	SHEET NO.
94	1516.1&1717 I-10	COOK	44	1
FED. ROAD DIST. NO. ILLINOIS FED. AID PROJECT			D-91-236-05 62978	



LOCATION OF SECTION INDICATED THUS: - [Symbol] -

**PROJECT LOCATED IN THE CITY OF CHICAGO**



FULL SIZE PLANS HAVE BEEN PREPARED USING STANDARD ENGINEERING SCALES; REDUCED SIZED PLANS WILL NOT CONFORM TO STANDARD SCALES. IN MAKING MEASUREMENTS ON REDUCED PLANS, THE ABOVE SCALES MAY BE USED

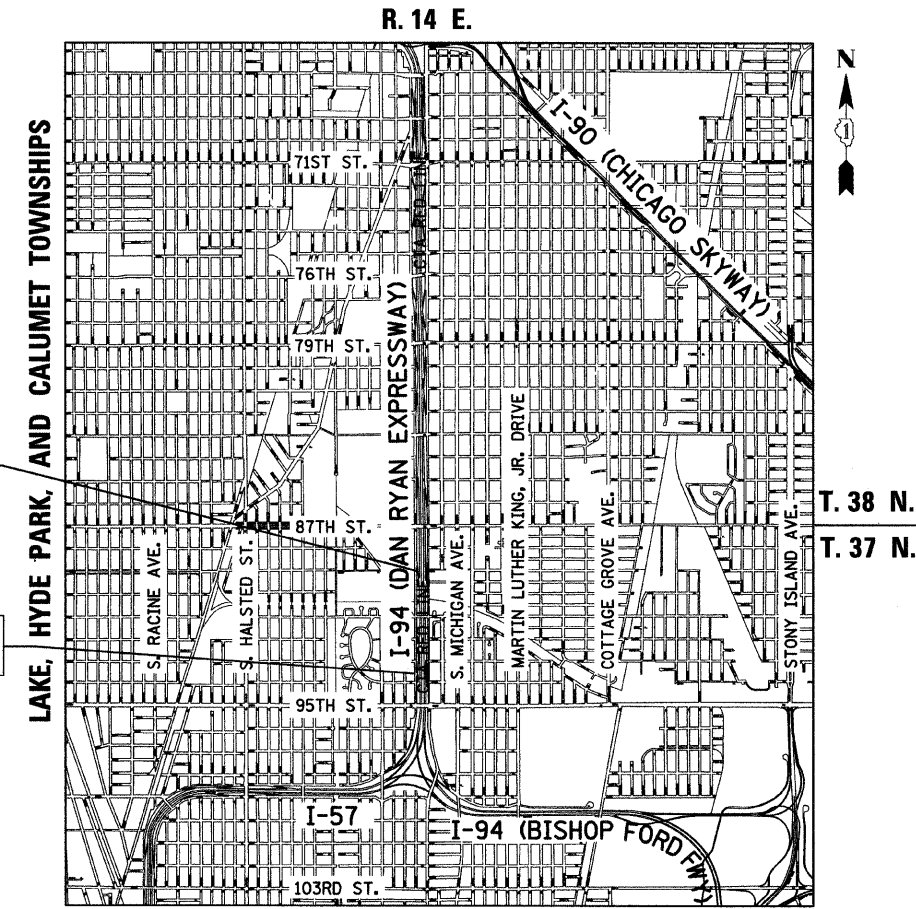
**DIGGER:**  
CHICAGO UTILITY ALERT NETWORK  
(312) 744-7000

**CTA CONTACT:**  
DAVID HEARD,  
MANAGER, CONSTRUCTION  
MANAGEMENT OVERSIGHT  
(312) 681-3862

**CONTRACT NO. 62978**

F.A.I. 94 (RYAN) PROJECT LIMIT  
STA. 1248 + 12.50 (SB I-94)

F.A.I. 94 (RYAN) PROJECT LIMIT  
STA. 1216 + 84.45 (SB I-94)



**LOCATION MAP**

GROSS LENGTH OF PROJECT = 3128.1 FT. = 0.59 MI.  
NET LENGTH OF PROJECT = 3128.1 FT. = 0.59 MI.  
MAP SCALE: 1" = 1/2 MILE

**STATE OF ILLINOIS  
DEPARTMENT OF TRANSPORTATION  
DIVISION OF HIGHWAYS**

SUBMITTED JANUARY 8, 2009  
Diann M. O'Keefe  
DEPUTY DIRECTOR OF HIGHWAYS, REGION ENGINEER  
June 26, 2009  
Charles J. Ingersoll  
ENGINEER OF DESIGN AND ENVIRONMENT  
June 26, 2009  
Christine M. Reed  
DIRECTOR OF HIGHWAYS, CHIEF ENGINEER

**CONTRACT 26B**

Signed Dean A. Kirsling  
32957 REGISTERED PROFESSIONAL ENGINEER OF ILLINOIS  
Date 01-07-09  
Expires 11-30-2009



**TYLIN INTERNATIONAL**  
PRINTED BY THE AUTHORITY OF THE STATE OF ILLINOIS

DISTRICT ONE DESIGN / PROJECT MANAGER:  
BRIAN KUTTAB (847) 705 - 4431