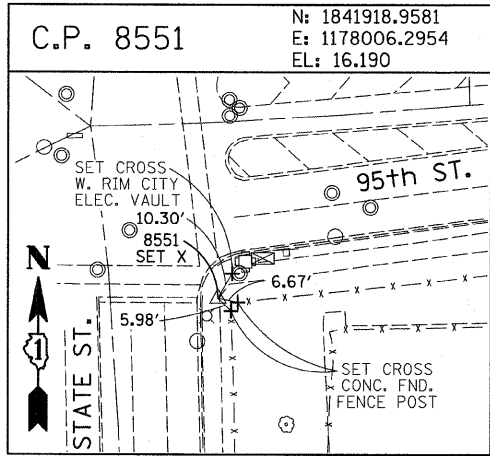
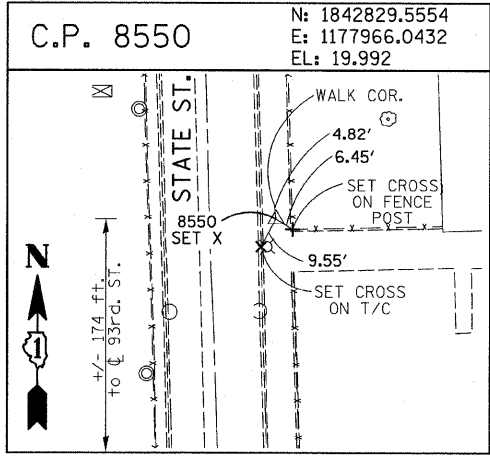
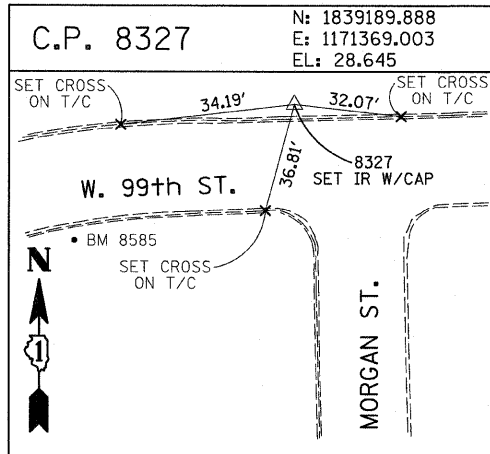
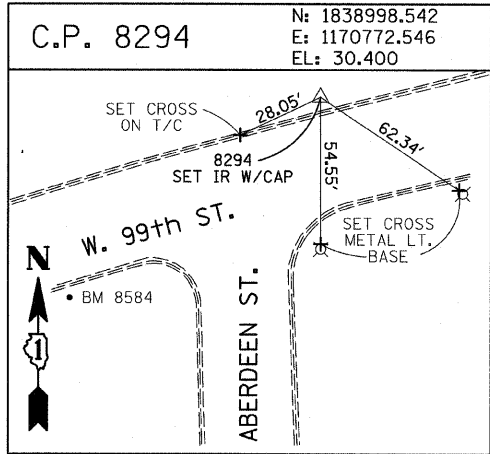
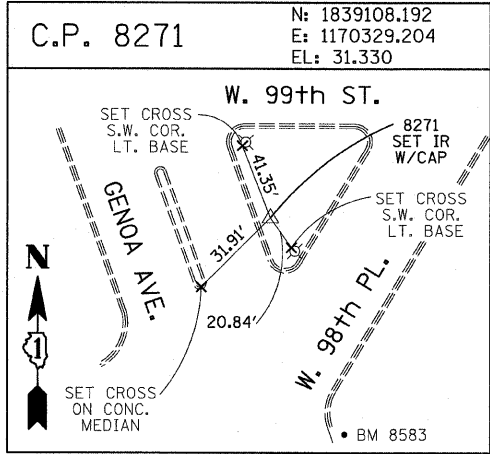
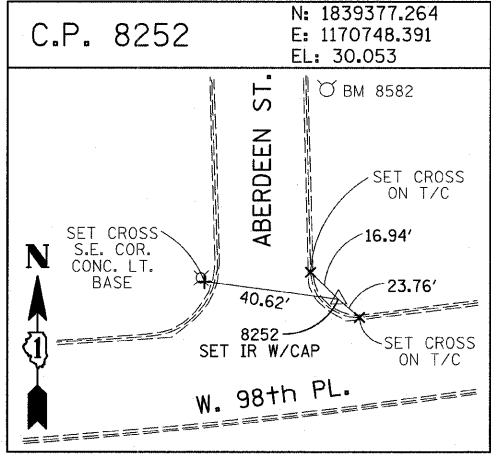
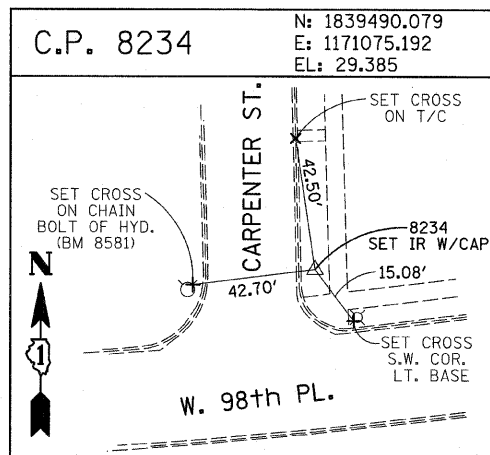
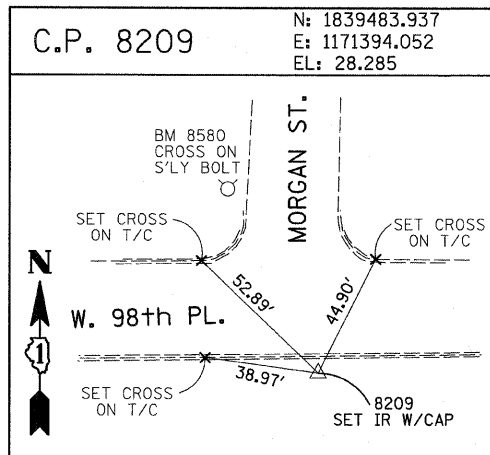
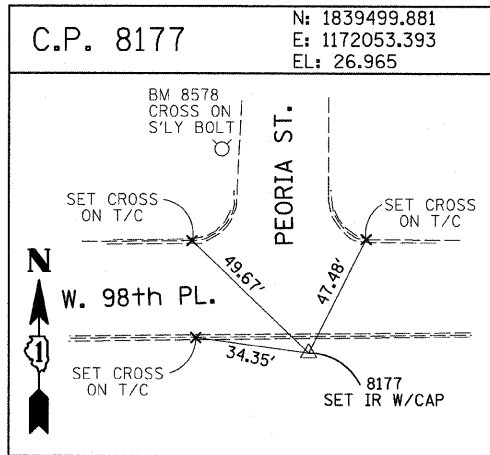
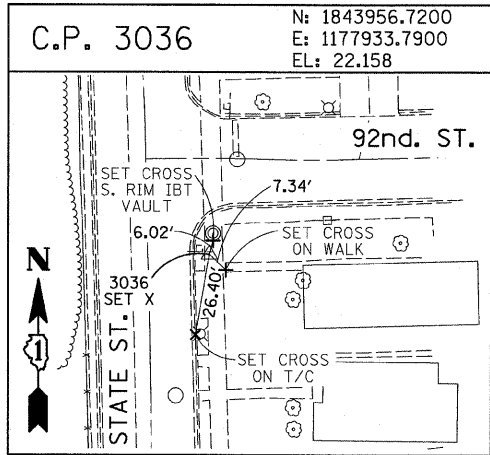
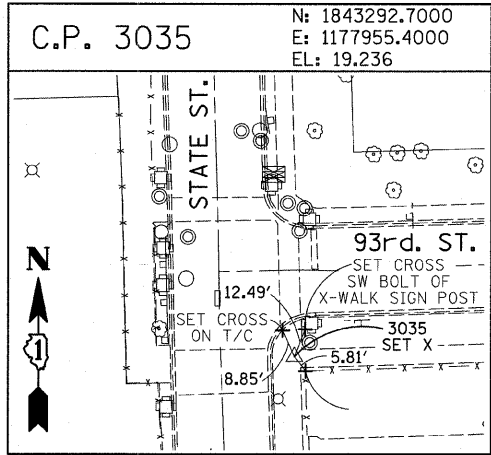
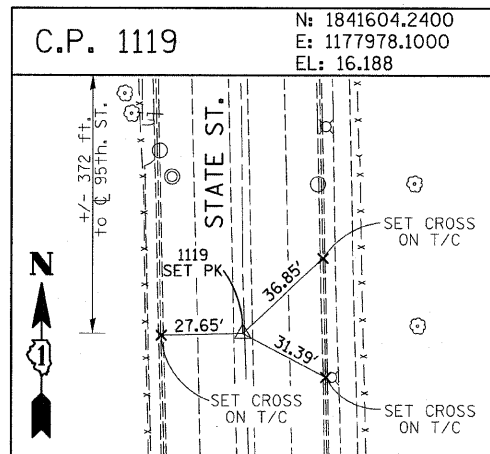
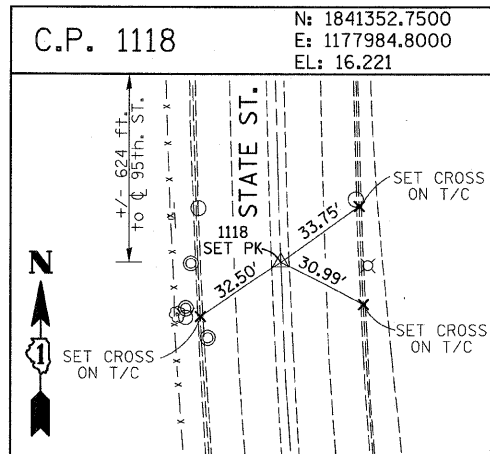
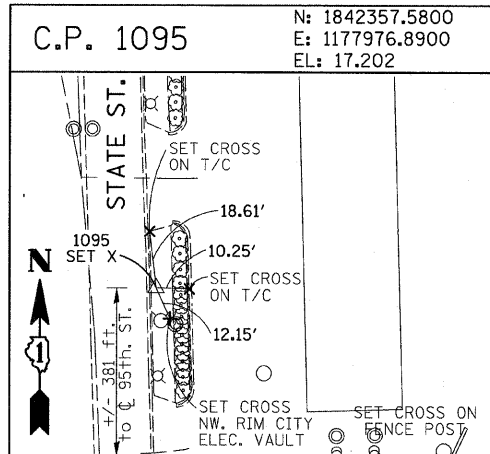
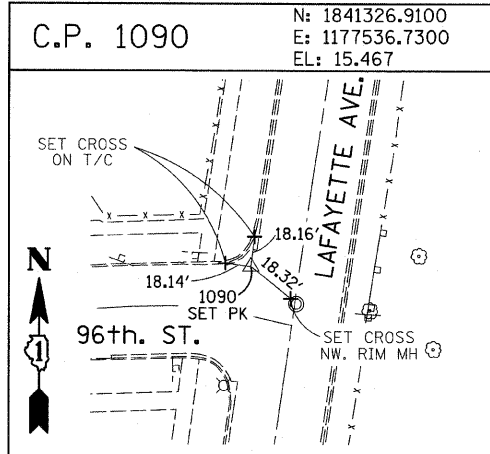
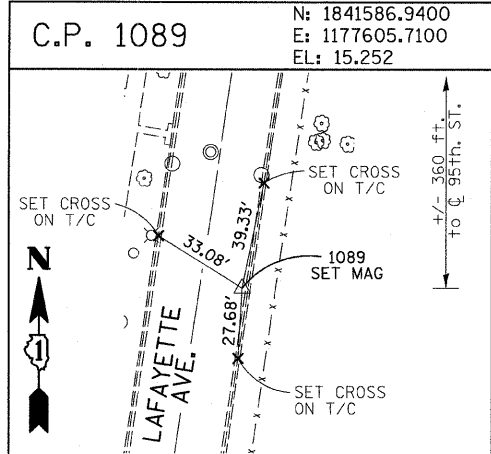


F.A.I. RTE.	SECTION	COUNTY	TOTAL SHEETS	SHEET NO.
94	*	COOK	44	15
STA. 1216+84.45		TO STA. 1248+12.50		
FED. ROAD DIST. NO.		ILLINOIS FED. AID PROJECT		
*(1516.1 & 1717 I-10)		62978		



American Surveying Consultants, P.C.
 1171 N. State St., Suite 100, Chicago, IL 60610
 (312) 467-0000

REVISIONS	
NAME	DATE

ILLINOIS DEPARTMENT OF TRANSPORTATION
 F.A.I. 94 (DAN RYAN EXPRESSWAY)
 SURVEY TIES FOR CONTROL POINTS
 SHEET 6 OF 7
 SCALE: 1"=30'
 DATE: JANUARY 16, 2009
 DRAWN BY: GSP
 CHECKED BY: MMW

1/15/2009 11:40:36 AM