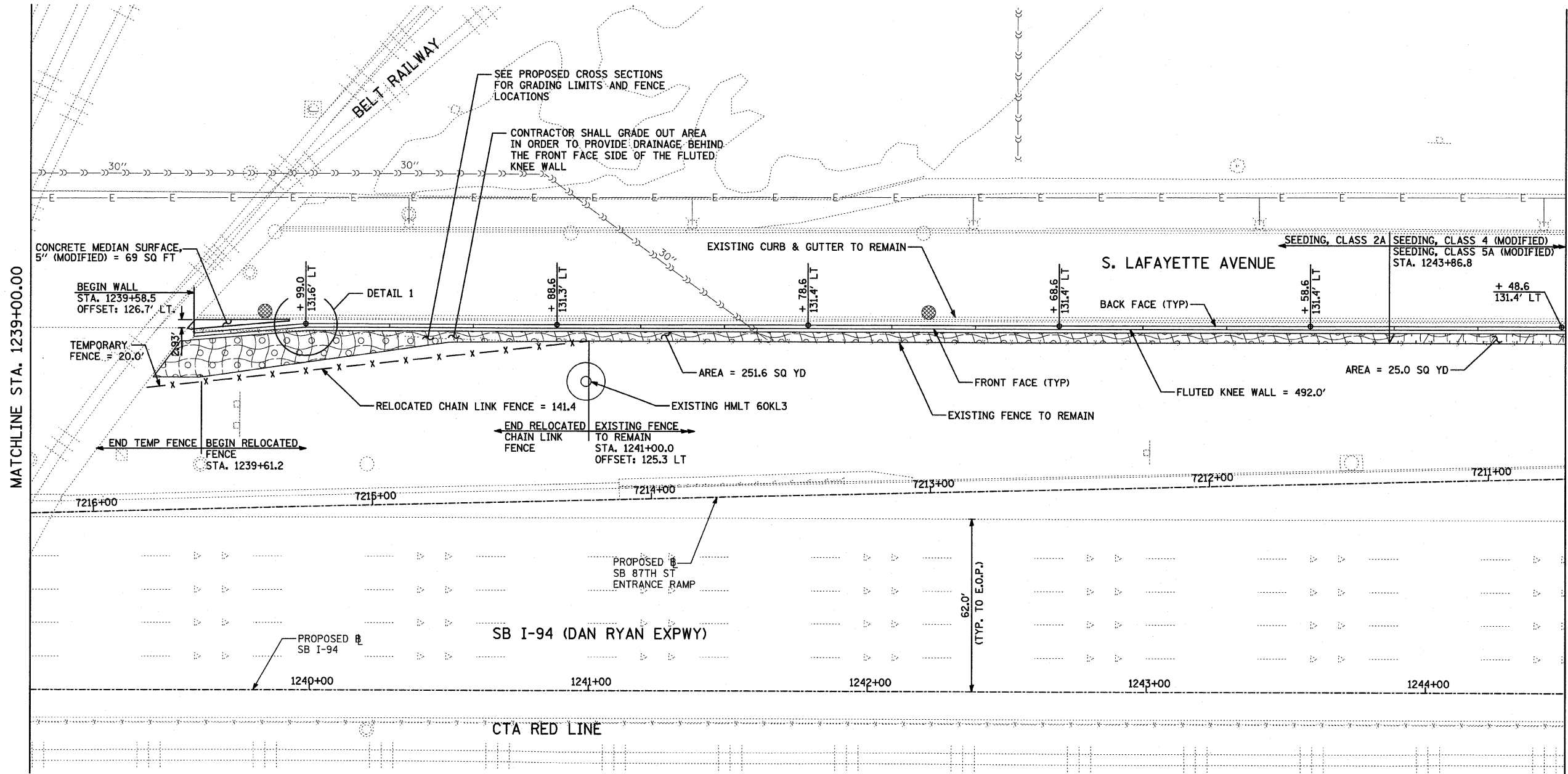
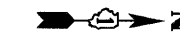
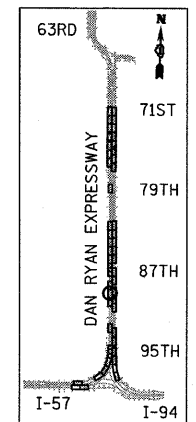


F.A.I. RTE.	SECTION	COUNTY	TOTAL SHEETS	SHEET NO.
94	*	COOK	44	22
STA. 1216+84.45		TO STA. 1248+12.50		
FED. ROAD DIST. NO.	ILLINOIS	FED. AID PROJECT		
*1516.1 & 1717 I-10		62978		

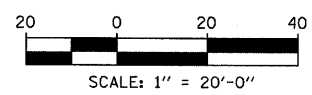


MATCHLINE STA. 1239+00.00

MATCHLINE STA. 1244+50.00



LOCATION MAP

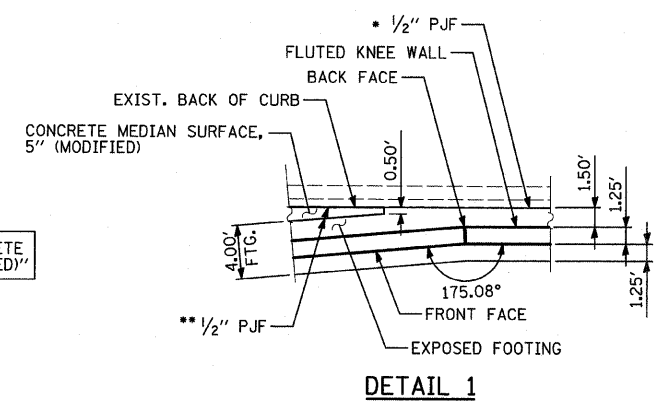


**LEGEND:**

- EROSION CONTROL BLANKET, SEEDING, CLASS 2A, NITROGEN, PHOSPHORUS, AND POTASSIUM FERTILIZER NUTRIENTS, TOPSOIL FURNISH AND PLACE, 4"
- EROSION CONTROL BLANKET, SEEDING, CLASS 2A, NITROGEN, PHOSPHORUS, AND POTASSIUM FERTILIZER NUTRIENTS, TOPSOIL FURNISH AND PLACE, 12"
- EROSION CONTROL BLANKET, SEEDING, CLASS 4 (MODIFIED), SEEDING, CLASS 5A (MODIFIED), TOPSOIL FURNISH AND PLACE, 12"
- INLET FILTER

**NOTES:**

1. STATION AND OFFSET CALLOUTS ALONG THE LENGTH OF EITHER FLUTED KNEE WALL OR FLUTED KNEE WALL, SPECIAL ARE TAKEN FROM THE BACK FACE SIDE AT PROPOSED EXPANSION JOINT LOCATIONS.
2. THE CONTRACTOR SHALL PROTECT AND USE CAUTION DURING CONSTRUCTION OPERATIONS AROUND ALL EXISTING PUBLIC OR PRIVATE UTILITY FACILITIES.



\* COST INCLUDED WITH "FLUTED KNEE WALL"

\*\* COST INCLUDED WITH "CONCRETE MEDIAN SURFACE, 5" (MODIFIED)"

**TYLIN INTERNATIONAL**

REVISIONS	
NAME	DATE

ILLINOIS DEPARTMENT OF TRANSPORTATION  
**F.A.I. 94 (DAN RYAN EXPRESSWAY)**  
**PROPOSED PLAN**  
**SB I-94 (I-94 DAN RYAN EXPWY)**  
**STA. 1239+00.00 TO STA. 1244+50.00**

SCALE: 1"=20'  
DATE: JANUARY 16, 2009  
DRAWN BY: AMB, MAF, TB  
CHECKED BY: TGB, MI

P:\02373\road\c26d\p06606705\02.dgn 1/15/2009 11:40:05 AM