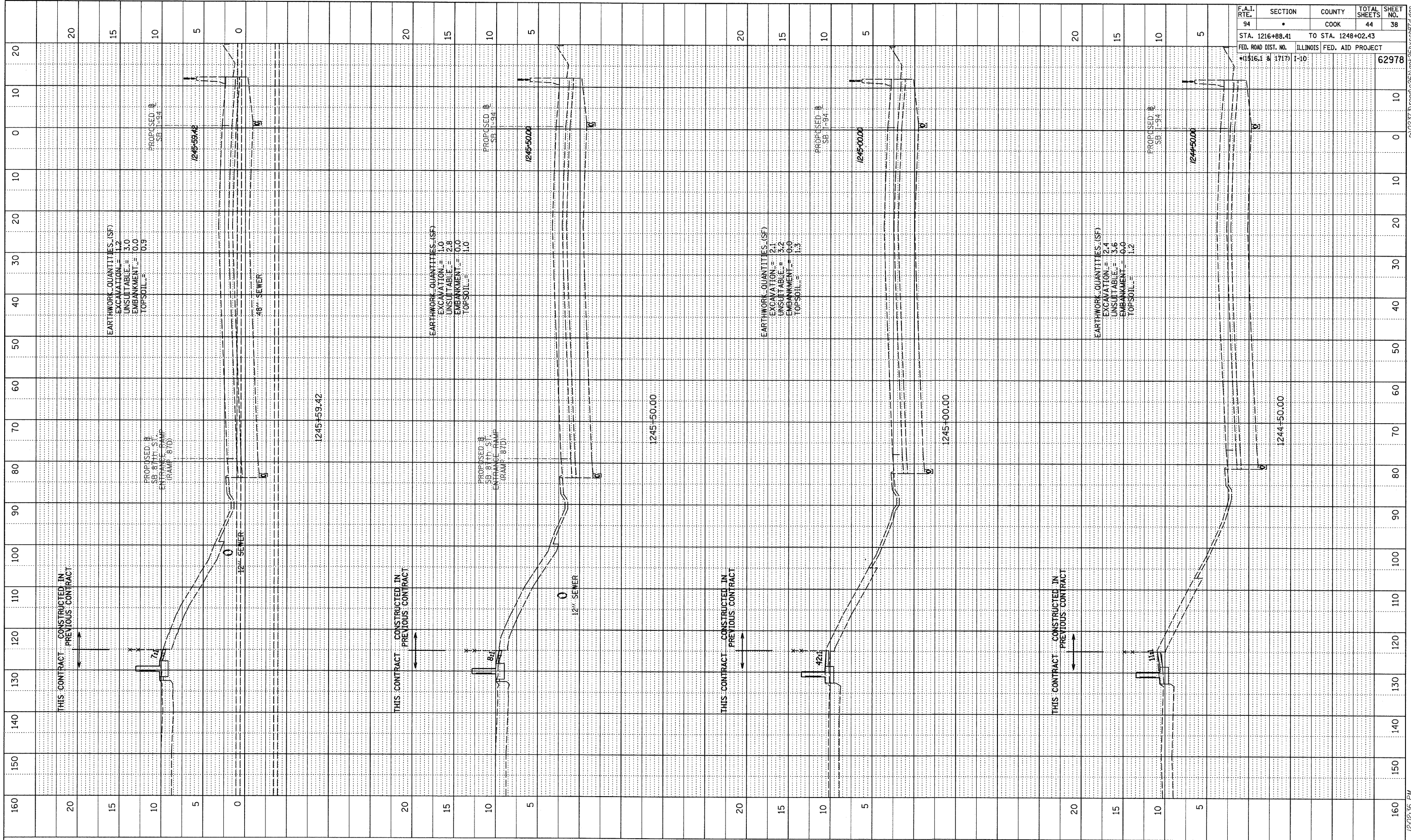
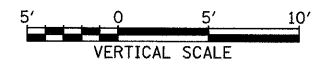
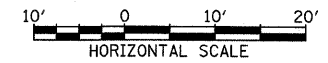


PROFILE	SURVEYED	BY	DATE
NOTE BOOK	PLOTTED		
NO.	CHECKED		
	BY		
	NO.		
	DATE		
	STRUCTURE		
	NOTATIONS		
	CHRD		



F.A.I. RTE.	SECTION	COUNTY	TOTAL SHEETS	SHEET NO.
94	*	COOK	44	38
STA. 1216+88.41 TO STA. 1248+02.43				
FED. ROAD DIST. NO. ILLINOIS		FED. AID PROJECT		
*(1516.1 & 1717) T-10		62978		

TYLIN INTERNATIONAL



SB I-94 (DAN RYAN EXPRESSWAY)
STA. 1244+50 TO STA. 1245+59.42

1/15/2009 12:22:35 PM P:\0237\3\road\266\pk266\ss187r.dgn