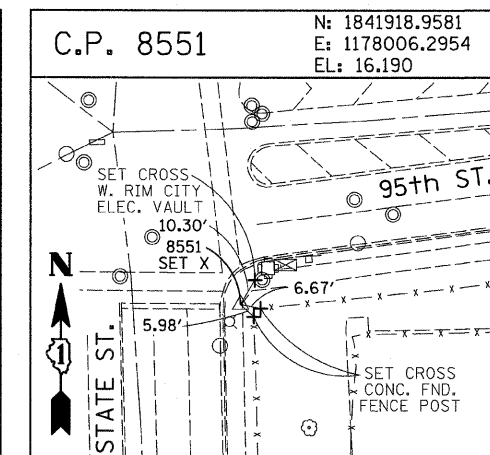
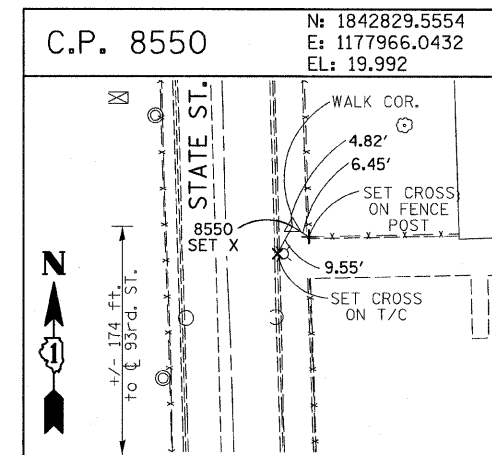
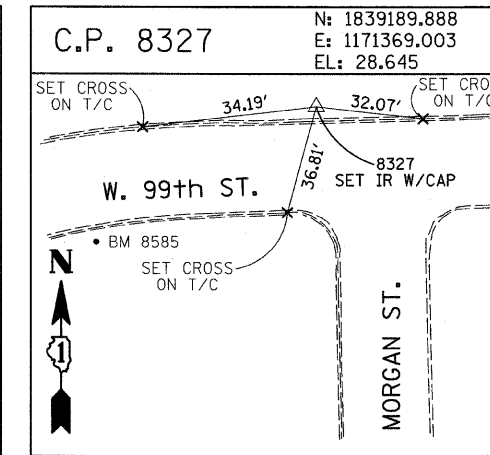
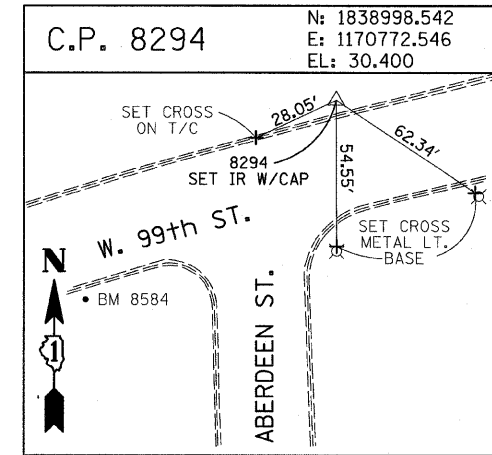
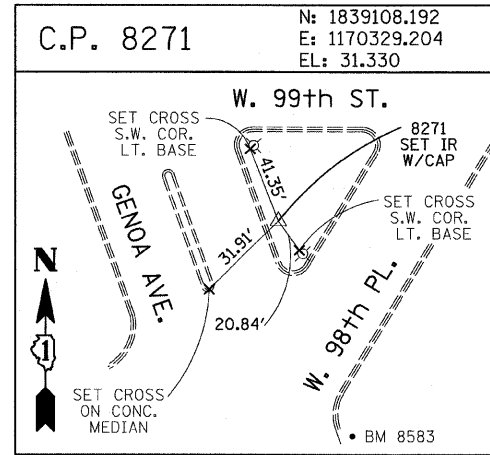
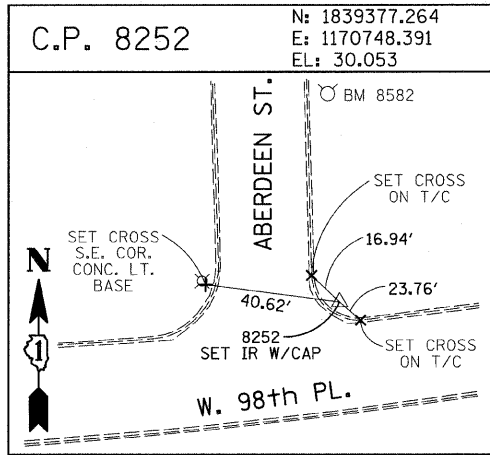
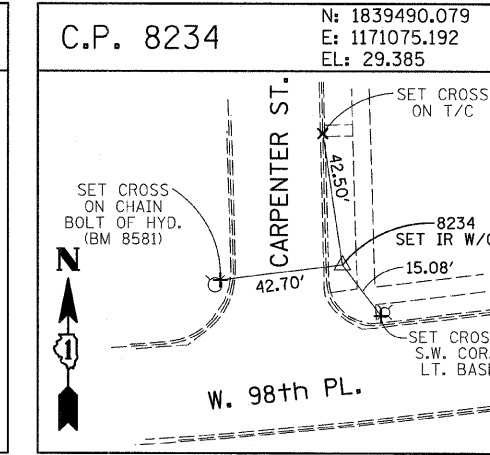
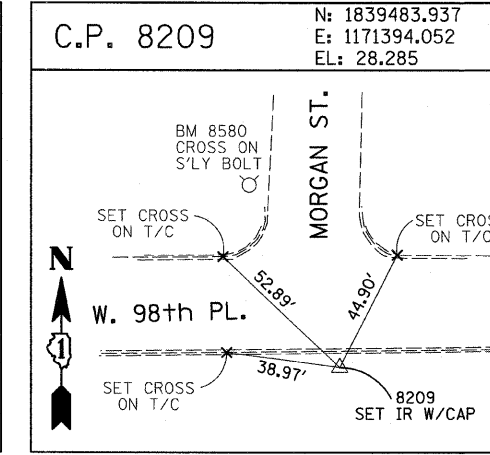
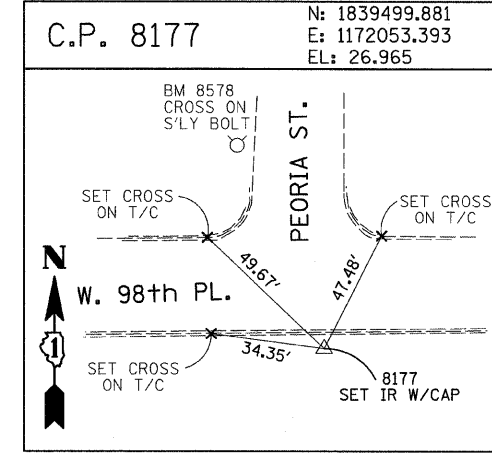
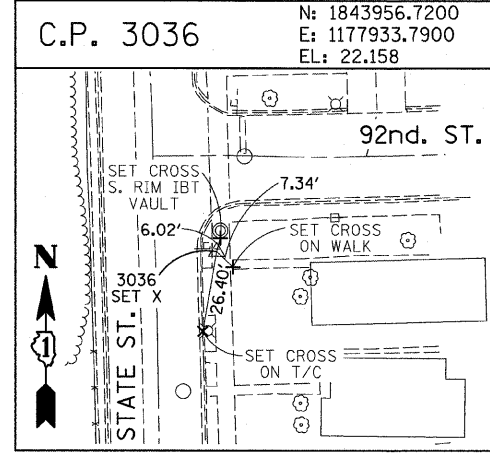
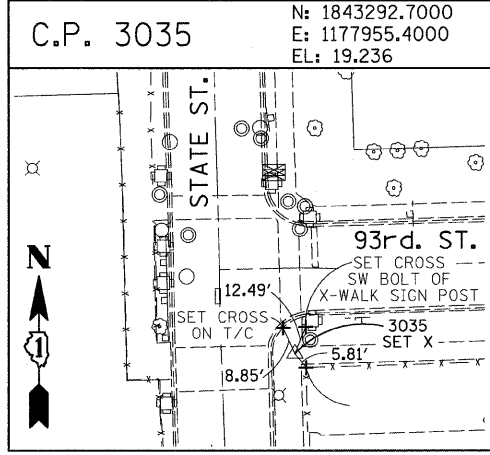
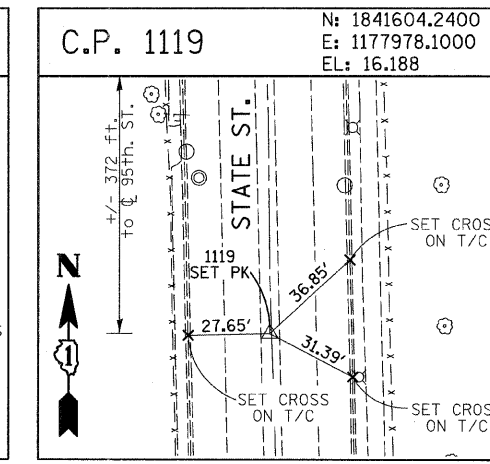
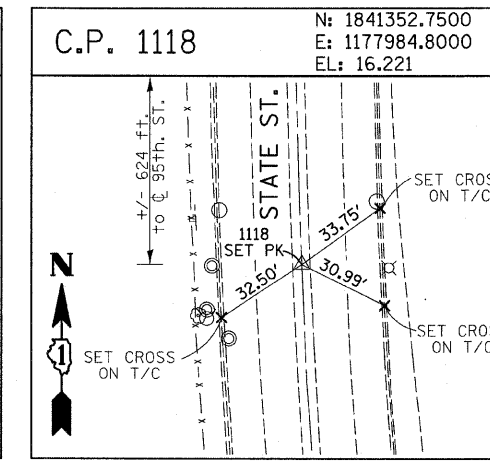
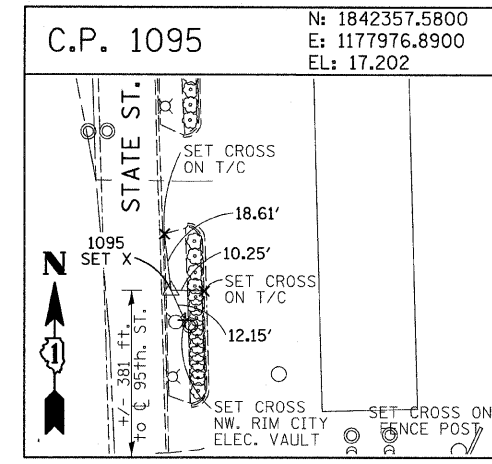
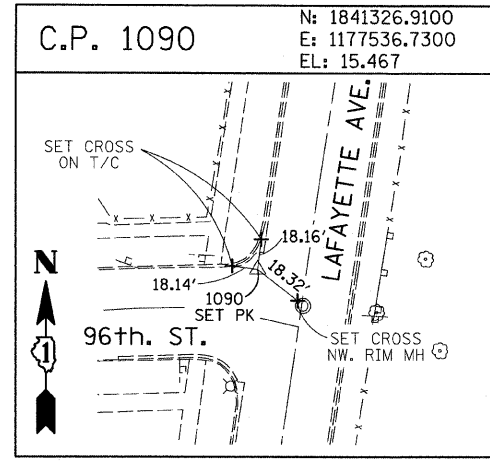
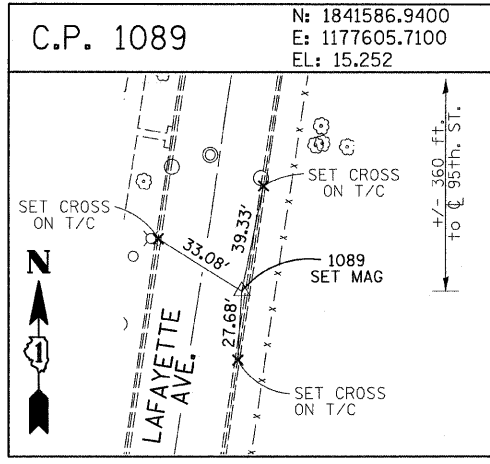


F.A.I. RTE.	SECTION	COUNTY	TOTAL SHEETS	SHEET NO.
94	1717 I-9	COOK	48	15
STA. 1273+74.31		TO STA. 1289+11.91		
FED. ROAD DIST. NO. ILLINOIS FED. AID PROJECT				
62980				



REVISIONS	
NAME	DATE

ILLINOIS DEPARTMENT OF TRANSPORTATION
 F.A.I. 94 (DAN RYAN EXPRESSWAY)
 SURVEY TIES FOR CONTROL POINTS
 SHEET 6 OF 7

SCALE: 1"=30'
 DATE: OCTOBER 17, 2008
 DRAWN BY: GSP
 CHECKED BY: MMW

10/16/2008 4:38:30 PM P:\0227\3v\road\269\126\6103\3b.dgn