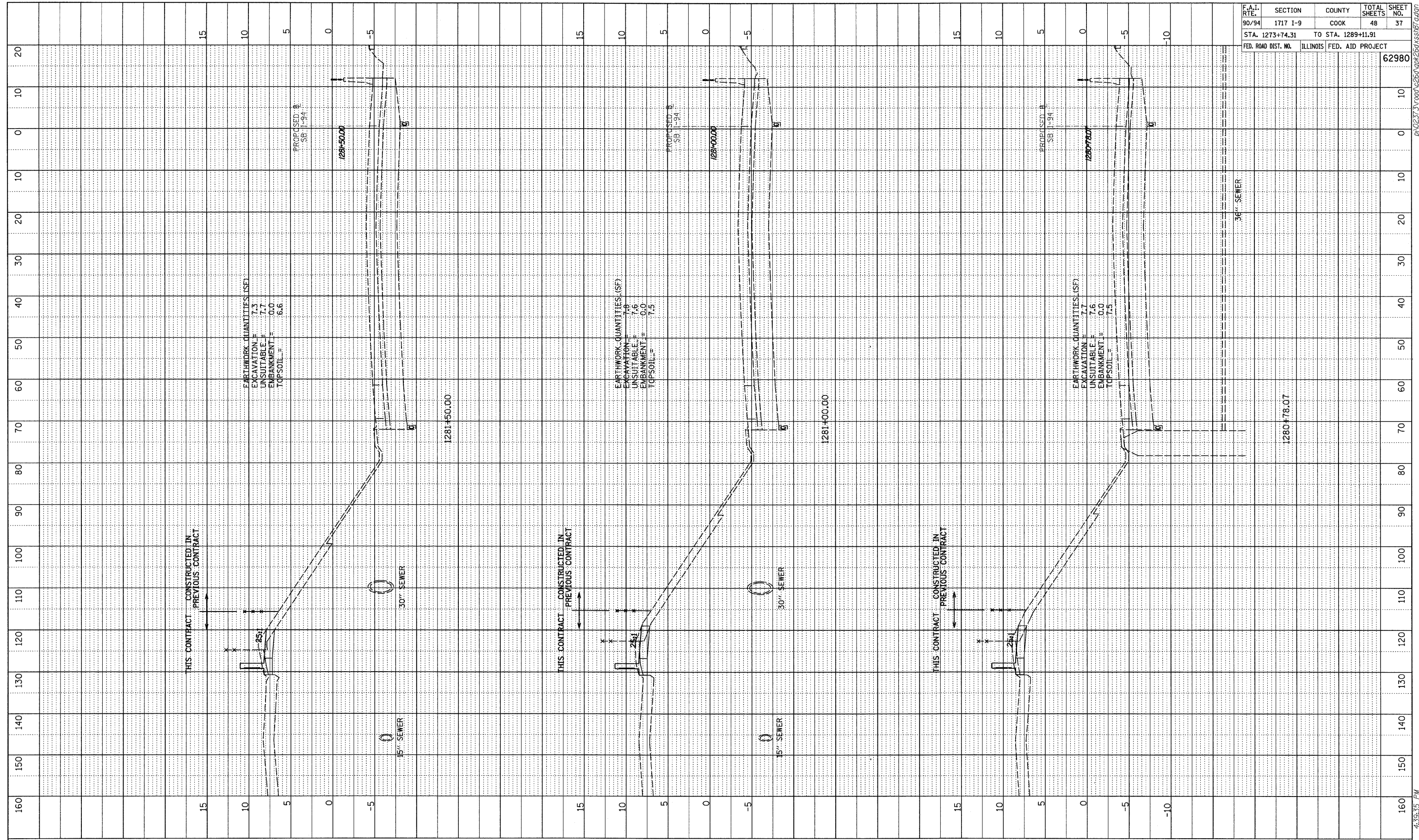
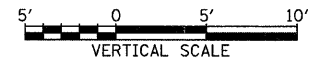
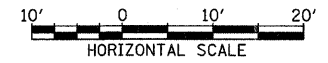


PROFILE SURVEYED BY DATE  
 NOTES CHECKED BY  
 NO. STRUCTURE INDICATING CHFD



F.A.I. RTE.	SECTION	COUNTY	TOTAL SHEETS	SHEET NO.
90/94	1717 I-9	COOK	48	37
STA. 1273+74.31	TO STA. 1289+11.91			
FED. ROAD DIST. NO.	ILLINOIS	FED. AID PROJECT		
			62980	

TYLIN INTERNATIONAL



SB I-94 (DAN RYAN EXPRESSWAY)  
 STA. 1280+78 TO STA. 1281+50

10/16/2008 4:35:35 PM P:\0237\3\road\260\gpk\661\kssi87.dwg