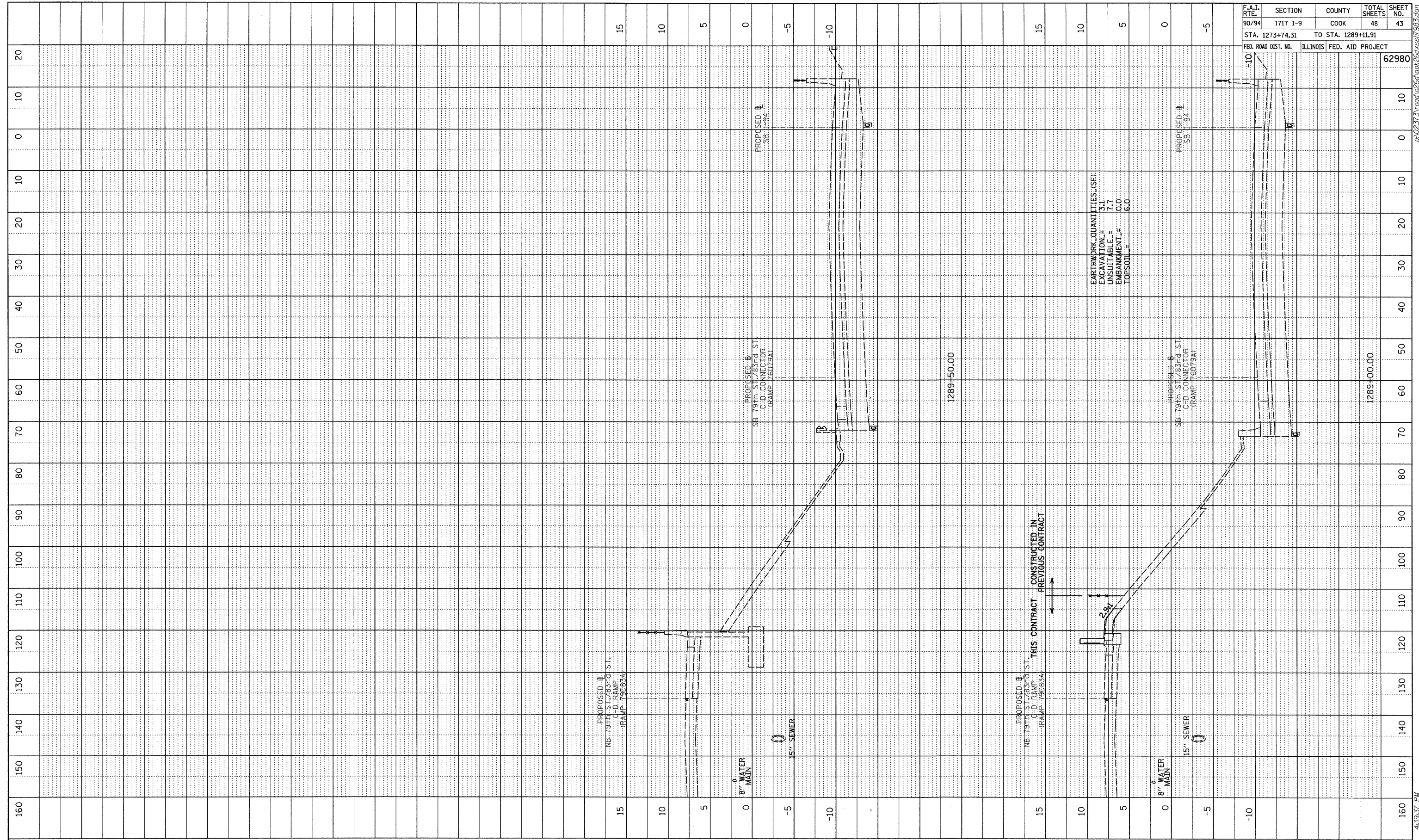
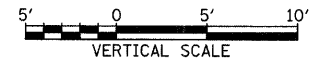


PROFILE	SURVEYED	BY	DATE
NOTE BOOK	ADJUSTED		
NO.	GRADE CHECKED		
	E.M. NOTED		
	STRUCTURE NOTATING OFFICER		



F.A.I. RTE.	SECTION	COUNTY	TOTAL SHEETS	SHEET NO.
90/94	1717 I-9	COOK	48	43
STA. 1273+74.31	TO STA. 1289+11.91			
FED. ROAD DIST. NO.	ILLINOIS FED. AID PROJECT		62980	

TYLIN INTERNATIONAL



SB I-94 (DAN RYAN EXPRESSWAY)  
STA. 1289+00 TO STA. 1289+50

10/16/2008 4:39:37 PM