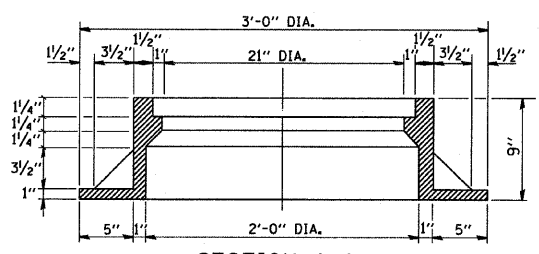


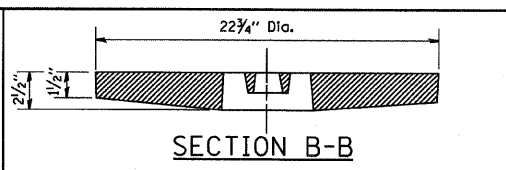
PLAN



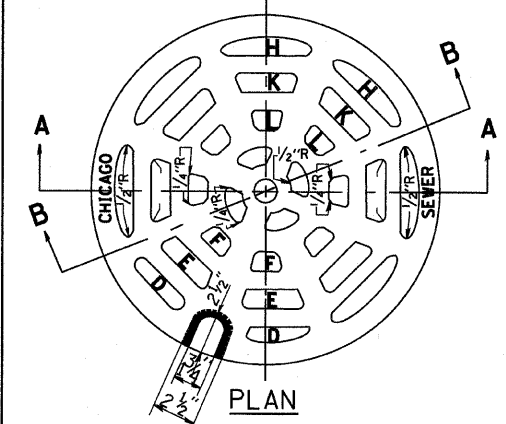
SECTION A-A

NOTE: METAL PLATES MUST BE FURNISHED FOR PERFORATED LIDS ON MANHOLES

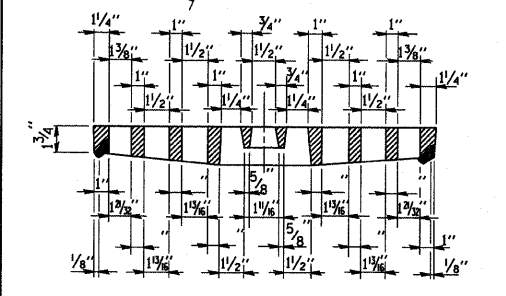
CHICAGO STANDARD MANHOLE FRAME
SCALE: 1/2"=1'-0"
MATERIAL: CAST IRON



SECTION B-B

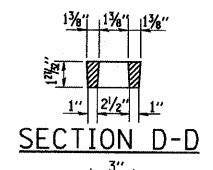


PLAN

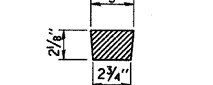


SECTION A-A

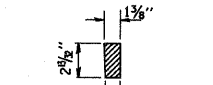
PERFORATED LID FOR CATCH BASINS & MANHOLES
SCALE: 2"=1'-0"
MATERIAL: CAST IRON



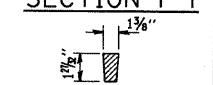
SECTION D-D



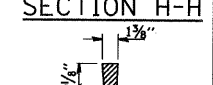
SECTION E-E



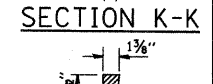
SECTION F-F



SECTION H-H

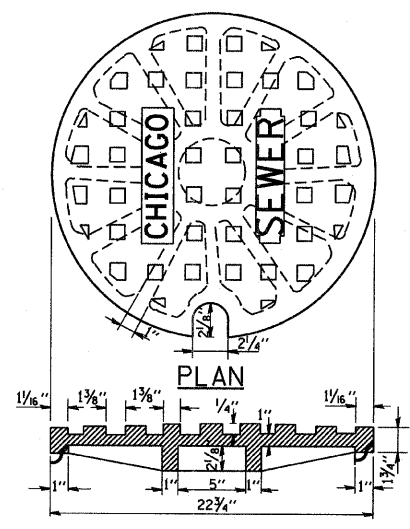


SECTION K-K



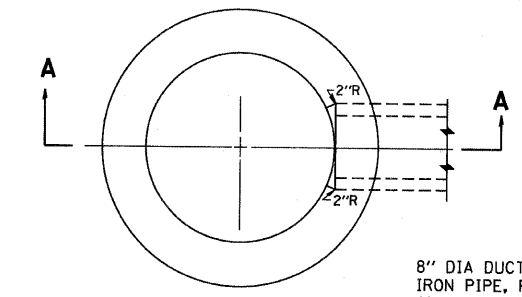
SECTION L-L

SOLID LID FOR MANHOLES
SCALE: NONE
MATERIAL: CAST IRON



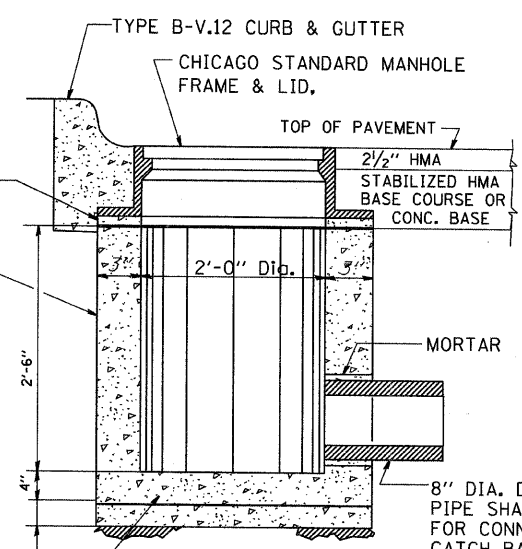
SECTION

SOLID LID FOR MANHOLES
SCALE: NONE
MATERIAL: CAST IRON



PLAN

(FRAME & LID NOT SHOWN)



SECTION A-A

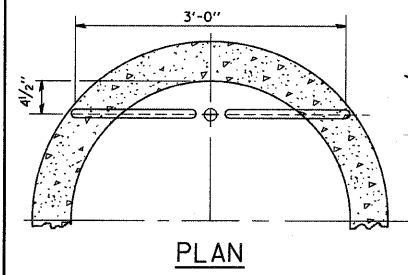
REINFC. CONC. BASE CAST AS INTEGRAL PART OF 24" DIA. PRECAST CONC. RING
6" MINIMUM GRANULAR EMBEDMENT UNDER ALL INLETS. FURNISHING AND INSTALLING GRANULAR EMBEDMENT SHALL BE INCLUDED IN THE UNIT PRICE BID FOR ITEM 12

STANDARD INLETS
SCALE: 1"=1'-0"
ITEM 12

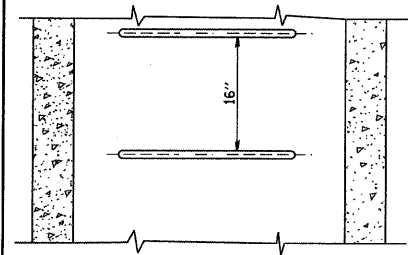
THIS INLET DETAIL IS SOMETIMES REFERRED TO AS "CHICAGO STANDARD INLET, TYPE A"

NOTE:
INLETS SHALL NOT BE CONSTRUCTED UNLESS IT IS IMPOSSIBLE TO CONSTRUCT A CATCH BASIN. THE CONTRACTOR SHALL HAVE THE DEPARTMENT OF SEWERS APPROVAL BEFORE CONSTRUCTING INLETS.

CITY OF CHICAGO
DEPARTMENT OF SEWERS
ENGINEERING DIVISION

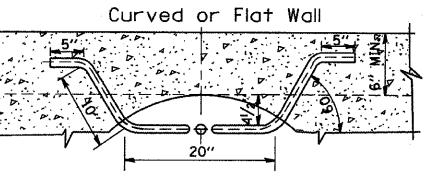


PLAN

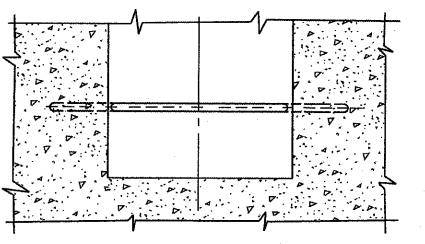


ELEVATION

TYPE X
SCALE: 1"=1'-0"

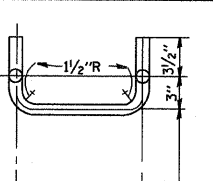


PLAN

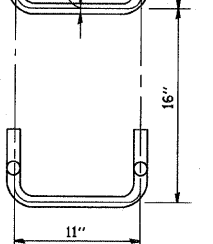


ELEVATION

TYPE Y
SCALE: 1"=1'-0"



PLAN



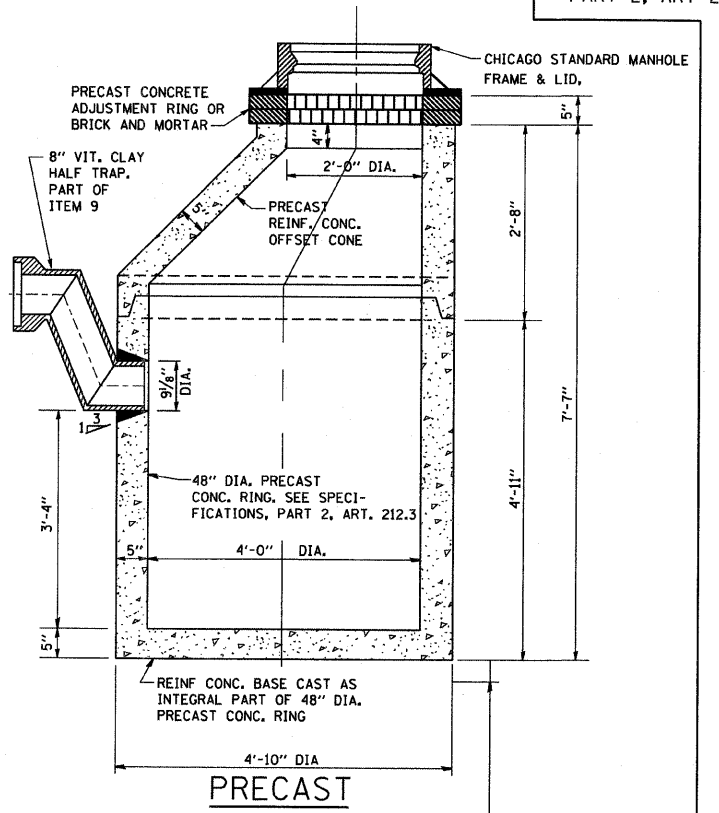
ELEVATION

SPACING
HANDHOLD-TYPE Z RUNG

SCALE: 1/2"=1'-0"

STANDARD LADDER RUNGS

ALL LADDER RUNGS SHALL BE ALUMINUM OR GALVANIZED WROUGHT IRON AS SPECIFIED IN THE SPECIFICATIONS, PART 2, ARTICLE 214.2. RUNGS SHALL BE 1" DIAMETER OR OF A SHAPE HAVING AN EQUIVALENT CROSS-SECTIONAL AREA.



PRECAST

NOTE:
6" MINIMUM GRANULAR EMBEDMENT UNDER ALL CATCH BASINS

STANDARD CATCH BASINS
SCALE: 3/4"=1'-0"
ITEM 9

FILE NAME =	USER NAME = geglantobt	DESIGNED - M. GOMEZ	REVISED -
W:\d\ststd\22x34\bd47.dgn		DRAWN -	REVISED -
	PLOT SCALE = 50.0000 / IN.	CHECKED -	REVISED -
	PLOT DATE = 1/4/2008	DATE - 01-25-01	REVISED -

STATE OF ILLINOIS
DEPARTMENT OF TRANSPORTATION

CITY OF CHICAGO
CATCH BASIN, INLET AND MANHOLE DETAILS

F.A. RTE.	SECTION	COUNTY	TOTAL SHEETS	SHEET NO.
94	1717	COOK	48	44
BD600-13 (BD47)			CONTRACT NO. 4298D	
FED. ROAD DIST. NO. 1 ILLINOIS FED. AID PROJECT				

SCALE: NONE SHEET NO. 1 OF 1 SHEETS STA. TO STA.