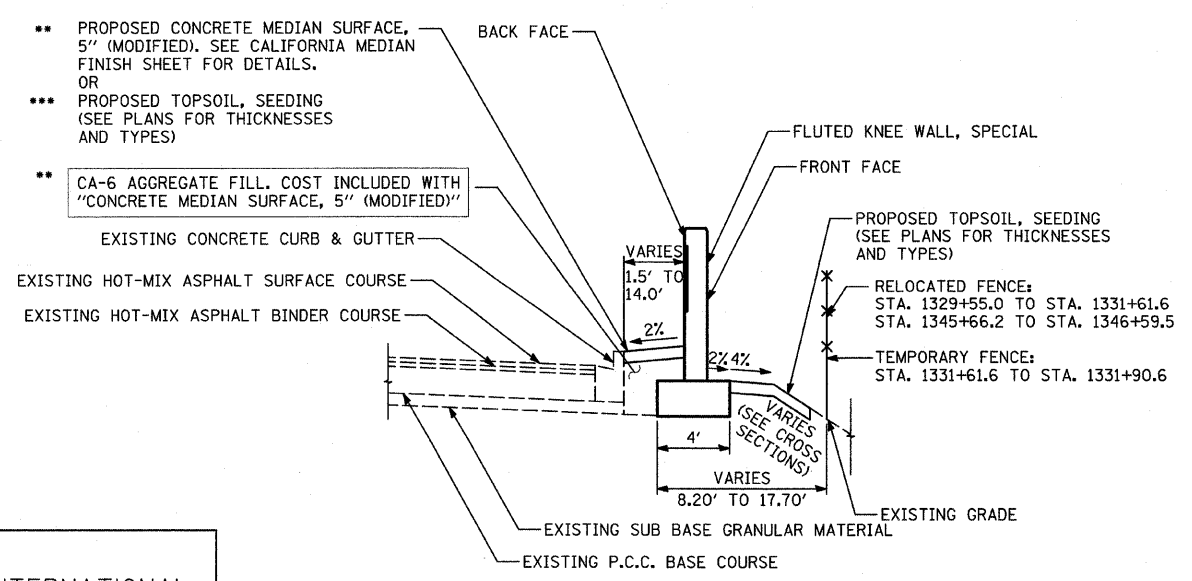


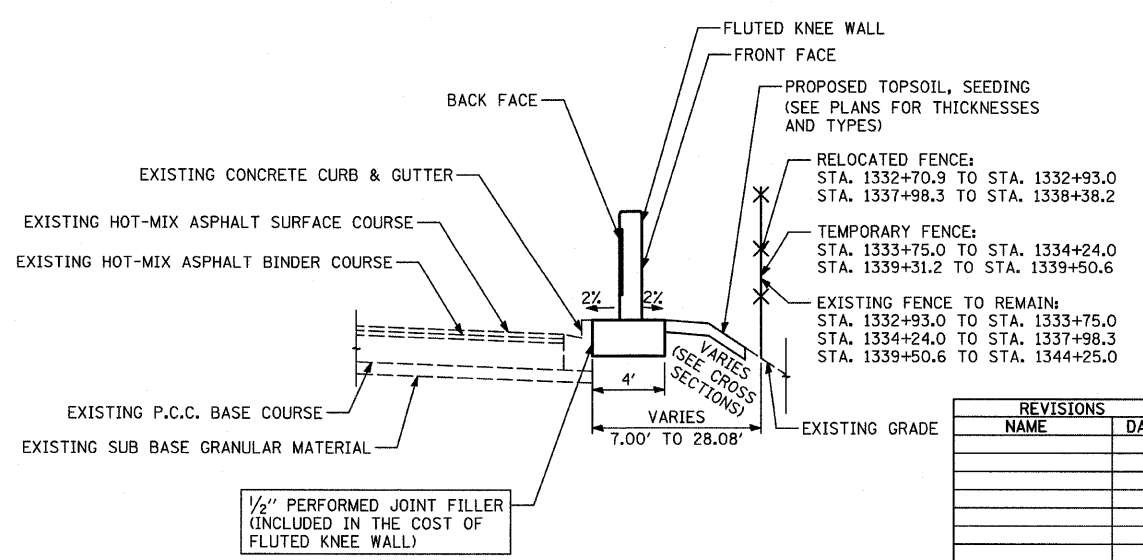
PROPOSED SB LAFAYETTE AVE.
 STA. 1329+55.0 TO STA. 1331+78.2
 STA. 1345+66.2 TO STA. 1346+59.5

PROPOSED SB LAFAYETTE AVE.
 STA. 1332+81.5 TO STA. 1338+28.1
 STA. 1339+41.2 TO STA. 1345+66.2

- STA. 1329+55.0 TO STA. 1331+78.2
 STA. 1345+66.2 TO STA. 1345+76.2
- STA. 1345+76.2 TO STA. 1346+59.5



KNEE WALL DETAIL 1



KNEE WALL DETAIL 2

REVISIONS	
NAME	DATE

ILLINOIS DEPARTMENT OF TRANSPORTATION
 F.A.I. 94 (DAN RYAN EXPRESSWAY)
**EXISTING AND PROPOSED TYPICAL SECTIONS
 SB LAFAYETTE AVE.**

SCALE: NONE
 DATE: OCTOBER 17, 2008

DRAWN BY: TB
 CHECKED BY: TGB, MI