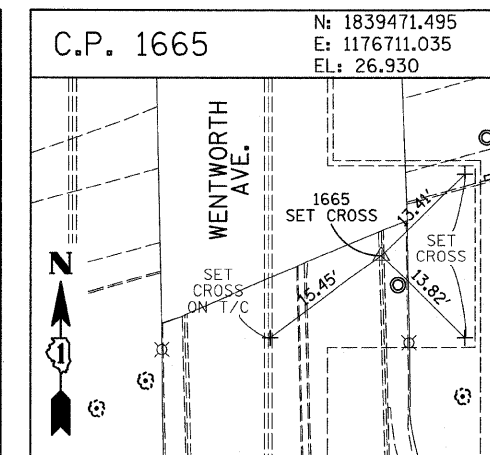
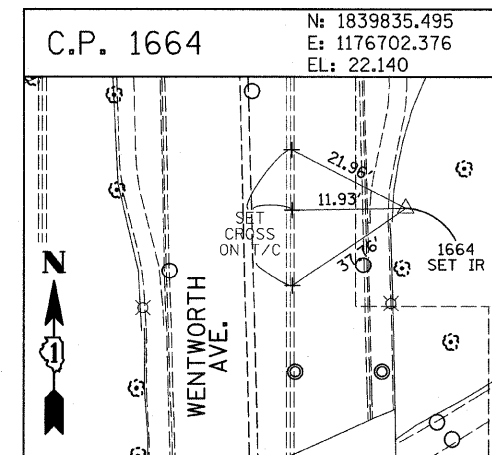
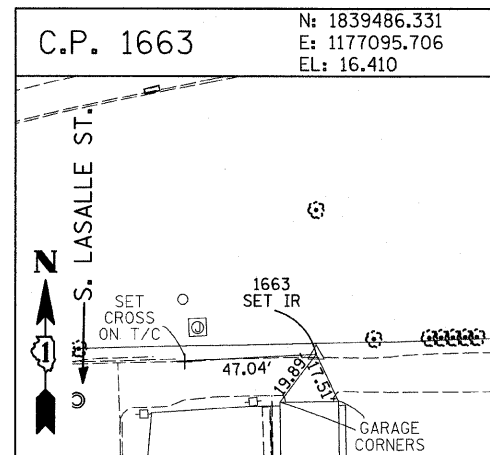
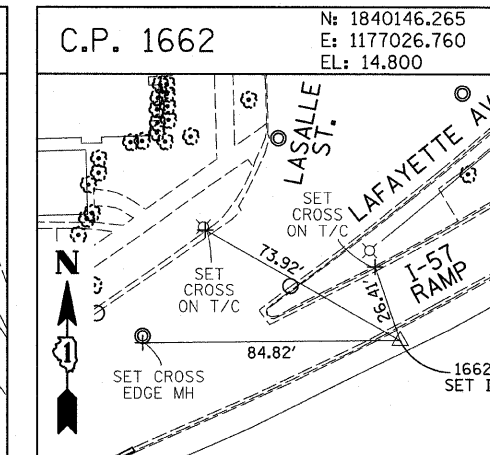
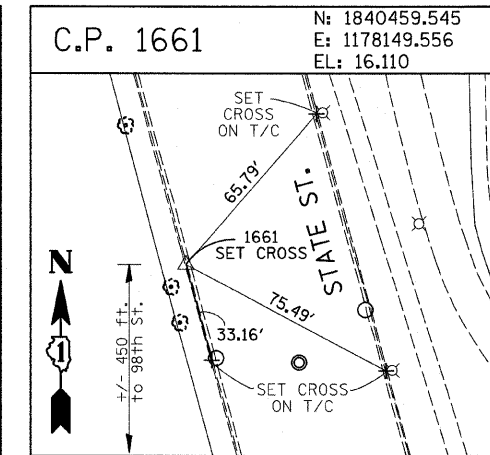
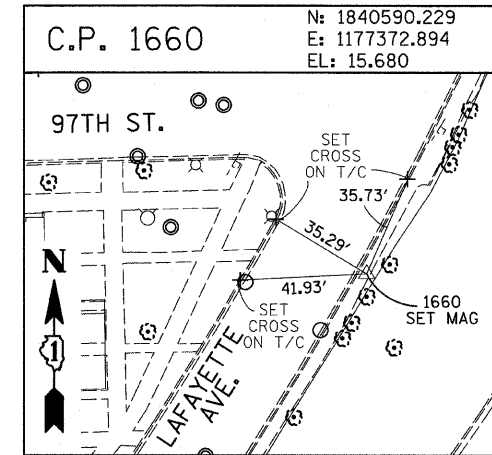
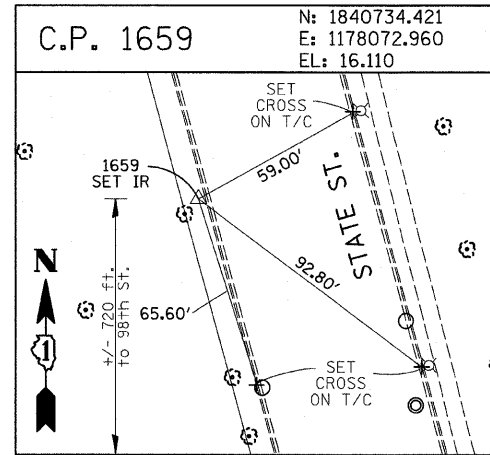
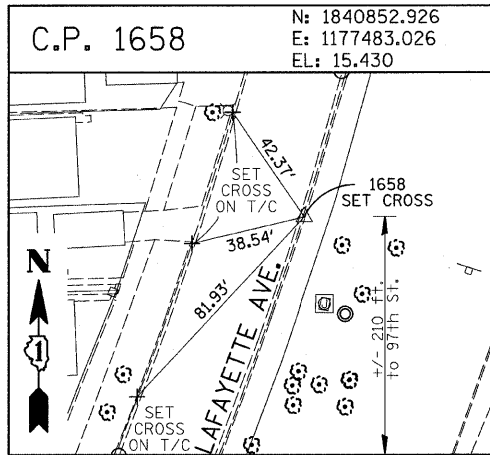
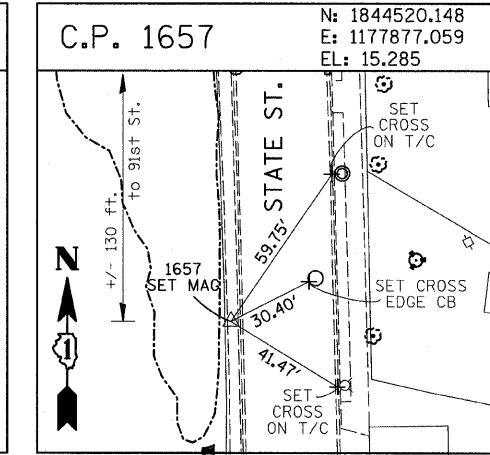
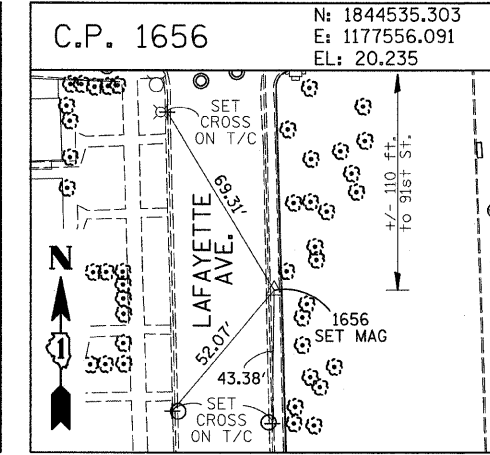
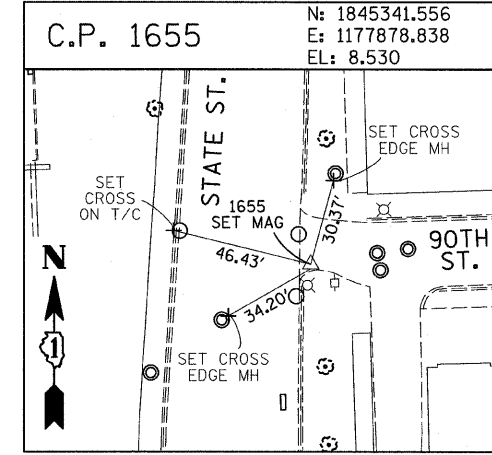
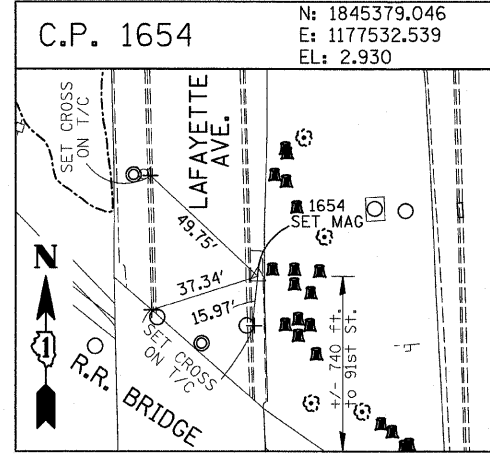
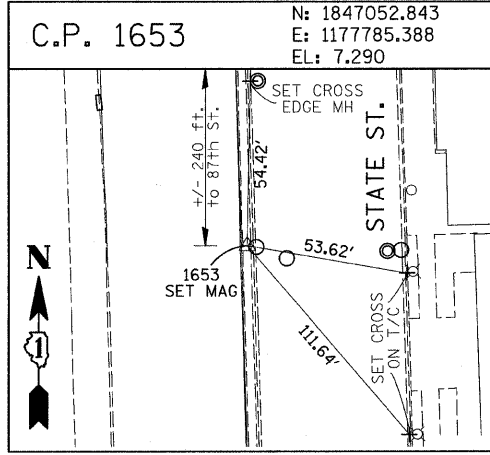
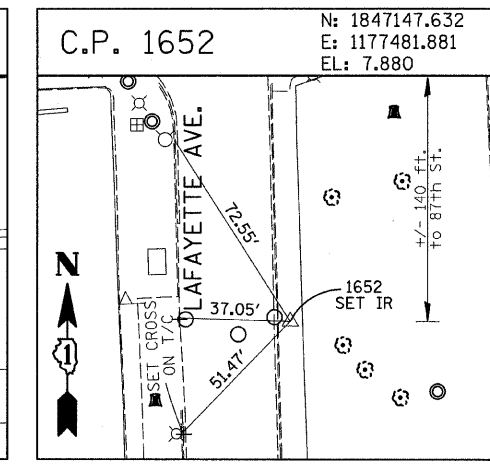
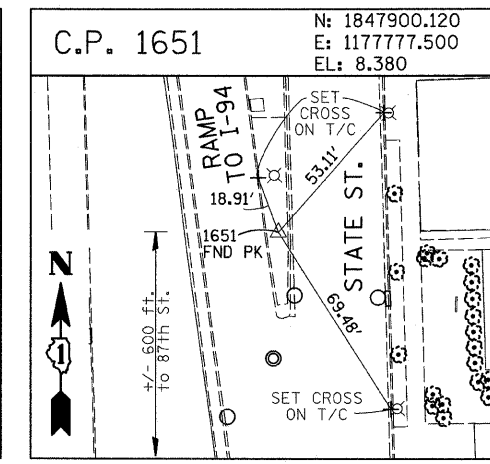
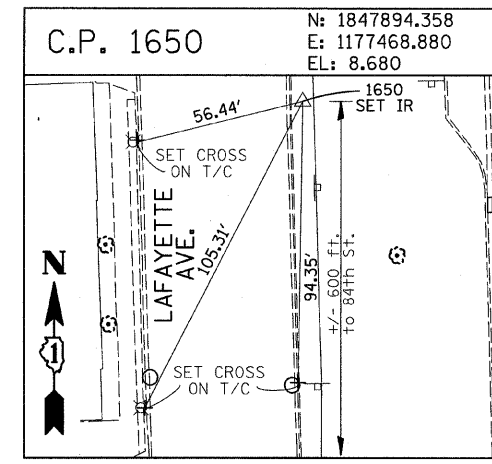
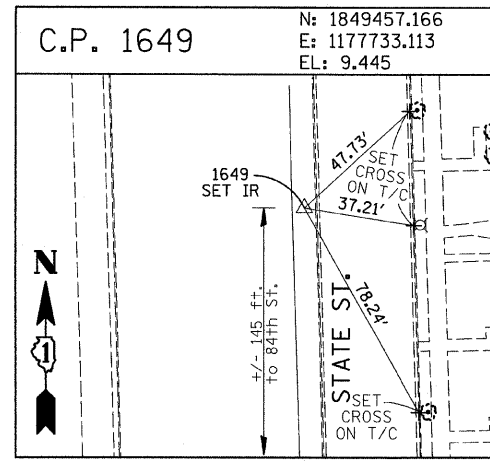
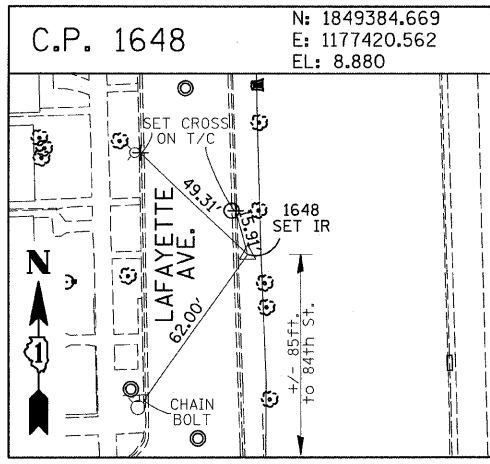


F.A.I. RTE.	SECTION	COUNTY	TOTAL SHEETS	SHEET NO.
94	1818 I-9	COOK	49	13
STA. 1329+49.25		TO STA. 1347+21.51		
FED. ROAD DIST. NO.		ILLINOIS		FED. AID PROJECT
62981				



American Surveying Consultants, P.C.
 1577 First St., Chicago, IL 60611 606 N. Northwest Highway, Chicago, IL 60611

REVISIONS	
NAME	DATE

ILLINOIS DEPARTMENT OF TRANSPORTATION
 F.A.I. 94 (DAN RYAN EXPRESSWAY)
 SURVEY TIES FOR CONTROL POINTS
 SHEET 4 OF 7
 SCALE: 1"=30'
 DATE: OCTOBER 17, 2008
 DRAWN BY: GSP
 CHECKED BY: MMW

10/16/2008 4:53:27 PM