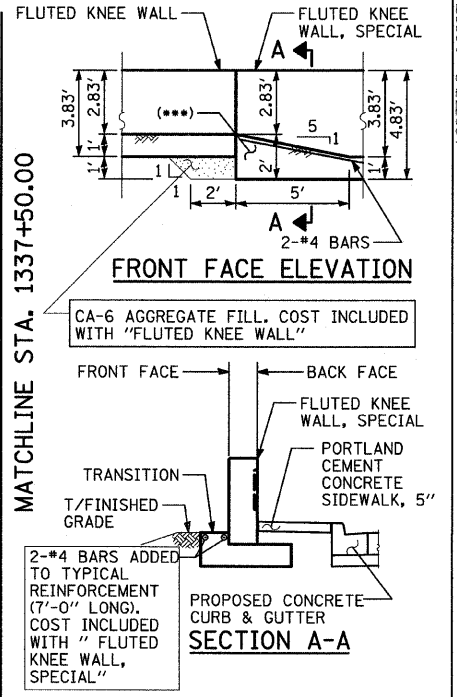
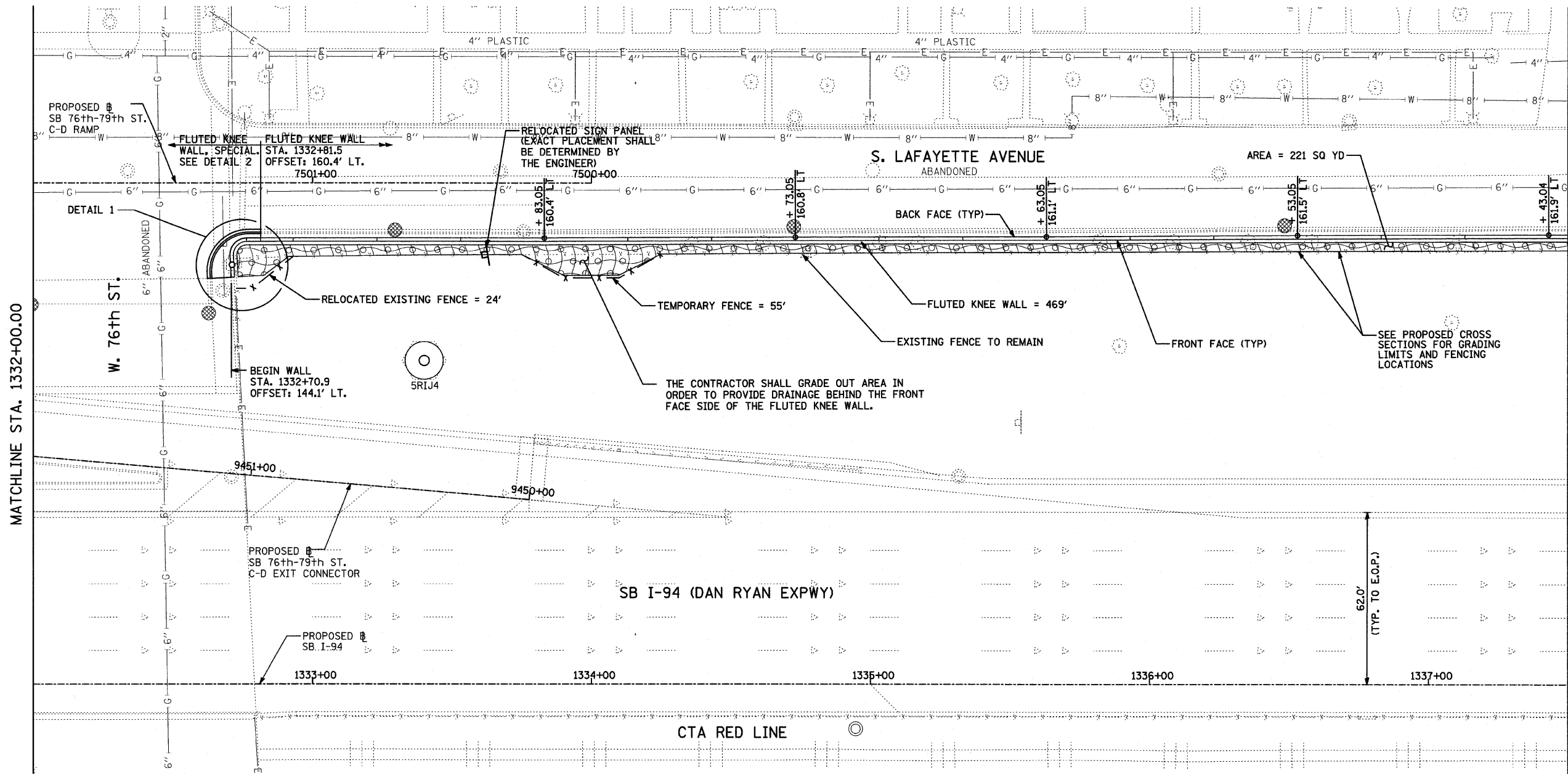
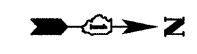


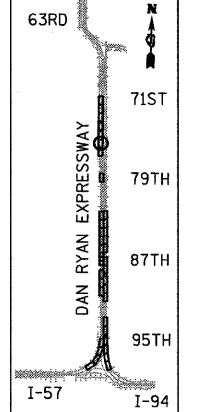
F.A.I. RTE.	SECTION	COUNTY	TOTAL SHEETS	SHEET NO.
94	1818 I-9	COOK	49	20
STA. 1329+49.25		TO STA. 1347+21.51		
FED. ROAD DIST. NO.	ILLINOIS	FED. AID PROJECT		

62981

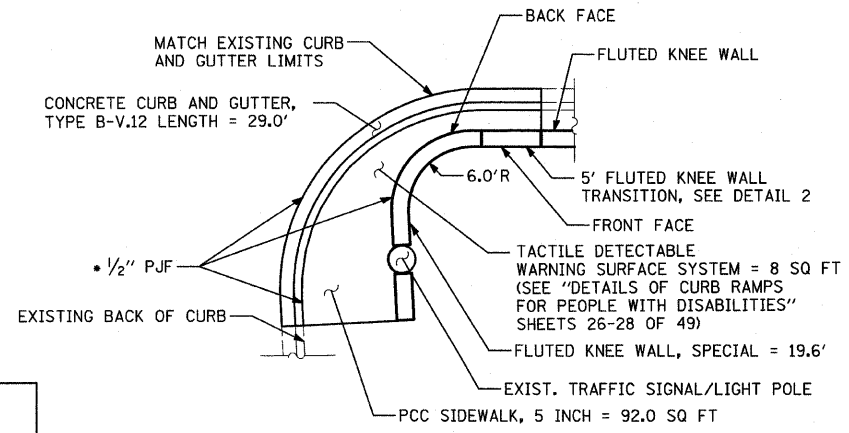
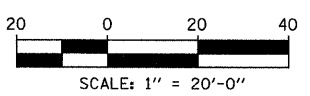
*** ADDITIONAL CONCRETE AT FOOTING TRANSITION, COST INCLUDED WITH "FLUTED KNEE WALL, SPECIAL"



FOOTING TRANSITION-DETAIL 2
(FROM FLUTED KNEE WALL, SPECIAL TO FLUTED KNEE WALL)



LOCATION MAP



DETAIL 1

COST INCLUDED WITH "PCC SIDEWALK, 5 INCH"

LEGEND:

- EROSION CONTROL BLANKET, SEEDING, CLASS 2A, NITROGEN, PHOSPHORUS, AND POTASSIUM FERTILIZER NUTRIENTS, TOPSOIL FURNISH AND PLACE, 4"
- EROSION CONTROL BLANKET, SEEDING, CLASS 2A, NITROGEN, PHOSPHORUS, AND POTASSIUM FERTILIZER NUTRIENTS, TOPSOIL FURNISH AND PLACE, 12" COMPOST FURNISH AND PLACE, 6"
- INLET FILTER

NOTES:

1. STATION AND OFFSET CALLOUTS ALONG THE LENGTH OF EITHER FLUTED KNEE WALL OR FLUTED KNEE WALL, SPECIAL ARE TAKEN FROM THE BACK FACE SIDE AT PROPOSED EXPANSION JOINT LOCATIONS.
2. THE CONTRACTOR SHALL PROTECT AND USE CAUTION DURING CONSTRUCTION OPERATIONS AROUND ALL EXISTING PUBLIC OR PRIVATE UTILITY FACILITIES.

REVISIONS	
NAME	DATE

ILLINOIS DEPARTMENT OF TRANSPORTATION
F.A.I. 94 (DAN RYAN EXPRESSWAY)
PROPOSED PLAN
SB I-94 (DAN RYAN EXPRESSWAY)
STA. 1332+00.00 TO STA. 1337+50.00
SCALE: 1"=20'
DATE: OCTOBER 17, 2008
DRAWN BY: AMB, MAF, TB
CHECKED BY: TGB, MI

TYLIN INTERNATIONAL

10/17/2008 8:53:24 AM P:\02373\Road\208\208\PP\266\62981.dgn