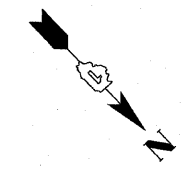
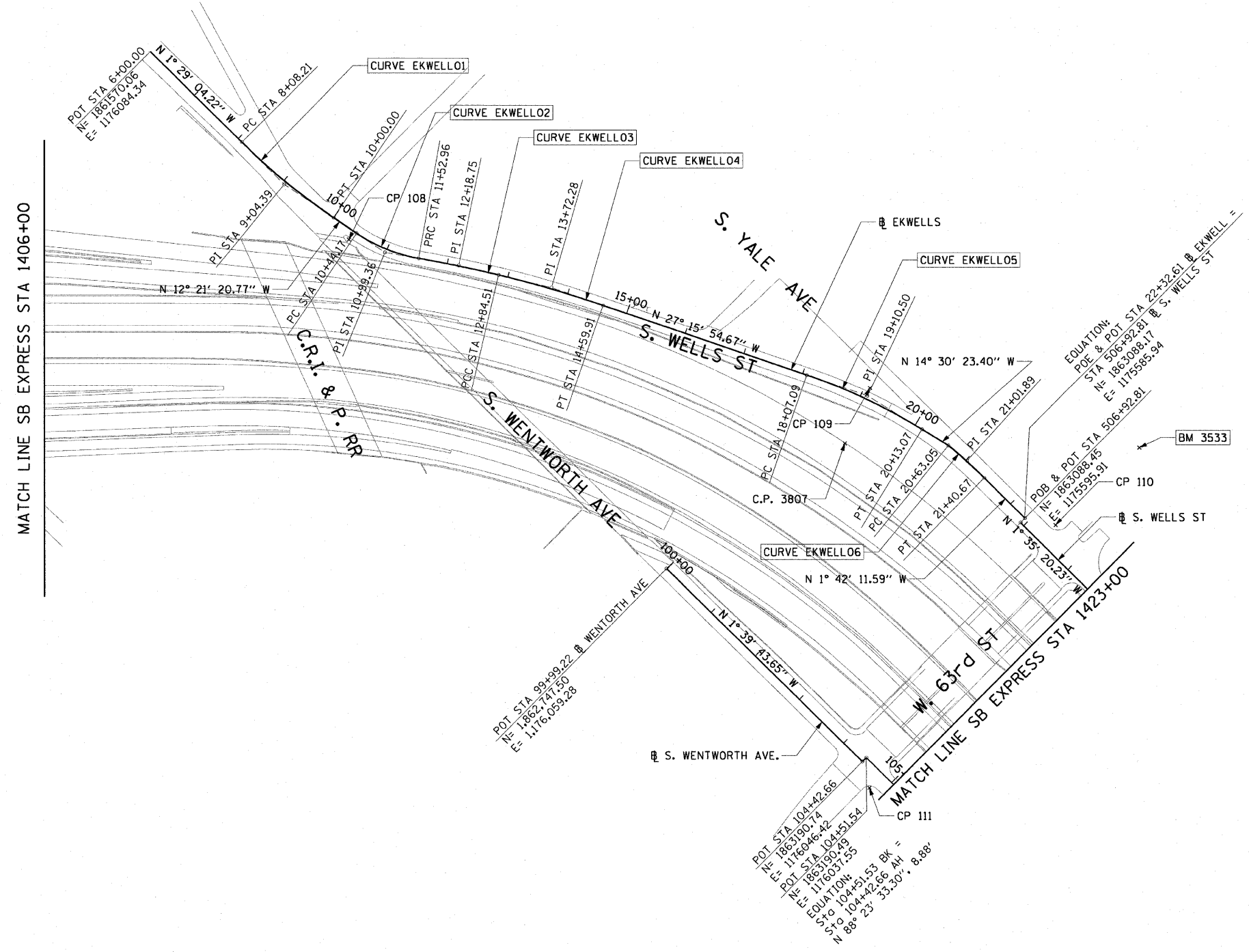


F.A.I. RTE.	SECTION	COUNTY	TOTAL SHEETS	SHEET NO.
90/94	*	COOK	45	7
STA.		TO STA.		
FED. ROAD DIST. NO. 1		ILLINOIS	FED. AID PROJECT	
*1818, 1919, 1919.15		I-11		62983



<p><b>CURVE EKWELLO1</b>  P.I. STA= 9+04.39  N= 1,861,874.35  E= 1,176,076.45  Δ= 10° 52' 16"  D= 5° 40' 05"  R= 1,010.83'  T= 96.18'  L= 191.79'  E= 4.56'  e= N/A  T.R.= N/A  S.E. RUN= N/A  P.C. STA= 8+08.21  N= 1,861,778.19  E= 1,176,078.94  P.T. STA= 10+00.00  N= 1,861,968.30  E= 1,176,055.87</p>	<p><b>CURVE EKWELLO2</b>  P.I. STA= 10+99.36  N= 1,862,065.35  E= 1,176,034.61  Δ= 23° 41' 58"  D= 21° 47' 07"  R= 263.00'  T= 55.18'  L= 108.78'  E= 4.56'  e= N/A  T.R.= N/A  S.E. RUN= N/A  P.C. STA= 10+44.17  N= 1,862,011.45  E= 1,176,002.13  P.T. STA= 11+52.96  N= 1,862,109.97  E= 1,176,002.13</p>
<p><b>CURVE EKWELLO3</b>  P.I. STA= 12+18.75  N= 1,862,163.15  E= 1,175,963.41  Δ= 2° 58' 46"  D= 2° 15' 54"  R= 2,529.60'  T= 65.78'  L= 131.54'  E= 0.85'  e= N/A  T.R.= N/A  S.E. RUN= N/A  P.C. STA= 11+52.96  N= 1,862,109.97  E= 1,176,002.13  P.T. STA= 12+84.51  N= 1,862,218.28  E= 1,175,927.50</p>	<p><b>CURVE EKWELLO4</b>  P.I. STA= 13+72.28  N= 1,862,291.83  E= 1,175,879.60  Δ= 5° 48' 38"  D= 3° 18' 45"  R= 1,729.58'  T= 87.77'  L= 175.40'  E= 2.22'  e= N/A  T.R.= N/A  S.E. RUN= N/A  P.C. STA= 12+84.51  N= 1,862,218.28  E= 1,175,927.50  P.T. STA= 14+59.61  N= 1,862,369.86  E= 1,175,839.39</p>
<p><b>CURVE EKWELLO5</b>  P.I. STA= 19+10.50  N= 1,862,770.39  E= 1,175,632.97  Δ= 12° 45' 31"  D= 6° 11' 38"  R= 925.00'  T= 103.41'  L= 205.97'  E= 5.76'  e= N/A  T.R.= N/A  S.E. RUN= N/A  P.C. STA= 18+07.09  N= 1,862,678.46  E= 1,175,680.34  P.T. STA= 20+13.07  N= 1,862,870.51  E= 1,175,607.06</p>	<p><b>CURVE EKWELLO6</b>  P.I. STA= 21+01.89  N= 1,862,957.45  E= 1,175,589.82  Δ= 5° 16' 59"  D= 6° 48' 23"  R= 841.78'  T= 38.83'  L= 77.62'  E= 0.89'  e= N/A  T.R.= N/A  S.E. RUN= N/A  P.C. STA= 20+63.05  N= 1,862,918.90  E= 1,175,594.54  P.T. STA= 21+40.67  N= 1,862,996.27  E= 1,175,588.66</p>



- NOTES:**
- AVERAGE GRID TO GROUND CONVERSION FACTOR = 1.000010988654360
  - FOR BENCH MARK INFORMATION, SEE SHEET 1 OF ALIGNMENT PLAN SHEETS.

REVISIONS	
NAME	DATE

ILLINOIS DEPARTMENT OF TRANSPORTATION  
F.A.I. 90/94 (DAN RYAN EXPRESSWAY)  
71ST ST TO 63RD ST (NORTHBOUND KNEE WALLS)

**ALIGNMENT PLAN**

SCALE: 1"=100'  
DATE: JANUARY 14, 2009

DRAWN BY: NJH  
CHECKED BY: RMG



1/13/2009 11:09:29 AM \\usctplf\p207\p0468\c\40468\ch\1128-knee-wall\1\_Fercest\1\contract\27\and\27\003\003.dwg