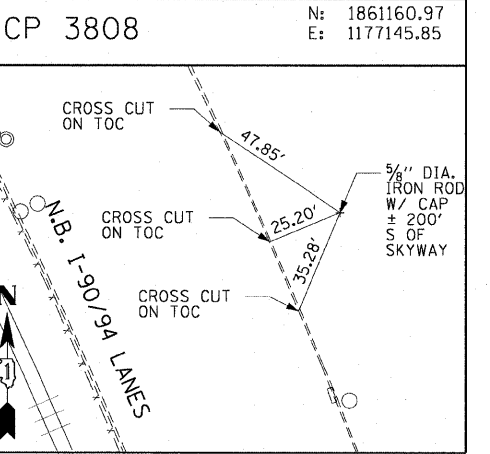
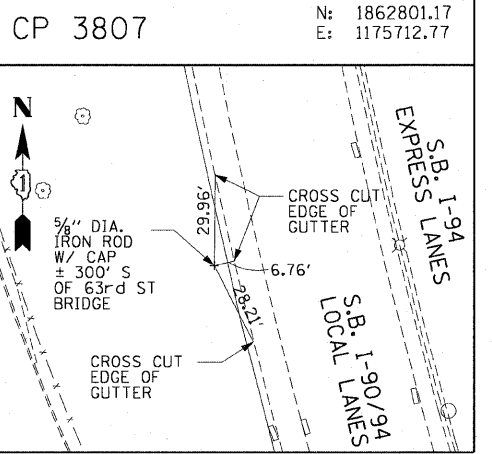
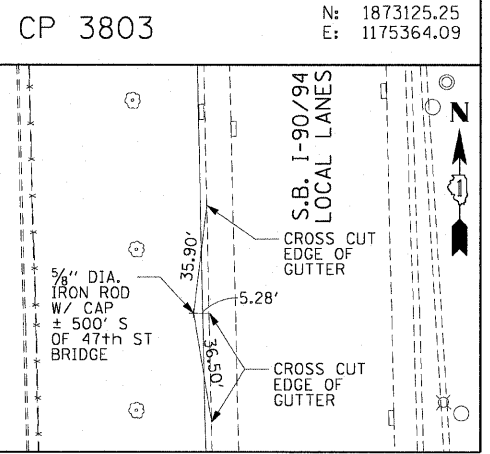
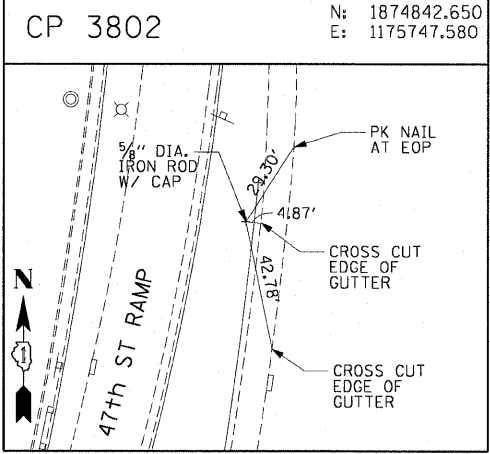
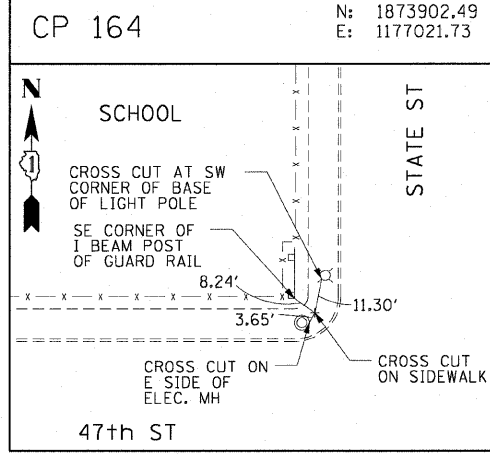
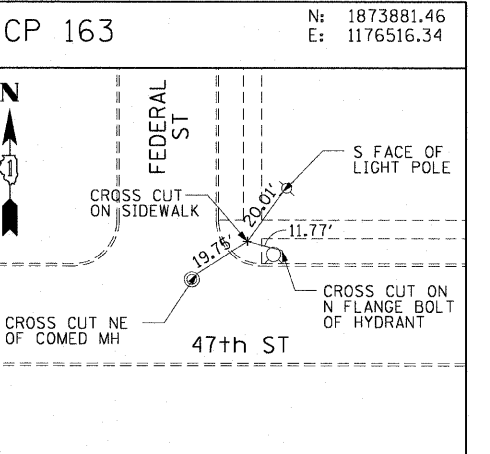
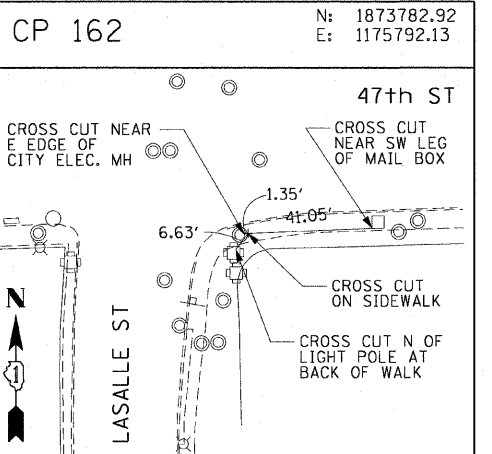
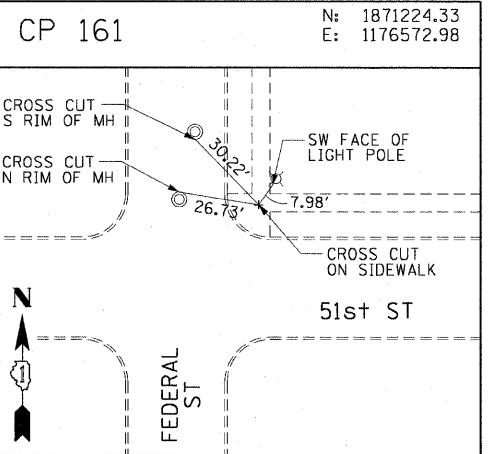
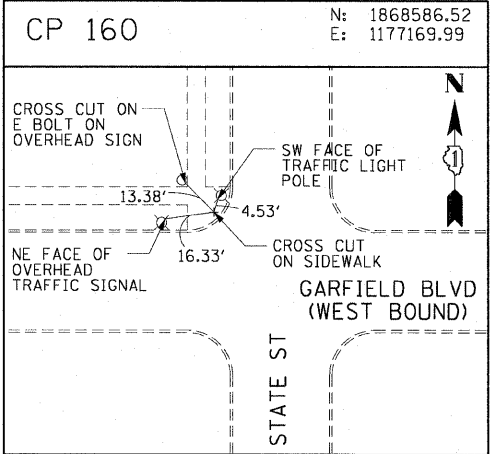
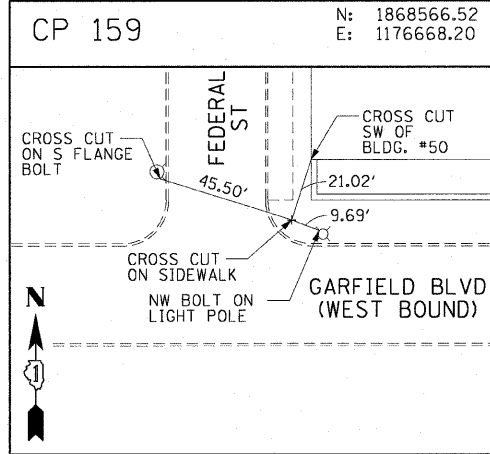
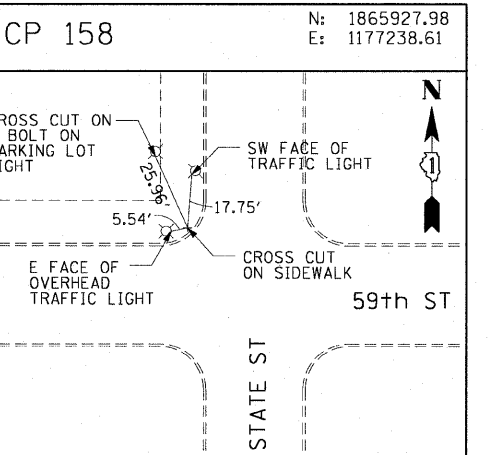
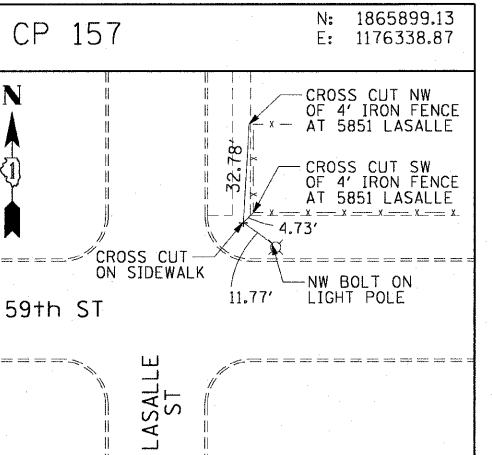
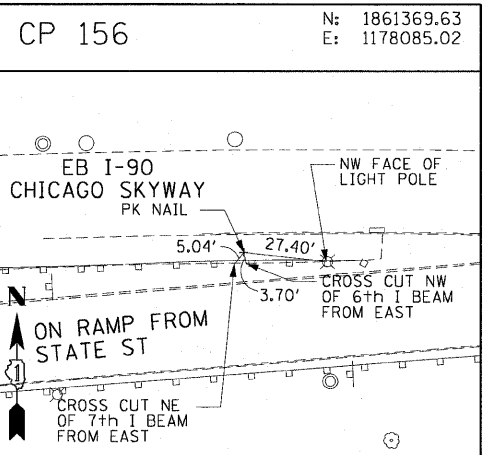
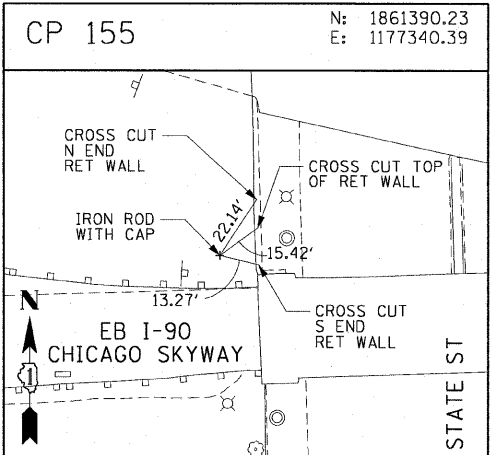
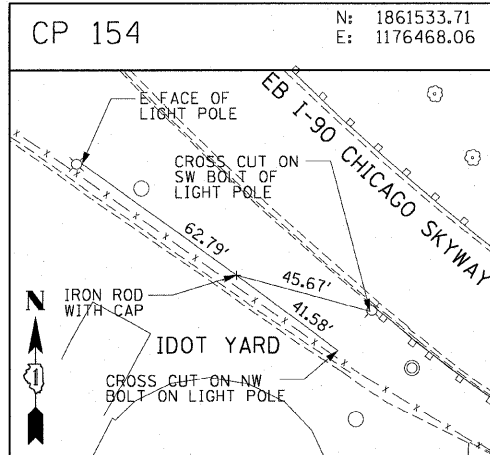


F.A.I. RTE. 90/94	SECTION	COUNTY	TOTAL SHEETS	SHEET NO.
		COOK	45	15
STA.		TO STA.		
FED. ROAD DIST. NO. 1		ILLINOIS	FED. AID PROJECT	
•(1818, 1919, 1919.15) I-11		62983		



AECOM

REVISIONS	
NAME	DATE

ILLINOIS DEPARTMENT OF TRANSPORTATION
 F.A.I. 90/94 (DAN RYAN EXPRESSWAY)
 71ST ST TO 63RD ST (NORTHBOUND KNEE WALLS)
 SURVEY TIES AND CONTROL POINTS

SCALE: 1"=30'
 DATE: JANUARY 14, 2009

DRAWN BY: MRK
 CHECKED BY: JAL

1/15/2009 11:59:32 AM \\usctgtr\p207\p40468\p40468\civ\128-knee_wall_fences\st\contract\210\021\0102\st